

REACH Armenia: MSNA Donor Briefing

11 December 2020



UNHCR
The UN Refugee Agency



h—h
H2H Network
Humanitarian
Action Support

REACH Informing more effective humanitarian action

Key Findings

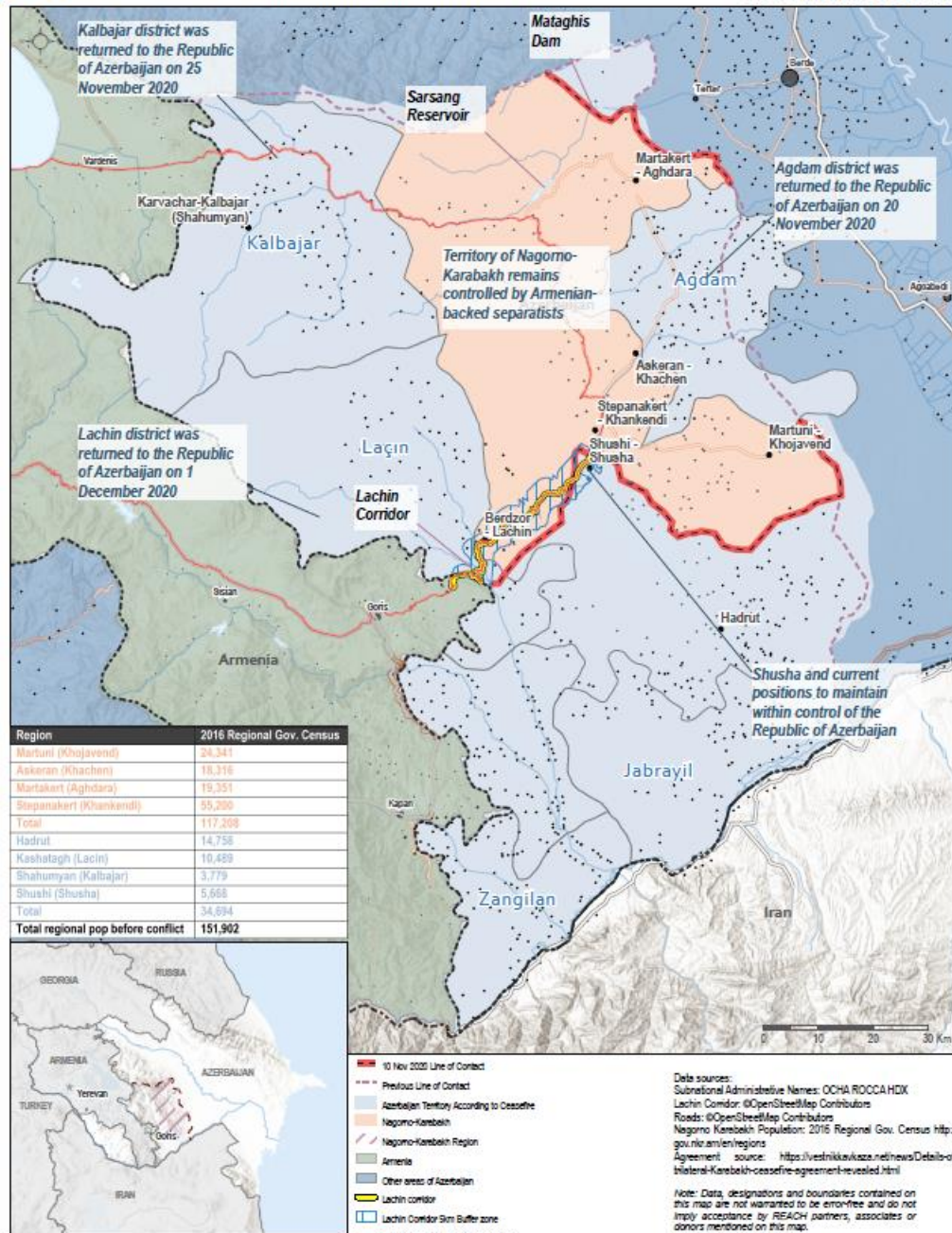
- While **fighting has stopped the displacement situation is still very dynamic**
- More than **50% of displaced household** reported that they **do not intend to return** and **20%** were **unable to plan** what they would do in the next three months
- According the latest spontaneous arrivals data there are more than **89,000 individuals** registered as **spontaneous arrivals** in **Armenia**. Their reported priority needs are shelter/housing (including NFIs), cash, clothes and medicines.
- Based on analysis of household compositions there are probably between **70,000 to 80,000** people living with spontaneous arrivals that need support as host families. Their reported priority needs are cash, shelter/housing (including NFIs), food and clothes

Methodology

- **Household survey** (750 records collected from 01 December and 11 December 2020) – purposively sampled using **snowball sampling** approaches
- Weighted for **three population groups** and **7 Marz**
- Overall target more than **1,300 HH surveys** in **7 regions** (Yerevan, Ararat, Armavir, Kotayk, Vayot Dzor, Syunik and Gegargunik representing close to 90% of all spontaneous arrivals)
- Target population groups: **displaced hosted, displaced in sites, hosting families**
- **2 Phase: 1st phase** focusing on displaced hosted and hosting families in Yerevan, Ararat, Armavir, Kotayk; **2nd phase** focusing on displaced hosted and hosting families in Syunik, Gegargunik and Vayot Dzor and displaced in sites

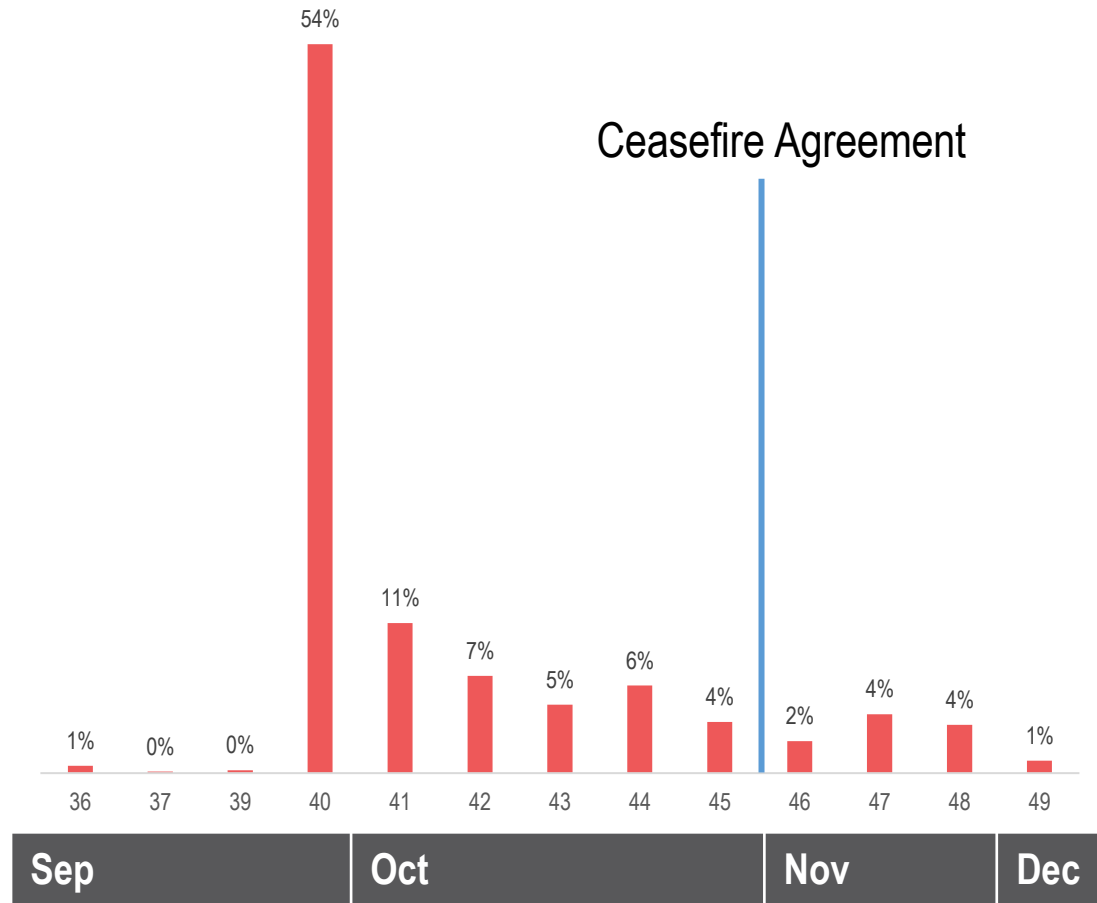
Ceasefire Map

REACH



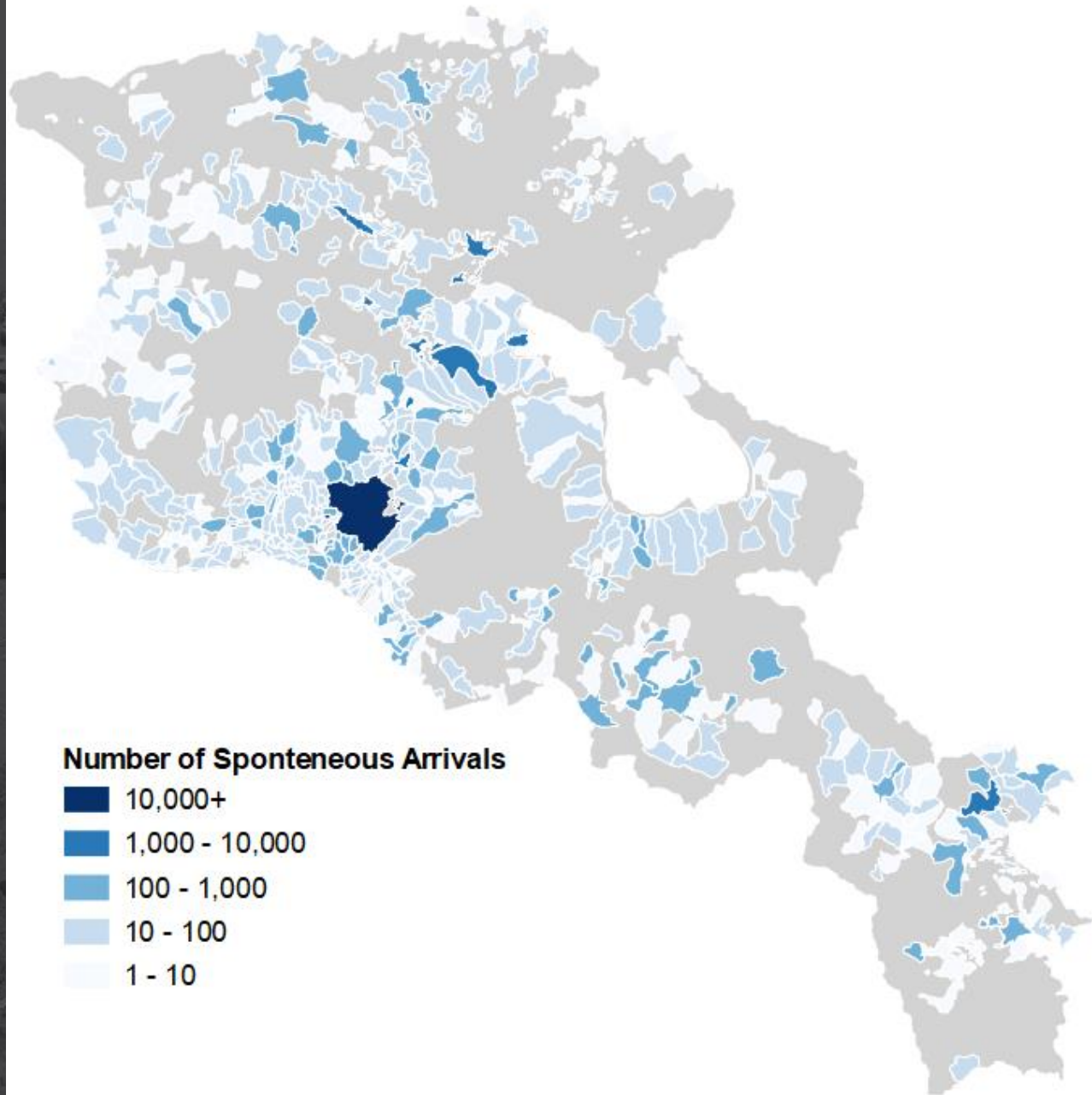
Displacement Timeline

Displacement Timeline, % of Displaced Households



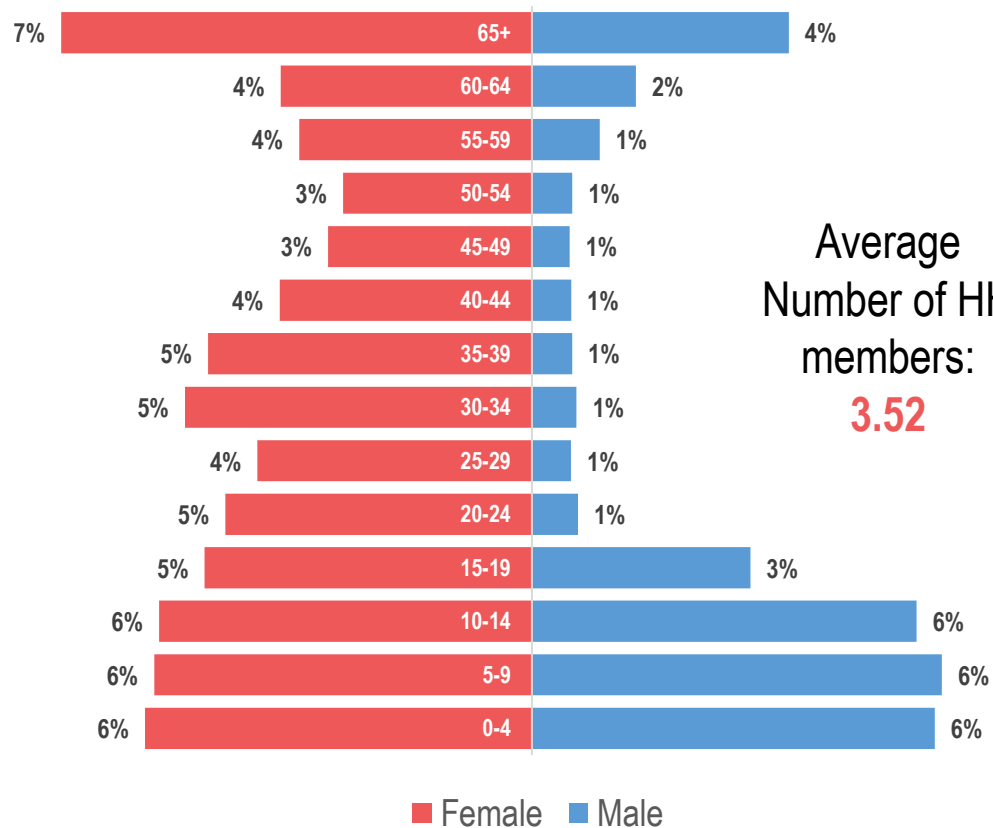
Most SAs moved in **end of September**, **11%** after the **ceasefire agreement**

Displaced Distribution



Population Pyramid

Age Pyramid (Reported to Migration Services as of December 2020/UNHCR)

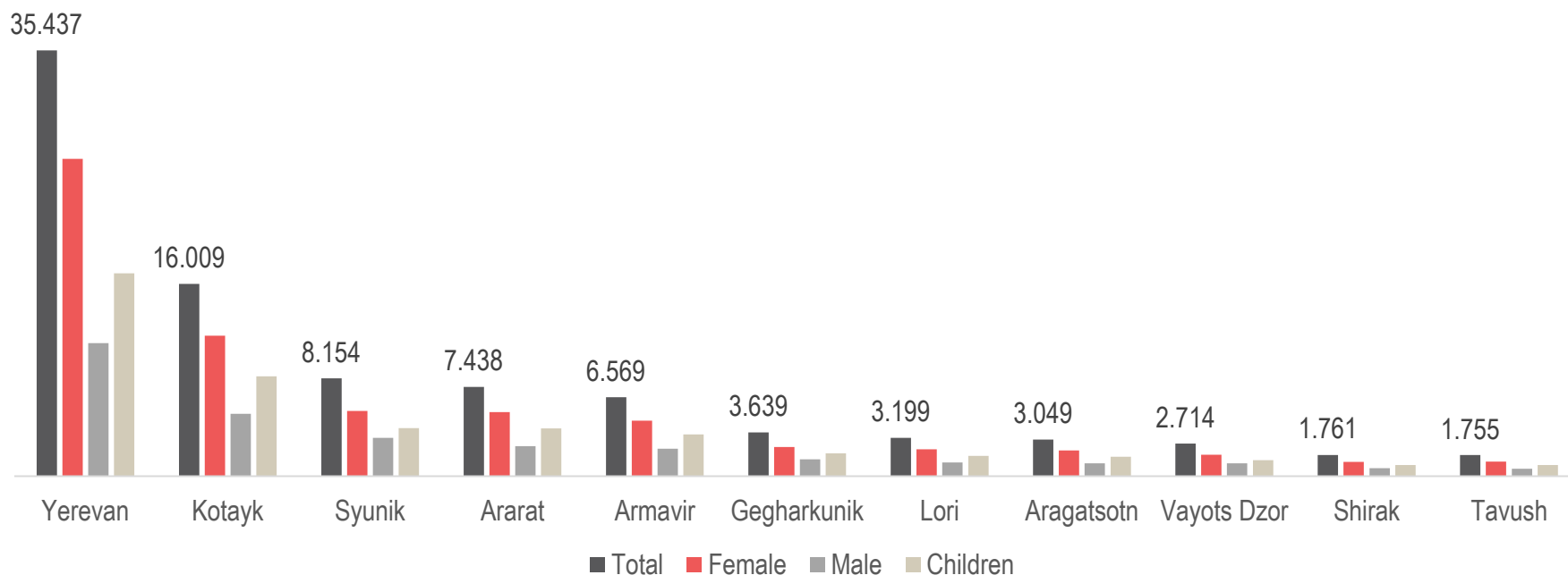


Average
Number of HH
members:
3.52

More than **80%** of registered spontaneous arrivals are **female and children**

Displaced Distribution

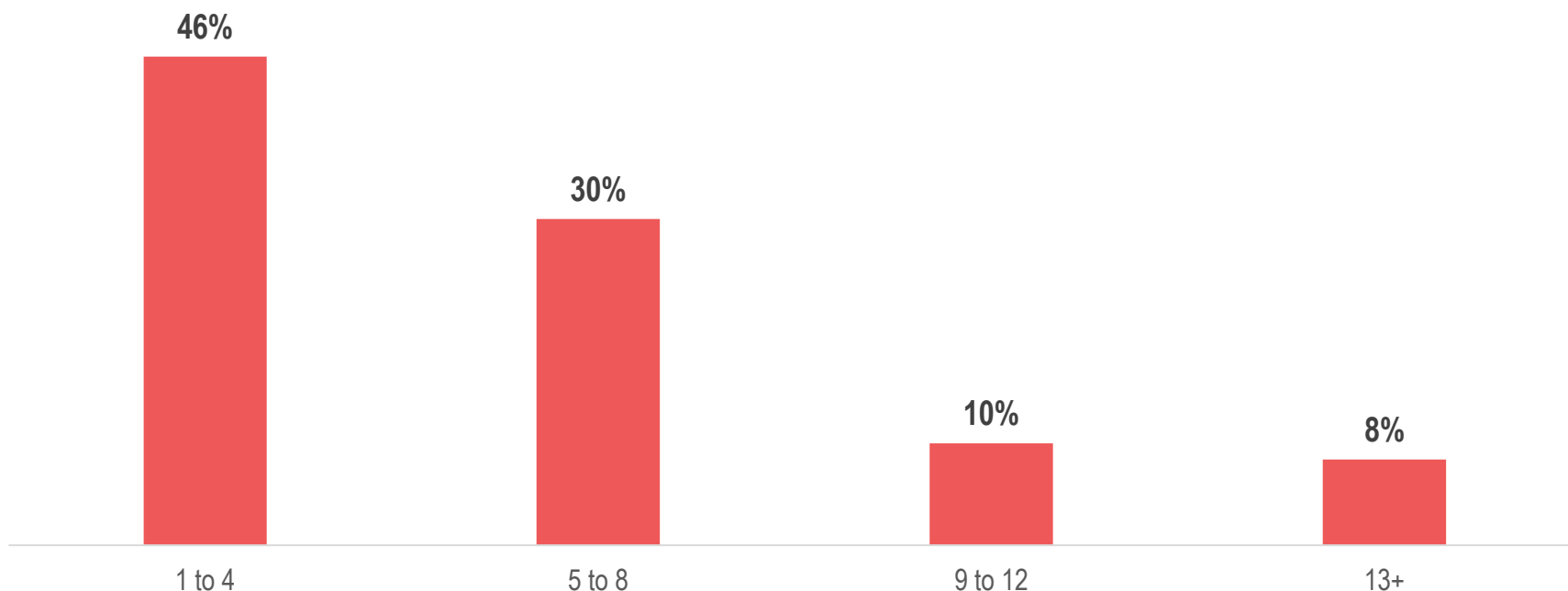
of Registered Spontaneous Arrivals by Marz, Gender and Age (reported by Migration Service/UNHCR)



More than 80% of arrivals are located in 5 Marz (**Yerevan, Kotayk, Syunik, Ararat, Armavir**)

Hosting Arrangements

% of Host Families by number of displaced persons they are hosting



75% of host families are hosting between **1 and 2 families**

Priority Needs

Assistance	Displaced		
	1st	2nd	3rd
Baby items	0%	1%	0%
Cash	24%	34%	30%
Clothes	4%	16%	22%
Communication (phone or internet access)	0%	0%	0%
Cooking materials	0%	1%	2%
Don't know/Refuse to answer	1%	1%	3%
Food	9%	18%	15%
Medicines	3%	5%	6%
No needs	2%	3%	4%
Sanitation and Hygiene Products	2%	2%	3%
Shelter	50%	10%	6%
Sleeping materials	4%	4%	7%
Support for livelihoods and employment	0%	1%	0%
Support with child care/education	0%	0%	1%
Support with registration/legal assistance	0%	1%	1%
Support with Transport	0%	0%	0%
Water	0%	2%	0%

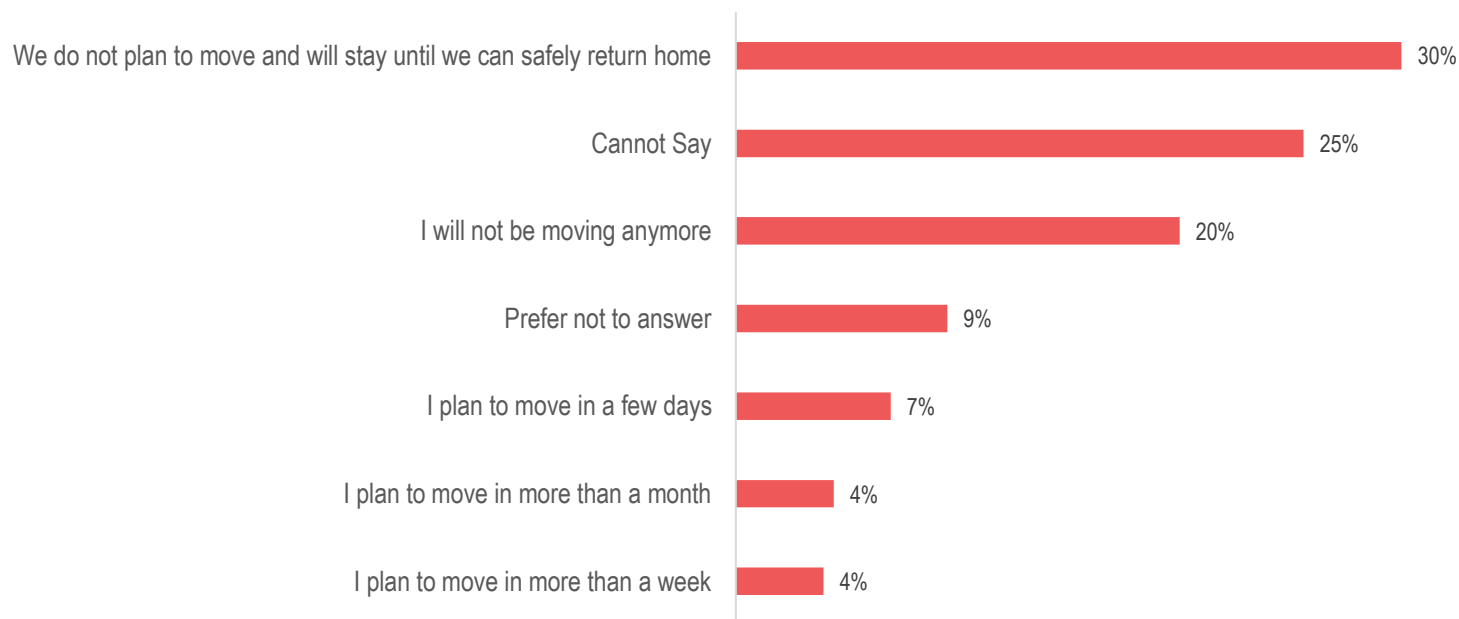
Assistance	Hosts		
	1st	2nd	3rd
Baby items	1%	1%	3%
Cash	36%	26%	24%
Clothes	5%	11%	18%
Communication (phone or internet access)	0%	0%	1%
Cooking materials	1%	0%	2%
Don't know/Refuse to answer	6%	6%	8%
Food	9%	18%	6%
Medicines	3%	5%	6%
No needs	11%	14%	16%
Sanitation and Hygiene Products	1%	2%	3%
Shelter	21%	9%	7%
Sleeping materials	1%	3%	3%
Support for livelihoods and employment	5%	1%	2%
Support with child care/education	1%	0%	1%
Support with registration/legal assistance	0%	0%	0%
Support with Transport	0%	1%	1%
Water	0%	0%	0%

Priority Needs – Marz Lens

1st Priority	Ararat	Armavir	Kotayk	Yerevan
Cash	8%	15%	29%	22%
Clothes	9%	1%	6%	2%
Communication (phone or internet access)	0%	0%	1%	0%
Cooking materials	0%	1%	0%	0%
Don't know/Refuse to answer	0%	1%	1%	1%
Food	9%	9%	8%	11%
Medicines	3%	6%	3%	2%
No needs	2%	1%	1%	1%
Sanitation and Hygiene Products	4%	0%	2%	1%
Shelter	54%	59%	47%	53%
Sleeping materials	10%	0%	0%	5%
Support for livelihoods and employment	0%	1%	0%	0%
Support with child care/education	0%	0%	0%	1%
Support with registration/legal assistance	0%	0%	0%	1%
Support with Transport	0%	1%	0%	0%
Water	0%	3%	1%	0%

Intentions to Return

% of SAs by Intentions to Return



Most SAs **do not intend to move** or have difficulties expressing their intentions

Thank you

Jeremy Wetterwald | Team Leader – Armenia

Geneva, Switzerland | Chemin de Balexert 9

+33 06 86 80 22 18 | +41 76 609 7425

impact-initiatives.org | [@Impact_init](https://twitter.com/Impact_init)

Read our [latest news](#) to learn of our work.

Do you want to stay in the know? Sign up to our [quarterly newsletter](#).

IMPACT Shaping practices
Influencing policies
Impacting lives

REACH | AGORA



UNHCR
The UN Refugee Agency



h—h
H2H Network
Humanitarian
Action Support

REACH Informing
more effective
humanitarian action