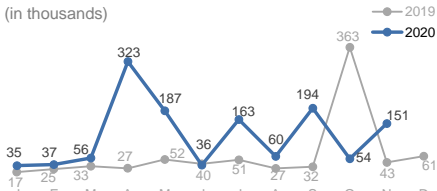


View the interactive dashboard here: <https://unhcr.github.io/dataviz-somalia-prmn/index.html>

TOTAL DISPLACEMENTS

151,000 in November
1,297,000 (Jan - Nov 2020)
709,000 (Jan - Nov 2019)

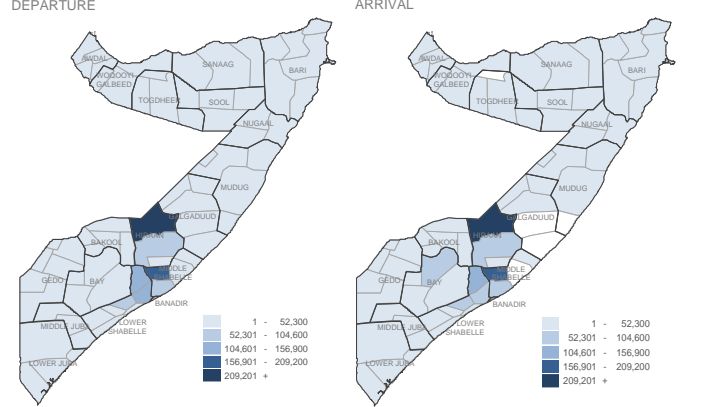
The UNHCR-led PRMN implemented in partnership with NRC reported 151,000 new internal displacements in the month of November 2020. Of these, 79,000 were triggered by flood, 57,000 related to drought or lack of livelihoods and 13,000 conflict/insecurity.



BY REGION (Jan - Nov 2020)

DEP	ARR	
Hiraan	293,070	292,310
Lower Shabelle	353,840	268,940
Middle Shabelle	257,150	250,500
Gedo	66,300	68,360
Bay	64,320	61,270
Bari	38,800	43,610
Lower Juba	35,980	37,090
Galgaduud	48,260	48,210
Mudug	26,590	30,370
Bakool	23,620	20,120
Sanaag	15,450	14,530
Middle Juba	12,280	21,890
Banadir	20,450	105,230
Awdal	8,090	7,910
Togdheer	7,800	7,350
Sool	13,570	12,420
Nugaal	9,990	5,690
Woq. Galbeed	1,870	1,630

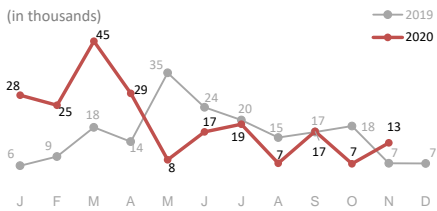
BY DISTRICT (Jan - Nov 2020)



CONFLICT / INSECURITY DISPLACEMENTS

13,000 in November
213,000 (Jan - Nov 2020)
183,000 (Jan - Nov 2019)

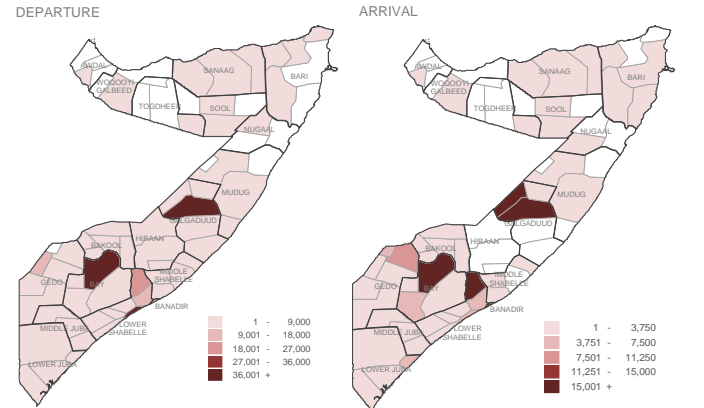
Major displacements (7,000) occurred in Dhushamarreeb district of Galgaduud region, due to clan conflict. In addition, over 2,000 individuals were displaced in Bakool due to Al-Shabaab activity, and close to 2,000 in Lower Shabelle due to military offensive activity.



BY REGION (Jan - Nov 2020)

DEP	ARR	
Lower Shabelle	80,090	29,090
Bay	43,530	43,040
Galgaduud	40,980	40,980
Gedo	16,270	19,240
Bakool	12,370	11,380
Lower Juba	7,080	8,060
Sool	2,850	2,980
Sanaag	2,650	2,450
Middle Juba	2,440	1,900
Togdheer	1,070	1,050
Mudug	1,610	1,480
Banadir	1,030	1,030
Middle Shabelle	1,000	200
Hiraan	250	250
Bari	120	750
Nugaal	100	100
Awdal	10	10
Woq. Galbeed	10	100

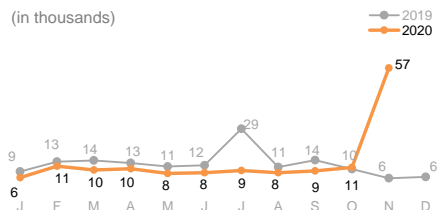
BY DISTRICT (Jan - Nov 2020)



DROUGHT RELATED DISPLACEMENTS

57,000 in November
148,000 (Jan - Nov 2020)
142,000 (Jan - Nov 2019)

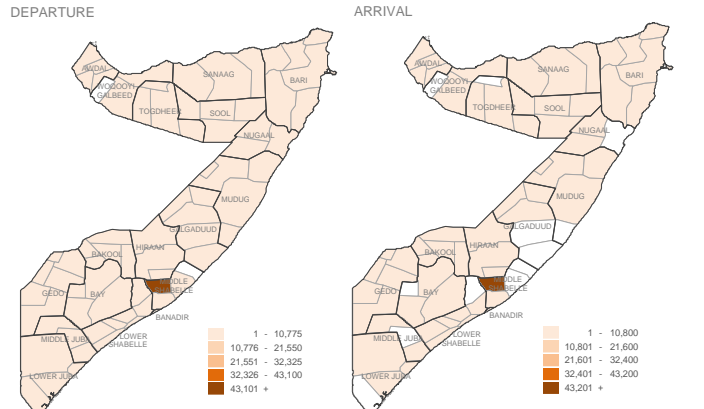
During the month, close to 43,000 persons were displaced especially in Jowhar district of Middle Shabelle due to lack of livelihoods related to locusts. In the same month, Sool (2,000) region was the most affected by new displacements where the main reason given was drought.



BY REGION (Jan - Nov 2020)

DEP	ARR	
Bay	14,310	11,320
Bari	13,020	15,640
Sanaag	11,520	10,780
Bakool	8,390	6,020
Awdal	7,940	7,770
Sool	9,270	7,660
Gedo	6,100	6,680
Lower Shabelle	7,320	2,670
Mudug	4,760	8,620
Togdheer	4,050	3,970
Hiraan	3,530	3,170
Nugaal	5,250	2,550
Lower Juba	2,280	2,250
Woq. Galbeed	1,790	1,430
Middle Juba	2,050	10,590
Banadir	570	1,060
Middle Shabelle	43,360	43,350
Galgaduud	2,930	2,890

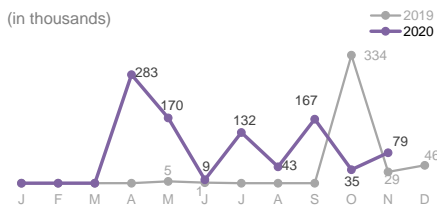
BY DISTRICT (Jan - Nov 2020)



FLOOD DISPLACEMENTS

79,000 in November
919,000 (Jan - Nov 2020)
370,000 (Jan - Nov 2019)

In November, 79,000 persons were displaced due to floods mostly in Lower Shabelle (49,000), Banadir (12,000) and Middle Shabelle (9,000) regions. The key priority needs for the affected small-scale farmers, livestock producers and traders included shelter, food, safe drinking water, mosquito nets and hygiene services.



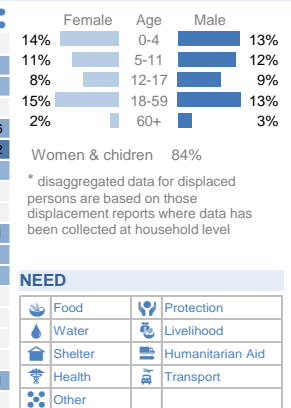
BY REGION (Jan - Nov 2020)

DEP	ARR	
Hiraan	289,230	289,140
Lower Shabelle	266,340	237,070
Middle Shabelle	212,760	206,670
Gedo	42,730	40,980
Lower Juba	25,180	25,180
Bari	23,650	23,760
Mudug	19,990	19,970
Banadir	18,830	53,420
Middle Juba	7,530	9,270
Galgaduud	4,340	4,340
Bakool	1,910	1,910
Bay	6,020	6,760
Awdal		
Sool	30	30
Woq. Galbeed	10	10
Sanaag	10	50
Togdheer		
Nugaal		

PRIORITY NEED ON ARRIVAL (Nov 2020 in %)

Region	Food	Water	Shelter	Health	Protection	Transport	Other
Awdal	32	1	1	63	1		
Bakool	50	3	1	3	36	1	5
Banadir	60	2	27	4	3	1	3
Bari	69	1	8	2	16	3	
Bay	72	2		9	1		16
Galgaduud	8	4	13	2	1		72
Gedo	67		25		3		3
Hiraan	100						
Lower Juba	78		20		1		1
Lower Shabelle	27	10	11	3	29	8	11
Middle Juba	94						5
Middle Shabelle	16	2	4		73		5
Mudug	67	5	1	2	2	17	6
Nugaal	17	6	1	3	35	35	2
Sanaag	29	12	18	4	1	30	6
Sool	40		8	17	1	32	1
Togdheer	28	1	7	11	4	37	1
Woq. Galbeed	44	24	2	1	18	10	1

AGE & GENDER (Nov 2020)*



About PRMN

The PRMN (Protection & Return Monitoring Network) is a UNHCR-led project which identifies and reports on displacements (including returns) of populations in Somalia. The network also identifies and reports on protection risks and incidents underlying such movements. Only figures collected by PRMN are reported above. Not all displacements in Somalia are captured. This dashboard should be read in conjunction with the Notes on PRMN Methodology (<https://data2.unhcr.org/en/documents/details/53888>) which outline the approach and certain limitations. The figures shown are for numbers of individuals and are based on interviews with key informants and/or displaced households at destination (unless otherwise noted). Further information and datasets available on request use contact below.

UNHCR is grateful for the generous contributions of donors who have directly contributed to the UNHCR Somalia operation in 2020

