

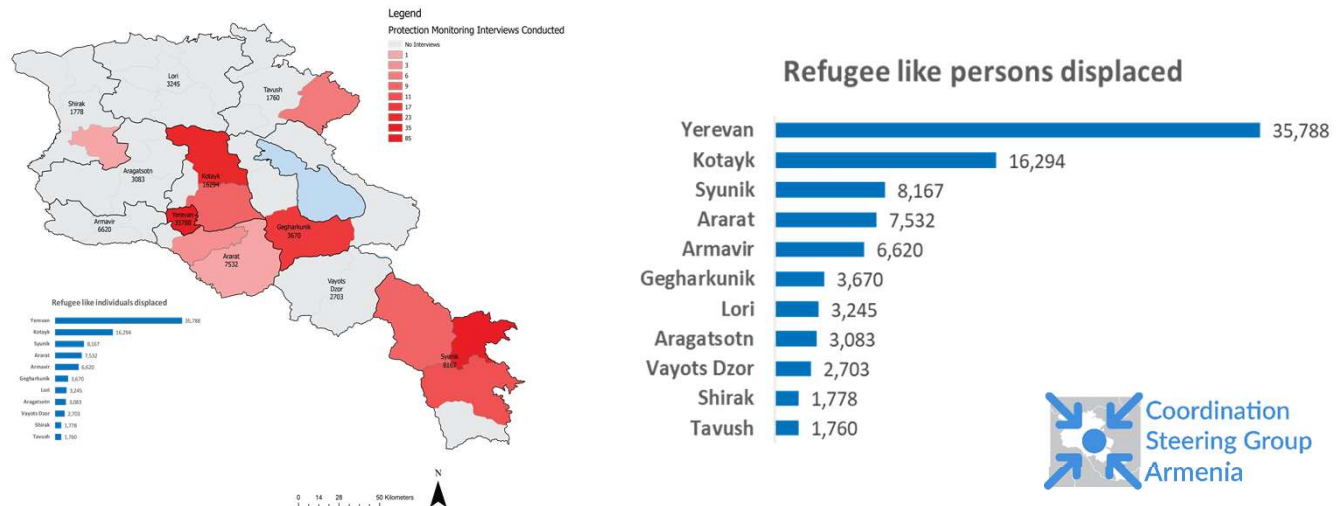
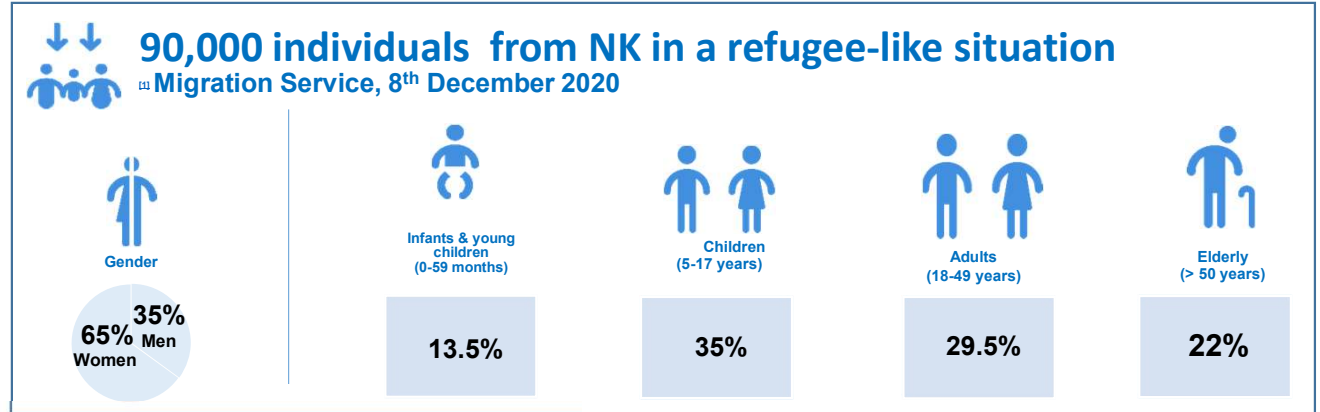
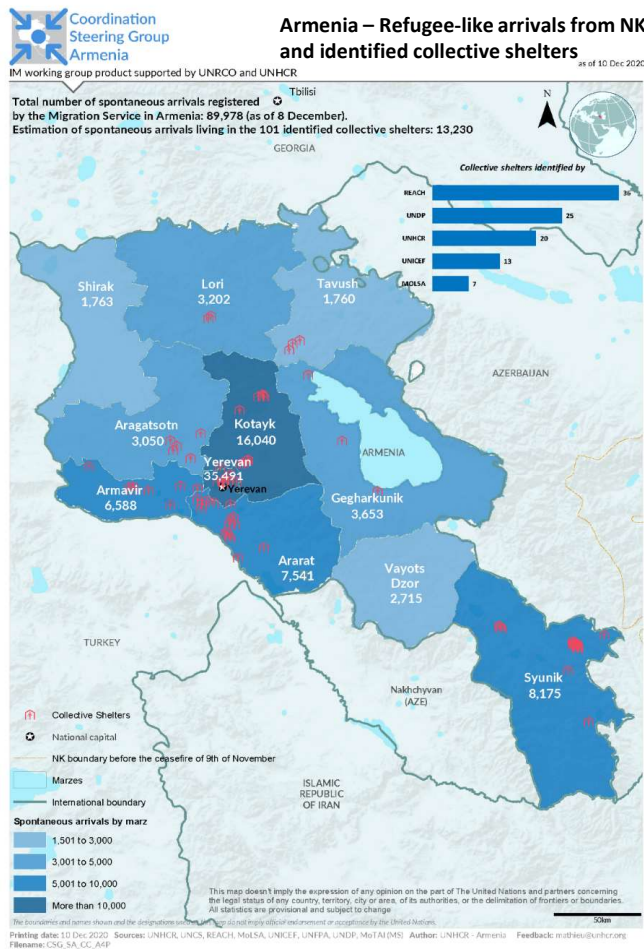
ARMENIA

Inter-Agency Response Plan 2020-2021

Yerevan, 22 January 2021



Emergency Situation Profile



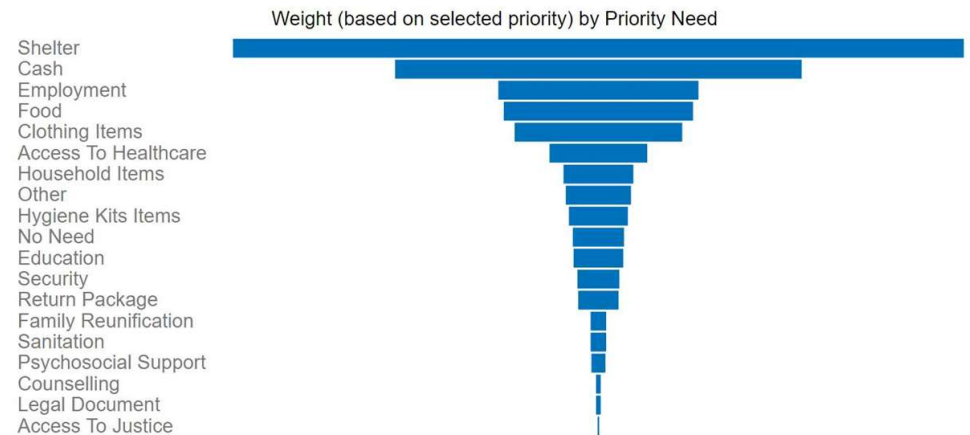
Living conditions of the refugee-like population from NK

➤ Generous support from national and local authorities

- Several Government Assistance Programmes including cash assistance
- Public buildings and facilities provided as collective hosting sites for 15- 17% of the new arrivals
- Health services and primary health services provided free of charge

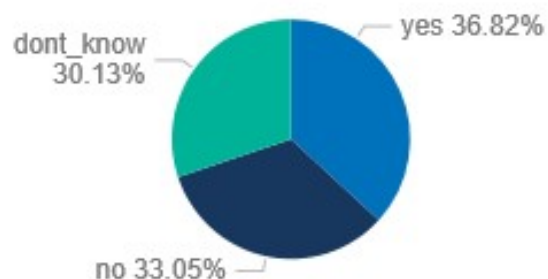
➤ Host community warmly welcomed the refugee-like new arrivals

- Large portion of the new arrivals being hosted by host community members
- 11,500 displaced school-age children from the refugee-like population currently enrolled in secondary education



Assessing intentions to return (as of 10 December)

Return intention by % of households

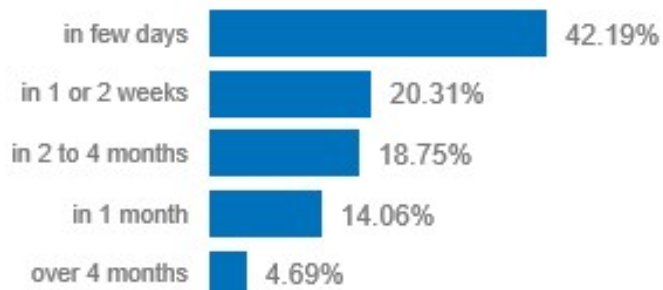


**20,000 Returns to NK from Kilikia Bus Station
between
14 November – 10 January**

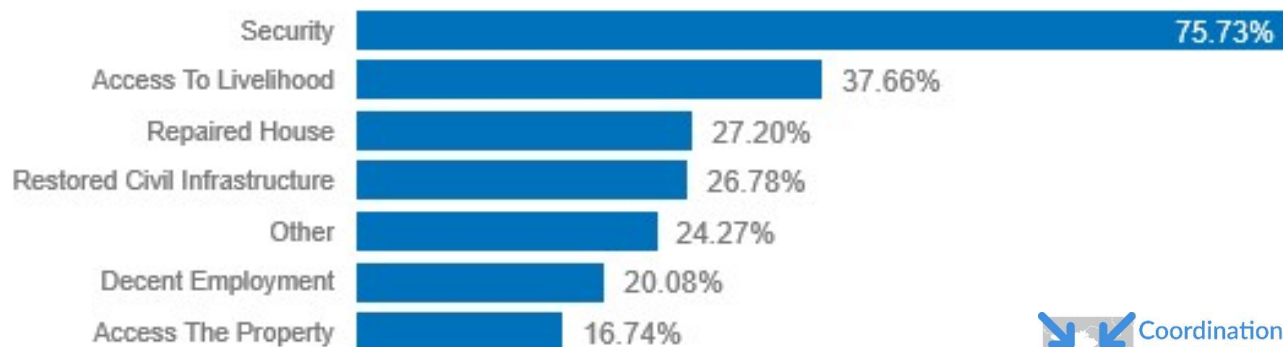
(approx. average, based on UNHCR daily “on site” return monitoring)

Conditions for return by % of households

If yes, when by % of households

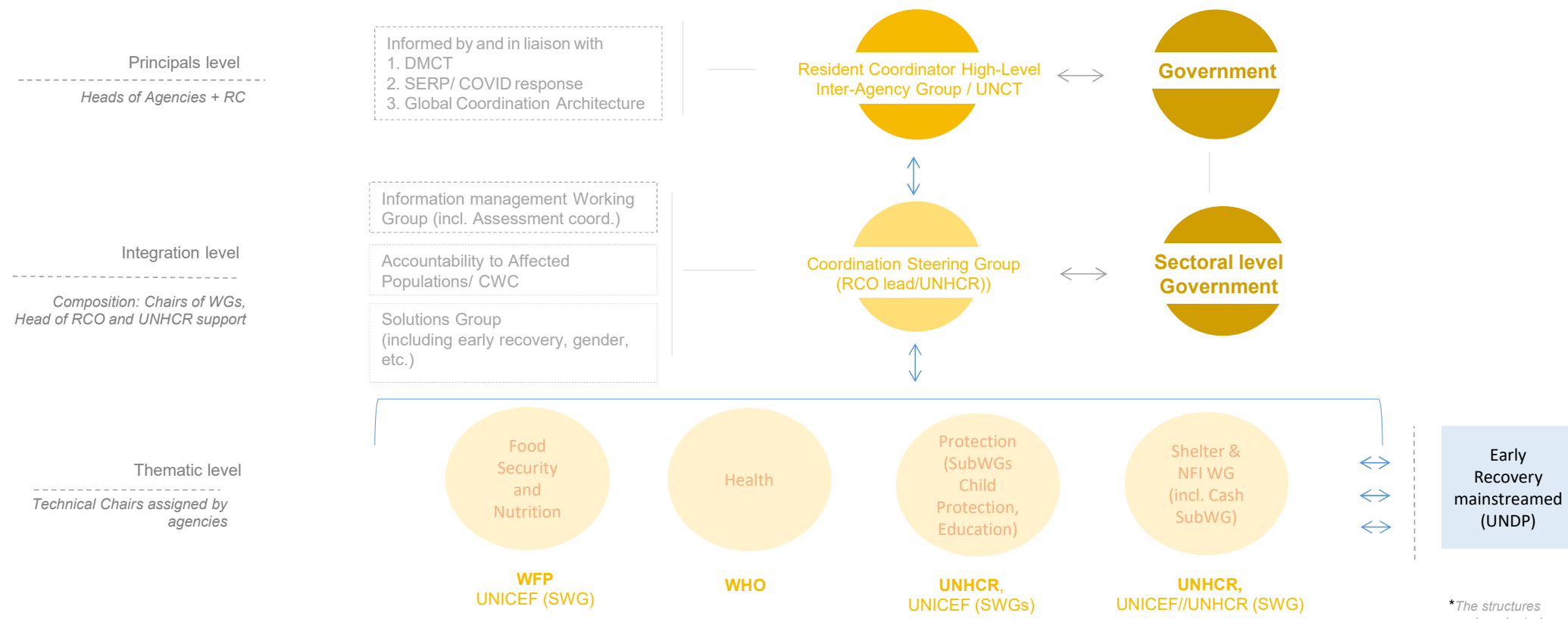


Conditions for return by % of households



Inter-Agency Coordination Architecture & Response Plan

Armenia situation – Hybrid Coordination Model



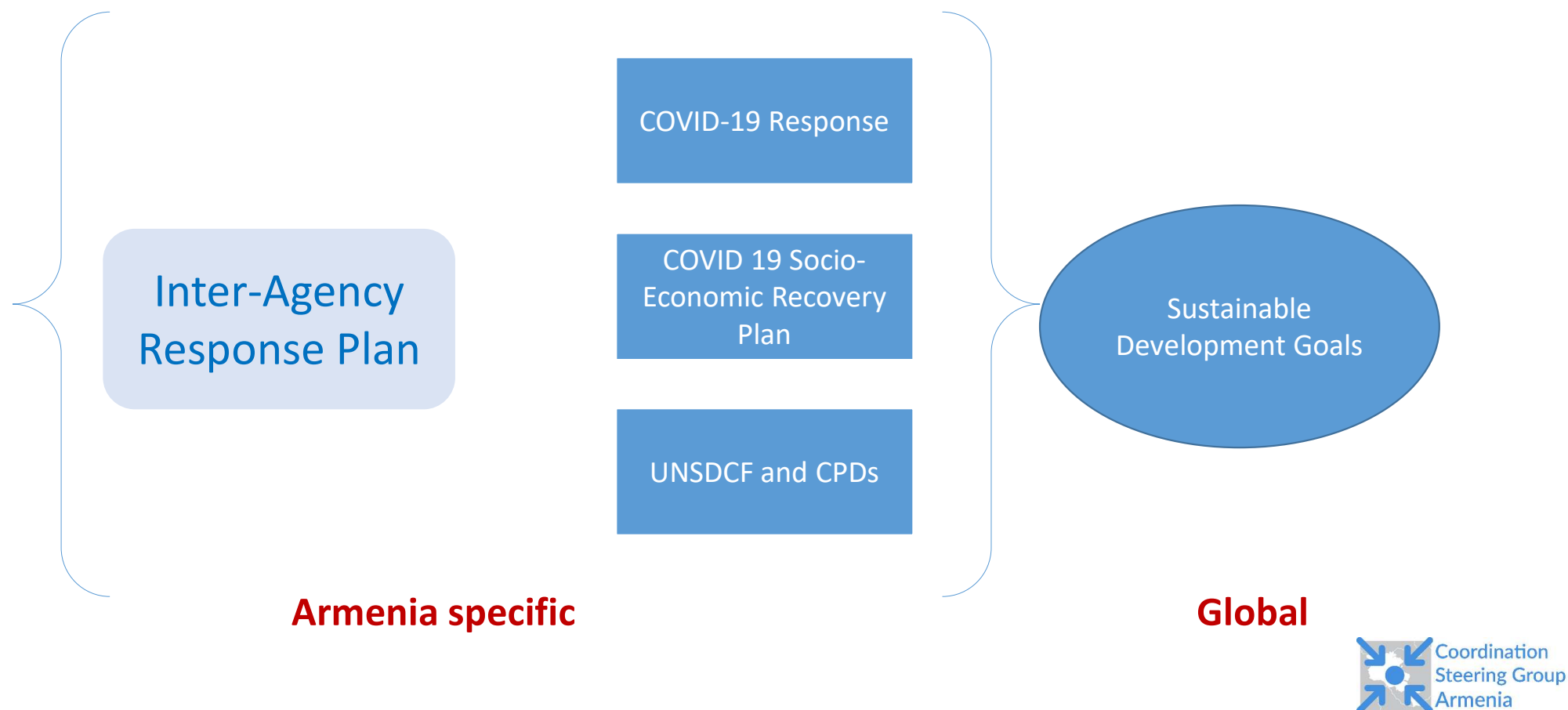
Sectoral Government representatives are represented as well as actively participating and contributing to the thematic working groups (e.g. Health, cash)

**The structures can be adapted and replicated based on context and need – depending on the activation phase of the Contingency Plan*

Inter-Agency Response Plan – Key role & strategic objectives

- Strategic Objective 1:** Assist the Government of Armenia in providing protection (including gender-sensitive) support to the refugee-like population, particularly the most vulnerable, and enable them to equally and efficiently enjoy their rights, including through the provision of legal assistance and counselling.
- Strategic Objective 2:** Strengthen inclusive access of the refugee-like population hosted in Armenia to dignified living conditions, including access to decent shelter, non-food items, food security and basic services (including social protection, health and education).
- Strategic Objective 3:** Strengthen resilience of the refugee-like population in Armenia, as well as the host community, until adequate conditions are met to facilitate dignified returns to NK.
- Strategic Objective 4:** Ensure an effective humanitarian-development nexus through linkages to existing and emerging frameworks, such as the COVID-19 Socio-Economic Response and Recovery Plan currently in place and the United Nations Sustainable Development Cooperation Framework (UNSDCF), which will govern the work of the UN in Armenia from 2021 to 2025.

Linkages with other inter-agency and multi-sectoral processes



Inter-Agency Response Plan – Process overview

Working group level

Populations in need /
targeted

Needs
overview

Response strategy
and priorities

**IARP
Strategy
and
priorities**

Validation
Workshop*

*with Government
participation

Phase 1

Individual partner level

**Project “document”
with details on:**

- Sector / sub-sector priorities
- Targeted population
- Locations
- Description of sector key activities
- Financial requirements (per Sector and per Partner)

Phase 2

Integrated level

**IARP
Final Document**

(Also considering:

- Response Monitoring Framework
- Achievements to date
- Financial Tracking System (funds mobilized)

IA-RP – Overview per Sector

Protection

Population targeted:

50,000 individuals from the Refugee-Like population from NK
10,000 persons from the Host Community population

Sector	Response Activities
PROTECTION	<u>Protection</u> <ul style="list-style-type: none"> • Protection mainstreaming and vulnerability assessments • Protection and human rights monitoring • Strengthen awareness-raising and dissemination of information • Strengthen existing protection mechanisms and social services • Provide effective, efficient and targeted assistance, including legal counselling and referrals • Strengthen the capacity and communication with communities and community-based protection mechanisms • Conduct harmonized and evidence-based advocacy • Strengthen resilience and support durable solutions • Strengthen social cohesion
	<u>Child Protection</u> <ul style="list-style-type: none"> • Ensure continuous provision of community based MHPSS (including support to child mental health care in emergency, development of child friendly spaces, training and deployment of dedicated psychologists, psychiatrists and social workers) • Ensure strong child protection system action • Work in coordination with national, regional and local authorities to ensure availability and accessibility of targeted community-based services

SECTOR / THEMATIC LEVEL	INDICATORS
PROTECTION ¹⁴	<ul style="list-style-type: none"> • # of individuals assessed through protection monitoring exercises • # of individuals reached through awareness-raising activities regarding protection concerns as well as availability of services • # of individuals participating in capacity-building activities to support the provision of quality protection services • # of individuals provided with specific protection services and case management, including the most vulnerable individuals (boys, girls, older persons and persons with disabilities) • # of individuals provided with mental health and psychosocial support including the most vulnerable individuals (boys, girls, older persons and persons with disabilities)



15 partners



69 projects



USD 4,626, 076

RESULTS TO DATE:

RNAs in October; Protection monitoring since November 2020 (941 individuals interviewed); MSNA; 100 persons received free legal counselling; Child Protection Hotline; Capacity building of 940 social service professionals; 355 children, 520 adolescents, and 394 parents have benefited from MHPSS

IA-RP – Overview per Sector

Education

Population targeted:

10,000 individuals from the Refugee-Like population from NK

2,000 persons from the Host Community population



6 partners



20 projects



USD 1,171,540

Sector	Response Activities
EDUCATION	<u>Education</u>
	<ul style="list-style-type: none">• Provide support to the national education system• Secure access of conflict-affected boys and girls to learning and development opportunities• Provide school and IT supplies to facilitate school and distant learning to refugee-like children• Mine-risk education• Capacity-building of teachers and education staff on working with girls and boys with special needs (including conflict-affected children)

SECTOR / THEMATIC LEVEL	INDICATORS
EDUCATION	
	<ul style="list-style-type: none">• # of children from the refugee-like population enrolled in host community schools¹⁴• # of temporary learning spaces, including early learning spaces, established for children from the refugee-like population¹⁵

RESULTS TO DATE:

5,100 school kits distributed;
11,500 children enrolled in
secondary education; Peer-to-
peer learning for 100 refugee-like
students;
Informal education activities
conducted in collective
sites

IA-RP – Overview per Sector



Food and Nutrition

Population targeted:

60,000 individuals from the Refugee-Like population from NK

18,000 persons from the Host Community population



8 partners



30 projects



USD 12,607,688

Sector	Response Activities
FOOD SECURITY & NUTRITION	<ul style="list-style-type: none"> Sustain critical food assistance to the refugee-like population Ensure equity of access to food assistance support Prioritize infant and young child feeding support to prevent malnutrition Conduct nutritional monitoring of high-risk groups Support critical assistance to the refugee-like population and part of the households hosting them in the protection and restoration of their livelihood assets linked to food production

SECTOR / THEMATIC LEVEL	INDICATORS
FOOD SECURITY & NUTRITION	<ul style="list-style-type: none"> # of individuals who receive monthly food assistance # of individuals who receive nutritional support activities in a given month (disaggregated by month) # of individuals who benefited from having their means of existence protected, reconstituted or created

RESULTS TO DATE:
17,965 persons assisted in November and 18,074 in December 2020 (of which 8,400 from host communities)

IA-RP – Overview per Sector



Health

Population targeted:

90,000 individuals from the Refugee-Like population from NK

18,000 persons from the Host Community population



10 partners



35 projects



USD 6,476,309

Sector	Response Activities
HEALTH	<ul style="list-style-type: none">• Ensure access to primary health care through provision of health kits and medical supplies, deployment of mobile clinics, support to referrals• Ensure access to secondary health care• MHPSS activities (including counselling services, referral to specialized clinical psychological or psychiatric services, training of medical staff, etc.)• Communicable diseases control (beyond COVID-19)

SECTOR / THEMATIC LEVEL	INDICATORS
HEALTH	<ul style="list-style-type: none">• # of individuals referred to primary and secondary health care through interventions of health partners• % of target population receiving medical supplies• % of medical facilities who have staff trained to identify mental disorders and to support people with mental health and psychosocial problems

RESULTS TO DATE:
100 Oxygen concentrators for MoH;
500 trauma kits, 700 surgical kits, 20 000 pieces of glucometers and testing strips, 40 000 pieces of antigen rapid test, 11 patient monitors and spare parts for oxygen concentrators

IA-RP – Overview per Sector



Shelter and non-food items

Population targeted:

50,000 individuals from the Refugee-Like population from NK

18,000 persons from the Host Community population



12 partners



29 projects



USD 28,410,303

Sector	Response Activities
SHELTER & NFIs	<ul style="list-style-type: none">• Provide support to 50,000 refugee-like individuals and 15,000 individuals from the host community to access adequate shelter in all regions in Armenia, including:<ul style="list-style-type: none">- Support to cover rental costs and possibly utilities;- Minor repairs;- Upgrading of some shelters including rehabilitation and improvement of water and sanitation systems• Provision and distribution of NFI kits to 50,000 refugee-like individuals and 18,000 individuals from the host community, including personal hygiene supplies/kits, domestic items (household hygiene items), kitchen items and winterizations kits (including bed frames, mattresses, warm blankets, sheets and pillows)• Conduct regular post-distribution monitoring <p><i>* The above listed key activities are expected to be implemented either in the form of cash (pending further clarification on its feasibility) or in-kind.</i></p>

SECTOR / THEMATIC LEVEL	INDICATORS
SHELTER & SITE MANAGEMENT	<ul style="list-style-type: none">• # of collective sites/centres receiving multiple improvements/maintenance (suggestion)• # of HHs/individuals benefitting from improvement/maintenance to collective sites/centres• # of site managers provided with trainings and/or technical support• # of collective sites with site representation/site committees established from within the displaced community• # of collective sites with female representation in the site committees or established women's committees

RESULTS TO DATE:
Distribution of CRIs to
10,577 refugee-like
individuals in November;
21,000 winter blankets,
648 heaters, 2,300
foldable beds;
16,000 individual
hygiene kits

IA-RP – Overview per Sector

Early Recovery

Population targeted:

90,000 individuals from the Refugee-Like population from NK

18,000 persons from the Host Community population



13 partners



29 projects



USD 8,830,278

Sector	Response Activities
EARLY RECOVERY	<ul style="list-style-type: none">• Provision of livelihood grants to support micro and small businesses, and self-employment income generating activities for the refugee-like population• Provision of vocational and entrepreneurship trainings for the refugee-like population• Strengthening capacities to increase employability and entrepreneurial opportunities of the refugee-like population, as well as host communities• Needs assessments in collaboration with the IM WG, focusing on key aspects of early recovery: governance and capacity needs, livelihoods, socioeconomic recovery, public services, infrastructure, social cohesion, mine action and community resilience

SECTOR / THEMATIC LEVEL	INDICATORS
EARLY RECOVERY	<ul style="list-style-type: none">• # of individuals supported through Cash-for-Work related interventions or other employment-related assistance• # of individuals benefiting from vocational or business trainings or supported in establishing or scaling up Small Business Enterprises• # of individuals benefiting from rehabilitation/construction of community buildings for social use and infrastructure

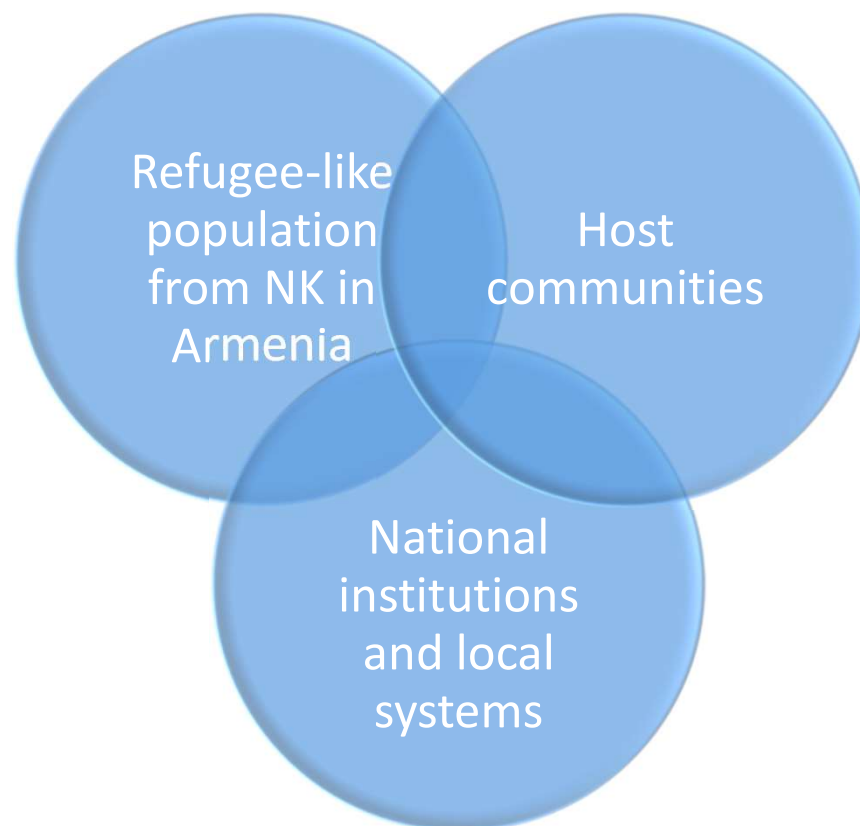
RESULTS TO DATE:
LED street lighting
installed in 3
communities;
100 tons of fuel
briquetting provided to
50 refugee-like and host
families in Lori region

Examples: Individual Partner Project Submissions

Requesting Agency / Partner	Sector	Key Priority	Total Activity Requirement (US\$)	Assistance modality	People Directly Targeted (# individuals)	Geographic Area	Key Activities Description
<i>(Name of the AI-RP Partner)</i>	<i>(If project has multiple sectors, please list each)</i>	<i>(Precise here under which Key Priority identified by your sector, the activity would fit)</i>	<i>(Provide the total cost of the project)</i>	<i>(Precise if assistance will be in-kind, CBI or other)</i>	<i>(Number of expected beneficiaries of this)</i>	<i>(first-level and if relevant second-level administrative)</i>	<i>(Describe the key activities under this activity, as well as the costing methodology and beneficiary selection criteria; also include here a short comment on contingency measure in case the assistance modality is planned but not feasible)</i>
Mission East	Protection	Strengthening the capacity and communication with communities and community-based protection mechanisms	20,000	Non Applicable	750	Vayots Dzor	multipurpose community center and PSS activities - duration 3 m
Parnering School	Protection	Provision of effective, efficient and targeted assistance and support through effective referrals or direct assistance through social and legal counselling and other humanitarian response programmes.	80,000	Non Applicable	60	All	Provision of psychosocial support and 21st century life / educational skills to 60 young soldiers (aged 18-23) handicapped or seriously wounded in the war to provide mental rehabilitation, help them get motivated and start learning to live, earn and secure their own future by means of new resources and capabilities. The first phase of the project implies basically professional MHPSS support to help beneficiaries recover and be ready for life, education and work; in the second phase the educational component will join. Duration of the project: three to six months. Costing is based on average calculations of costs per beneficiary including technical support (for example, gadgets for online learning) and professional team wage multiplied by number of people benefiting directly from this project. Beneficiary selection criteria is clear-cut: fact of military service during the war, fact of disability or serious harm to physical health, age.
ARCS	Protection	Awareness raising and dissemination of information to prevent GBV and exploitation and facilitate access and enjoyment of rights and services.	150,000	Non Applicable	2,000	All	Provide tracing service to the Armenian public to restore family links (RFL) for families and individuals affected by the Nagorno-Karabakh conflict.
ARCS	Protection	Activities to reinforce resilience and support durable solutions	11,000	Non Applicable	300	All	Train teachers at primary schools with children from conflict-affected areas on Teaching Tolerance
ARCS	Protection	Strengthening the capacity and communication with communities and community-based protection mechanisms	17,000	Non Applicable	500	All	Humanitarian education conducted at schools with children from areas affected by the conflict.
ARCS	Protection	Activities to reinforce resilience and support durable solutions	20,000	Non Applicable	240 (12 groups covering 20)	all	Establish and assist support groups for women
CARE	Protection	Awareness raising and dissemination of information to prevent GBV and exploitation and facilitate access and enjoyment of rights and services.	200,000	Non Applicable	10,000	All	Raise awareness of communities on GBV risks (GBV-related risks can exist in the general environment, within families and communities, and in humanitarian service provision), provide information on safe referral pathways (ie services provided to GBV survivors by specialized services), cash to support GBV survivors. Ensure that frontline workers - who directly interface with affected populations –are aware of how to respond to a survivor who needs support. Provision of capacity-building to non-GBV specialists on how to receive a

Inter-Agency Response Plan - Specificities

- Host community needs to be included in planning figures and targets
- Inclusion of Host Community, resilience and self reliance for all.
- Protection and Solution oriented
- Inclusion of development actors
- Link with national development plans



Financial Requirements per sector

Sector	Protection	Education	Shelter & NFIs	Health	Food & Nutrition	Early Recovery	Total in US \$
Total in US \$	4,626,076	1,171,540	28,410,303	6,476,309	12,607,688	8,830,278	62,122,194

KEY FACTS: PLANNED RESPONSE (October 2020 – June 2021)

90,000

Refugee-like
assisted
population

US \$ 62 M

Financial
Requirements

6

Key Sectors

35

Partners engaged
in the Response

188

Humanitarian
and resilience
projects
Partners

**THANK YOU
&
Questions, please**