

BURUNDI Joint Refugee Return and Reintegration Plan

January - December 2021

AT A GLANCE

2021 PLANNED RESPONSE

143,000

PROJECTED
RETURNEES IN 2021

120,000

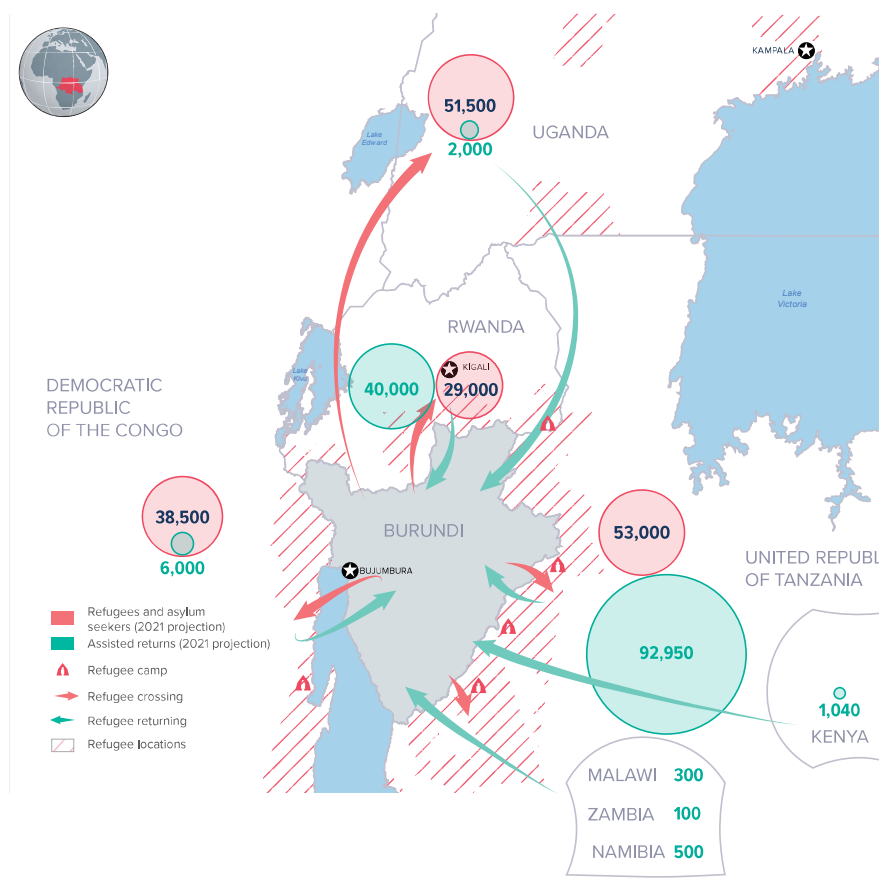
ASSISTED
RETURNEES BY END
2020

US\$104.3M

2021 FINANCIAL
REQUIREMENTS

11

APPEALING
PARTNERS



PROJECTED REFUGEE RETURNS

	Assisted Refugee Returns by 31 Dec 2020	Projected Returns (Assisted and Self-Organized) by 31 Dec. 2021
DRC	2,130	6,000
Rwanda	7,896	40,000
Tanzania	109,419	92,950
Uganda	233	2,000
Kenya	802	1,040
Malawi	-	300
Zambia	9	100
Namibia	-	500
Total	120,494	142,890

OVERVIEW

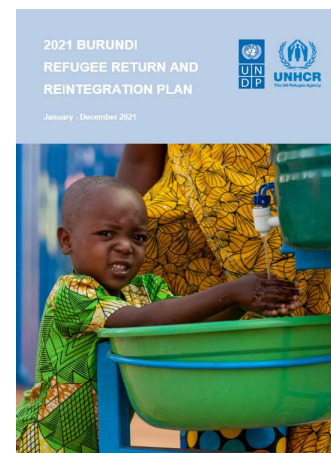
The Joint Refugee Return and Reintegration Plan (JRRRP) is an integrated inter-agency response to immediate humanitarian needs as well as to the longer-term resilience and reintegration needs of Burundian returnees and their communities of return. The JRRRP aims to ensure the sustainable return and reintegration of Burundi refugees from five main countries of asylum (Tanzania, Rwanda, Democratic Republic of the Congo, Uganda and Kenya).

A core objective of the JRRRP is to assist displacement-affected communities in six main provinces of return (Ruyigi, Makamba, Muyinga, Kirundo, Cancuzo and Rutana), by strengthening their absorption capacity, collective resilience, and boosting socio-economic recovery and development to ensure that the reintegration support can be durable and beneficial for the entire population. Reintegration activities seek to strengthen social networks and build resilience capacities and risk mitigation. The plan supports 143,000 refugee returns projected in 2021, about 120,000 returnees from previous year.

The plan brings together 19 partners within Burundi, including Government ministries, UN agencies & NGOs. Robust support by donors and other stakeholders is crucial to ensure the sustainable reintegration of the increasing number of refugee returnees.

The full 2021 Burundi JRRRP can be accessed online from the Burundi Situation Data Portal:

<https://data.unhcr.org/en/situations/burundi>



2021 STRATEGIC OBJECTIVES

The 2021 Regional RRP for the Burundi situation is guided by six regional strategic objectives:

1. Ensuring a **dignified and efficient reception** of refugee returnees, including registration, profiling, support at the border and the transit centres, transport, as well as the provision of immediate assistance for the most vulnerable.
2. Creating a **safe environment and ensuring access to essential services**, including food, safe and adequate shelter, water and sanitation, health and nutrition, education, protection, critical infrastructure, income-generating activities and self-reliance opportunities. This includes supporting **service provision** in the communities of return.
3. Promoting **durable solutions** for displacement-affected populations, including IDPs, in the areas of return.
4. Supporting and reinforcing existing social capital assets that can facilitate mediation and conflict resolution efforts for the **peaceful coexistence of communities**.
5. **Strengthening the Rule of Law and creating conducive conditions for safe access to justice** and administrative and legal support services, with a specific focus on birth registration of children born in displacement.
6. **Responding to the specific needs of children and adolescent girls and boys**, including their participation in community initiatives for peacebuilding and social cohesion.

2021 FINANCIAL REQUIREMENTS

	REPATRIATION	REINTEGRATION	GRAND TOTAL
Protection	3,114,745	14,866,756	17,981,501
Education		12,243,691	12,243,691
Food Security	8,383,758		8,383,758
Health & Nutrition		8,542,579	8,542,579
Housing, Land and Property		11,283,396	11,283,396
Livelihoods and skills development		14,294,920	14,294,920
Shelter and NFIs	5,069,112		5,069,112
WASH		6,880,586	6,880,586
CBI	19,668,434		19,668,434
GRAND TOTAL	36,236,049	68,111,929	104,347,979

REGIONAL COORDINATION

The 2021 JRRRP brings together 19 partners in Burundi and includes Government ministries, UN agencies and NGOs, including the Ministry of Interior, the Ministry of Human Rights, Social Affairs and Gender, the Ministry of Education, the Ministry of Health, the Ministry of Youth, UNHCR, UNDP, UNICEF, UNFPA, FAO, UN Women, WFP, WHO, UNAIDS, IOM, CARE, DRC, IRC and JRS. The General Director for the Repatriation, Reintegration and Reinstallation of the Ministry of Interior manages the coordination of refugee returns with the support of UNDP (as the lead for reintegration) and UNHCR (as the lead for repatriation) and the remaining JRRRP partners.

The JRRRP complements existing humanitarian and development plans, such as the Burundi Regional Refugee Response Plan, the Humanitarian Response Plan (HRP) and the Burundi Strategy for Socio-Economic Reintegration and strengthens the linkages between humanitarian assistance and development interventions to enhance the self-reliance of returnees and affected communities. Through this comprehensive approach JRRRP partners leverage synergies across the humanitarian-development-nexus, fully in line with the 2030 Agenda for Sustainable Development, anchored in the principle of “leaving no one behind”.

FOR MORE INFORMATION

Burundi Situation Data Portal - <https://data.unhcr.org/en/situations/burundi> **Ms. Simone Schwartz-Delgado**, Snr. Inter-Agency Coordination Officer, schwartz@unhcr.org; **Ms. Joyce Wayua Munyao-Mbithi**, Snr. Donor Relations Officer, munyao@unhcr.org

JRRRP APPEALING PARTNERS

- FAO
- International Rescue Committee
- UNDP
- UNHCR
- Help a Child
- UNFPA
- UN Women
- IOM
- Jesuit Refugee Service
- UNICEF
- WFP