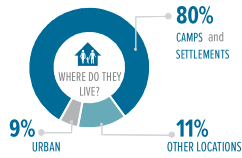
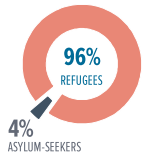


4.72 MILLION

REFUGEES AND ASYLUM-SEEKERS

KEY STATISTICS



29% BOYS
BELOW 18 YRS



28% GIRLS
BELOW 18 YRS



20% MEN
18+ YRS



23% WOMEN
18+ YRS



3% ELDERLY
ABOVE 60 YRS



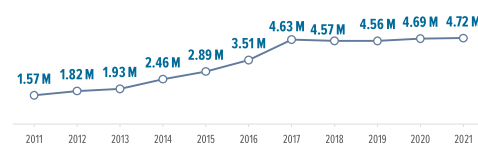
TOTALS BY COUNTRY OF ORIGIN

(to the nearest 100)

South Sudan	2.15 M
D.R. Congo	722,263
Somalia	538,686
Sudan	351,052
Eritrea	324,854
Burundi	313,061
Other	158,961
Ethiopia	140,456
Rwanda	20,866

ANNUAL TREND OF DISPLACEMENT

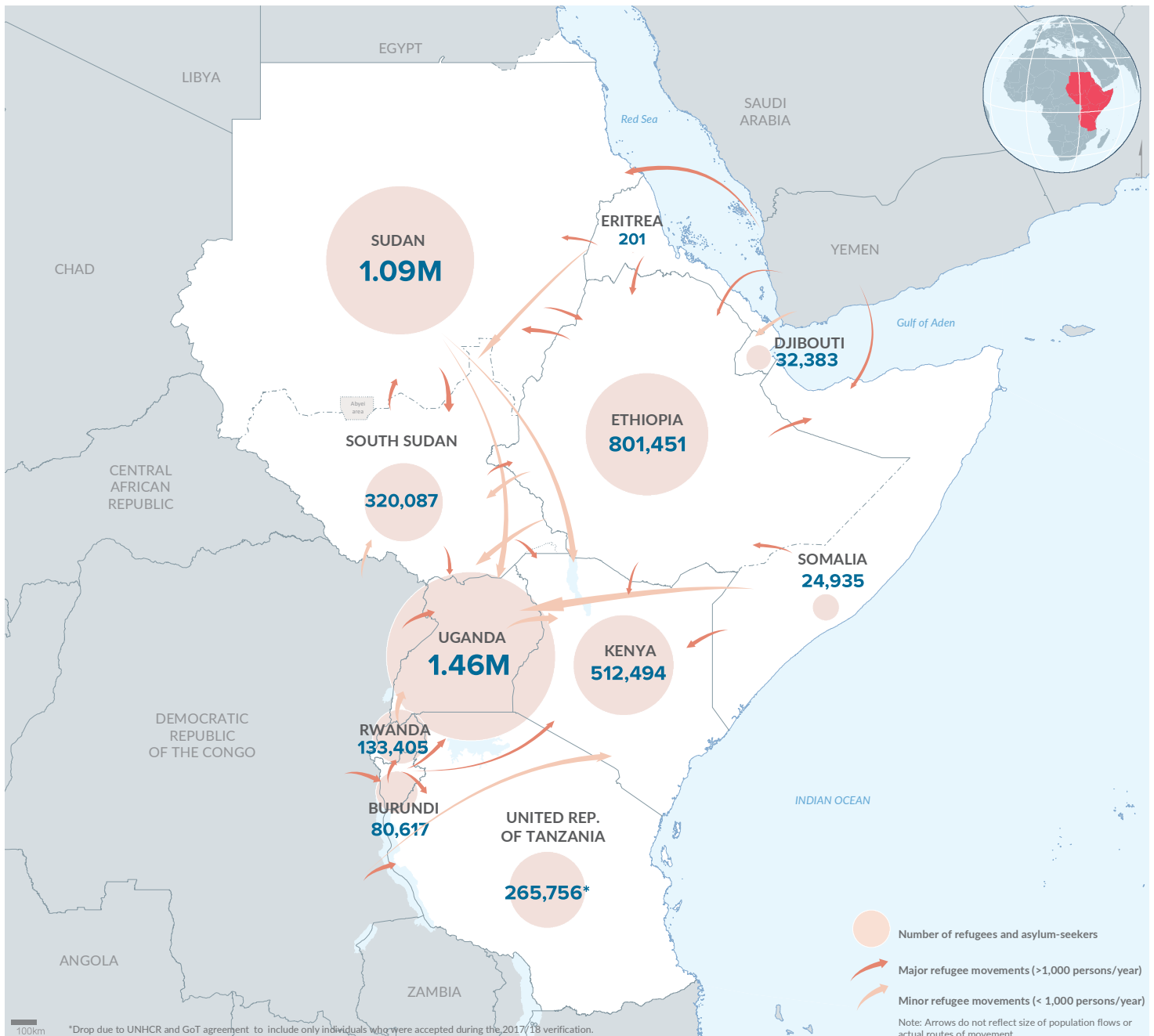
| 2011 to 2021



* The decrease in population in 2018/2019 is attributed to the completion of a countrywide population verification exercise in Uganda and Ethiopia; as well as spontaneous refugee returns to Burundi and South Sudan

TOTALS BY HOST COUNTRY

Uganda	1.46M
Sudan	1.09M
Ethiopia	801,451
Kenya	512,494
South Sudan	320,087
Tanzania	265,756
Rwanda	133,405
Burundi	80,617
Djibouti	32,383
Somalia	24,935
Eritrea	201



The boundaries and names shown and the designations used on this map do not imply official endorsement or acceptance by the United Nations. Final boundaries between the Republic of Sudan and the Republic of South Sudan and Somalia and Ethiopia has not yet been determined. Final status of the Abyei area is not yet determined.