

KEY FIGURES

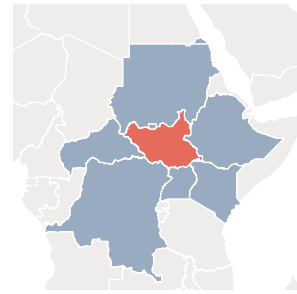
4.72 MILLION
REFUGEES & ASYLUM-SEEKERS

8.74 MILLION
INTERNALLY DISPLACED PERSONS

162,525
REFUGEE RETURNEES IN 2020

The East and Horn of Africa and Great Lakes region is host to some 4.72 million refugees and asylum seekers, the majority (2.15 million) from South Sudan. A further 8.74 million people are internally displaced in the region, as a result of conflict and natural disasters. Some 162,525 refugees returned to their countries of origin in 2020 with 2021 figures to be provided in future updates.

SOUTH SUDAN SITUATION



2.21 million
South Sudanese refugees in neighbouring countries

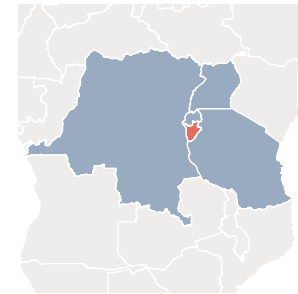
1.62 million
Internally displaced in South Sudan

357,450
Refugee returnees since Nov 2017

320,087
Refugees hosted in South Sudan

Returnees as of December 2020

BURUNDI SITUATION



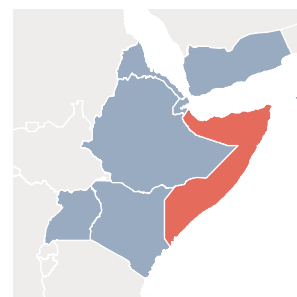
302,529
Burundian refugees in neighbouring countries

113,841
Internally displaced in Burundi

113,444
Refugee returnees since Sept 2017

80,617
Refugees hosted in Burundi

SOMALIA SITUATION



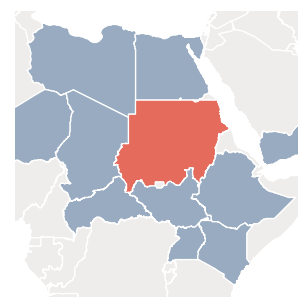
649,890
Somali refugees in neighbouring countries

2.65 million
Internally displaced in Somalia

92,150
Refugee returnees since Dec 2014

24,935
Refugees hosted in Somalia

SUDAN SITUATION



788,918
Sudan refugees in neighbouring countries

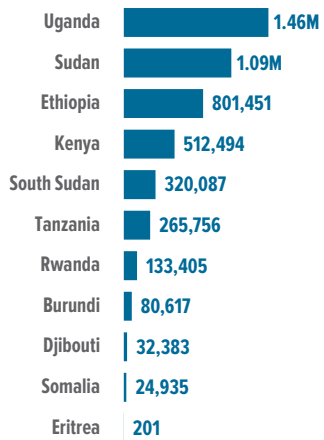
2.55 million
Internally displaced in Sudan

2,060
Refugee returnees (2019)

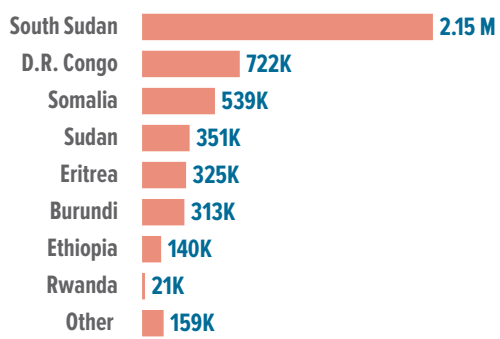
1.09 million
Refugees hosted in Sudan

REFUGEES AND ASYLUM-SEEKERS

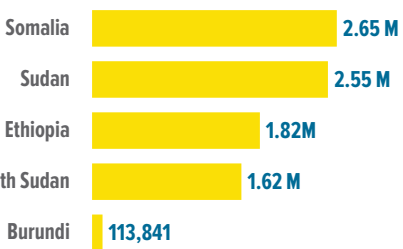
HOST COUNTRIES



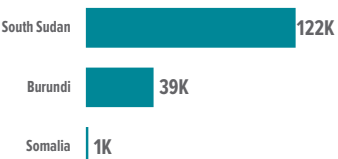
SOURCE COUNTRIES



INTERNALLY DISPLACED PERSONS

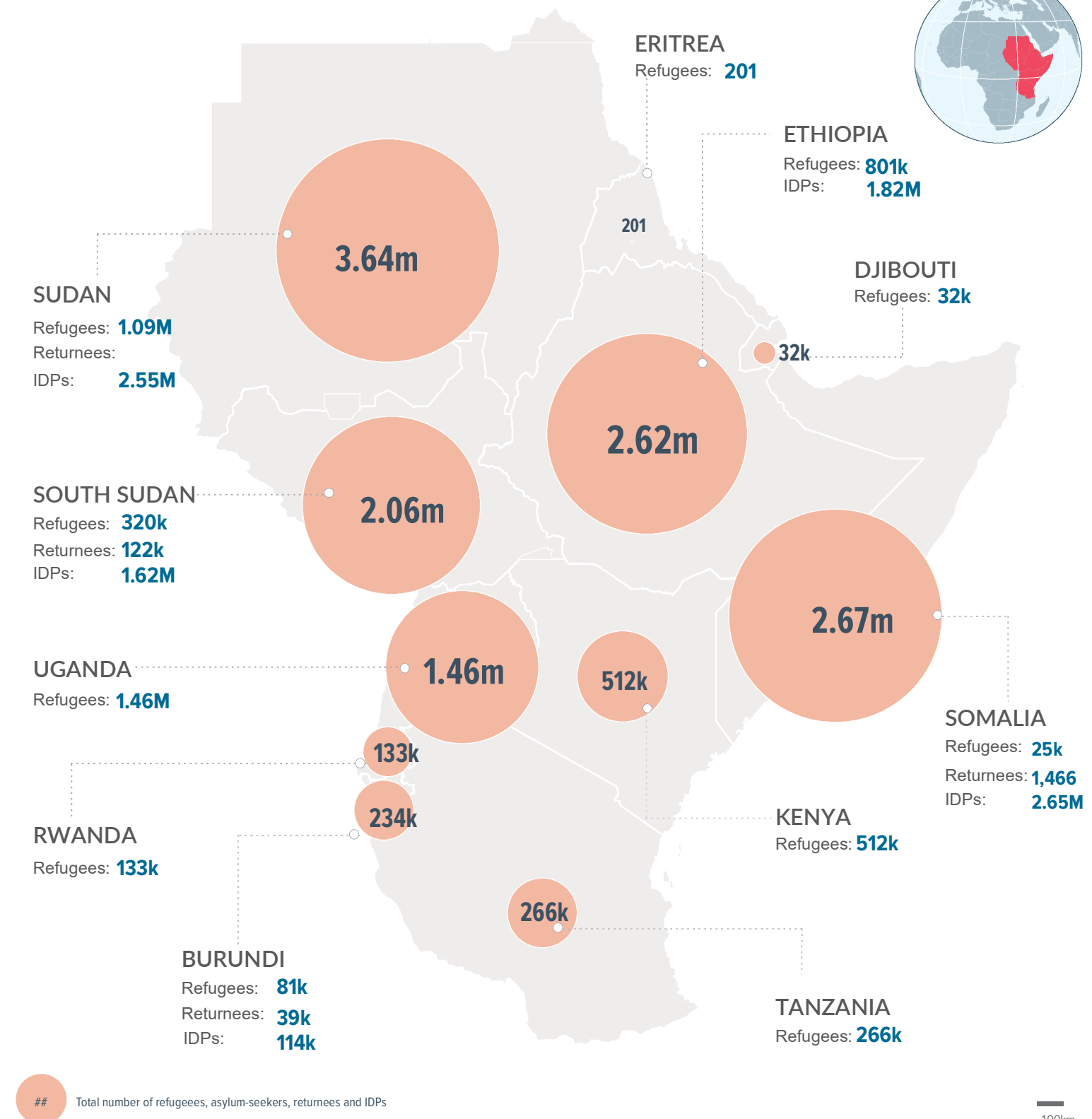


REFUGEE RETURNEES IN 2020



Somalia - assisted and spontaneous returnees; South Sudan - spontaneous

REFUGEES, ASYLUM-SEEKERS, REFUGEE RETURNEES and IDPs as of February 2021



Total number of refugees, asylum-seekers, returnees and IDPs

The boundaries and names shown and the designations used on this map do not imply official endorsement or acceptance by the United Nations. Final boundaries between the Republic of Sudan and the Republic of South Sudan and Somalia and Ethiopia has not yet been determined. Final status of the Abyei area is not yet determined.