

# Rwanda

March 2021

## HIGHLIGHTS

**A. Rwanda hosted a total of 133,029 refugees and asylum seekers** at the end of March 2021.

The population of concern included mainly persons from the Democratic Republic of the Congo (58.4%) and Burundi (41.3%).

**B. HE Amira El Fadil**, the AU Commissioner for Health, Humanitarian Affairs, and Social Development and her delegation conducted a four-day mission to Rwanda (16-19 March 2021). Among other activities, the delegation visited ETM Gashora TC.

**C. 85% of urban refugees and students** are enrolled in the national **Community Based Health Insurance (CBHI)** initiative. This is a marked improvement from 64% in 2019-2020. The CBHI cycle runs from 1 July to 30 June.

## KEY INDICATORS

### 30

Cases of COVID-19 were identified among refugees in March 2021 and 462 since the beginning of the pandemic. Of the cases, 10 were active and 4 deaths were recorded.

### 125

Refugees departed for resettlement and complementary pathways in March and 156 since January 2021.

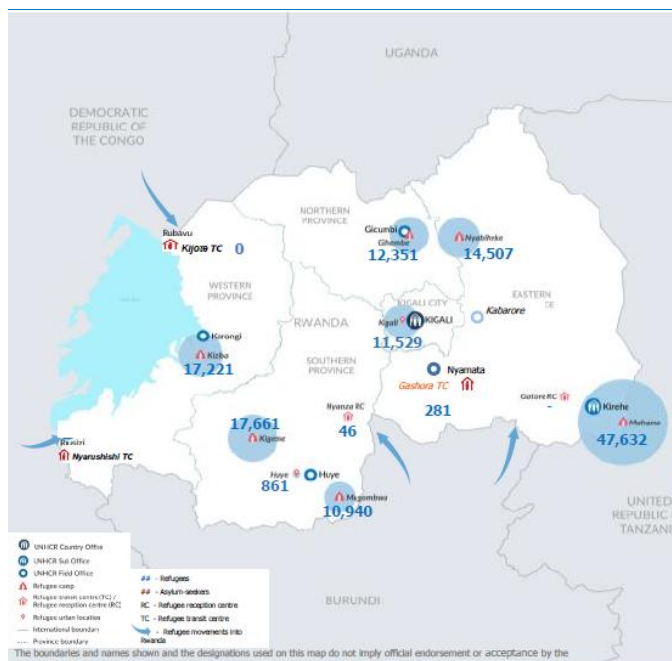
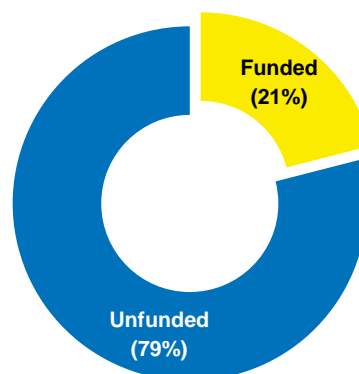
### 281

Refugees and asylum seekers from Libya were in ETM Gashora Transit Centre.

## FUNDING (AS OF 30 MARCH 2021)

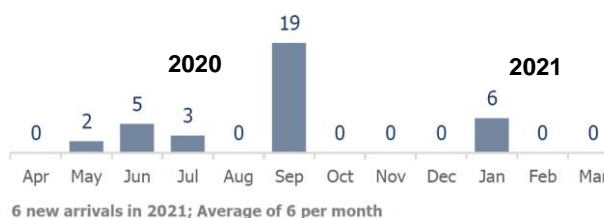
### USD 92.3 million

is requested for Burundi, DR Congo, Emergency Transit Mechanism (ETM) in Rwanda.

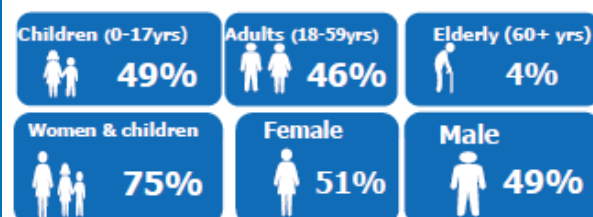


## POPULATION OF CONCERN

### MONTHLY TREND OF NEW ARRIVALS



## DEMOGRAPHICS



## Burundi Refugee Response

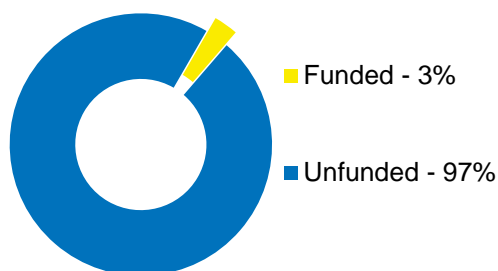


Burundian refugees in Rwanda are voluntarily returning home. Bugesera District @UNHCR/Eugene Sibomana

### FINANCIAL REQUIREMENT

## USD 42.1 million

FUNDING (AS OF 30 MARCH 2021)



### Achievements & Highlights



#### PROTECTION

- The authorities issued 167 birth certificates to refugee children in the Mahama camp.
- 26 Best Interest Assessments (BIA) and 07 Best Interest Determinations (BID) were completed to assess the wellbeing of the children and find solutions for their concerns.
- 35 new SGBV cases were identified in Mahama camp, including cases of pregnant children, and the survivors were assisted accordingly.
- 827 Congolese Refugees arrived from the high-risk areas in Kigeme camp to Mahama camp.



#### DURABLE SOLUTIONS

- Five convoys of 5,741 refugees voluntarily returned to Burundi in safety and dignity.
- A total of 13,236 refugees returned since January, 33% of the 40,000 targeted in 2021.
- 3,576 individuals from 1,002 families registered their intentions to return.
- One individual case was submitted for resettlement consideration in March 2021 and 13 since January 2021.
- 13 individuals have departed for resettlement since January 2021.



#### EDUCATION

- 17,003 refugee students were enrolled in schools, including 6,241 in ECD, 7,548 in primary, and 2,849 in secondary education. 365 of the students have a disability and 49% are females.



#### HEALTH

- Crude and under 5 mortality rates were 0.2 and 0.26 deaths/1,000/month, respectively.
- 15,978 refugees and the host community accessed primary health care services in the camps.
- 374 refugees and the host community members were referred for secondary and tertiary health services.
- 527 refugees with HIV/AIDS received antiretroviral treatment, nutritional and psychosocial support.
- 62,016 male condoms were distributed as a preventive measure of new cases of HIV/AIDS, STIs, and unwanted pregnancies.
- 232 newborn babies were delivered in the camps, with 98% of them were attended to by trained health professionals.
- 5,025 women of reproductive age attended family planning services.

- 6,032 refugees were tested for COVID-19 in the Mahama camp, and 29 of them tested positive.



### FOOD SECURITY AND NUTRITION

- 47,658 refugees of 14,146 families in the Mahama camp received food assistance through monthly support of cash or in-kind food provided by the WFP.
- WFP started the 60% cut on cash for food assistance to refugees in camps.
- 20,209 primary and secondary school children were assisted with school feeding.
- 280 children with severe disabilities and 580 adults with severe mental health and psychosocial issues in the Mahama camp were supported through a supplementary feeding program to reduce their exposure to malnutrition issues and improve their health conditions.



### WATER AND SANITATION

- Adequate potable water supply was maintained at 21.4 liters/person/day in Mahama camp.
- Construction of sanitation facilities (two latrine blocks and urinals) at Musha repatriation stopover was at 95% of completion rate.
- UNHCR, MINEMA, Partners, and the refugee community celebrated World Water Day with the theme "Valuing Water." It was an opportunity to raise awareness on safeguarding the WASH facilities.



### SHELTER, COMMUNAL INFRASTRUCTURES, AND NFIS

- 15 semi-permanent shelters were repaired in the Mahama camp.
- 5,673 refugees in the return program received face masks.
- 6,121 mosquito nets were availed to health centers to be distributed to pregnant and lactating mothers.
- 15,197 bars of bathing soaps were distributed to refugees with exceptional protection cases in the Mahama camp, including new arrivals, students in boarding schools, UAC who turned 18 and refugee role models on International Women's Day.

- Refugees and host community students received sanitary towel packages, individually and others were provided to the schools.



### ENERGY AND ENVIRONMENT

- 47,632 refugees were provided with gas for domestic cooking energy in the Mahama camp.
- 246 refugee families in Mahama camp received gas cooking materials, including burners and regulators.



### COMMUNITY EMPOWERMENT AND SELF-RELIANCE

- 959 refugees in Mahama camp received support to expand or formalize their businesses.
- 12,451 refugees were engaged in income-generating activities.
- UNHCR, MINEMA, Partners, and the refugee community celebrated International Women's Day on 08 March 2021.

### Needs & Gaps

- 27 children with Severe Acute Malnutrition (SAM) and 112 children with Moderate Acute Malnutrition (MAM) were admitted to the nutrition program.
- Family planning prevalence was at 43% in the Mahama camp.



Regular temperature monitoring is used as part of the early identification of COVID-19 cases in Mahama camp, Kirehe @UNHCR/Eugene Sibomana

# Congolese Refugee Response

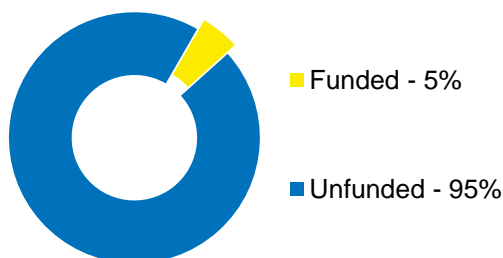


Refugees' access to adequate water is a key priority for UNHCR and partners. Mugombwa camp, Gisagara District. @UNHCR/Eugene Sibomana

## FINANCIAL REQUIREMENT

# USD 32.8 million

## FUNDING (AS OF 30 MARCH 2021)



## Achievements & Highlights



### PROTECTION

- Minister of MINEMA, Honorable Marie Solange Kayisire, visited the Nyabiheke camp on 26 March. The objective of the visit was to assess the wellbeing of the refugees through the activities implemented by the partners and meet the refugees.
- 827 Congolese refugees from 174 families relocated from high-risk zones in Kigeme to Mahama camp.
- One refugee in Gihembe camp obtained machine-readable Conventional Travel Documents issued by the Rwanda Directorate General of Immigration and Emigration (DGIE).
- 18 new cases of child protection, such as child neglect, teenager pregnancy, a child with severe medical conditions, children parents, a child in

conflict with the law, psychological/emotional abuse, and physical abuse; were identified in Mugombwa (03), Kiziba (02), Kigeme (04), Gihembe (04), and Nyabiheke (05) camps. Best interest assessments were conducted for the children to assess their situation and wellbeing and assist them accordingly.

- 46 new cases of SGBV, including rape, child defilement, sexual assault, psychological/emotional abuse, denial of resources, and physical assault, were reported in Kiziba (10), Kigeme (06), Mugombwa (12), Gihembe (07), and Nyabiheke (10) camps, and Huye Urban (01).
- 199 children in the Kiziba (43), Nyabiheke (68), Mugombwa (20), and Kigeme (68) camps were issued birth certificates by the local authorities.
- 492 refugees with specific needs, i.e., disability and mental health problem in Gihembe (233), Kiziba (104), and Nyabiheke (155) camps were assisted with assistive devices for people with disabilities, rehabilitation services for children, palliative cares, psychotherapy sessions, supplementary feeding and specialized medical assistance, including eye treatment.
- UNHCR, WFP, and partners held discussions with the refugees in the camps on the eligibility criteria to be considered for the Targeted Assistance program.



### DURABLE SOLUTIONS

- 103 refugees departed for resettlement in March 2021 and 109 since January 2021.
- 27 cases of 121 individuals were submitted to resettlement countries in March 2021, and 90 cases of 322 individuals since January 2021.



### EDUCATION

- 48 refugee students in Gihembe (24) and Nyabiheke (24) camps were selected for the Impact Hope scholarships to study in the school of excellence at the secondary education level.
- The school attendance rate was at the average of 96% in primary and secondary.
- GIZ Civil Peace Service (ZFD) granted 10 full-ride scholarships to five refugees from the Mugombwa (3) and Kigeme (2) camps and five individuals from host communities for Peace and Conflict Studies (BA) at the Institute of Arts and Social Science (PIASS) in Huye District.





## HEALTH

- The Director of Byumba District hospital visited Gihembe Health Center on 10 March 2021. He was presented the general overview of the services provided to the refugees and host community within the camp. The visit was used to strengthen the existing partnership between Byumba District hospital, UNHCR, MINEMA, and Alight (health partner).
- Crude and under 5 mortality rates were 0.07 and 0.46 deaths/1,000/month, respectively.
- 13,574 refugees and the host community accessed primary health care services in the camps.
- 471 refugees and the host community were referred for secondary and tertiary health services.
- 692 refugees with HIV/AIDS received antiretroviral treatment, nutritional and psychosocial support.
- 69,065 male condoms were distributed as a preventive measure of new cases of HIV/AIDS, STIs, and unwanted pregnancies.
- 145 newborn babies were delivered in the camps, with 99% attended to by trained health professionals.
- 6,122 women of reproductive age attended family planning services.



## FOOD SECURITY AND NUTRITION

- 76,884 refugees in the camps received the monthly cash for food from WFP.
- WFP started the 60% cut of cash for food assistance to refugees in camps.
- 541 children aged 6-23 months, 406 pregnant and lactating women, 107 persons with HIV in Kiziba camp, and the host community received supplementary feeding assistance.



## WATER AND SANITATION

- Supply of potable water maintained in Kiziba, Gihembe, Kigeme, and Mugombwa camps at 25.8 liters, 17.9 liters, 17 liters, and 25 liters per person per day, respectively.

- Construction of new communal shower blocks in Gihembe (23) and Nyabiheke (25) camps was completed.
- Construction of new communal shower blocks in Mugombwa (96 stances) and Kigeme (144 stances) was at a 97% completion rate.
- 2,451 liters of soaps were distributed in all public handwashing stations in Kiziba (80 liters), Gihembe (476 liters), Nyabiheke (75 liters), Mugombwa (620 liters), and Kigeme (1,200 liters) camps to ensure proper hygiene.



## SHELTER, COMMUNAL INFRASTRUCTURES, AND NFIS

- Construction of a Child-Friendly Space (CFS), community center, Early Childhood Development (ECD) in Kiziba camp was completed.
- Rehabilitation of multipurpose playgrounds in Kiziba camp was at a 70% completion rate.
- Construction of 88 new shelters to relocate families in high-risk environmental areas in Kiziba camp was at a 19% completion rate.
- 107 refugee shelters' roofs were transformed from plastic sheeting to iron sheets in Nyabiheke (107), Kigeme (10), and Mugombwa (07) camps.



## ENERGY AND ENVIRONMENT

- 76,884 refugees in the camps received the monthly cash for energy.
- 31,041 fruit trees were planted in Kiziba camp through community work.



## COMMUNITY EMPOWERMENT AND SELF-RELIANCE

- Youth Volunteers continue to play an important role in sensitizing and mobilizing actions to prevent COVID-19 in all camps and urban areas.
- International Women's day was celebrated in all locations. Key messages were communicated, and women taking different leadership roles in the community were recognized as role models. The women entrepreneurs, women leaders, and students were recognized for their initiative to be at the forefront of leadership, contribution, and

promotion of gender equality and refugee rights as role models.

- Community centers in both camps and urban areas are continuously supported with internet and digital device and equipment to encourage the community, especially youths, to lead and be engaged in various activities provided at the community centers.
- Young Sports Facilitator (YSF) Course kicked off in all camps for refugees and host community youths who want to gain skills to lead and manage sports activities to enhance the protection of young people. YSF course is led by qualified refugee on-site facilitators who are expected to play key roles in leading the course to success.
- Construction and rehabilitation of eight multipurpose playgrounds in camps and schools in proximity to camps have been ongoing. Some are in the phase of completion. Playgrounds will provide space to engage more young people and increase the protection capacity by enhanced awareness-raising campaigns and engaging them in recreational activities.
- A pilot Coding Class in Kiziba camp was completed. The course was conducted by a Rwandan tech company and was attended by 12 refugees (6 males and 6 females). The participants have gained the ability to devise technological solutions to issues in camps and the community. This opportunity also led youths to take the initiative to set up their own business or develop an application to be used in the refugee camp in real life.
- INKOMOKO trained 601 refugee entrepreneurs in Kigeme (281) and Mugombwa (320) camps on the Business Model Canvas, including identification of clients, customer care, and financial management.
- 200 families were identified in the Kiziba camp for the joint UNHCR/WFP Join Graduation Project in 2021.
- Selected vulnerable groups of women and the women committee in the Kiziba camp were trained on income-generating activities, including starting a business. The groups received small funds to start businesses.
- The Jyambere project, funded by World Bank and implemented by MINEMA, was introduced to the refugee committee of Nyabiheke camp and the host community authorities. The objective of the project is to improve access to basic services and economic opportunities for

the communities and support environmental protection in targeted areas in Rwanda.

- 44 small-scale entrepreneurs from Gihembe camp received financial literacy training at Kageyo TVET school. The training materials included financial education, entrepreneurship, business development plan, and financial management. Kageyo TVET school will continue a follow-up with the trainees with on-site coaching and mentorship for 20 days.
- INKOMOKO trained 2,827 refugees in Gihembe (1,750) and Nyabiheke (1,077) camps and the host community on financial literacy. The participants included 1,276 entrepreneurs with existing businesses and 1,158 yet to start a business.
- A farmers' group in Nyabiheke camp, supported by the Food for Hungry, harvested 7,343 Kg of maize on 2 hectares of land. 60% of the harvest is for consumption, and the other part was taken to the market.

### Needs & Gaps

- Limited support for children with specific needs. Six children out of 21 are supported to attend specialized schools in Nyabiheke camp.
- Family planning prevalence was at 32% in the camps.
- Water shortage remains a problem in Nyabiheke camp (11.2 liters/person/day) due to the limited capacity of the water borehole.
- Environmental degradation continues to impact shelter and infrastructure in the camps.



*Supporting women associations are part of the protection and socio-economic plan. Mugombwa camp, Gisagara District.*

## Emergency Transit Mechanism (ETM)

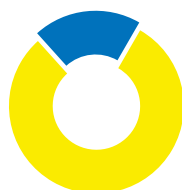


The arrival of Eritreans, Somalis, Sudanese, and Ethiopians from Libya to Rwanda. ©UNHCR/Eugene Sibomana

### FINANCIAL REQUIREMENT

## USD 12.5 million

FUNDING (AS OF 30 MARCH 2021)



■ Funded - 80%

■ Unfunded - 20%

## Achievements & Highlights



### PROTECTION

- ETM Gashora hosted 281 refugees and asylum seekers evacuated from Libya: 151 Eritreans, 93 Sudanese, 42 Somalis, four Ethiopians, and two Nigerians.



### EDUCATION

- 69 refugees participated in Information and Communication Technology (ICT) training classes.
- 214 refugees participated in language classes of French, English, and Kinyarwanda. They are in different categories: beginner, lower intermediate, and advanced intermediate.



### HEALTH AND NUTRITION

- 420 medical consultations were recorded of refugees accessing primary healthcare services from the Health Post in the Centre.

- 78 cases were referred for secondary and tertiary health care services.
- 40 persons with mental health problems received psychosocial support through individual psychotherapy/counseling sessions.
- 720 male condoms were distributed in the Center as part of the HIV/AIDs and unwanted pregnancies prevention.
- 26 persons with specific needs, including under 2 children, lactating mothers, pregnant women, and Tuberculosis patients, were provided with supplementary food assistance.
- 224 refugees and asylum seekers and 113 humanitarian workers in the Center were vaccinated for COVID-19.
- Health partner, AHA, conducted 14 tests of COVID-19 for refugees in the Center, and all were negative.



### FOOD SECURITY AND COOKING ENERGY

- All the refugees were provided with three hot meals a day.



### WATER, SANITATION, AND HYGIENE

- The average adequate potable water supplied was at 87 liters/person/daily.



### SHELTER AND NFIS

- The construction of the accommodation and office blocks in the Center was at 70% and 85% completion rates, respectively.
- Families with under 2 children received baby diapers (12 packages) and baby wipes (28 packages).
- 107 individuals received clothes, five pieces each from the Inditex in-kind donation.
- Women of reproductive age received sanitary pads (82 packages).



### COMMUNITY EMPOWERMENT AND SELF-RELIANCE

- Two refugees are engaged in airtime/credit selling activities with network operating companies.

- 28 refugees in the Center participated in the entrepreneurship and business training.
- The refugees, UNHCR, MINEMA, and partners in the Center celebrated International Women Day. Women showcased their cultural and traditional cooking recipes. They also showed interest in taking up leadership roles in the community.
- Preparation of the refugee representatives' election in the Center started with meeting the existing community volunteers. The meeting discussed the importance of community leaders and their role in supporting the community.



### CASE PROCESSING FOR SOLUTIONS

- 22 refugees departed for resettlement in March 2021 and 34 since January 2021.
- 62 cases of 69 individuals were submitted to resettlement countries in March 2021 and 137 since January 2021.
- From the 515 persons evacuated from Libya, 434 files (84%) have been submitted for durable solutions, and 237 individuals have departed to resettlement countries.

### Needs & Gaps

- Pending completion of accommodation building to increase the capacity of the transit center.
- The need for a child-friendly space as the number of children has increased.
- Need of indoor sports facility preferred by females.



Evacuees from Libya go through mandatory COVID-19 testing at Kigali International Airport. @UNHCR/Eugene Sibomana

## Return and Reintegration

### Achievements & Highlights

- 113 Rwandan returnees were received in Kijote Transit Center, Rubavu District, Western Province, from DRC. 278 were received since January 2021.
- 152 returnees from the previous convoy received return cash grants (20%), health insurance, three months food package, and facemasks before departing to their areas of origin.

### Needs & Gaps

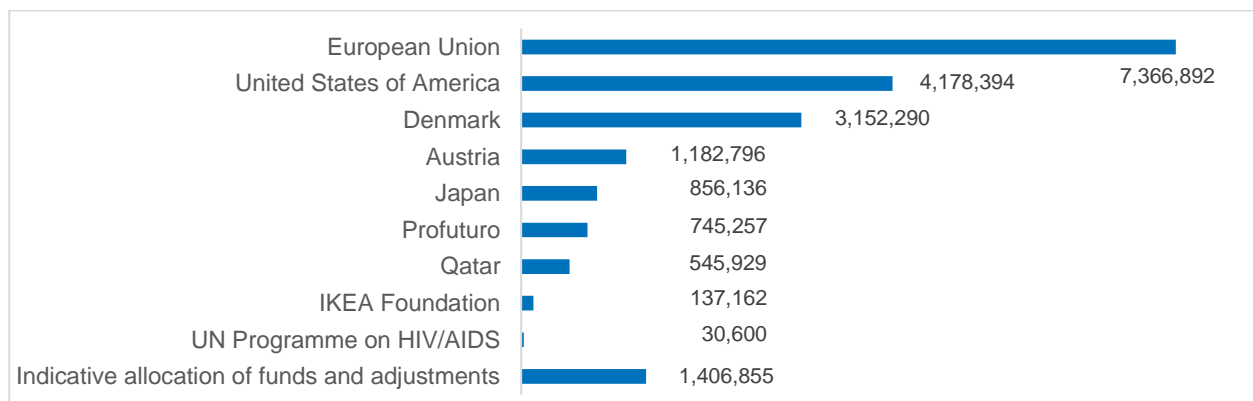
- Delayed provision of ID cards for returnees received in Rwanda since 2019. This has impacted their access to reintegration grants, livelihood opportunities as well as health services.



## Financial Information

UNHCR is grateful for the support provided by donors to this operation and those who have contributed to UNHCR programs with unearmarked and broadly earmarked funds.

### Funding received USD 18,195,456



### Other softly earmarked contributions | USD

**United States of America** 12.2 million | **Germany** 5 million

Malta | Private donors

### Unearmarked contributions | USD

**Norway** 80 million | **Sweden** 66.9 million | **Netherlands** 36.1 million | **Denmark** 34.6 million | **Germany** 22.1 million | **Switzerland** 16.4 million | **Private donors** 13.3 million | **Ireland** 12.5 million | **Belgium** 11.9 million

Algeria | Armenia | Australia | Bulgaria | Canada | Costa Rica | Estonia | Finland | Iceland | Liechtenstein | Luxembourg | Malta | Monaco | Montenegro | New Zealand | Portugal | Republic of Korea | Saudi Arabia | Singapore | Thailand | Turkey | Uruguay | Private donors

For more information: <http://reporting.unhcr.org>

#### Contacts:

Elise Villechalane, External Relations Officer, [vilecha@unhcr.org](mailto:vilecha@unhcr.org), Cell +250 (0) 78-831-5198

Protogene Ndwaniye, Assistant Reporting Officer, [ndwaniye@unhcr.org](mailto:ndwaniye@unhcr.org), Cell: +250 (0) 78-324-2477

**Statistics:** <http://data2.unhcr.org/en/situations/burundi> **UNHCR Rwanda:** [www.unhcr.org/rw](http://www.unhcr.org/rw) **Twitter:** @RefugeesRwanda