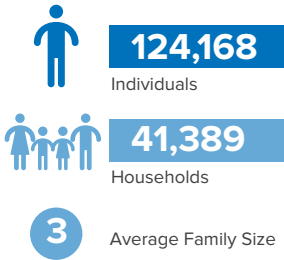


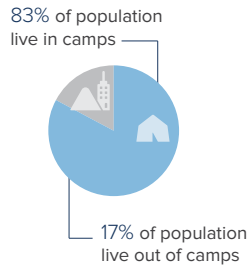
# Eritrean Refugees Overview in Sudan

as of 30 April 2021

## Eritrean Refugees and Asylum-seekers



## Population Distribution



## Persons With Disabilities



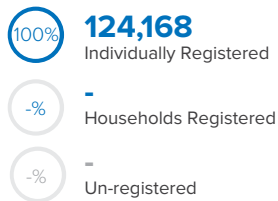
## Unaccompanied and Separated Children<sup>1</sup>



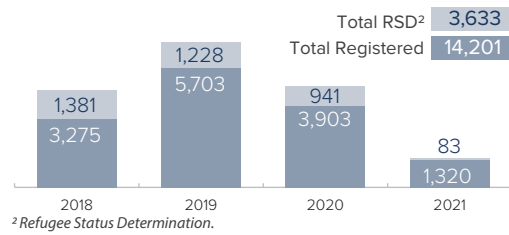
UNHCR continues to receive new arrivals in East Sudan, largely from Eritrea. The Commission of Refugees (CoR) receives and assists asylum-seekers at the border where they are temporarily hosted in reception centres.

Within 1-2 weeks they are transported to Shagarab camps where they undergo screening, registration, and Refugee Status Determination (RSD) while receiving life-saving services and shelter.

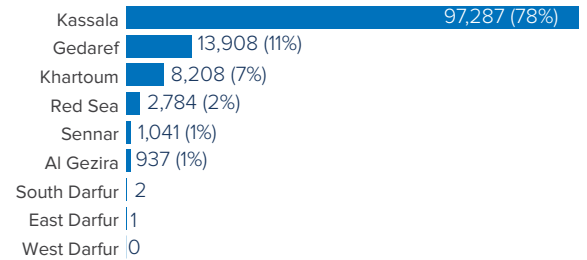
## Registration Status



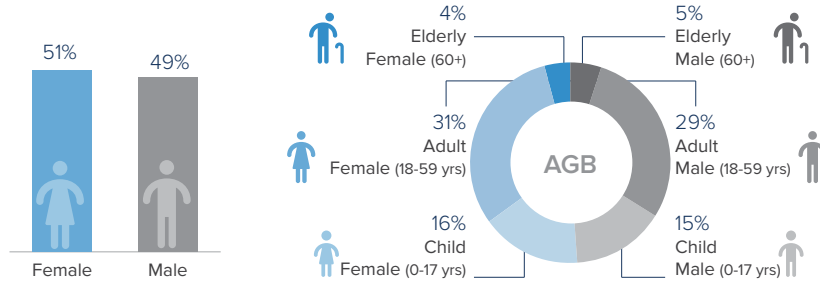
## Registration Statistics Since 2018



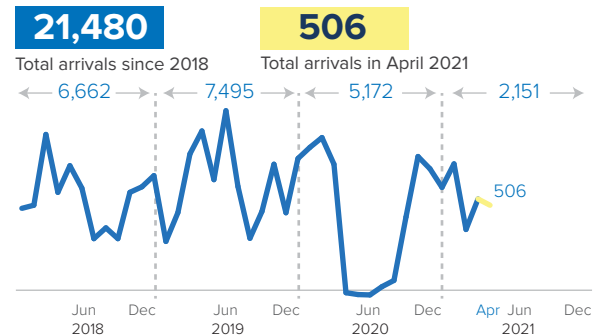
## Eritrean Refugees and Asylum-seekers Per State



## Age-gender Breakdown<sup>3</sup>

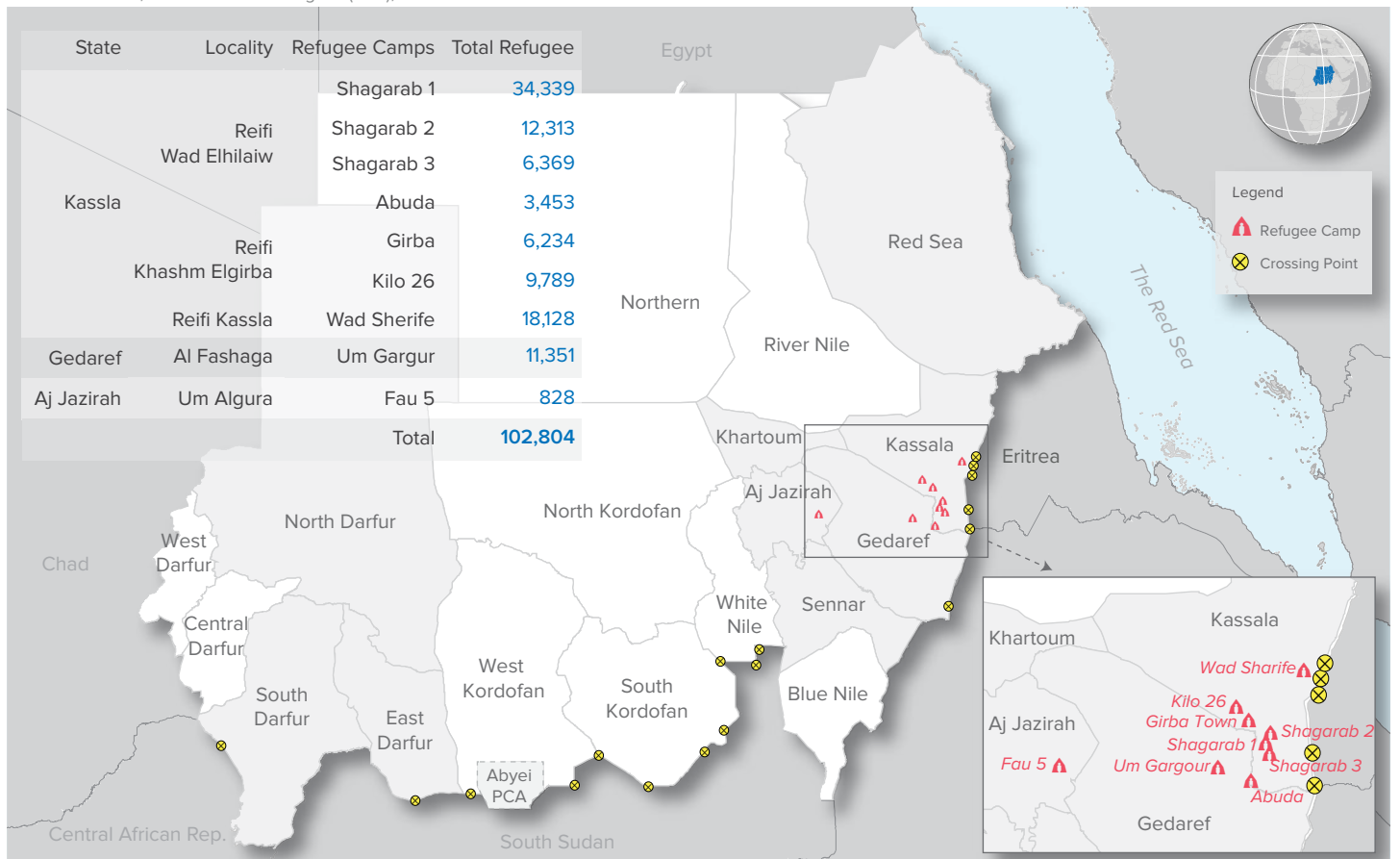


## New Arrivals Trends (2018 - 2021)



<sup>3</sup> Population distribution statistics are based on registered individuals only.

Sources: UNHCR, Commission of Refugees (CoR), UNICEF



The boundaries and names shown and the designations used on this map do not imply official endorsement or acceptance by the United Nations. Abyei region: Final status of the Abyei area is not yet determined.

