



# Performance Snapshot

Quarter 1

Uganda Refugee Response Plan (RRP) 2020-2021

January - March 2021



**71,554**  
Refugees & Asylum Seekers  
**10,506 HHs**

**Kiryandongo Refugee Settlement**  
**Arua Sub-Office**



**20**  
Partners

Sector	Actual status per key indicator	Target/Standard (2021)	Actual  against annual target  or standard
 Education	68% Children of School going age enrolled in Primary School ( <i>Term I 2020</i> )	100%	68%  32%
	The Pupil Teacher ratio for Primary School was 1:68 ( <i>Term I 2020</i> )	1:71	Actual  Target
 Environment & Energy	0 Households received alternative and/or renewable energy ( <i>Q1</i> )	14,020 ( <i>target</i> ) 1/HH ( <i>standard</i> )	0%
	0 hectares of forests, wetlands, riverbanks and lakeshores protected and restored ( <i>Q1</i> )	1,406 ha	0%
 Food Security	69,608 Refugees received monthly cash for food and in-kind assistance ( <i>73% cash and 24% food</i> ) ( <i>In Q1</i> )	71,554 Individuals	Cash  In-kind
	38.5% of HH with borderline Food Consumption Score ( <i>In Q1</i> )	18% ( <i>original 2020 target</i> ) <20% ( <i>standard</i> )	
 Health & Nutrition	The severe Acute Malnutrition recovery rate was 92.7% ( <i>In Q1</i> )	75% ( <i>target</i> ) > 75% ( <i>standard</i> )	Actual  Target/standard
	The under-five mortality rate was 0.03 per 1,000 children ( <i>In Q1</i> )	0.1 ( <i>target</i> ) < 1.5 ( <i>standard</i> )	Actual  Target/standard
 Livelihoods & Resilience	0 Refugee households received emergency livelihood support ( <i>Q1</i> )	1,756 HHs	0%
	0 Refugees received financial literacy training ( <i>Q1</i> )	2,000 Individuals	0%
 Child Protection	44 Children received individual case management services ( <i>Q1</i> )	1,966 Individuals	2%
	44 GBV Survivors received appropriate multi-sectoral support ( <i>Q1</i> )	112 Individuals	39%
 Protection	779 Refugees received psychosocial support ( <i>Q1</i> )	8,000 Individuals	10%
	551 Refugees received legal assistance and legal aid services ( <i>Q1</i> )	10,000 Individuals	6%
 Shelter, Settlement & NFI	0 Refugee households with specific needs assisted with semi-permanent shelter ( <i>Q1</i> )	250 HHs	0%
	0 kms of roads rehabilitated (including roadside vegetation) for all-year access to community services ( <i>Q1</i> )	9 Kms	0%
 Water, Sanitation & Hygiene	Refugees received 14.5 litres per person per day ( <i>In Q1</i> )	20 liters ( <i>target</i> ) 20 liters ( <i>standard</i> )	Actual  Target/standard
	82% of Refugee households had access to latrine ( <i>In Q1</i> )	85% ( <i>target</i> ) ≥ 85% ( <i>standard</i> )	Actual  Target/standard
 Cash-Based Interventions	0 Households received any form of cash and voucher assistance ( <i>including CBI for WASH, L&amp;R and EE</i> ) ( <i>Q1</i> )	10,000 HHs	0%
	0 Households assisted with cash and voucher for basic needs ( <i>Including multipurpose cash</i> ) ( <i>Q1</i> )	10,000 HHs	0%



# Operational Presence

Quarter 1

## Kiryandongo Refugee Settlement

January - March 2021



**01**  
National  
Partners



**11**  
International  
NGOs



**06**  
UN  
Agencies



**02**  
Government  
Partners



Partner/Sector	Education	E&E	Food Security	Health & Nutrition	Livelihood	Protection	CP	GBV	SSNFI	WASH	CBI
ACF				OP							
AFI			IP								
AIRD									IP		
C-TEN						IP					
DCA		IP									
DRC						IP	IP	IP		OP	
IRC				IP							
KDLG				G							
OPM						G	G	G	G		
RMF				OP							
SCI							IP				
SHA					OP						
TPO						IP					
UNFPA				A							
UNHCR	A	A		A	A	A	A	A	A	A	
UNICEF				A			A				
WFP			A	A							
WHO				A							
WIU	IP										
WMU										IP	
<b>Total #</b>	<b>02</b>	<b>02</b>	<b>02</b>	<b>09</b>	<b>02</b>	<b>05</b>	<b>05</b>	<b>03</b>	<b>03</b>	<b>03</b>	<b>00</b>

A = United Nations (UN) Agency

GP = Government Partner

IP = UN Implementing Partner

OP = Operational Partner

Action Against Hunger (ACF)

Kiryandongo District Local Government

United Nations High Commissioner for

Andre Foods International (AFI)

(KDLG)

Refugees (UNHCR)

African Initiatives for Relief and Development

Office of the Prime Minister (OPM)

United Nations International Children's

(AIRD)

Real Medical Foundation (RMF)

Emergency Fund (UNICEF)

Community Technology Empowerment

Self Help Africa (SHA)

World Food Programme (WFP)

Network-Uganda (CTEN-Uganda)

Save the Children International (SCI)

World Health Organization (WHO)

DanChurch Aid (DCA)

Transcultural Psychosocial Organization

Windle International Uganda (WIU)

Danish Refugee Council (DRC)

(TPO)

Water Mission Uganda (WMU)

International Rescue Committee (IRC)

United Nations Population Fund (UNFPA)

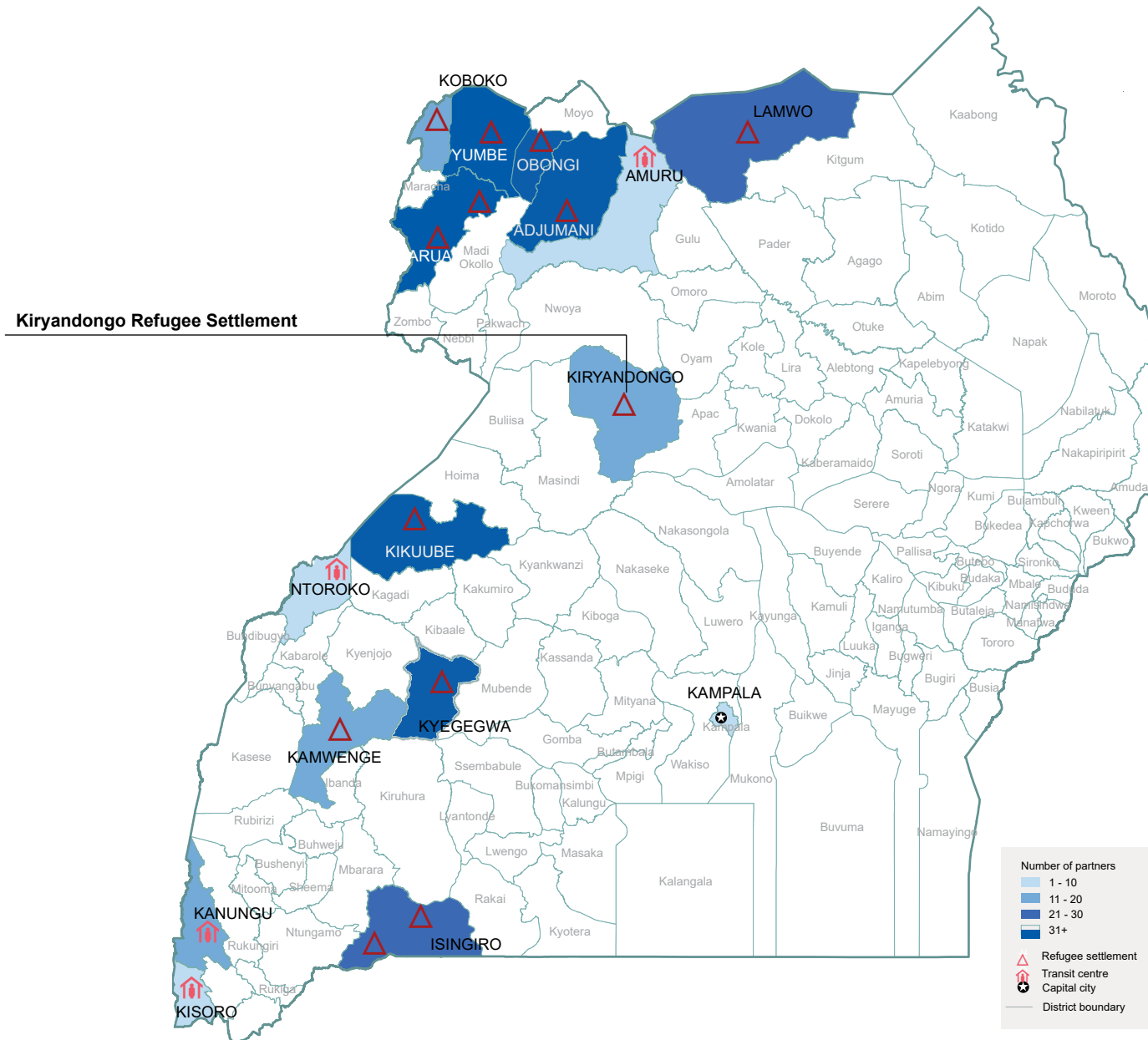


# Operational Presence

Quarter 1

## Map of Uganda Showing Location of Settlements and number of partners

January - March 2021



The boundaries and names shown and the designations on this map do not imply official endorsement or acceptance by the United Nations