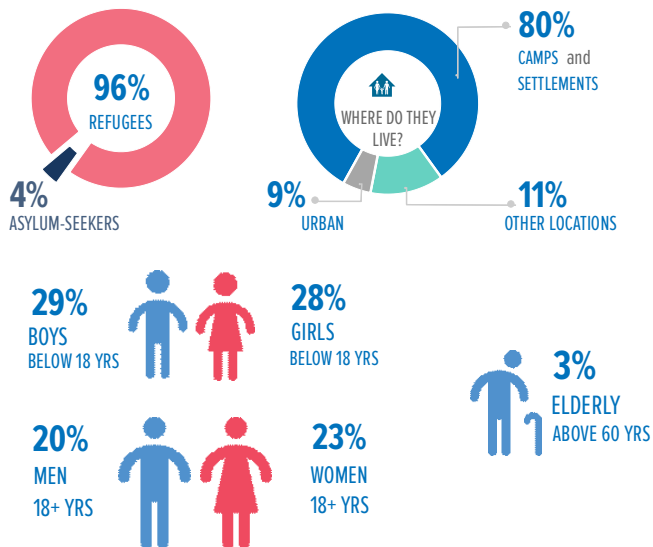
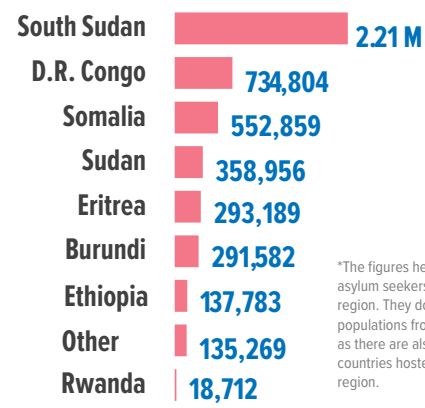


4.76 MILLION
REFUGEES AND ASYLUM-SEEKERS

KEY STATISTICS



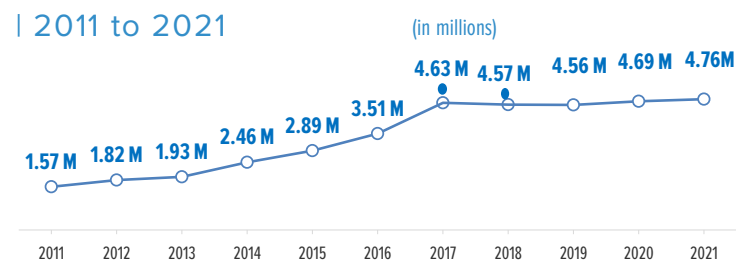
*TOTALS BY COUNTRY OF ORIGIN



*The figures here refer to refugees and asylum seekers hosted within the EHAGL region. They do not include total refugee populations from these countries of origin, as there are also refugees from these countries hosted beyond the EHAGL region.

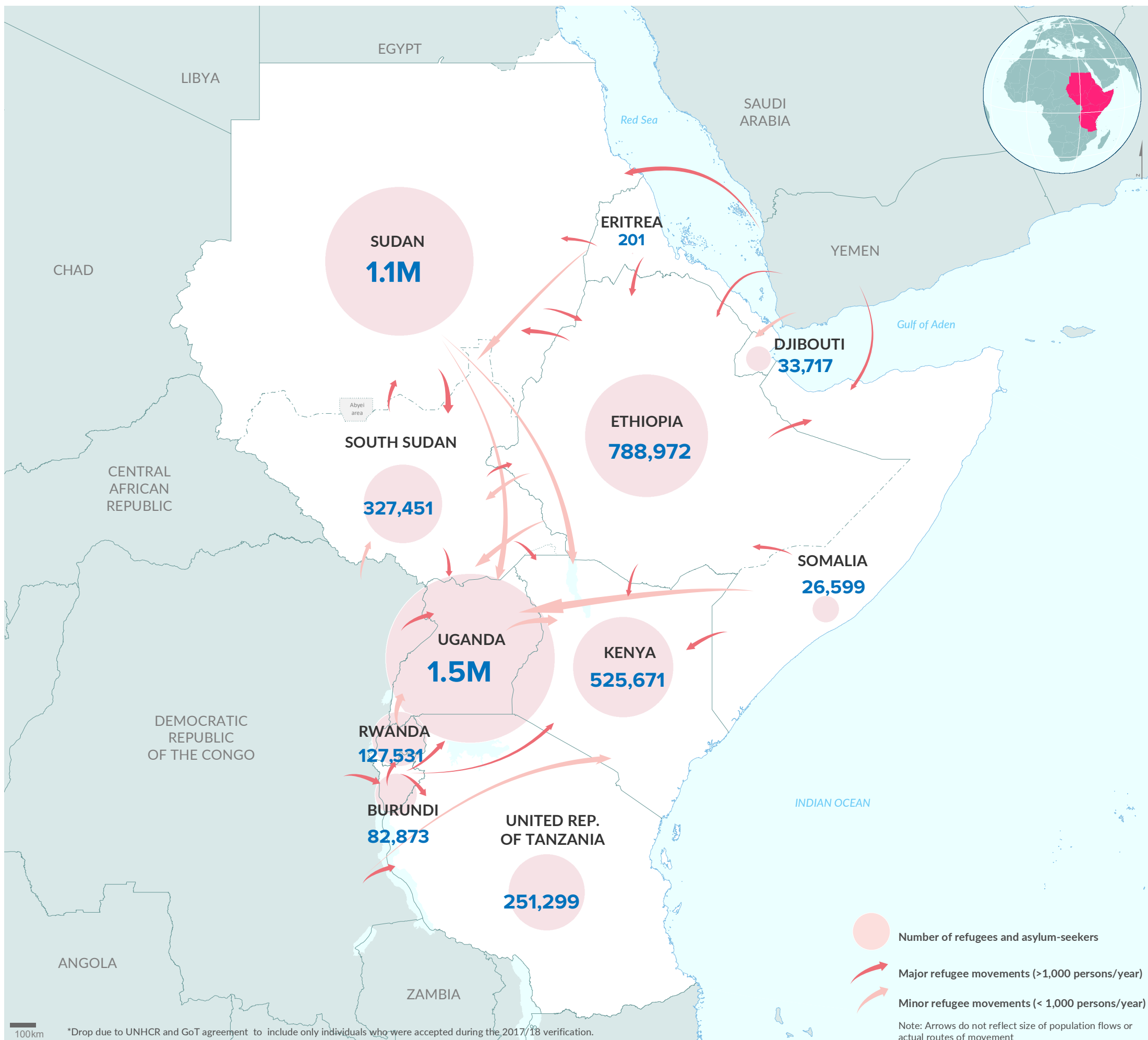
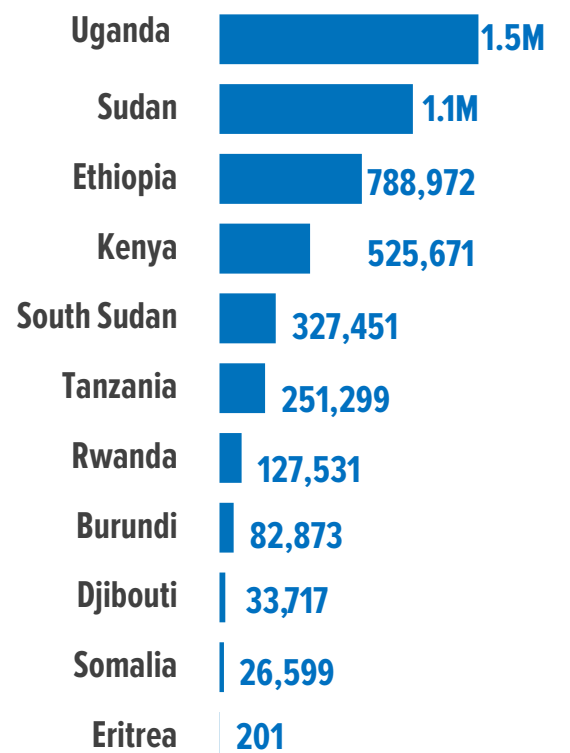
ANNUAL TREND OF DISPLACEMENT

| 2011 to 2021



* The decrease in population in 2018/2019 is attributed to the completion of a countrywide population verification exercise in Uganda and Ethiopia; as well as spontaneous refugee returns to Burundi and South Sudan.

TOTALS BY HOST COUNTRY



The boundaries and names shown and the designations used on this map do not imply official endorsement or acceptance by the United Nations. Final boundaries between the Republic of Sudan and the Republic of South Sudan and Somalia and Ethiopia has not yet been determined. Final status of the Abyei area is not yet determined.

Creation date: 20 Aug 2021 Sources: Geographic data: UNCS. Population statistics: UNHCR Monthly Statistical Reports 31 July 2021 or latest available, should be considered provisional and subject to change. Author: UNHCR Regional Bureau for East, Statistics Horn of Africa and the Great Lakes Feedback: kenrsgis@unhcr.org