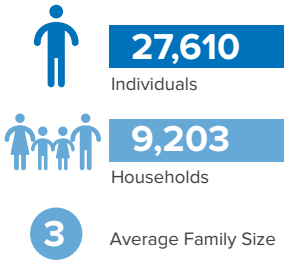


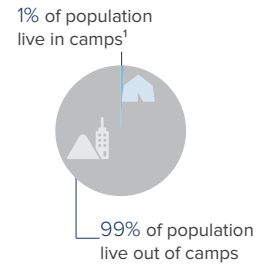
Central African Republic Refugees in Sudan

as of 30 November 2021

CAR Refugees and Asylum-seekers



Population Distribution



¹ Um Shalaya camp in Azum/ Central Darfur

Persons With Disabilities



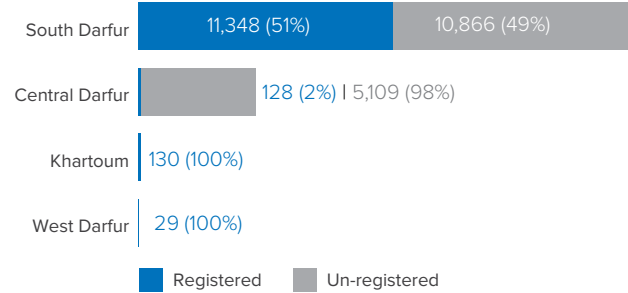
Unaccompanied and Separated Children



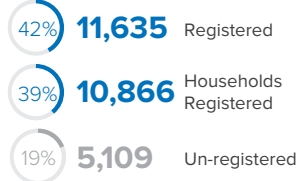
The spark of inter-communal violence in September 2019 have led refugees from Central African Republic (CAR) to flee to safety in Sudan.

With more than 10,000 refugees arriving in 2020 and the situation along the CAR-Sudan border remaining tense and volatile, UNHCR has revised its planning figure for arrivals from CAR to 10,000 individuals by end of 2021.

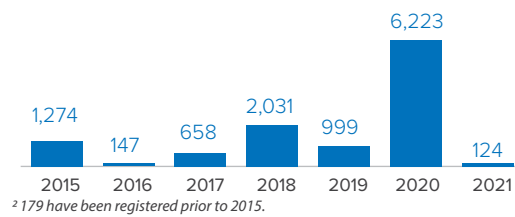
CAR Refugees and Asylum-seekers Per State



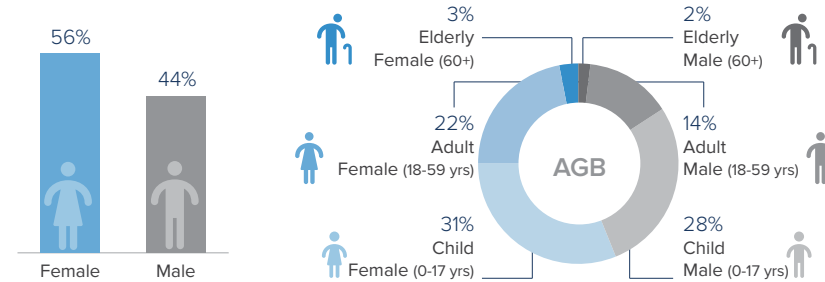
Registration Status



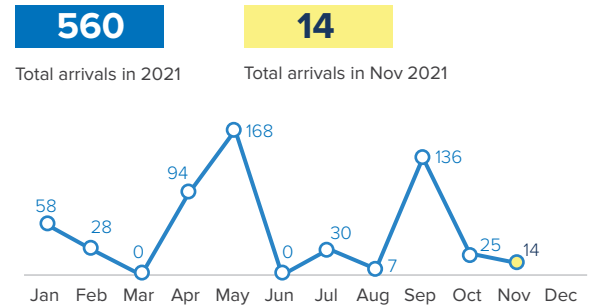
Registration Since 2015²



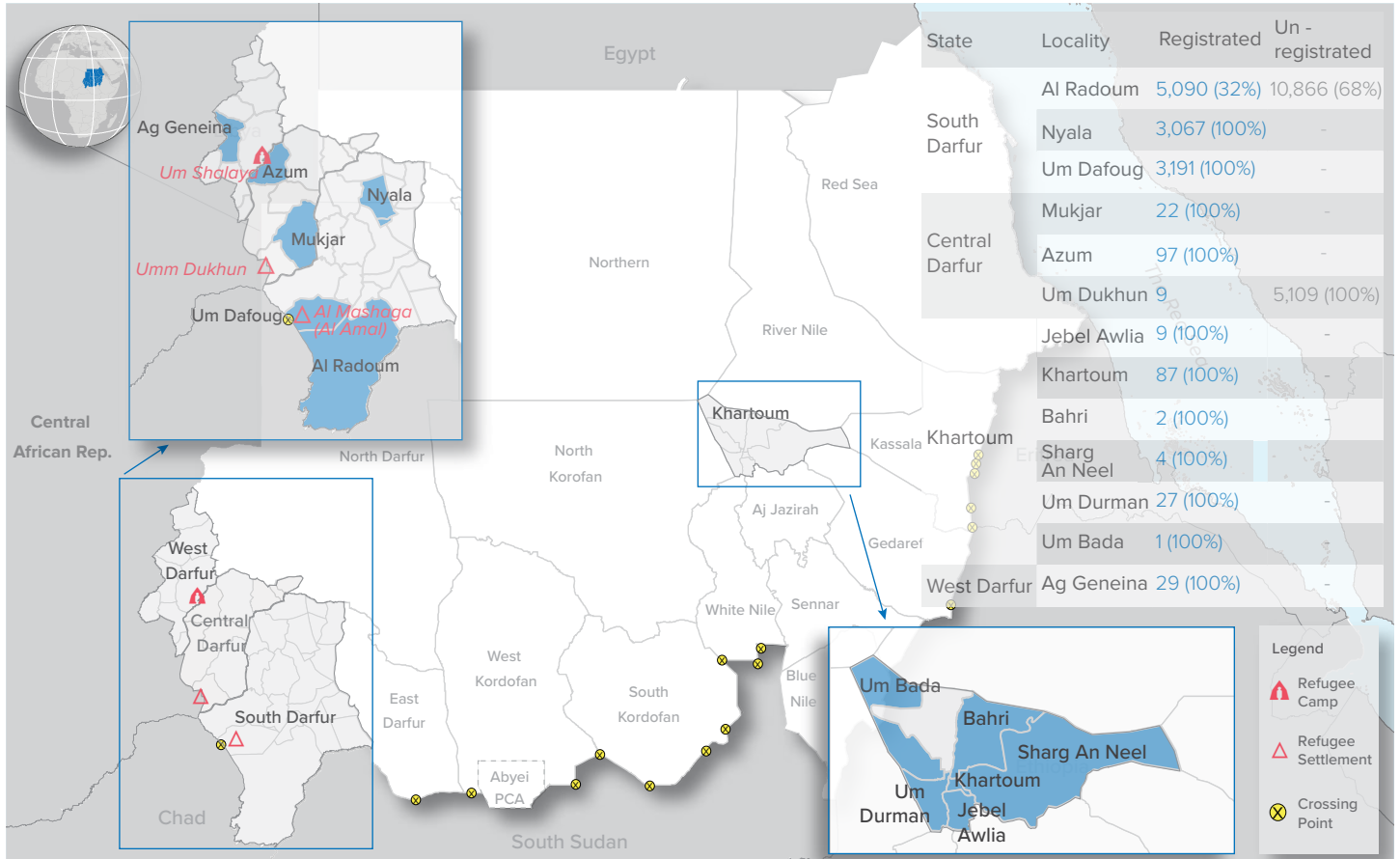
Age-gender Breakdown³



New Arrivals | 2021



Sources: UNHCR, Commission of Refugees (CoR)



The boundaries and names shown and the designations used on this map do not imply official endorsement or acceptance by the United Nations. Abyei region: Final status of the Abyei area is not yet determined.

This document and further information are available on UNHCR Sudan data-portal, please click on the link <https://data2.unhcr.org/en/country/sdn>, or scan the QR code. For Feedback Contact: UNHCR - Sudan, Information Management Unit, SUDKHM@unhcr.org

