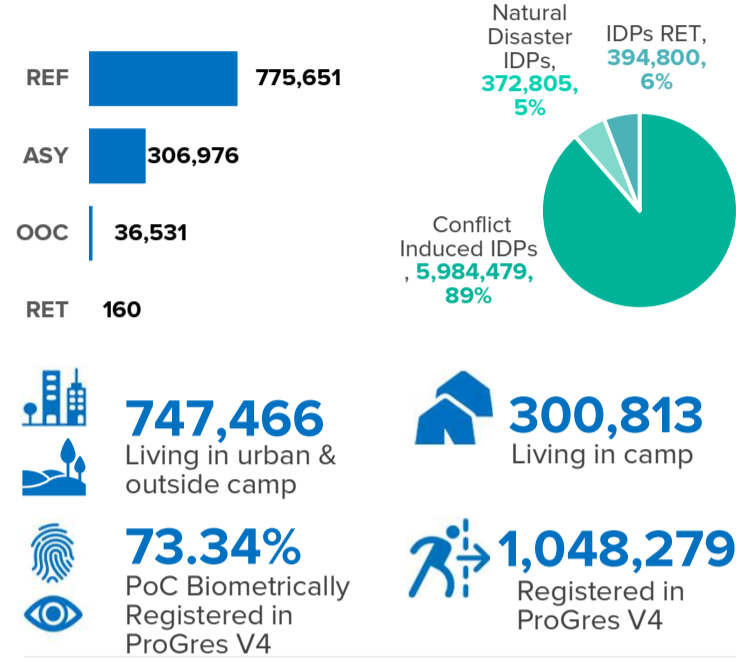
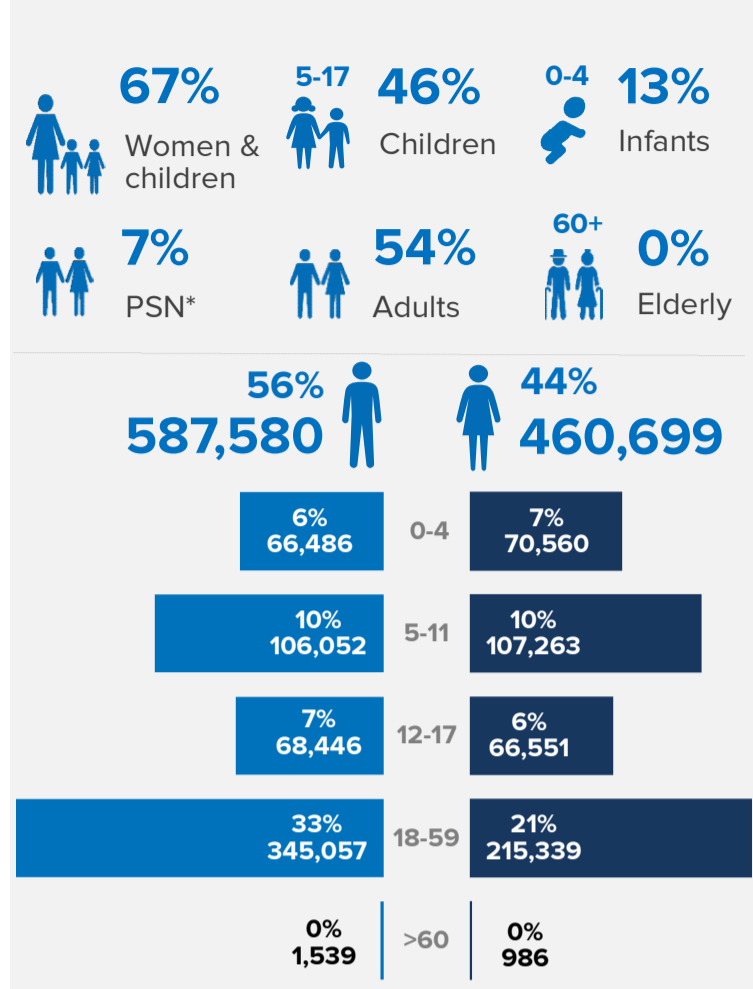


KEY FIGURES



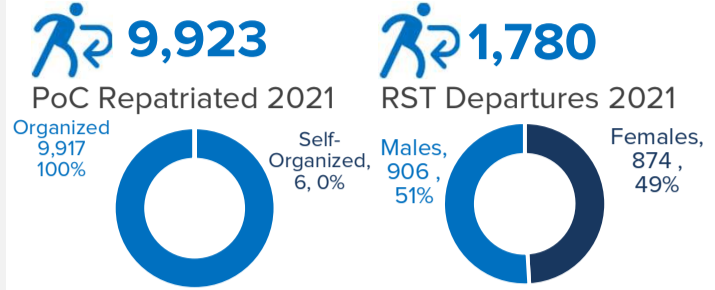
AGE & GENDER* (POC registered in ProGres V4)



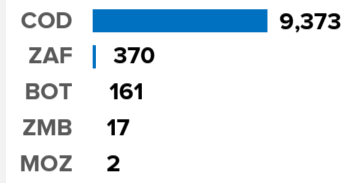
CONTEXT

RBSA Population Statistics are compiled monthly using data from ProgresV3/V4 and external government datasets. External data are statistics as of 30 September 2021 for IDP, IDP Returnees, Repatriation, Returnees, NIS data from South Africa and Self Settled from Angola, Zambia, DRC and Zimbabwe which is using Progres V3 data.

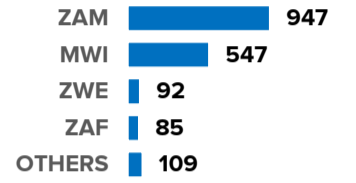
DURABLE SOLUTIONS



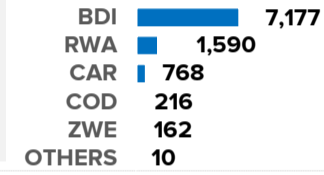
COUNTRIES OF ASYLUM 2021



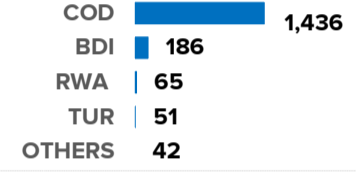
DEPARTURES BY COUNTRIES OF ASYLUM



COUNTRIES OF RETURN 2021

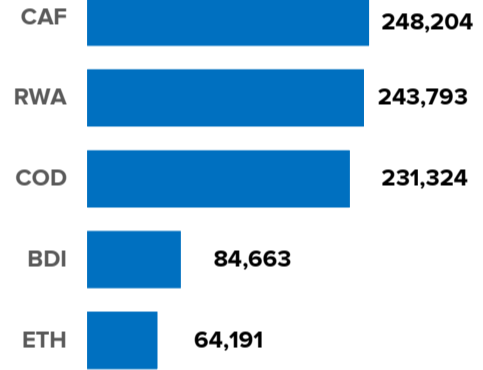


RESETTLED INDIVIDUALS COO

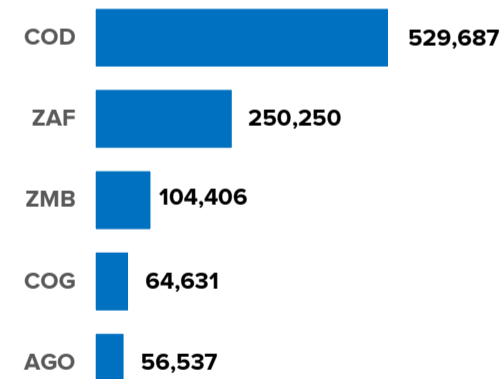


REF, ASY, OOC**

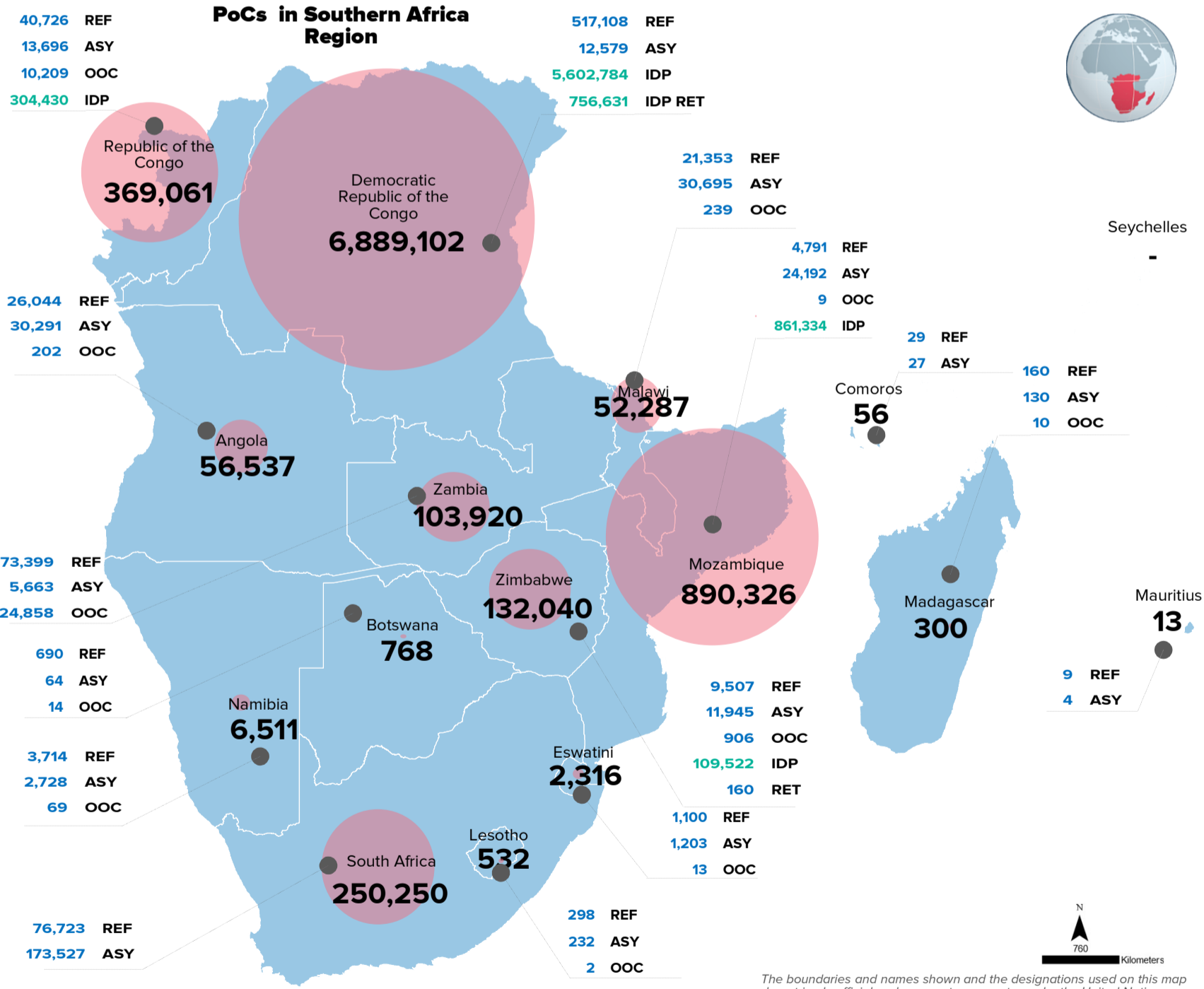
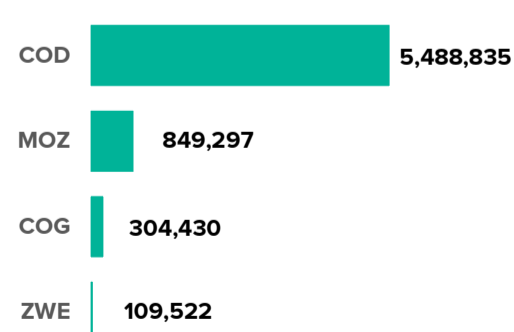
COUNTRIES OF ORIGIN (TOP 5)



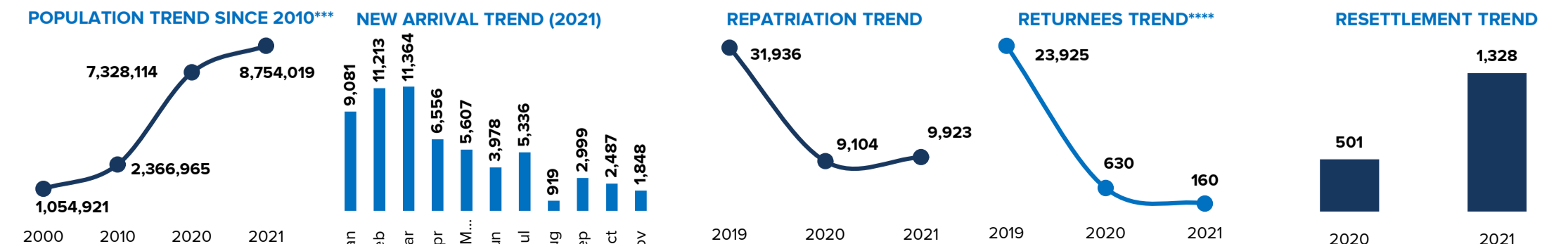
COUNTRIES OF ASYLUM (TOP 5)



COUNTRIES WITH IDPS



TRENDS



* Includes dis-aggregation for South Africa with 63% males aged 18 - 59 which changes previous averages. **Age cohort percentage has been rounded off to the whole number
REF=Refugees, ASY= Asylum-seekers, OOC= Others of concern *Figure without returnees ****IDP figures not included
Data sources: Government, IOM, UNHCR
For more information or to contribute, UNHCR RBSA DIMA (rsarbdima@unhcr.org)