

UNHCR Rwanda - Monthly Population Statistics

as of 31 December 2021

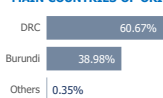


KEY POPULATION STATISTICS



127,112	Total Population
126,271	Individually Registered
841	Pre-Registered (In Reception centres/ urban)
1	New Arrivals in December 2021 (Burundians)
34,486	Total number of Households

MAIN COUNTRIES OF ORIGIN



MONTHLY POPULATION TRENDS | Jan 2021 - Dec 2021



DISTRIBUTION OF POPULATION BY LOCATION TYPE

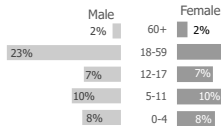
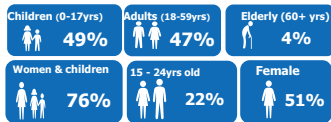


MONTHLY TREND OF NEW ARRIVALS



Location	Group Registered	Individually Registered	Total Households
Kigeme	-	15,958	3,025
Kiziba	-	16,753	3,241
Nyabiheke	-	14,156	2,671
Mugombwa	-	11,145	2,277
Kigali	764	9,077	5,636
Nyamata	37	2,262	1,280
Gashora (ETM*)	-	371	326
Nyanza RC	1	-	1
Kijote TC	2	-	2
Gatore RC	-	-	-
Huye	37	805	441
Mahama	-	55,744	15,586
Total	841	126,271	34,486

DEMOGRAPHICS

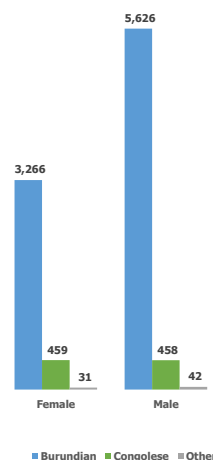


Age (year)	0-4	5-11	12-17	18-59	60+	Total	Percentage
Female	9,687	12,074	9,160	30,590	2,683	64,194	51%
Male	9,704	12,332	9,313	28,613	2,115	62,077	49%
Total	19,391	24,406	18,473	59,203	4,798	126,271	
	15.4%	19.3%	14.6%	46.9%	3.8%		Average family size 3.7

COUNTRIES OF ORIGIN

Country of Origin	0 - 4 years		5 - 11 years		12 - 17 years		18 - 59 years		60+ years		Total
	F	M	F	M	F	M	F	M	F	M	
Afghanistan	-	-	-	-	-	-	1	1	-	-	2
Angola	1	-	2	-	-	-	4	1	1	-	9
Burundi**	4,103	4,085	4,239	4,440	2,704	2,834	10,409	14,579	691	621	48,705
Chad*	-	-	-	-	-	1	1	4	-	-	6
Central Africa	-	-	-	-	-	-	-	1	-	-	1
Cameroon*	-	-	1	-	1	1	2	3	-	-	8
DR Congo	5,571	5,606	7,823	7,887	6,440	6,447	20,116	13,745	1,991	1,490	77,116
Eritrea*	7	9	3	2	13	12	32	161	-	-	239
Ethiopia*	-	-	-	-	-	1	3	3	-	1	8
Guinea	-	-	-	-	-	-	-	1	-	-	1
Haiti	-	-	-	1	-	-	-	-	-	-	1
Kenya	-	-	-	-	-	-	-	1	-	-	1
Nigeria*	-	-	-	-	-	-	-	-	-	-	0
Palestine	-	-	-	-	-	-	-	-	-	-	0
Somalia*	2	1	2	1	-	4	4	9	-	1	24
South Sudan*	-	1	1	1	-	-	2	10	-	-	15
Sudan*	3	2	1	-	2	13	15	94	-	2	132
Tanzania	-	-	1	-	-	-	1	-	-	-	2
Uganda	-	-	1	-	-	-	-	-	-	-	1
Total	9,687	9,704	12,074	12,332	9,160	9,313	30,590	28,613	2,683	2,115	126,271

URBAN POPULATION (GENDER AND NATIONALITY)



* Includes ETM population

REFUGEES* FROM DEMOCRATIC REP. OF THE CONGO

Areas of origin	Population	Percentage
North Kivu	68,492	88.8%
South Kivu	6,553	8.5%
Haut-Katanga	1,286	1.7%
Ituri	118	0.2%
Maniema	123	0.2%
Kasai Orient	18	0.0%
Mai-Ndombe	11	0.0%
Equateur	7	0.0%
Kongo Centra	2	0.0%
Other	506	0.7%
Total	77,116	

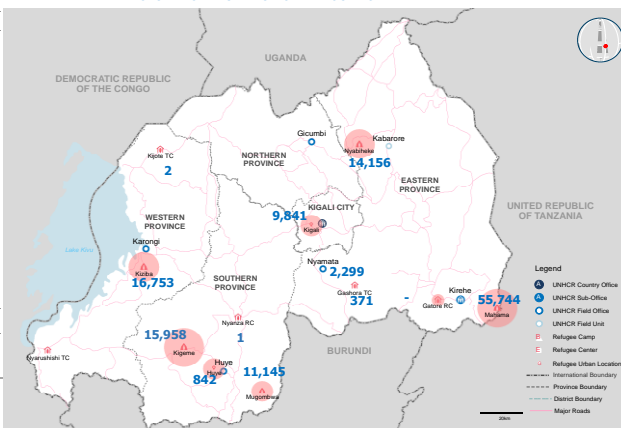
* Includes asylum-seekers

REFUGEES* FROM BURUNDI

Areas of origin	Population	Percentage
Kirundo	24,656	50.6%
Bujumbura Mairie	11,605	23.8%
Muyinga	4,655	9.6%
Ngozi	2,088	4.3%
Karuzi	1,078	2.2%
Cibitoke	508	1.0%
Kayanza	682	1.4%
Ruyigi	460	0.9%
Gitega	454	0.9%
Bubanza	283	0.6%
Other	2,236	4.6%
Total	48,705	

* Includes asylum-seekers

POPULATION DISTRIBUTION BY LOCATION IN RWANDA



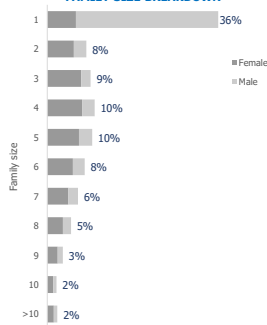
ETM BREAKDOWN BY COO AND GENDER

Country of Origin (ETM)	Female	Male	Total
Chad	0	1	1
Cameroon	1	0	1
South Sudan	1	4	5
Eritrea	43	169	212
Somalia	5	10	15
Sudan	21	109	130
Nigeria	0	0	0
Ethiopia	3	4	7
Total	74	297	371

SPECIFIC PROTECTION NEEDS

Specific Need	Count	Percentage
Child at risk	388	1.8%
Disability	4,375	19.8%
Family unity	432	2.0%
Older person at risk	1,864	8.4%
Serious medical condition	7,080	32.0%
SGBV	1,319	6.0%
Single parent	2,389	10.8%
LPPN	649	2.9%
Torture	684	3.1%
UASC	1,021	4.6%
Woman at risk	1,935	8.7%
Total	22,136	

FAMILY SIZE BREAKDOWN



An individual may have more than one specific need

Percentage represents proportion of family sizes to the total number of households

**Total number of Burundians is the individually registered plus the group registered (48705 + 841 = 49546)

There are 704 Rwandan dependents of registered refugees. They are not included in the above breakdowns.

For More Information: <https://data2.unhcr.org/en/country/rwa/>

Contact: rwakireg@unhcr.org

* ETM : Emergency Transit Mechanism