



145,206
Refugees & Asylum Seekers
40,892 HHs

Nakivale Refugee Settlement
Mbarara Sub-Office



32
Partners

| Sector | Actual status per key indicator | Target/Standard (21') | Actual █ against annual target █ or standard █ |
|-----------------------------|---|--|--|
| Education | 96% children of school going age enrolled in primary school (ERP Sep '21) | 100% | 96% |
| Education | The pupil teacher ratio for primary schools was 1:55 (ERP Sep '21) | 1:59 | Actual: ~55, Target: 59 |
| Environment & Energy | 1,630 households provided access to energy-saving equipment (Q1-3) | 15,608 (target) 1/HH (standard) (incl. host comm.) | 10% |
| Environment & Energy | 282.2 ha of woodlots established and maintained and restored (Q1-3) | 179 ha (incl. host comm.) | >100% |
| Food Security | 122,281 refugees receiving food assistance through cash transfers | 145,206 Individuals | 84% |
| Food Security | 60.7% of HH with poor or borderline Food Consumption Score (Q2 2021 data) | 20% <20% (standard) | Actual: 45, Target: 18 |
| Health & Nutrition | The severe Acute Malnutrition recovery rate was 85.1% | 75% (target) > 75% (standard) | Actual: 85.1, Target/standard: 75 |
| Health & Nutrition | The under-five mortality rate was 0.26 per 1,000 children | 0.1 (target) < 1.5 (standard) | Actual: 0.26, Target/standard: 0.1 |
| Livelihoods & Resilience | # households received emergency livelihood support (NTR for Q3) | 19,182 HHs | 0% |
| Livelihoods & Resilience | 33,542 refugees received financial literacy training | 50,000 Individuals | 67% |
| Child Protection | 4,612 children participating in community-based activities | 23,210 Individuals | 20% |
| SGBV | 255 SGBV survivors received appropriate multi-sectoral support | 322 Individuals | 79% |
| Protection | 17,436 refugees received psychosocial support | 8,450 Individuals | >100% |
| Protection | 327 refugees received legal assistance and legal aid services | 18,000 Individuals | 2% |
| Shelter, Settlement & NFI | # of refugee households with specific needs assisted with semi-permanent shelter (NTR for Q3) | 1,605 HHs | 0% |
| Shelter, Settlement & NFI | # of newly arrived refugee households provided with the minimum emergency shelter support (NTR for Q3) | 746 HHs | 0% |
| Water, Sanitation & Hygiene | 16.6 litres per person per day | 20 litres (target) 20 litres (standard) | Actual: 16.6, Target/standard: 20 |
| Water, Sanitation & Hygiene | 81% household latrine coverage | 80% (target) ≥ 85% (standard) | Actual: 81%, Target: 80, Standard: 85 |
| Cash-Based Interventions | 40,760 households received any forms of cash and voucher assistance (including unconditional cash grant) (NTR for Q3) | 27,000 HHs | 46% |
| Cash-Based Interventions | 2,251 of households receiving cash and voucher assistance for basic needs (multipurpose cash) (Q1-3) | 6,000 HHs | 37% |



Operational Presence

Quarter 3

Nakivale Refugee Settlement

January - September 2021



06
National partners



20
International NGOs



04
UN Agencies



02
Government Partners



| Partner/ Sector | Education | E&E | Food Security | Health & Nutrition | Livelihood | Protection | CP | SGBV | SSNFI | WASH | CBI |
|--------------------|-----------|-----|------------------|-----------------------|------------|------------|----|------|-------|------|-----|
| AIRD | | | | | | | | | IP | OP | |
| Alight | | | | | OP | IP | IP | IP | | | |
| COVIDOD | | | | | OP | | | | | | |
| DRC | | | | | OP | | | | | OP | OP |
| EWB | | | | | | | | | | OP | |
| FAO | | | | | A | | | | | | |
| FRC | | | | | OP | | | | | | |
| HFU | | OP | OP | OP | OP | | | | | | OP |
| HI | OP | | | | | OP | | | | | |
| HIJRA | | | | | | | | | | OP | |
| IDLG | GP | GP | | GP | | | | | | | |
| MALTESER | | | | | | | | | | OP | |
| MTI | | | OP | IP | | | | | | | |
| NFA | | OP | | | | | | | | | |
| NRC | OP | | OP | | OP | OP | OP | | | | OP |
| NSAMIZI | | IP | | | | | | | | IP | |
| OPM | GP | | | | | GP | GP | GP | | | |
| OI | | | | | OP | | | | | | |
| OXFAM | | OP | | | | | | | | OP | |
| RHITES | | | | OP | | | | | | | |
| SCI | | | | | | | OP | | | | |
| TPO | | | | | | OP | | IP | | | |
| TTR | | | | | | OP | | | | | |
| UGAFODE | | | | | OP | | | | | | |
| UGNET | | | | | | | | OP | | | |
| UNICEF | A | | | A | | | | | | A | |
| UNHCR | A | A | | A | | A | A | A | A | A | |
| URCS | | | | OP | OP | | OP | | | | |
| WCC | OP | | | | | | | | | | |
| WCH | OP | | | | | OP | OP | | | | |
| WFP | | | A | A | | | | | | | A |
| WIU | IP | | | | | | | | | | |

African Initiative for Relief and Development

(HIJRA)

(UGAFODE)

(AIRD)

Isingiro District Local Government (IDLG)

Uganda Network on Law Ethics and

Community Volunteer Initiative for Development (COVIDOD)

Medical Teams International (MTI)

HIV/AIDS (UGANET)

Dannish Refugee Council(DRC)

Norwegian Refugee Council (NRC)

United Nations Children Emergency Fund (UNICEF)

Engineers without Borders (EWB)

Opportunity International (OI)

United Nations Refugee Agency (UNHCR)

Food and Agricultural Organisation of the United Nations (FAO)

Regional Health Integration to Enhance Services (RHITES)

Uganda Red Cross Society (URCS)

Finnish Refugee Council(FRC)

Transcultural Psychosocial Organisation

War Child Holland (WCH)

Hunger Fighters Uganda (HFU)

(TPO)

World Food Programme (WFP)

Humanity and Inclusion (HI)

Tutapona Trauma Rehabilitation (TTR)

Windle International Uganda (WIU)

Humanitarian Initiative Just Relief Aid

Uganda Agency for Development Limited

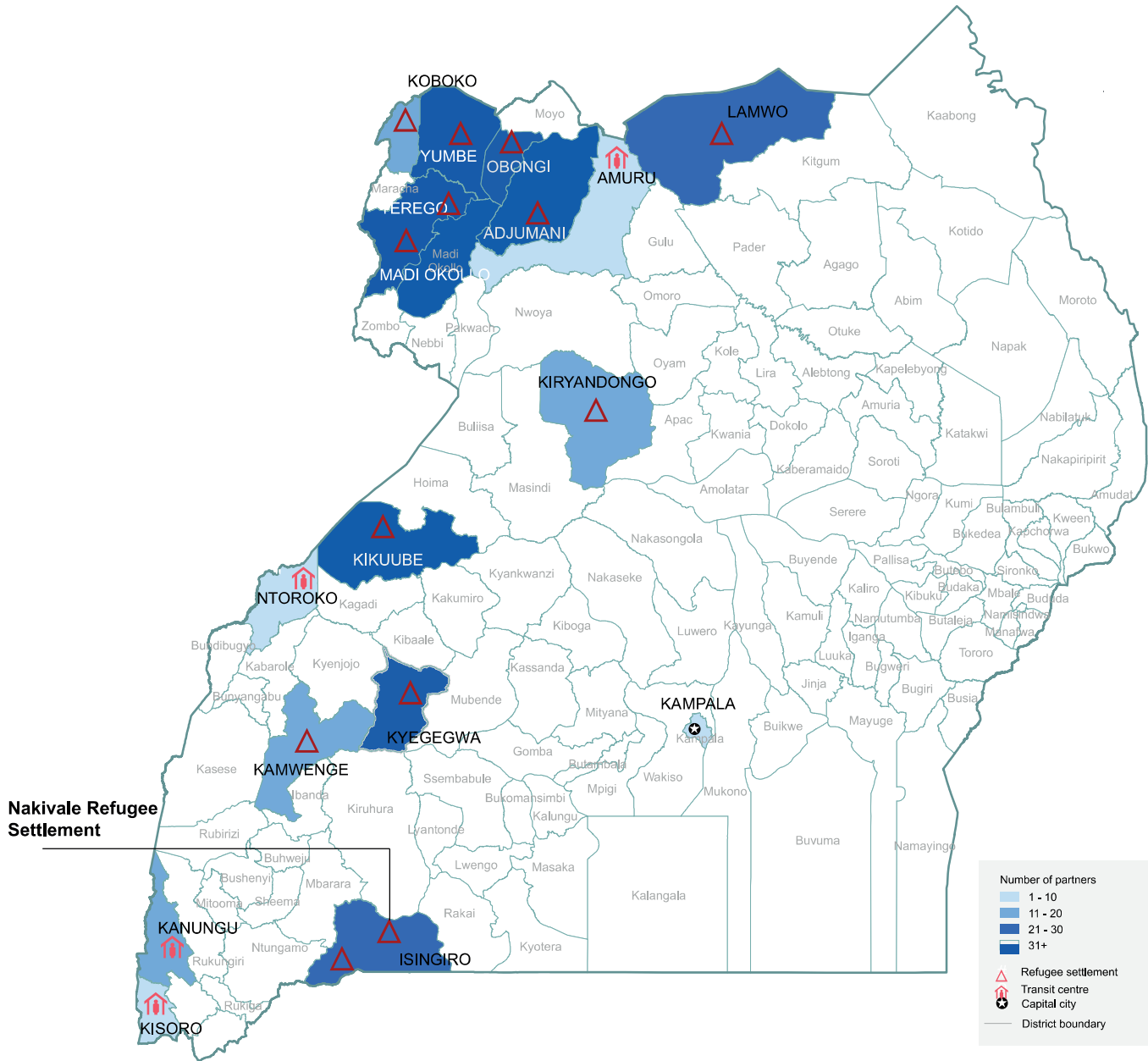


Operational Presence

Quarter 3

Map of Uganda Showing Location of Settlement

January - September 2021



The boundaries and names shown and the designations on this map do not imply official endorsement or acceptance by the United Nations