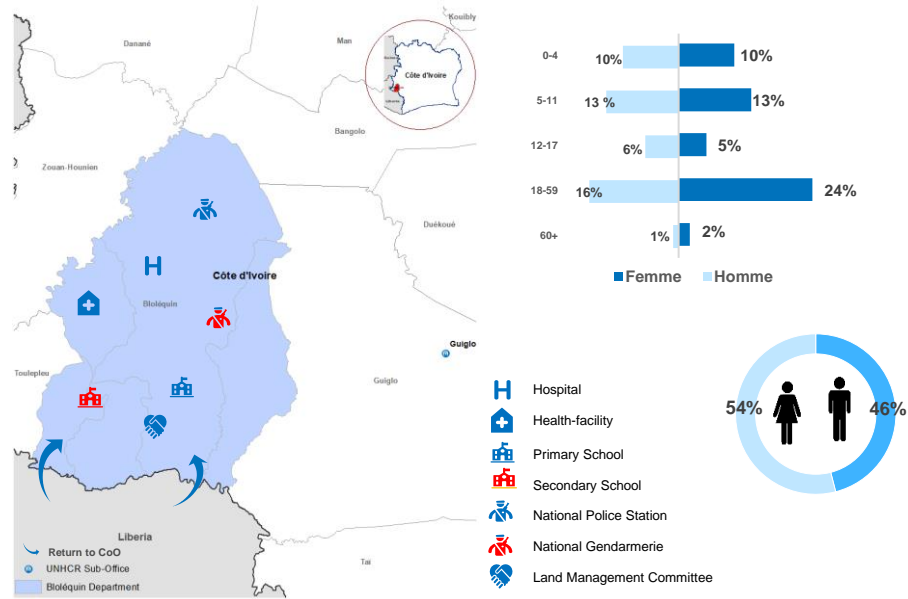
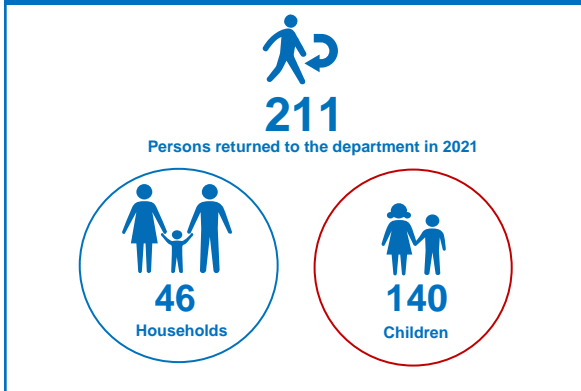
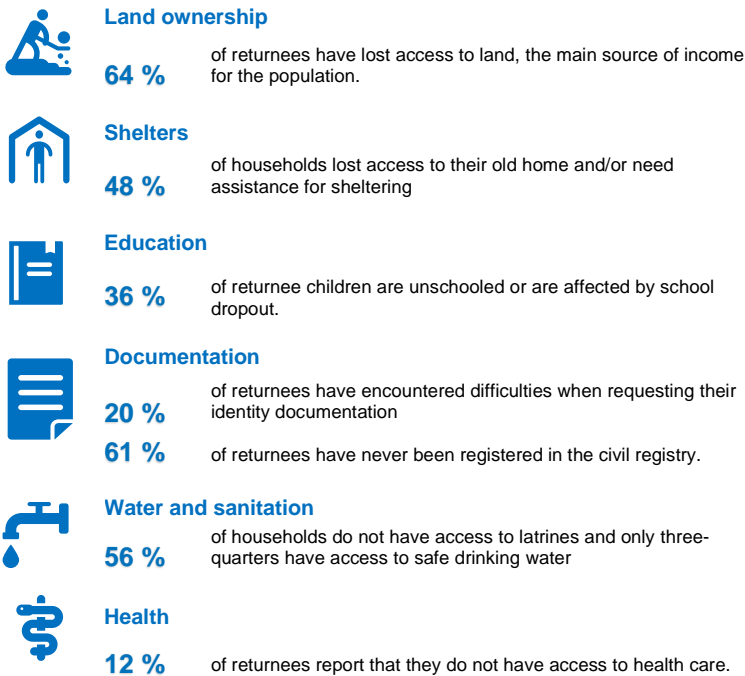
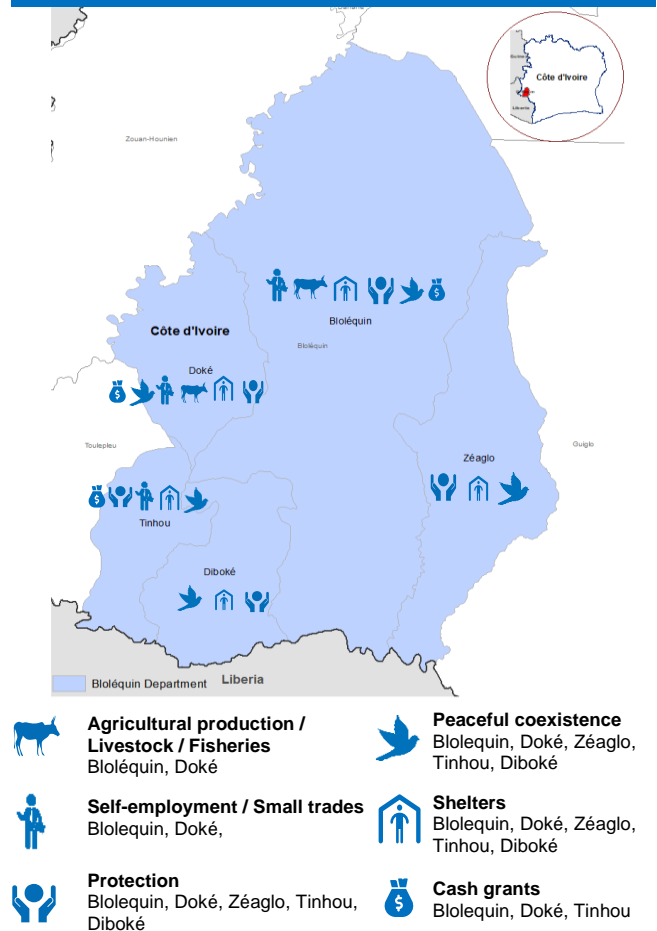


**RETURNEES IN 2021 IN THE DEPARTMENT**
**MAPPING AND DEMOGRAPHIC PROFILE, ACCESS TO BASIC SOCIAL SERVICES IN BLOLEQUIN(2021)**

**MAIN COUNTRY OF ASYLUM OF RETURNEES IN 2021**

**GENERAL SITUATION IN THE DEPARTMENT**

The general situation in the department of Bloléquin is calm and peaceful in terms of security. It supported the holding of household surveys by investigators. No security incidents targeting one or more returnees since the resumption of voluntary repatriation in July 2021 have been reported in the department of Bloléquin and surroundings. The returnees go about their business in peace.

**PRIORITY NEEDS OF RETURNEES**

**MAIN REINTEGRATION ACTIVITIES IN BLOLEQUIN DEPARTMENT**

**MAIN PARTNERS**

**MAIN FUNDERS**

Belgium | Canada | Denmark | France | Germany | Italy | Japan | Netherlands | Private donors Australia | Private donors Republic of Korea | Private donors Sweden | Private donors Republic of Korea | Switzerland | United States of America