

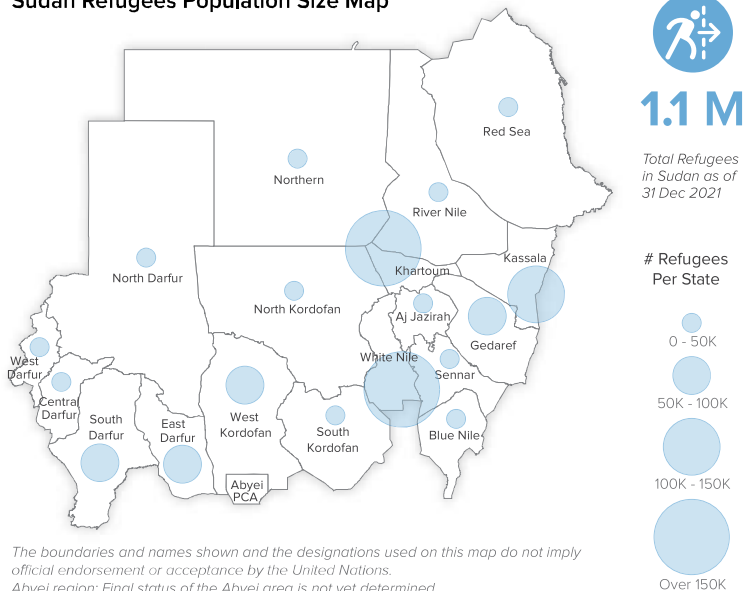
66 Partners
Delivering Refugee Response in Sudan as of Jan 2022*

Government	United Nations
8	7
International NGO	National NGO
34	17

List of Partners:

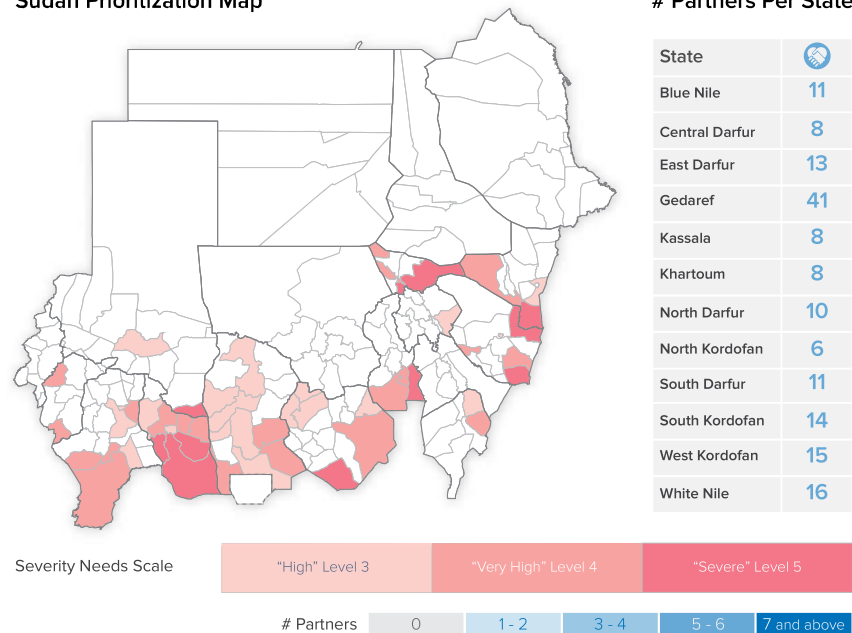
- ACENT (ACENT)
- Adventist Development and Relief Agency (ADRA)
- Africa Humanitarian Action (AHA)
- Agency for Technical Cooperation and Development (ACTED)
- AGF (AGF)
- Al Manar Voluntary Organization (AMVO)
- ALIGHT (ALIGHT)
- ASSIST - Voluntary Humanitarian Assistance Programme (ASSIST)
- Auttach Organization (AUTTACH)
- CAFA Development Organization (CAFA)
- CARE International Switzerland (CIS)
- Catholic Agency For Overseas Development (CAFOD)
- Catholic Relief Services (CRS)
- Commission for Refugees (CoR)
- Concern Worldwide (CWW)
- Cooperazione Internazionale (COOPI)
- Danish Red Cross (IFRC- DRC)
- Danish Refugee Council (DRC)
- Emergency Relief, Rehabilitation and Development Agency (ERRADA)
- Forests National Corporation (FNC)
- Gesellschaft für Internationale Zusammenarbeit (GIZ)
- Global Aid Hand (GAH)
- International Aid Services (IAS)
- International Committee of the Red Cross (ICRS)
- International Medical Corps (IMC)
- International Organization for Migration (IOM)
- International Planned Parenthood Federation (IPPF)
- International Rescue Committee (IRC)
- Islamic Relief Worldwide (IRW)
- Medair Organization (Medair)
- Médecins Sans Frontières (MSF)
- Mercy Corps (MC)
- Muslim Aid- UK (Muslim Aid)
- Mutawinat Benevolent Organization (MUTAWINAT)
- National Planning Organization (NPO)
- Near East Foundation (NEF)
- Norwegian Refugee Council (NRC)
- Norwegian Church Aid (NCA)
- Plan International Sudan (PIS)
- Rural Community Development Organization (RCDO)
- Sahari Organization for Development (SAHARI)
- Salmin Development Organization (SDO)
- Save the Children International (SCI)
- Solidarités International (SI)
- State Council for Child Welfare (SCCW - GCCW)
- State Ministry of Education (SMoE)
- State Ministry of Health (SMoH)
- State Ministry of Social Affairs (MoSA)
- Sudan Family Planning Association (SFFA)
- Sudanese Civil Registry (SCR)
- Sudanese Red Crescent Society (SRCS)
- Tawakkal Organization (TAWAKKI)
- United Nations Development Programme (UNDP)
- United Nations High Commissioner for Refugees (UNHCR)
- United Nations International Children's Emergency Fund (UNICEF)
- United Nations Population Fund (UNFPA)
- Water and Environmental Sanitation (WES)
- Welfare and Development Charity Organization (WeDCO)
- Welthungerhilfe (WHH)
- Windle Trust International (WTI)
- World Food Programme (WFP)
- World Health Organization (WHO)
- World Relief Sudan (WRS)
- World Vision International (WVI)
- ZOA International Sudan (ZOA)

Sudan Refugees Population Size Map



The boundaries and names shown and the designations used on this map do not imply official endorsement or acceptance by the United Nations.
Abyei region: Final status of the Abyei area is not yet determined.

Sudan Prioritization Map



Partners Per Sector, Per State

State	Protection	Education	Health & Nutrition	Food Security & Livelihoods	Energy & Environment	Shelter & NFIs Non-food Items	WASH Water, Sanitation & Hygiene	Logistic & Camp Management
# Partners	28	13	35	16	8	14	30	3
Blue Nile*	5 CAFA, CoR, SRCS, UNHCR, UNFPA	3 SCI, UNHCR, WTI	2 CAFA, UNFPA	2 IRW, WFP	0 -	2 ACTED, UNHCR	2 UNHCR, WRS	0 -
Central Darfur	4 CoR, DRC, SCI, UNHCR	1 SCI	4 CRS, IMC, SCI, SRCS	2 CRS, WFP	0 -	2 DRC, UNHCR	2 CRS, SCI	0 -
East Darfur	4 ALIGHT, CoR, UNHCR, MUTAWINAT	2 SMoE, UNICEF	3 ALIGHT, MSF, WHO	1 WFP	1 FNC	1 SRCS	3 ALIGHT, CIS, ZOA	0 -
Gedaref*	14 ALIGHT, CoR, DRC, ICRS, IOM, IRC, MSF, NCA, PIS, SCCW-GCCW, SRCS, UNHCR, UNICEF, WHH	4 IRW, NRC, SCI, UNICEF	18 ACENT, AGF, ALIGHT, CWW, IMC, IOM, IPPF, IRW, Medair, MSF, MC, NCA, SMoH, SEPA, SRCS, UNDP, UNICEF, ZOA	6 ACTED, IRC, IRW, Muslim Aid, WeDCO, WFP	5 FNC, GAH, IPPF, NCA, UNDP	7 ACTED, DRC, Medair, NRC, UNHCR, WHH, WFP	18 CIS, COOPI, IOM, IRC, IRW, Medair, MSF, NPO, NCA, RCDO, SDO, SI, SRCS, TAWAKKI, UNHCR, UNICEF, WHH, ZOA	3 CoR, DRC, UNHCR
Kassala*	4 IFRC- DRC, UNFPA, UNHCR, WHH	1 GIZ	3 UNFPA, UNHCR, WFP	3 Muslim Aid, UNHCR, WHH	1 WHH	2 IFRC- DRC, WHH	3 CIS, UNHCR, WHH	0 -
Khartoum	5 AMVO, CAFOD, CoR, COOPI, DRC, MUTAWINAT, UNHCR	0 -	4 AMVO, CoR, COOPI, MSF	1 COOPI	1 DRC	1 DRC	1 COOPI	0 -
North Darfur	6 AHA, MUTAWINAT, CoR, SAHARI, UNHCR, WHH	2 AUTTACH, SMoE	3 SAHARI, SMoH, WHH	3 SAHARI, SRCS, WHH	0 -	3 AHA, UNHCR, WHH	2 SAHARI, WHH	0 -
North Kordofan	3 CoR, MUTAWINAT, UNHCR	1 IAS	1 AMVO	1 IRW	0 -	0 DRC, UNHCR	1 IAS	0 -
South Darfur	8 COR, GAH, NCA, MUTAWINAT, UNHCR, UNICEF, UNFPA, WVI	3 ERRADA, NCA, UNICEF	4 NCA, SMoH, UNICEF, WVI	0 -	0 -	1 NCA	4 NCA, UNICEF, WES, WVI	0 -
South Kordofan	5 COR, MUTAWINAT, DRC, MoSA, UNHCR	0 -	6 AMVO, CIS, CWW, SCI, SMoH, WVI	3 DRC, NEF, SCI	0 -	1 SCI	3 CIS, UNICEF, WES	0 -
West Kordofan	6 COR, MUTAWINAT, IOM, MoSA, UNHCR, UNICEF	2 SMoE, UNICEF	7 AMVO, CWW, GAH, IRW, SMoH, UNICEF, WHO	2 IRW, WFP	1 UNICEF	1 CWW	2 WES, UNICEF	0 -
White Nile	5 CoR, MUTAWINAT, PIS, SCR, UNHCR	3 ADRA, NRC, SMoE	6 ASSIST, PIS, SMoH, SRCS, UNHCR, WFP	2 MC, WFP	1 FNC	2 ADRA, UNHCR	6 ASSIST, CAFOD, MC, NRC, SRCS, WES	0 -

*Gedaref (as of 05 Dec 2022) and Blue Nile (as of 01 Jan 2022) 4Ws data cover only Ethiopian Emergency Situation | *Kassala 4Ws data, as of 30 Apr 2021.

