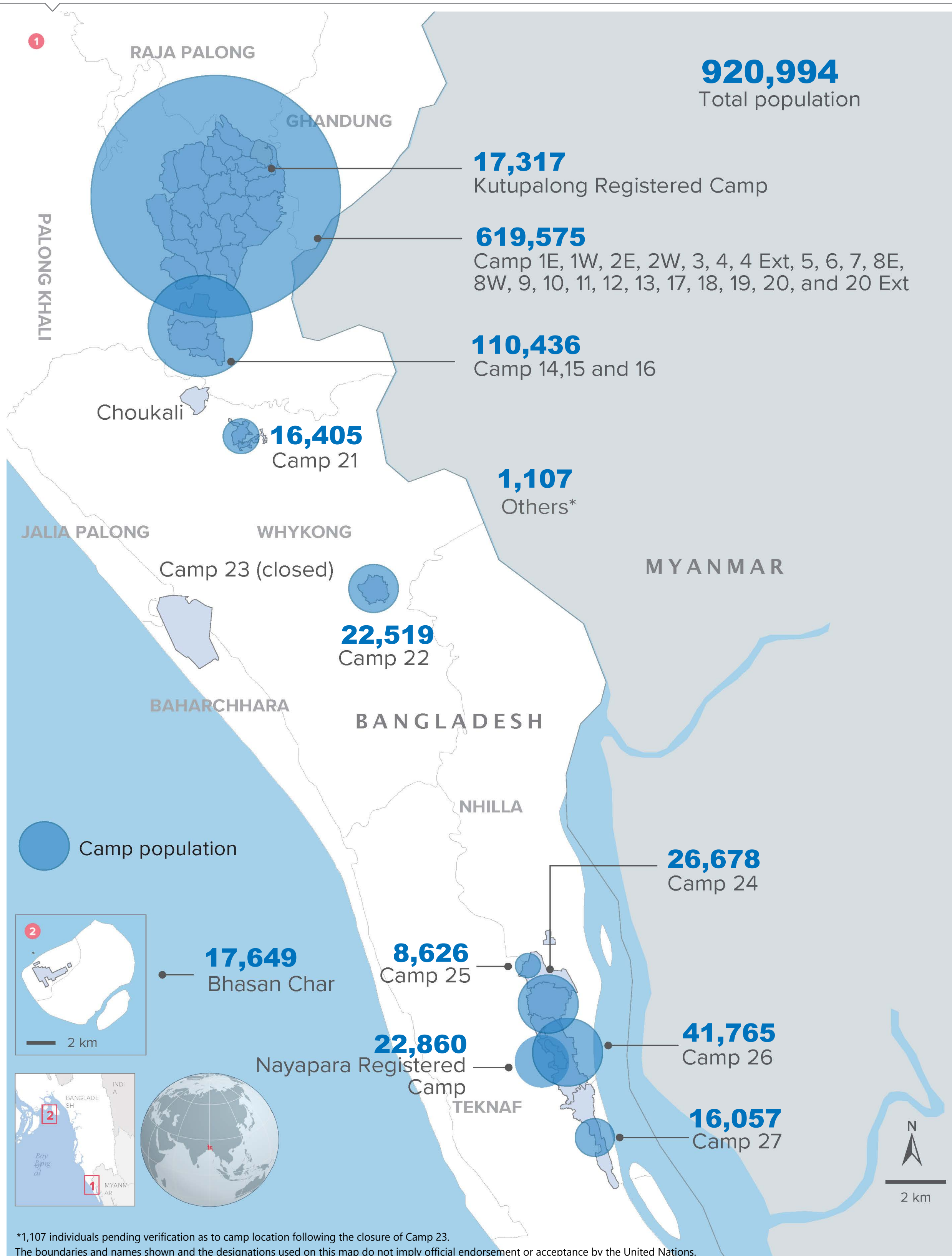


## Rohingya Population by Location

(as of 31 Jan 2022)



\*1,107 individuals pending verification as to camp location following the closure of Camp 23.

The boundaries and names shown and the designations used on this map do not imply official endorsement or acceptance by the United Nations.

Creation date: 31 Jan 2022

**Source:** GoB - UNHCR Joint Registration Exercise