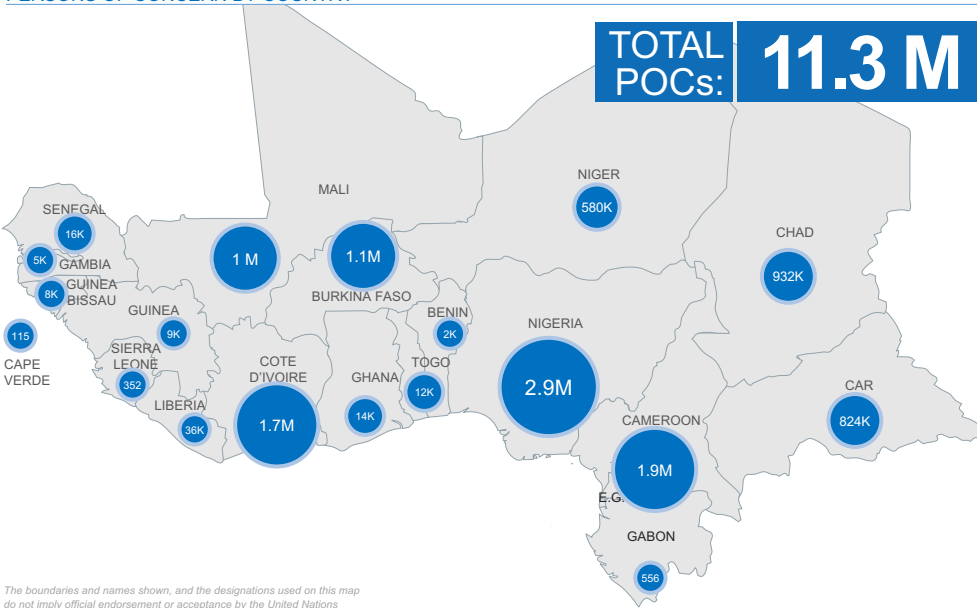
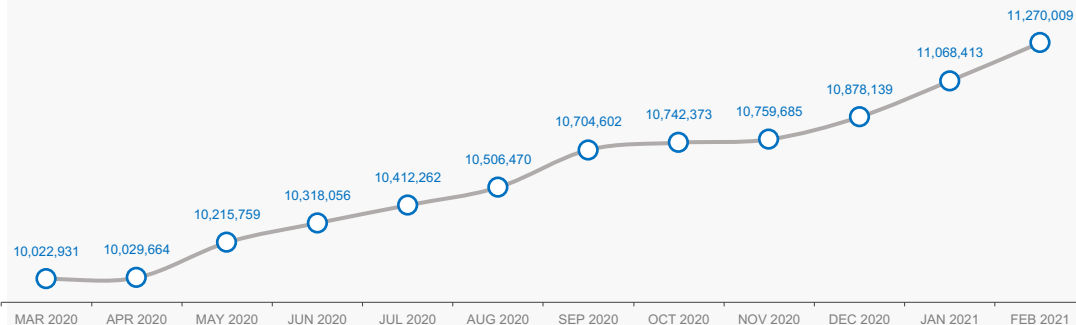


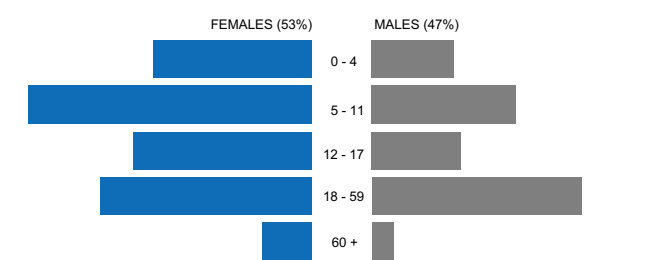
PERSONS OF CONCERN BY COUNTRY



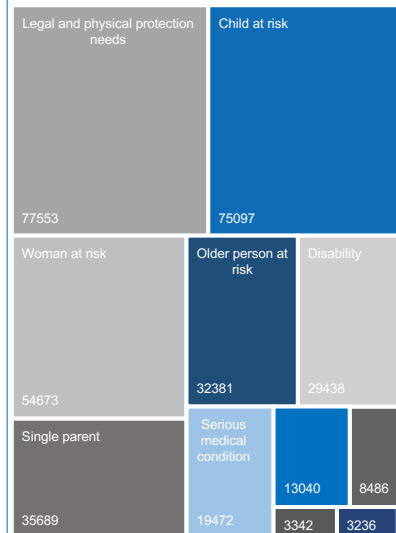
POPULATION TRENDS (PAST 12 MOIS)



AGE AND GENDER (REFUGEES AND ASYLUM SEEKERS)



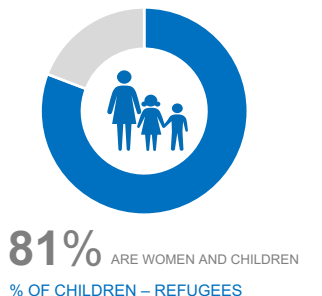
REF & ASY WITH SPECIFIC NEEDS



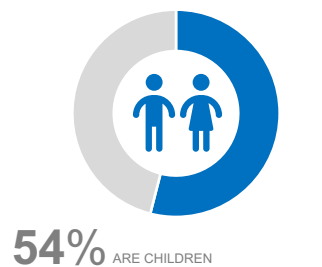
PERSONS OF CONCERN – BREAKDOWN BY COUNTRY AND POPULATION GROUP

| | REFUGEES | ASYLUM SEEKERS | REFUGEE RETURNEES | IDP | IDP RETURNEES | STATELESS | OTHERS | TOTAL |
|--------------------|------------------|----------------|-------------------|------------------|------------------|------------------|----------------|-------------------|
| BENIN | 1,408 | 506 | | | | | | 1,914 |
| BURKINA FASO | 20,256 | 34 | | 1,121,960 | | | | 1,142,250 |
| CAMEROON | 440,461 | 7,591 | | 1,032,942 | 465,757 | | | 1,946,751 |
| CAPE VERDE | | | | | | 115 | | 115 |
| CAR | 9,087 | 288 | 17,671 | 741,879 | 55,834 | | | 824,759 |
| CHAD | 492,247 | 4,577 | | 336,124 | | | 99,765 | 932,713 |
| COTE D'IVOIRE | 2,099 | 403 | 75,430 | | | 1,656,330 | | 1,734,262 |
| GABON | 472 | 84 | | | | | | 556 |
| GAMBIA | 4,399 | 212 | | | | | | 4,611 |
| GHANA | 12,297 | 1,649 | | | | | | 13,946 |
| GUINEA | 6,031 | 3,551 | | | | | | 9,582 |
| GUINEA BISSAU | 7,803 | 38 | | | | | | 7,841 |
| LIBERIA | 8,196 | 28,449 | | | | | | 36,645 |
| MALI | 47,581 | 974 | 84,743 | 346,864 | 582,079 | | | 1,062,241 |
| NIGER | 234,289 | 3,310 | | 300,320 | | | 42,691 | 580,610 |
| NIGERIA | 66,220 | 2,939 | | 2,872,823 | | | | 2,941,982 |
| SENEGAL | 14,350 | 1,944 | | | | | | 16,294 |
| SIERRA LEONE | 352 | | | | | | | 352 |
| TOGO | 11,877 | 708 | | | | | | 12,585 |
| GRAND TOTAL | 1,379,425 | 57,257 | 177,844 | 6,752,912 | 1,103,670 | 1,656,445 | 142,456 | 11,270,009 |

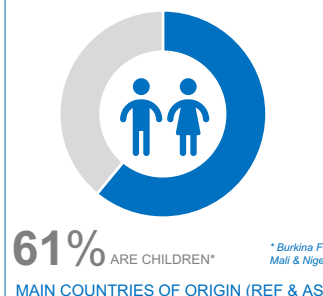
% OF WOMEN & CHILDREN - REFUGEES



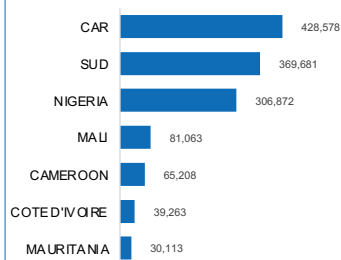
% OF CHILDREN – REFUGEES



% OF CHILDREN - IDPs



MAIN COUNTRIES OF ORIGIN (REF & ASY)



RURAL VS URBAN

