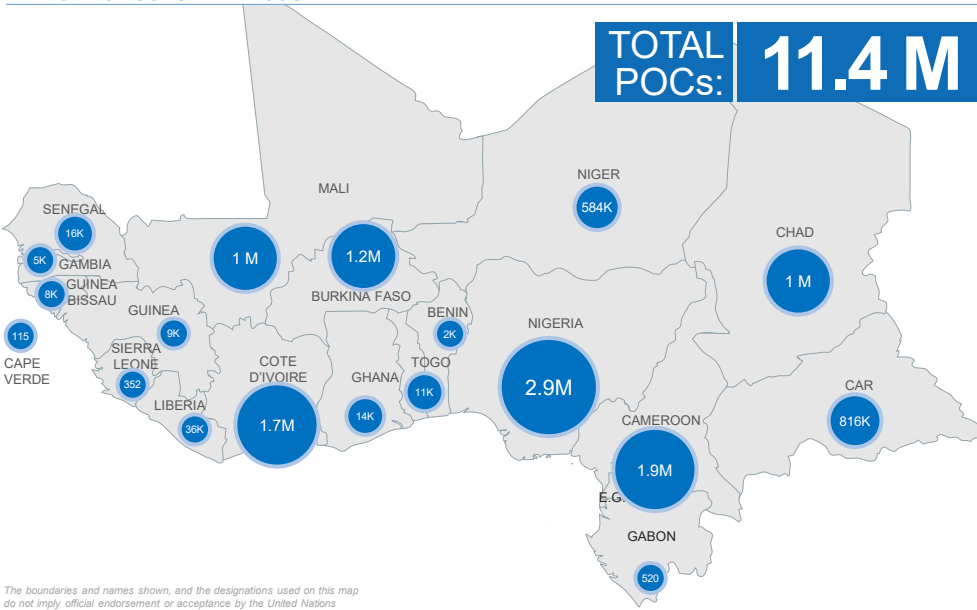
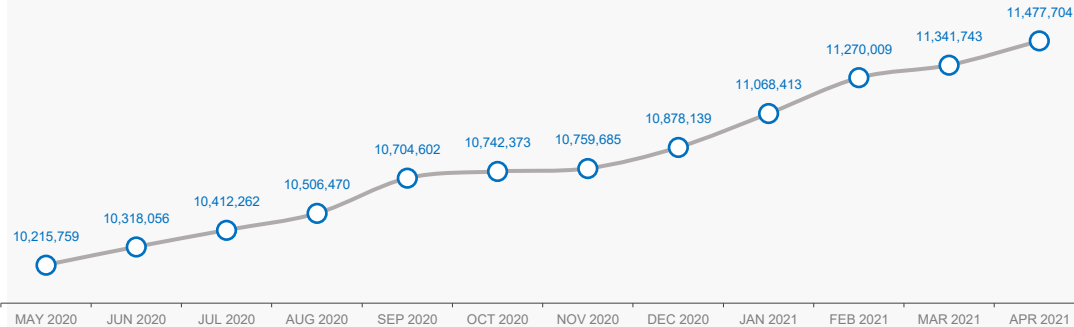


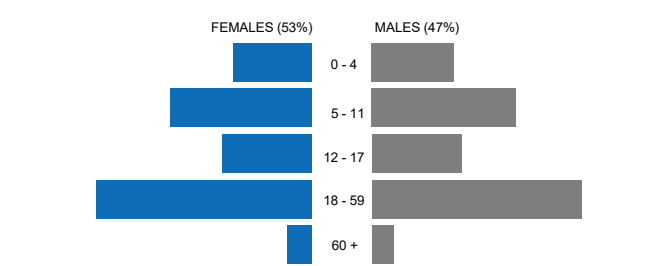
PERSONS OF CONCERN BY COUNTRY



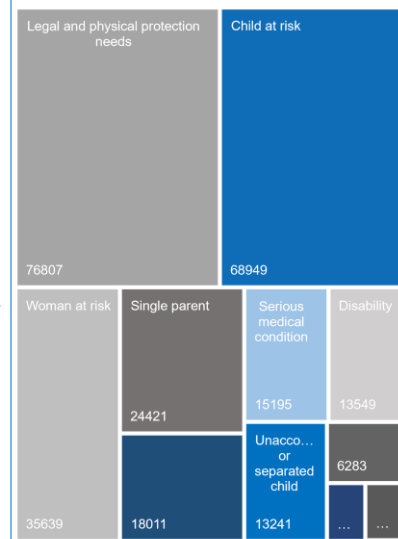
POPULATION TRENDS (PAST 12 MOIS)



AGE AND GENDER (REFUGEES AND ASYLUM SEEKERS)



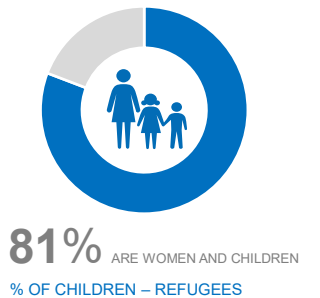
REF & ASY WITH SPECIFIC NEEDS



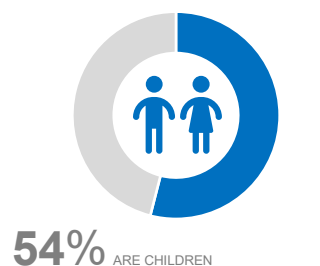
PERSONS OF CONCERN – BREAKDOWN BY COUNTRY AND POPULATION GROUP

	REFUGEES	ASYLUM SEEKERS	REFUGEE RETURNEES	IDP	IDP RETURNEES	STATELESS	OTHERS	TOTAL
BENIN	1,408	506						1,914
BURKINA FASO	22,045	33		1,218,754				1,240,832
CAMEROON	441,052	5,859		1,032,942	465,757			1,945,610
CAPE VERDE						115		115
CAR	9,087	297	21,421	729,005	55,834			815,644
CHAD	500,313	4,554		401,511			99,503	1,005,881
COTE D'IVOIRE	2,099	403	75,430			1,656,330		1,734,262
GABON	458	62						520
GAMBIA	4,399	212						4,611
GHANA	12,318	1,775						14,093
GUINEA	6,035	3,551						9,586
GUINEA BISSAU	7,803	38						7,841
LIBERIA	8,196	28,449						36,645
MALI	47,581	974	84,743	346,864	582,079			1,062,233
NIGER	237,387	3,341		300,320			42,973	584,021
NIGERIA	71,184	1,634		2,912,942				2,985,760
SENEGAL	14,350	1,944						16,294
SIERRA LEONE	352							352
TOGO	10,727	763						11,490
GRAND TOTAL	1,396,788	54,393	181,594	6,942,338	1,103,670	1,656,445	142,476	11,477,704

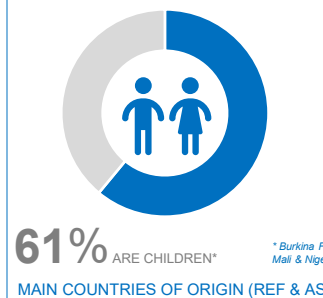
% OF WOMEN & CHILDREN - REFUGEES



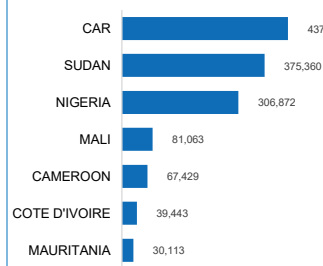
% OF CHILDREN – REFUGEES



% OF CHILDREN - IDPs



MAIN COUNTRIES OF ORIGIN (REF & ASY)



RURAL VS URBAN

