



Food and Agriculture Organization
of the United Nations

Drought in Eastern Africa, current situation and livelihoods implications

A discussion with the 'Economic Inclusion Exchange Working Group'



Sub-Regional Office for Eastern Africa



The New Normal

- Poor rains** 5 out of 6 below average rainfall seasons since 2016
- Conflict** Somalia, South Sudan



2018

2019



- Cyclone** Somalia
- Floods** Somalia, Kenya
- Conflict** Somalia, South Sudan

2020



- Covid-19** Global
- Desert Locust** Regional
- Conflict** Ethiopia, Somalia, South Sudan
- floods** Rwanda, Somalia, South Sudan, Sudan
- Cyclone** Somalia

2021



- Covid-19** Global
- Desert Locust** Regional
- Conflict** Ethiopia, Somalia, South Sudan
- floods** South Sudan
- Drought** Ethiopia, Kenya, Somalia

2022

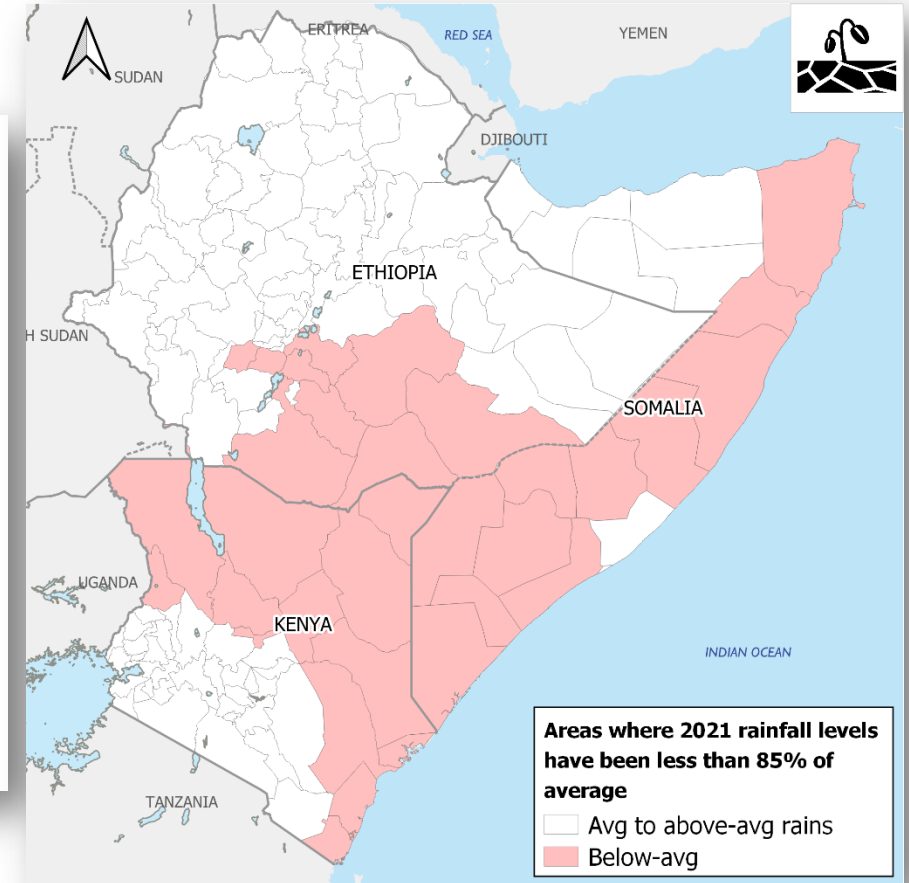
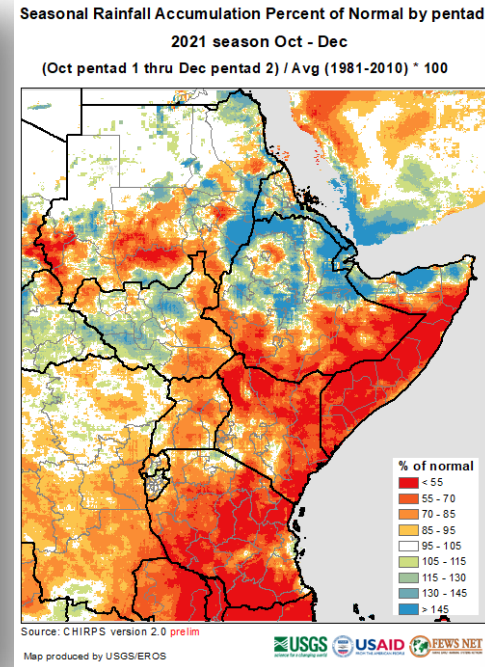
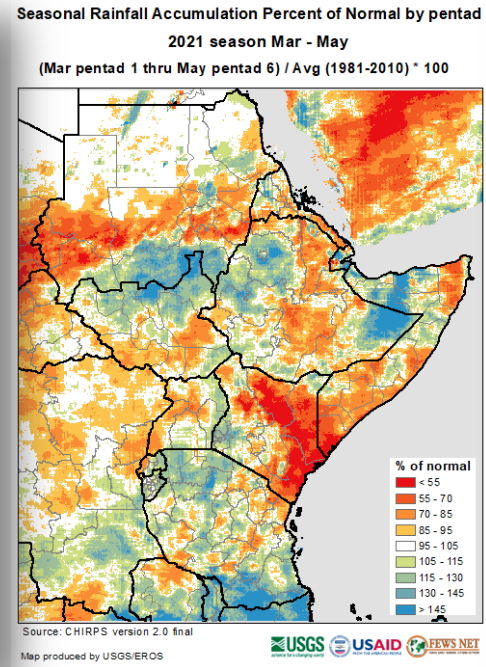
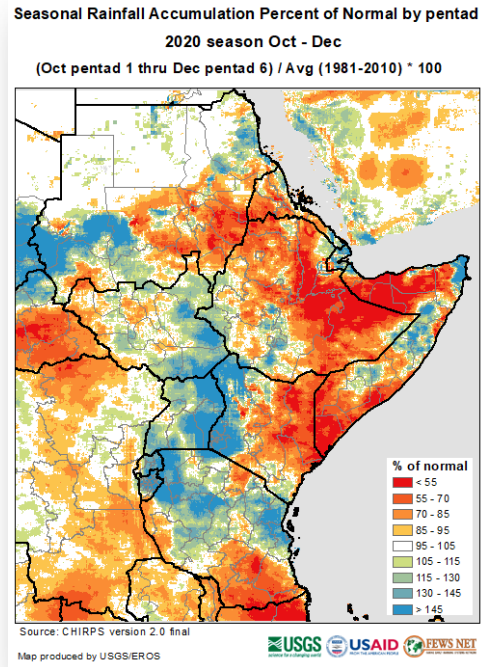


- Price increase** Ethiopia, Kenya, Somalia



The unfolding drought (2020-2021)

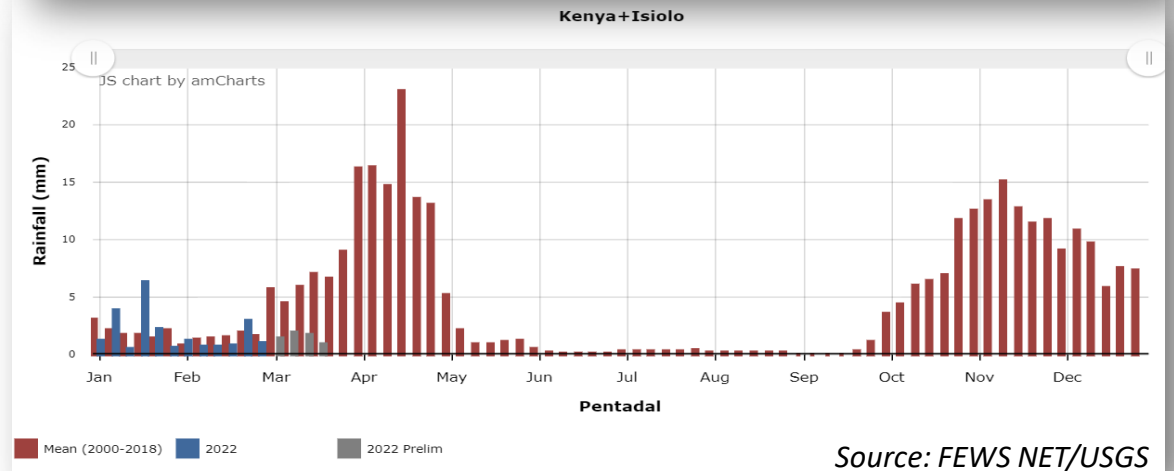
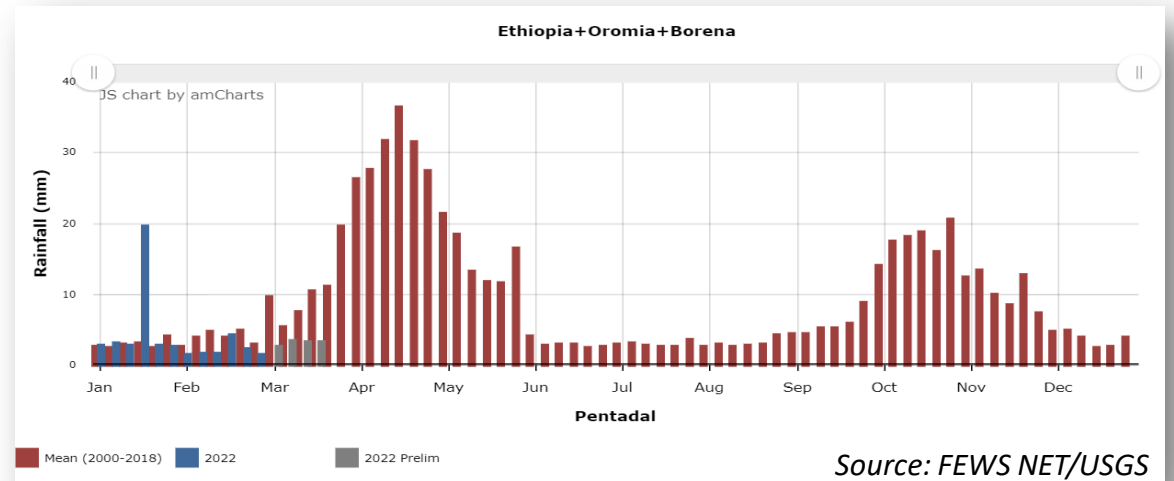
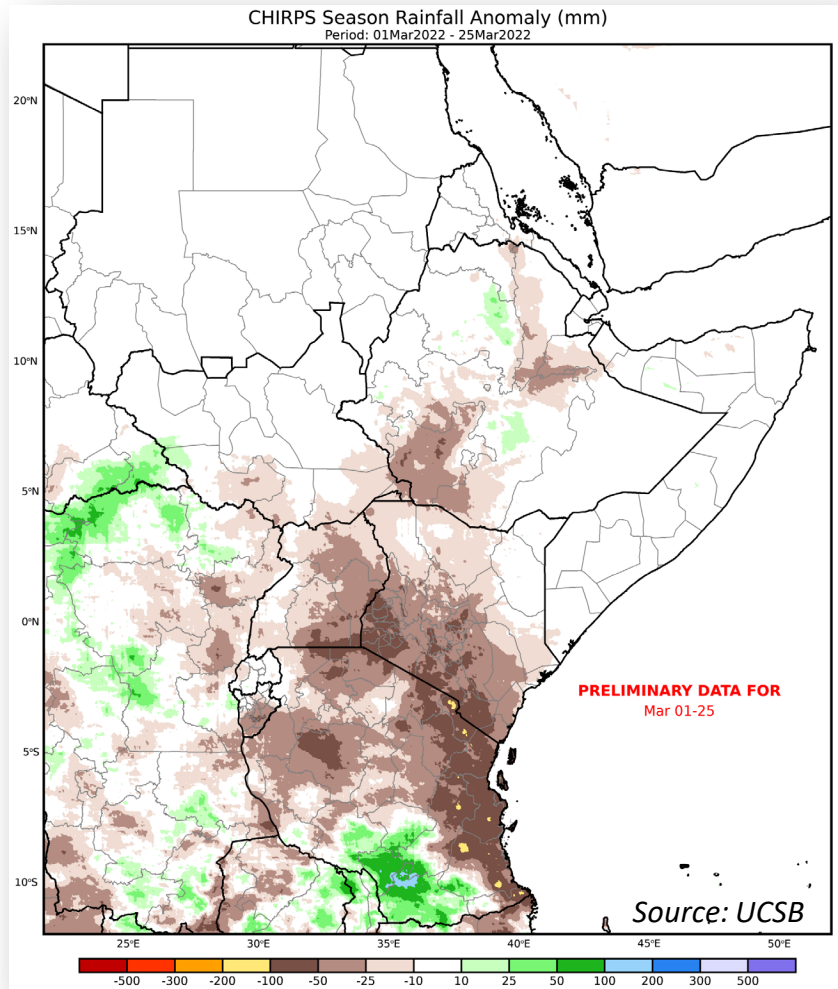
From below average rainfall to drought



Source of data: USGS/FEWS NET; Source of graphic: FAO

The unfolding drought (2022)

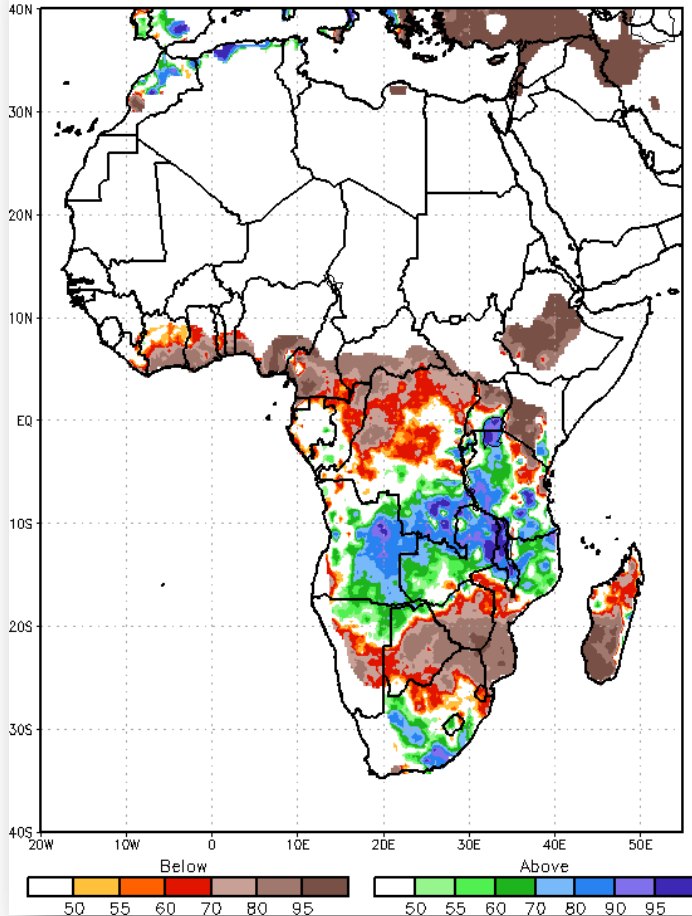
Rainfall anomalies (mm): 1 to 25 March 2022



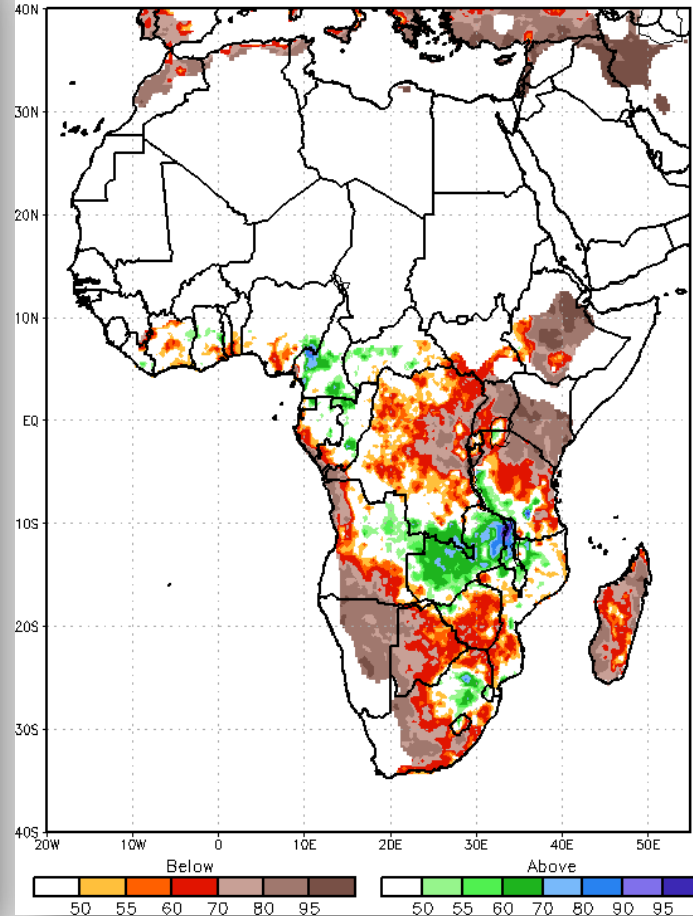
The unfolding drought (2022)

Short-term forecast suggests below average

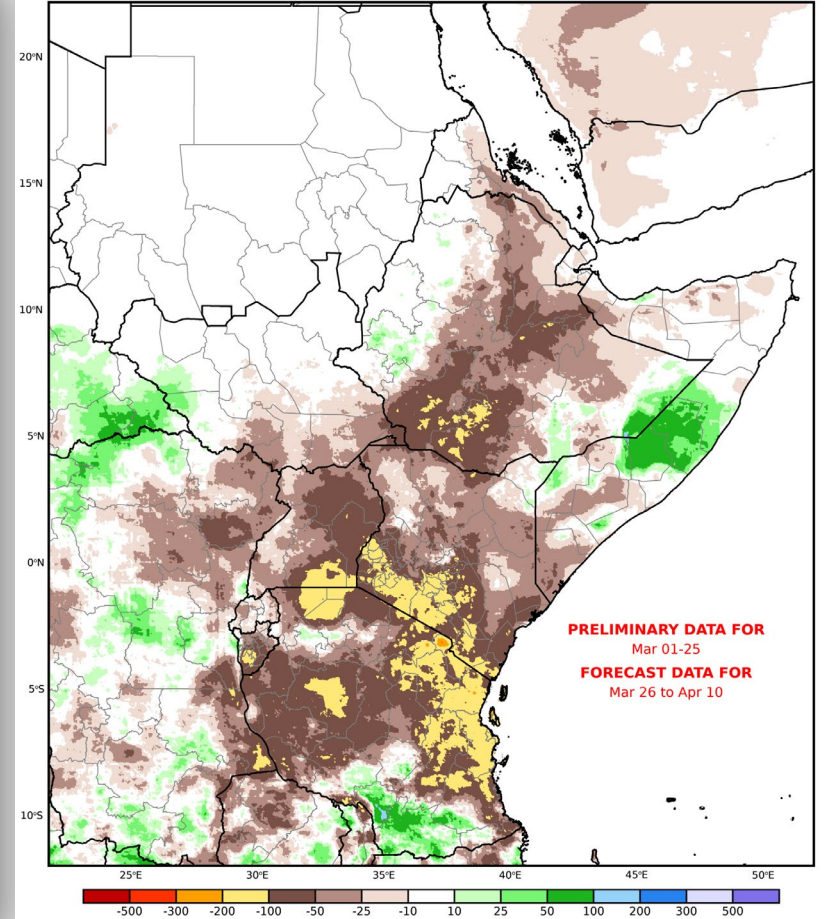
GEFS Week 1 Forecast (Valid: March 29, 2022 – April 04, 2022)
Wet(>120%) and Dry(<80%) Probability



GEFS Week 2 Forecast (Valid: April 05, 2022 – April 11, 2022)
Wet(>120%) and Dry(<80%) Probability



CHIRPS Season Rainfall Anomaly (mm)
Period: 01Mar2022 - 10Apr2022



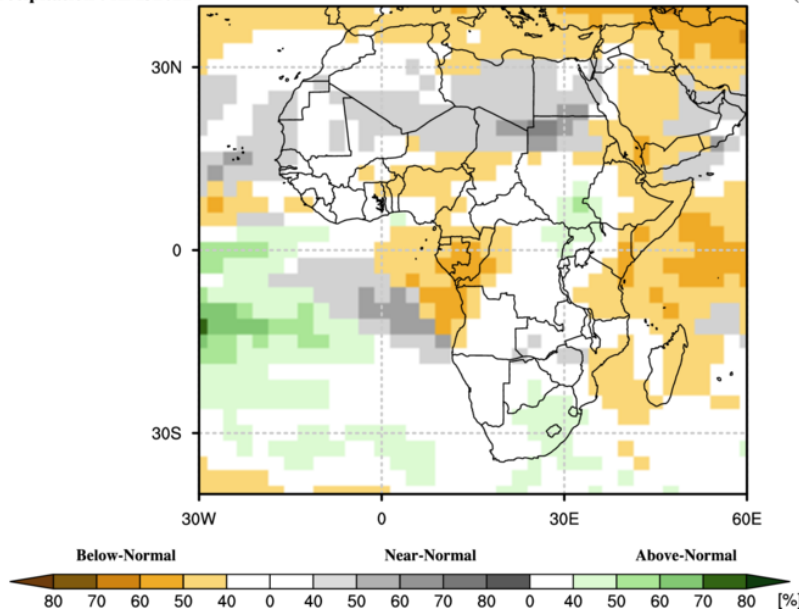
The unfolding drought (2022)

Long-rains seasonal forecast

Probabilistic Multi-Model Ensemble Forecast

Beijing, CMCC, CPTEC, ECMWF, Exeter, Melbourne, Montreal, Moscow, Offenbach, Seoul, Tokyo, Toulouse, Washington

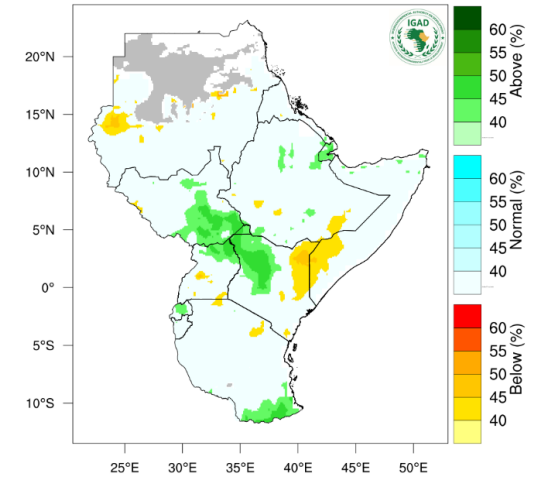
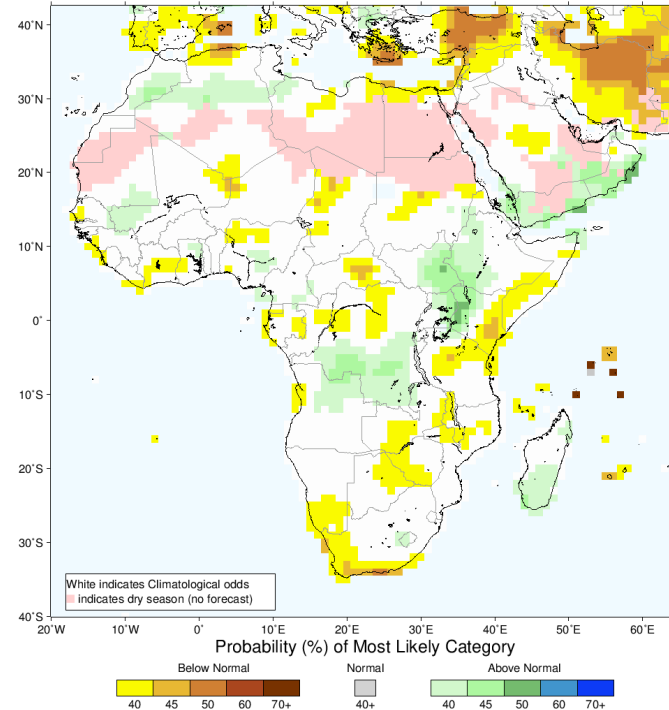
Precipitation : AMJ2022



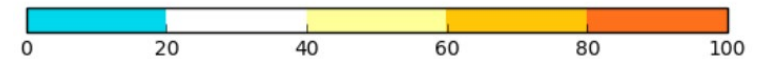
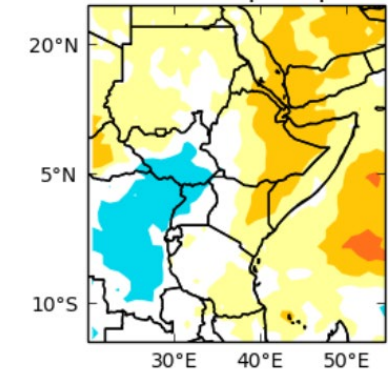
(issued on Mar2022)



IRI Multi-Model Probability Forecast for Precipitation for April-May-June 2022, Issued March 2022

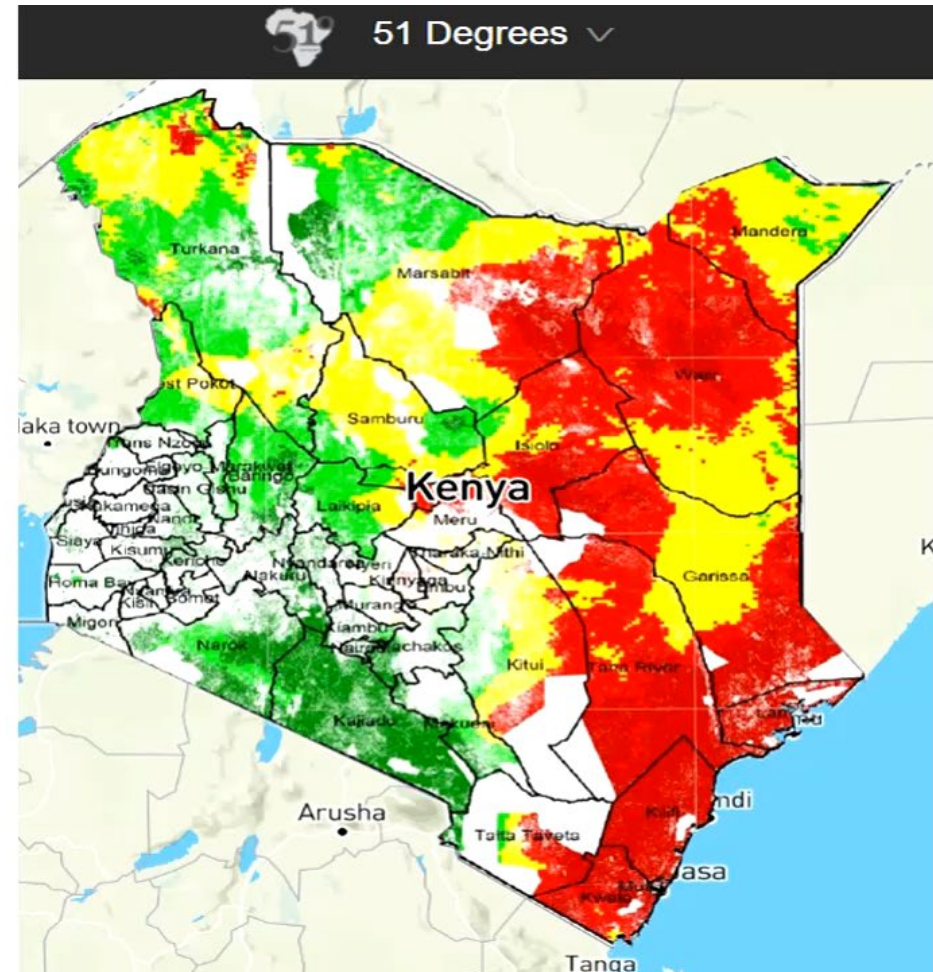
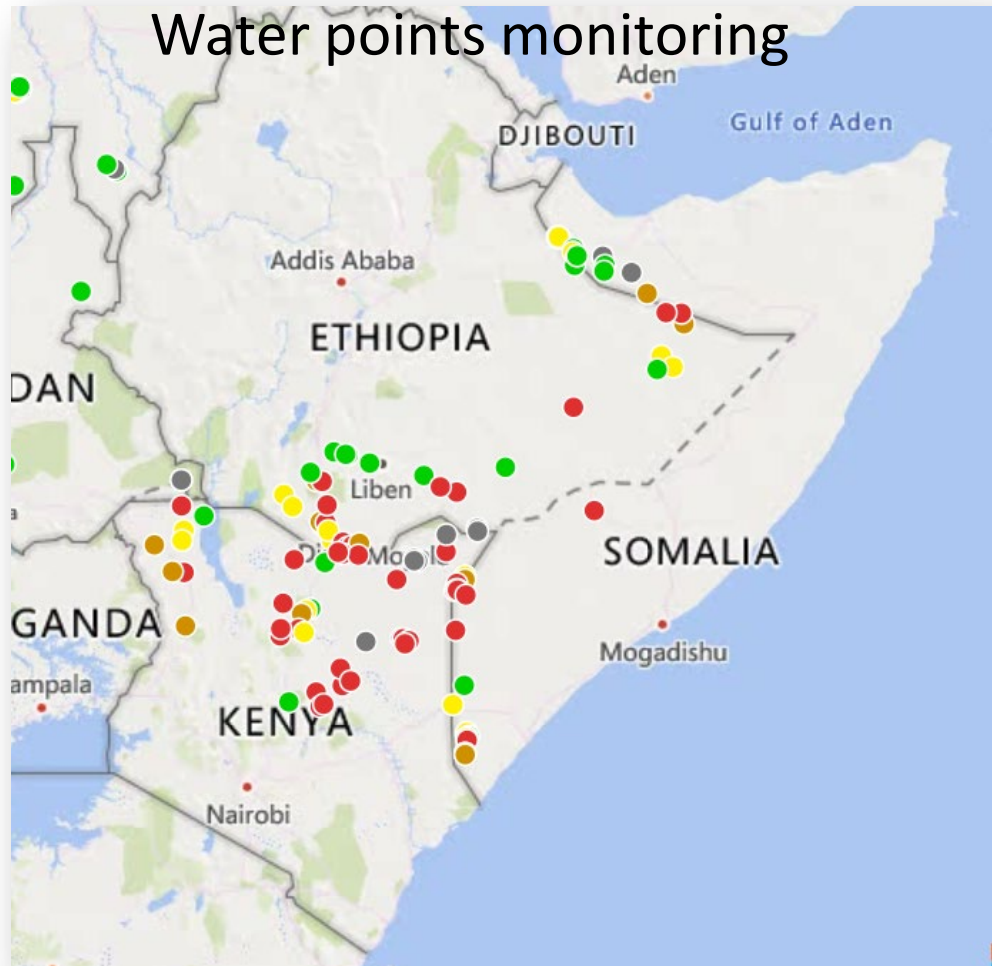


below normal precipitation



The unfolding drought (2022)

Implication on pastoral communities





Economic impact of drought

“A 1% increase in the area affected by drought can slow a country’s gross domestic product (GDP) growth by 2.7% per year”

EU, Science for environment policy

Over 34 percent of crop and livestock production loss in LDCs and LMICs is traced to drought, costing the sector \$37 billion overall. Drought impacts agriculture almost exclusively. The sector sustains 82 percent of all drought impact, compared to 18 percent in all other sectors.

FAO, The impact of disasters and crises on agriculture and food security: 2021



Driven out by drought





Addressing displacement, durable solutions

✓ Global Refugee Forum pledges

✓ Global FAO-UNHCR MoU

← → ↻ 🏠 globalcompactrefugees.org/channel/pledges-contributions

UNHCR The UN Refugee Agency | **GLOBAL COMPACT ON REFUGEES** DIGITAL PLATFORM

ABOUT | **GOOD PRACTICES** | **PLEDGES & CONTRIBUTIONS** | **GCR IN ACTION**

Keyword Search

Search

Search or Filter Pledges and Contributions

Food and Agriculture Organiza... X

Areas of Focus

Submitting Region

Receiving Region

Pledge Id (Eg. GRF-00001)

Name

- ⊞ Agricultural circular economy for energy to improve livelihood of refugee and host communities in Uganda
- ⊞ Agricultural value chains development for improved livelihood opportunities and energy access in Kenya and Uganda
- ⊞ FAO/UNHCR collaboration on sustainable agricultural livelihoods for refugees and other persons of concern to UNHCR in Ea
- ⊞ Improving energy access for refugees and host communities and fighting desertification in Diffa (Niger)
- ⊞ Integration of refugee data into the Global Report on Food Crises and of UNHCR in the Food Security Information Network
- ⊞ Promoting self-reliant livelihoods of Syrian under Temporary Protection (SuTP) and host communities through provision of
- ⊞ Selected "safe-bet" value chains
- ⊞ Sustainable Energy Solutions for Humanitarian Response in Djibouti

Type of Pledge

Type	Count
Financial	3
Legal and Po...	5
Material and...	9
Other	2

Area of Focus

Area	Count
Energy and inf...	1
Jobs and liveli...	3
Other	6

10

Total Number of Pledges

100%

Joint

Pledge Implementation Progress

Fulfilled

Pledging Entity Type

International Organizations 10

Receiving Countries (when specified)

Details of Pledge Implementation Progress

Query returned more than one row, please filter data to return one row

* Progress is based on self-reporting by pledging entities.

The boundaries and names shown and the designations used on this map do not imply official endorsement or acceptance by the United Nations. Global/Multiple pledges include pledges that specify activities in multiple regions and pledges that are global in scope.

Microsoft Power BI



Food and Agriculture Organization
of the United Nations

Thank you



Food and Agriculture
Organization of the
United Nations



**SUSTAINABLE
DEVELOPMENT
GOALS**