

Background & Methodology

As of 6 April, more than 4.3 million refugees have reportedly fled Ukraine, with 401,704 refugees arriving in the Republic of Moldova, around 100,000 of whom have remained in the country (UNHCR). To respond to their needs, the Moldovan authorities have established 95 Refugee Accommodation Centres (RACs) across the country. As of 6 April, centres have the capacity to host a total of 8,530 refugees, and are currently hosting 3,853 refugees.

To understand the needs of these centres, the National Agency for Social Assistance (ANAS), with the support of UNHCR, ACTED, and REACH, conducted key informant interviews (KIIs) with purposefully selected RAC focal points who reported on the situation in the centres. Data collection took place on 6 April through phone interviews. This factsheet presents the main requests from **80 assessed RACs**. Findings should be considered indicative.

Reported capacity of RACs

of people that can be hosted at the 95 RACs: **8,530**

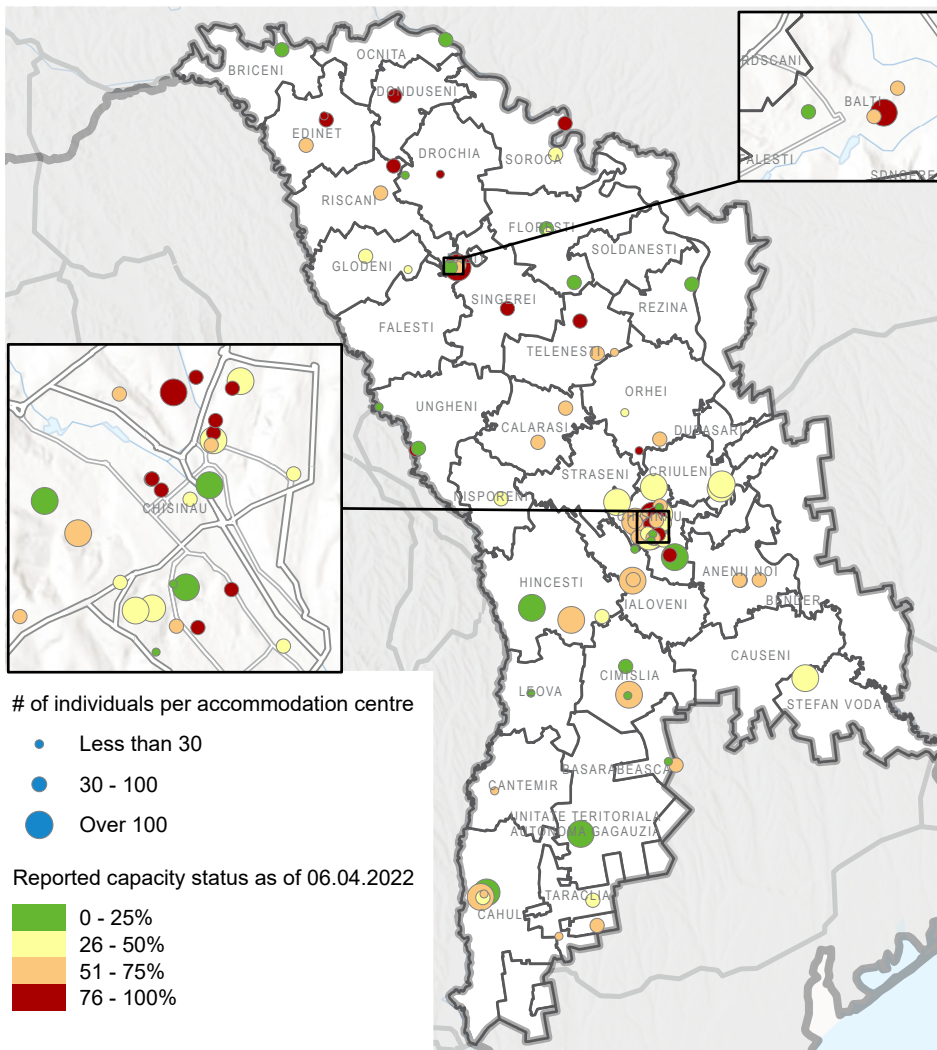


of people that are currently being hosted at the RACs

of places available at the RACs

Source: ANAS, Registry of Refugee Accommodation Centres, 06.04.2022

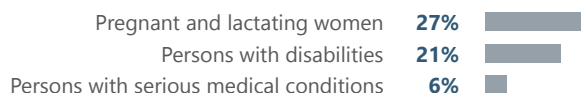
RAC Locations



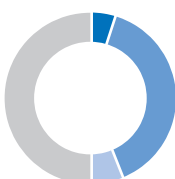
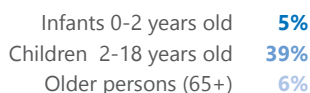
Source: ANAS, Registry of Refugee Accommodation Centres, 06.04.2022

Key information

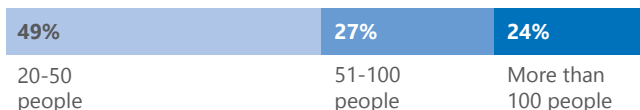
% of assessed RACs with the following vulnerable groups currently present



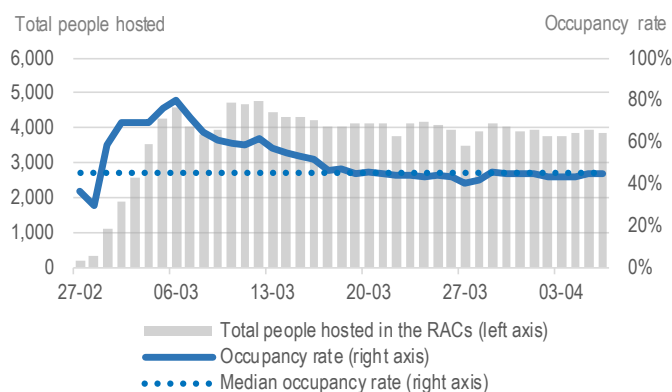
Estimated % of people currently hosted at the assessed RACs who are infants, children, or older persons



% of RACs by hosting capacity (out of 95 RACs)



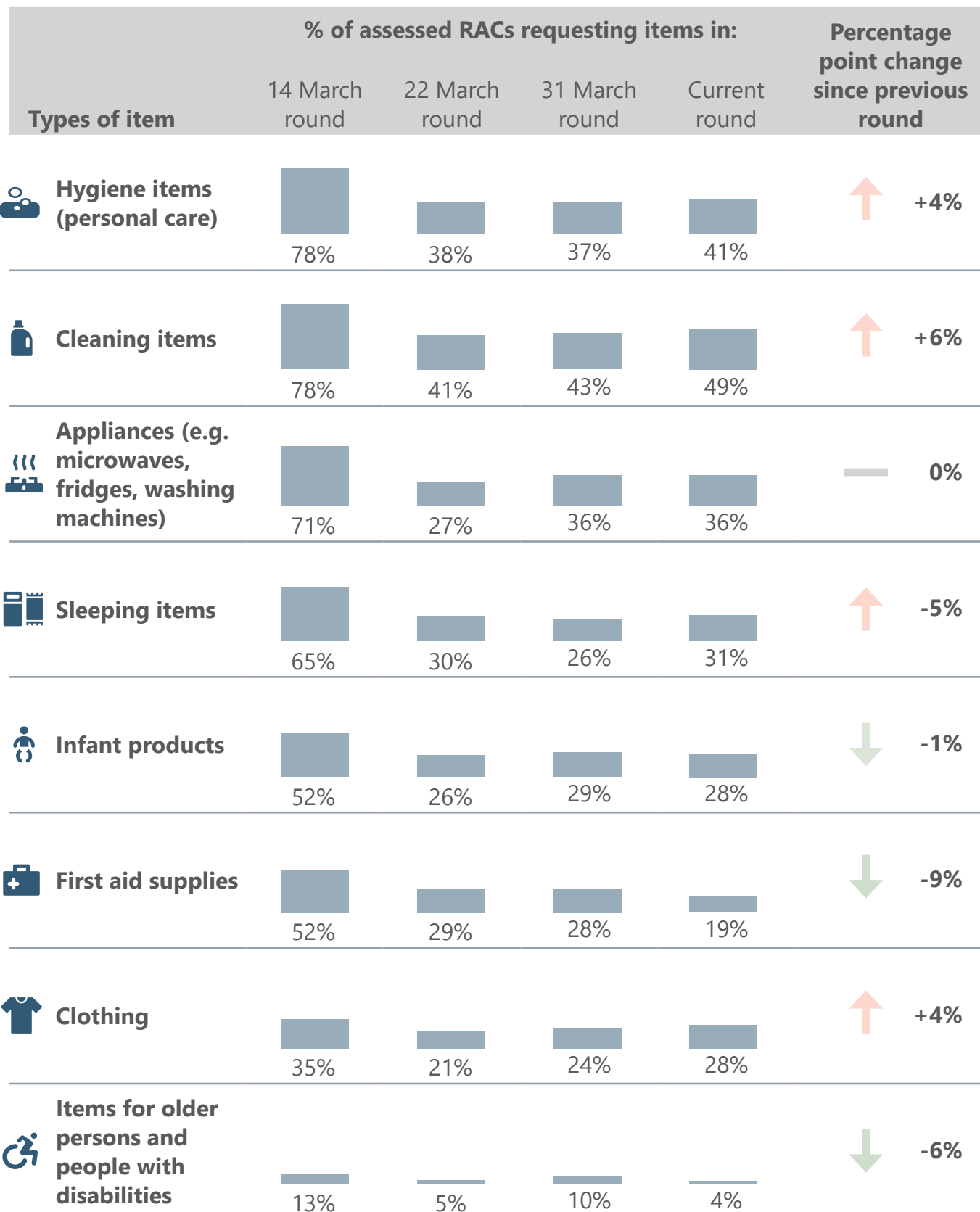
People hosted in RACs since receiving approval to open



Source: ANAS, Registry of Refugee Accommodation Centres, 06.04.2022

Most Requested Items from RACs

Below is an overview of items most frequently requested by RACs during structured phone interviews with KIs. It should be noted that in view of the high rotation of refugees going in and out of RACs, the requested items are based on ongoing requirements for normal RAC functioning. **These requests do not necessarily mean RACs do not currently have the requested items. Rather, these requests may be based on forward looking considerations about maintaining steady supplies. Hot meals have been distributed by the government, UN agencies, NGOs and local organisations, and no major shortages of essential food items have been reported.**

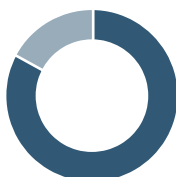


Infrastructure-Level Data

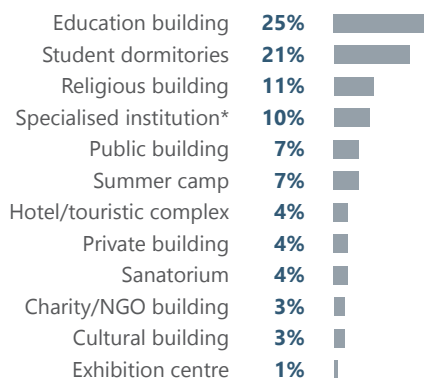
Building Information

% of assessed RACs by type of centre

Long stay centres (>72 hours) **83%**
Short stay centres (<72 hours) **17%**



% of assessed RACs by type of building



*Specialised institutions include facilities normally used to provide services for people with disabilities or mental health issues

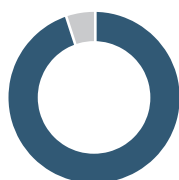
6% of assessed RACs reportedly need to return to their previous usage, in the following timeframe:

Less than 1 month **3%**
1 to 2 months **1%**
3 to 6 months **1%**
Not sure of timeframe **1%**



564 Number of people involved in RAC activities at the assessed RACs (employed staff, volunteers, etc)
8 per centre on average

Internet and Connectivity



In **95%** of assessed RACs, centre managers have access to the internet



In **91%** of assessed RACs, there is free internet access for hosted people

Access to Education Services



In **90%** of assessed RACs, hosted children reportedly have access to education services

Raionul-Level Information

Raionul	#RACs	Capacity	People hosted	Spaces available	Capacity level
Anenii Noi	3	106	74	32	70%
Balti	4	342	244	98	71%
Basarabasca	2	85	38	47	45%
Briceni	1	25	12	13	48%
Cahul	4	416	179	237	43%
Calarasi	2	100	64	36	64%
Chisinau	33	4,382	1,749	2,633	40%
Comrat	2	190	77	113	41%
Criuleni	2	350	126	224	36%
Donduseni	1	60	57	3	95%
Drochia	2	40	19	21	48%
Dubasari	1	228	127	101	56%
Edinet	3	112	100	12	89%
Falesti	1	80	78	2	98%
Floresti	1	40	10	30	25%
Glodeni	2	102	48	54	47%
Hincesti	3	400	160	240	40%
Ialoveni	3	265	180	85	68%
Leova	1	25	5	20	20%
Nisporeni	1	100	56	44	56%
Ocnita	1	60	8	52	13%
Orhei	4	200	109	91	55%
Rezina	1	44	0	44	0%
Riscani	2	60	52	8	87%
Singerei	1	90	79	11	88%
Soroca	2	120	62	58	52%
Stefan Voda	1	115	46	69	40%
Straseni	2	200	56	144	28%
Taraclia	3	75	38	37	51%
Telenesti	3	118	81	37	69%
Ungheni	3	100	47	53	47%

Source: ANAS, Registry of Refugee Accommodation Centres, 06.04.2022