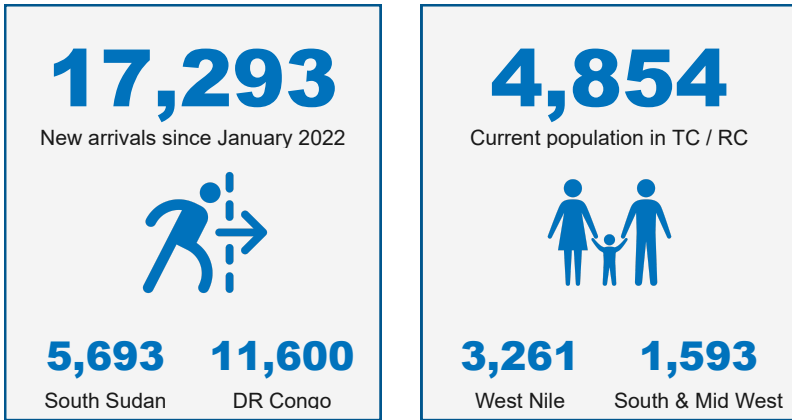


Key figures and narrative analysis



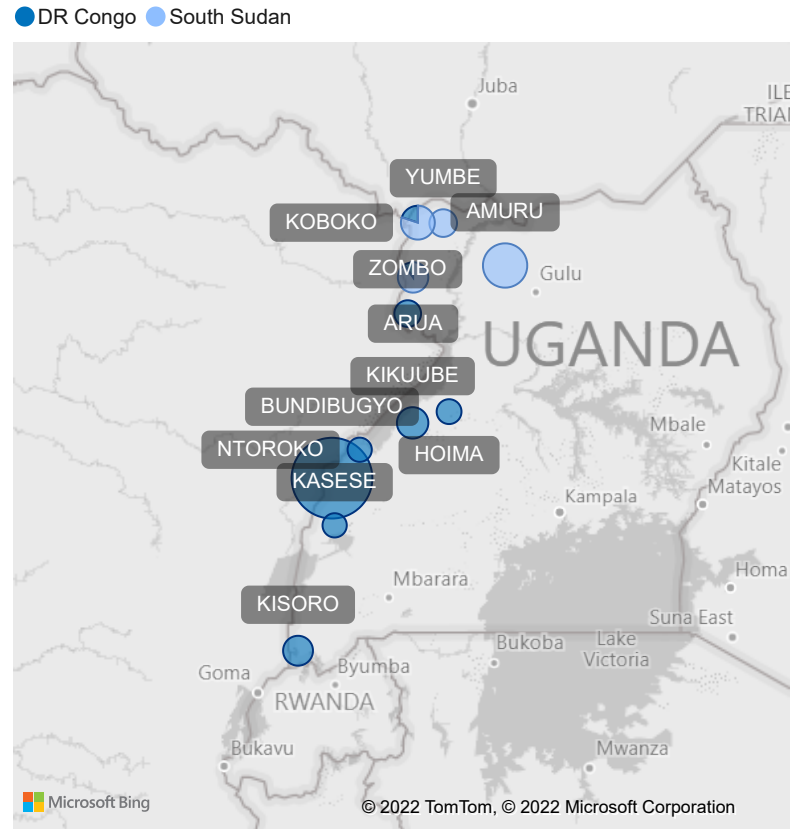
Uganda experienced a high number of daily new arrivals through the South Western borders in Bundibugyo district in February.

Although the rate of arrivals has decreased somewhat, those who are transported from collection points to Bubukwanga come with all their luggage signalling no intention to return to DRC in the near future.

The new arrivals are not limited to the South West. The West Nile region has been receiving new arrivals as well, the arrival rates in March so far are similar to those in South West.

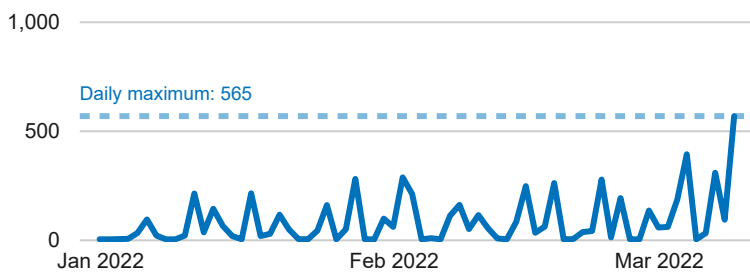
A sudden influx of new arrivals at Omugo Quarantine Centre on 9 March has stretched its capacity. The centre is overcrowded and can not take any more new arrivals.

New arrivals by district of entry



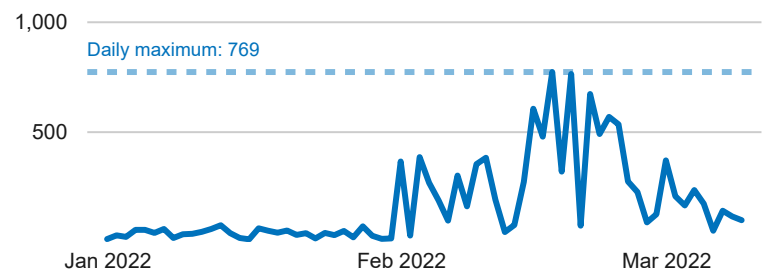
Note: New arrivals by district of entry are counted through Level 1 registration

New arrivals from South Sudan by district of entry



District	January	February	March	Total
AMURU	969	1,602	526	3,097
ARUA	10	308	553	871
KOBOKO	453	232	509	1,194
YUMBE	209	238	84	531
Total	1,641	2,380	1,672	5,693

New arrivals from DR Congo by district of entry



District	January	February	March	Total
ARUA	6	39	50	95
BUNDIBUGYO	602	7,340	775	8,717
HOIMA		101		101
KASESE	5	4		9
KIKUUBE		532	581	1,113
KISORO	346	411	117	874
KOBOKO	98	199		297
NTOROKO		8		8
ZOMBO	3	379	4	386
Total	1,060	9,013	1,527	11,600

Status of Transit / Reception Centres and Collection Points in West Nile

Location	Capacity	Population	New arrivals*	Relocated*
Goboro TC	1,000	94	552	
Imvepi RC	700	246	875	649
Ocea RC	800	620	2,389	1,955
Omugo QC	800	1,578	4,085	
Palabek CP	400	723	1,892	1,110
TOTAL				
	Capacity	Population	Relocated*	
	3,700	3,261	3,714	

Status of Transit / Reception Centres in South & Mid West

Location	Capacity	Population	New arrivals*	Relocated*
Bubukwanga TC	1,200	116	7,942	
Mahani RC	1,000	1,198	7,536	6,338
Nyakabande TC	825	181	886	769
Sweswe RC	1,000	98	1,441	1,343
TOTAL				
	Capacity	Population	Relocated*	
	4,025	1,593	8,450	

Note: New arrivals and relocations are cumulative from January 2022 to date
Note: Refugees at Goboro TC relocate to Imvepi RC after quarantine
Note: Some new arrivals at Palabek CP are unregistered refugees from Palabek
Note: Refugees at Omugo QC relocate to Ocea RC and Imvepi RC for registration

Note: New arrivals and relocations are cumulative from January 2022 to date
Note: No information for Sebagoro TC is shown as it is undergoing construction
Note: Refugees at Bubukwanga TC relocate to Mahani RC and Sweswe RC
Note: Refugees at Nyakabande TC relocate to Kabazana RC