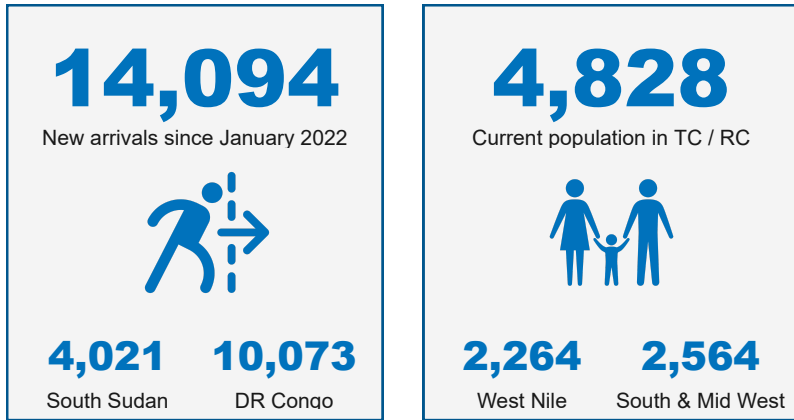


Key figures and narrative analysis

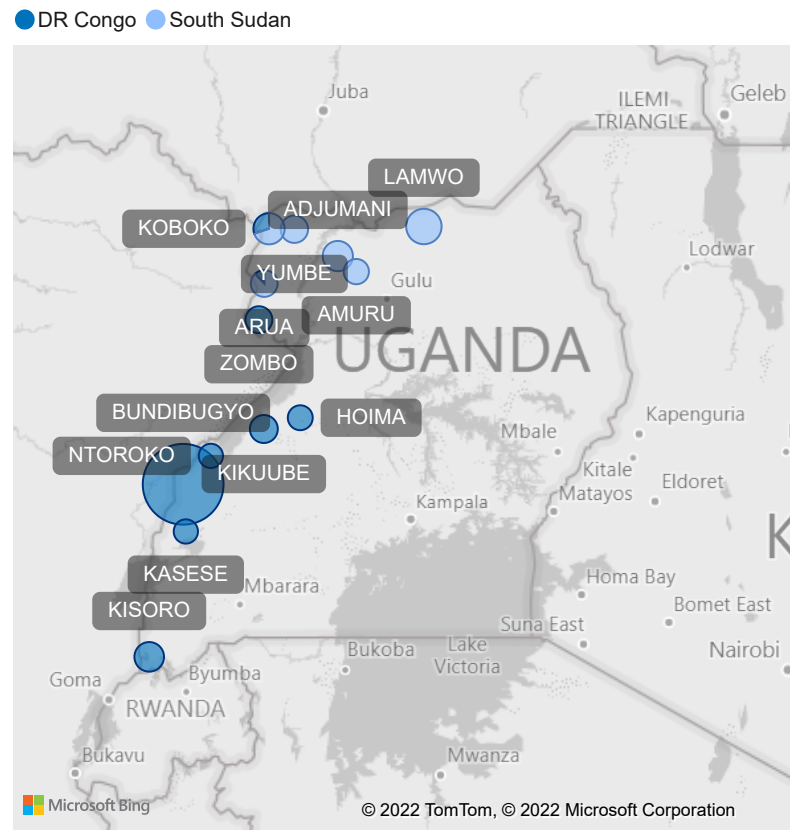


Uganda continues to experience a high number of daily new arrivals through the South Western borders in Bundibugyo district.

The main reason for flight is insecurity in their home areas. Those who are transported from collection points to Bubukwanga come with all their luggage signalling no intention to return to DRC in the near future. The new arrivals are not limited to the South West. The West Nile region has also been receiving new arrivals, but at a lower rate.

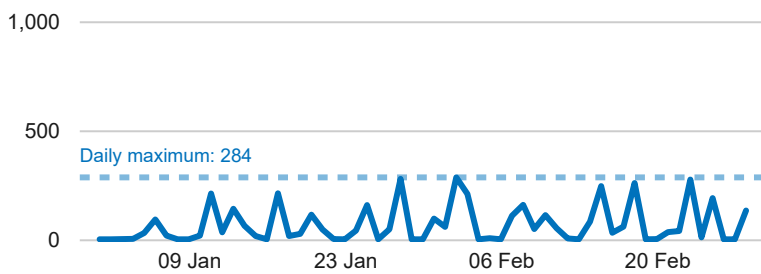
Despite efforts to quickly move people from Transit Centres to Reception Centres, Bubukwanga Transit Centre continues to exceed its capacity of 1,200 individuals. Palabek Reception Centre is also over capacity.

New arrivals by district of entry



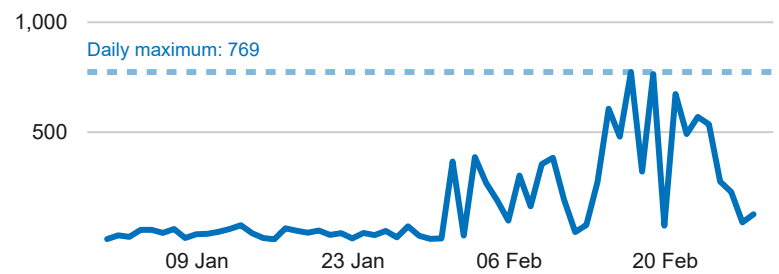
Note: New arrivals by district of entry are counted through Level 1 registration

New arrivals from South Sudan by district of entry



District	January	February	Total
ADJUMANI	394	456	850
AMURU	45	103	148
ARUA	10	308	318
KOBOKO	453	232	685
LAMWO	530	1,043	1,573
YUMBE	209	238	447
Total	1,641	2,380	4,021

New arrivals from DR Congo by district of entry



District	January	February	Total
ARUA	6	39	45
BUNDIBUGYO	602	7,340	7,942
HOIMA		101	101
KASESE	5	4	9
KIKUUBE		532	532
KISORO	346	411	757
KOBOKO	98	199	297
NTOROKO		8	8
ZOMBO	3	379	382
Total	1,060	9,013	10,073

Status of Transit / Reception Centres in West Nile

Location	Capacity	Population	New arrivals*	Relocated*
Goboro TC	1,000	82	468	
Imvepi RC	700	639	804	178
Ocea RC	800	253	1,756	1,689
Omugo QC	1,500	556	2,734	
Palabek RC	400	734	1,601	809
TOTAL	4,400	2,264	7,363	2,676

Note: Refugees at Goboro TC relocate to Imvepi RC after quarantine

Note: Refugees at Omugo QC relocate to Ocea RC and Imvepi RC for registration

Status of Transit / Reception Centres in South & Mid West

Location	Capacity	Population	New arrivals*	Relocated*
Bubukwanga TC	1,200	1,963	7,942	4,237
Nyakabande TC	825	601	766	287
TOTAL	2,025	2,564	8,708	4,524

Note: New arrivals and relocations are cumulative from Jan 2022 to-date

Note: No information for Sebagoro TC is shown as it is undergoing construction