

The majority of cash beneficiaries are women and children, with adult women making up 48% of those enrolled, and children making up 47% (24% female and 23% male). Older persons make up only 6% of the enrolled population, with older women being 5%. The average family size is relatively small at 2.1, however many people are arriving with extended family who are enrolled in separate family groups.

Around 24% of enrolled persons have specific needs. Seventeen per cent are single parents without family support. Five per cent are women at risk. Two per cent are persons with disabilities. Around 44% of children with specific needs are separated or unaccompanied.

Most enrolled persons arrived in late February and early March, and reside in the Mazowieckie district which includes the Warsaw area.

### Biodata

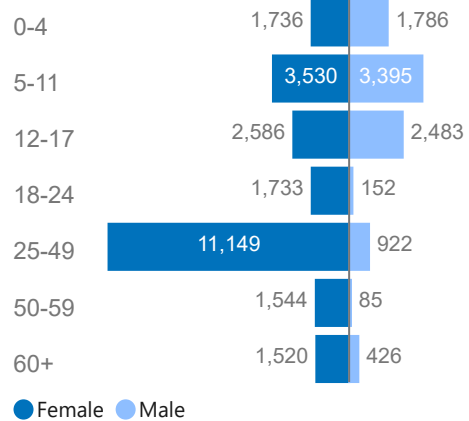
# of enr. households      # of enrolled individuals

**15,506**      **33,052**

Avg. household size      # of enrolled (biometric)

**2.13**      **28,716**

# of enrolled individuals by age



### Specific Needs

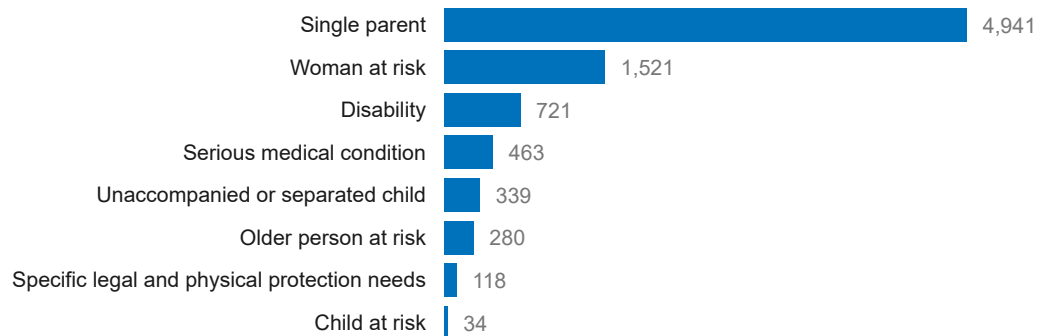
# of enrolled individuals with specific needs

**7,828**

# of enrolled children with specific needs

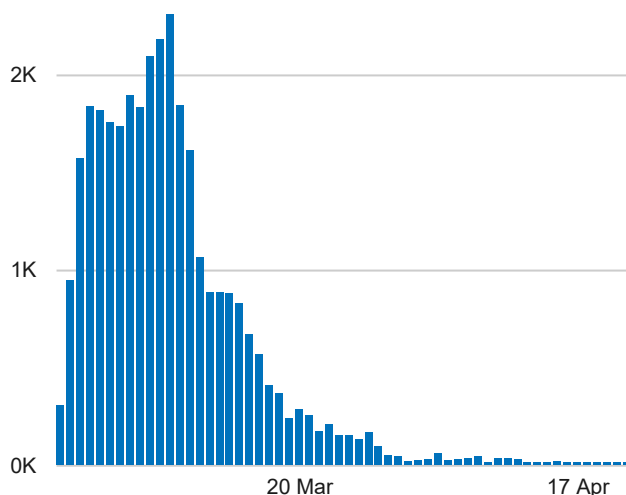
**765**

# of enrolled individuals with specific need (by type)



### Arrival Date

# of Registered PoC by Arrival Date



### Top 5 Locations in Poland

# of enrolled families by region

