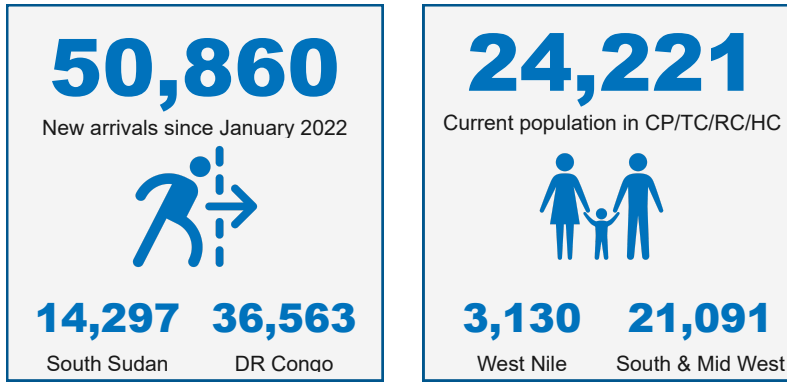


Key figures and narrative analysis



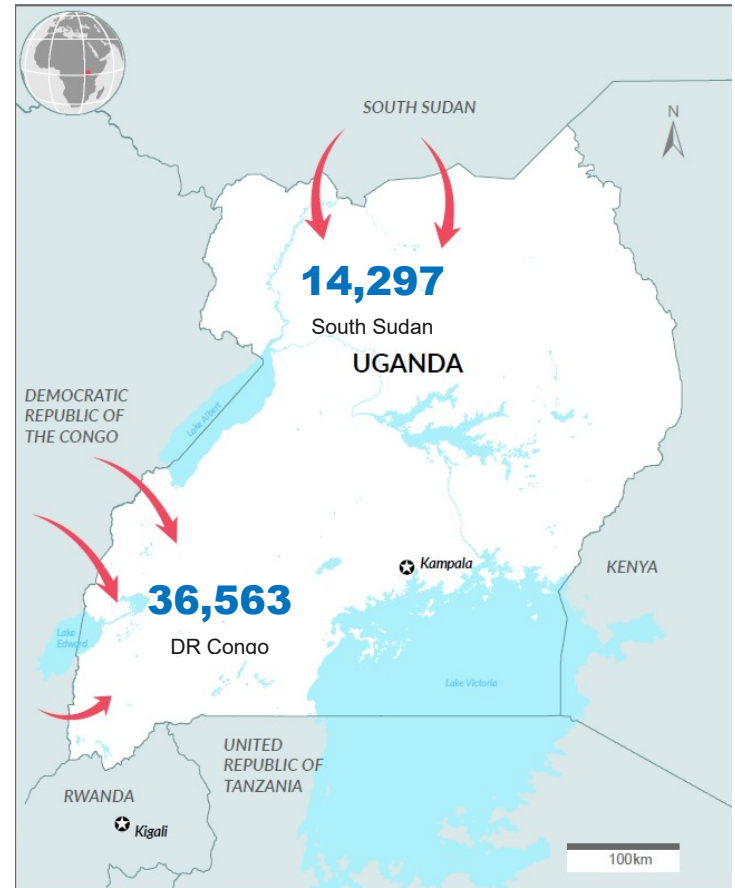
Uganda continues to receive new arrivals from the Democratic Republic of Congo (DRC) and South Sudan, through the Southwestern and Northern borders.

The border entry points of Bunagana, Nteko and Busanza have remained calm throughout the reporting period (06 - 12 May). In the reporting period, 879 refugees were relocated to Nakivale, as a result 17,468 new arrivals remained at the holding centre and transit centre as of 12 May 2022.

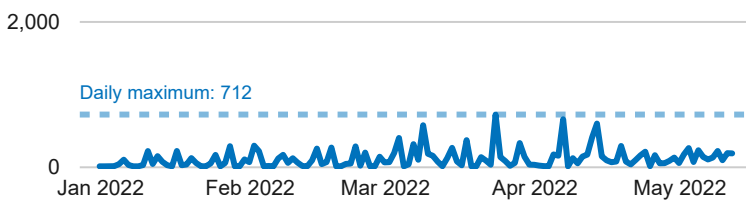
There were 33 spontaneous departures from Bwera holding area bringing the total number down to 851 individuals from 884.

The transit and reception centers across the country are 15% over capacity for this reporting period. The total holding capacity of 21,020 is holding 24,221 individuals.

Note that this dashboard is only showing figures for new arrivals who have undergone Level 1 registration, it therefore does not include those who are staying along the border or with host community.



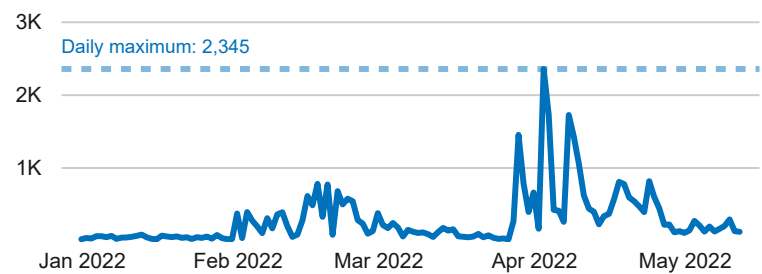
New arrivals from South Sudan by district of entry



District	January	February	March	April	May	Total
AMURU	969	1,602	1,866	1,606	1,130	7,173
ARUA	10	308	559	151		1,028
KOBOKO	453	232	1,401	512	286	2,884
LAMWO			533	1,669	312	2,514
YUMBE	209	238	172	70	9	698
Total	1,641	2,380	4,531	4,008	1,737	14,297

Note: New arrivals by district of entry are counted through Level 1 registration

New arrivals from DR Congo by district of entry



District	January	February	March	April	May	Total
ARUA	6	39	55			100
BUNDIBUGYO	602	7,340	1,109	246	83	9,380
HOIMA		101				101
KANUNGU			6			6
KASESE	5	4		1,182	25	1,216
KIKUUBE		532	1,357	485	196	2,570
KISORO	346	411	3,014	17,040	1,622	22,433
KOBOKO	98	199		2	26	325
NTOROKO		8				8
ZOMBO	3	379	32	10		424
Total	1,060	9,013	5,573	18,965	1,952	36,563

Status of Transit / Reception Centres and Collection Points in West Nile

Location	Capacity	Population	Arrivals*	Settled*
Goboro TC	1,000	24	702	
Imvepi RC	700	114	1,836	1,579
Kuluba TC	1,200	644	366	
Lokung CP	560	1,014	2,164	978
Nyumanzi RC	2,000	752	1,386	653
Ocea RC	800	582	5,033	4,294
Omugo QC	1,500	0	5,594	
Palabek CP	200	0	3,546	3,498
Total capacity	7,960	3,130	11,002	

* Figures for arrivals and settled are cumulative from January 2022 to date
Note: Refugees at Goboro TC relocate to Imvepi RC after quarantine; some new arrivals at Palabek CP are unregistered refugees from Palabek; refugees at Omugo QC relocate to Ocea RC and Imvepi RC for registration

Status of Holding / Transit / Reception Centres in South & Mid West

Location	Capacity	Population	Arrivals*	Settled*
Bubukwanga TC	1,200	29	8,598	
Bwera HC	260	851	1,207	
Kabazana RC	1,200	1,736	4,787	2,010
Kagoma RC	1,000	768	2,457	1,448
Mahani RC	1,000	154	7,989	7,940
Nyakabande TC	7,200	17,468	22,916	
Sebagoro TC	200	0	2,575	
Sweswe RC	1,000	85	1,419	1,343
Total capacity	13,060	21,091	12,741	

* Figures for arrivals and settled are cumulative from January 2022 to date
Note: Refugees at Sebagoro TC relocate to Kagoma RC; refugees at Bubukwanga TC relocate to Mahani RC and Sweswe RC; refugees at Nyakabande TC relocate to Kabazana RC; figures for Nyakabande TC include those for the holding area