

Rwanda

February 2022

HIGHLIGHTS

A. Rwanda hosted a total of 127,269 refugees and asylum seekers at the end of January 2022. The population of concern included mainly persons from the Democratic Republic of the Congo (60.65%) and Burundi (39.02%).

B. The National Statelessness Taskforce started the implementation of a training and awareness-raising exercise on statelessness for over 3000 government officials at District, Sector and Cell levels.

C. On 21st of February the Regional Director for EHAGL visited to Rwanda, as part of a mission to meet with the Ministry of Foreign Affairs and International Cooperation and visit and meet with the UNHCR Rwanda staff on 22 February 2022.

KEY INDICATORS

19

Cases of COVID-19 were identified among refugees in February 2022. 1,907 cases identified since the beginning of the pandemic. So far 64.4% of eligible refugees have received second vaccination dose.

188

Refugees departed for resettlement and complementary pathways in February 2022. A total of 204 departed thus far in 2022.

467

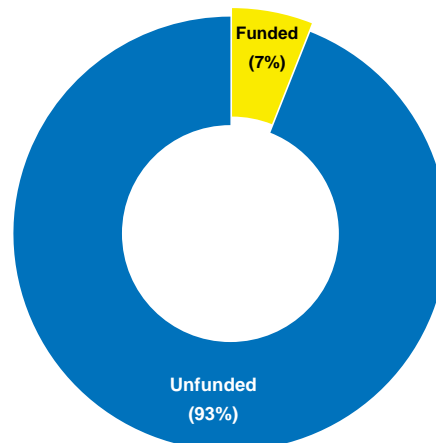
 (84 from Rwanda & 383 from Uganda)

Burundian refugees were repatriated in February 2022. A total of 29,678 Burundians have thus far been repatriated

FUNDING (AS OF 28 FEBRUARY 2022)

USD 86.8 million

were needed for regular programmes for the refugee situation in Rwanda.

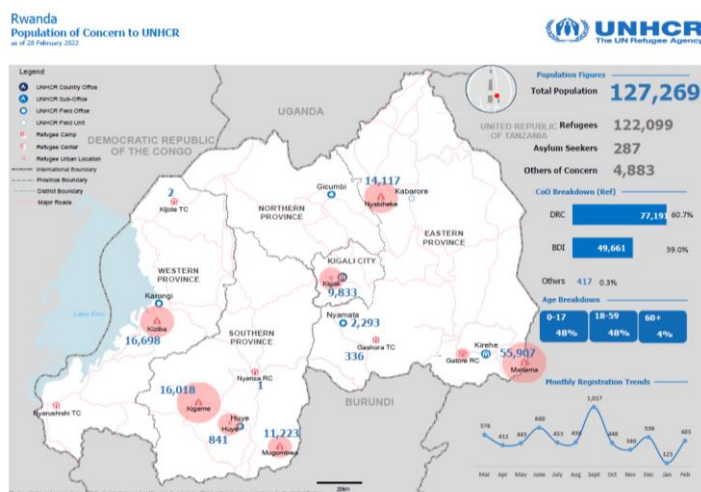
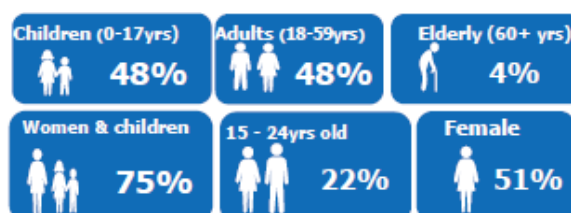


POPULATION OF CONCERN

MONTHLY POPULATION TRENDS | Mar 2021 - Feb 2022



DEMOGRAPHICS



Rwanda Refugee Response – Burundian and Congolese Response

Achievements & Highlights



Connected Learning Project, implemented by UNHCR and partners – ADRA and WVI, helps refugee and host students to access information technology tools and improve the quality of their education. Rwanda @UNHCR/Eric Didier Karinganire



PROTECTION

- 62 newborn babies (29 male and 33 female) were registered in Kigeme (21) and Mugombwa (41), while 109 proof of registration documents were issued and/or replaced in Kigeme (34), Mugombwa (60) and Huye urban (15).
- In Kiziba refugee camp, 33 children were registered under regular birth registration while three (3) were registered under late birth registration procedures at Rwankuba sector office.
- In Kigeme, the GBV partner received ten (10) new cases that include one (1) case of marital rape, one (1) case of physical assault, five (5) cases of denial of resources, and three (3) cases of psychological abuse.
- In Karongi, the GBV partner received 6 new cases (2 rape, 2 emotional abuses, 1 child defilement and 1 physical assault) and follow-up was conducted for 34 cases. 32 cases are currently under management, while 15 cases were closed during February.
- Four (4) GBV cases (1 rape, 1 child defilement, 1 Denial of resources, and 1 psychological assault) were reported in the Nyahiheke refugee camp and referred for appropriate support. 23 cases are currently open and (seven) 7 cases were closed at the end of February 2022.
- In Mugombwa, seven (07) new cases (01 cases of child defilement, 01 sexual assault, 01 denials of resources and 04 psychological / emotional abuse) were received. All cases have received appropriate psychosocial support, follow-up, and referral to services as in line with the survivor-centered approach.
- 761 persons with disabilities were assisted in the Mahama Refugee Camp.
- 15 new GBV cases were reported at the Mahama refugee camp, these include three (3) child defilements, two (2) physical assaults, one (1) denial of resources, and nine (9) emotional abuse incidents.
- 36 existing GBV survivors from the Nyabiheke refugee camp (RC) were provided psychosocial support through counselling and seven (7) survivors received materials support.
- In the Nyabiheke (RC) 30 individuals (16 male and 14 female) with visual impairment including five (5) refugees (2 male and 3 female) and 25 members of the host community (14 male and 11 female), received assistive devices (white
- 84 Burundian PoCs in Rwanda were assisted in their repatriation to Burundi, and 383 Burundian PoCs from Uganda were assisted in their repatriation to Burundi as well.
- 20 urban (Burundian) cases with medical needs in Bugesera were assisted and 8 protection cases were followed including 2 for durable solutions.
- One (01) household of five (05) individuals were relocated to MAHAMA after their asylum claim was approved by the Status Determination committee and they were granted refugee status in Rwanda.
- 296 newborn babies, comprised of 143 male and 153 female, were registered from the Mahama refugee camp.
- 15 persons of concern with various protection risks were interviewed and counselled at the Kiziba refugee camp.
- On the 17th of February 2022, 134 Rwandan returnees were relocated by Karongi field office from the transit center to their areas of origin. The same day, 73 returnees were received in Rubavu from Goma and 103 returnees received in Rusizi from Bukavu, all returnees were immediately transported to Kijote Transit Centre

canes). 15 individuals (7 male and 8 female) with eye problems also benefited from specialized health care at Kabgayi Eye hospital.

- In Nyabiheke, 114 children (69 male and 45 female) with disabilities, comprising of 92 children from the refugee community and 22 children from the host community were provided with Community Based Rehabilitation services.
- 104 (8 male and 96 female) parents/caregivers in Nyabiheke, including 92 (8 male and 84 female) from the refugee community and 12 from the host community, were trained on management of cerebral palsy aiming at increasing their capacity to support children with disabilities.
- 410 (69 male and 341 female) persons with mental health and psychosocial were provided with psychotherapeutic services in the form of sharing groups, healing groups, individual psychotherapy, and home visits in Nyabiheke.
- Four (4) new child neglect cases were reported and supported at the Nyabiheke refugee camp. Currently, there are a total of 13 Child Protection cases. 15 BIAs were also conducted for 7 girls, 8 boys in February. And 135 separated children (67 girls, 68 boys) were visited at home by the community volunteers to monitor their wellbeing.
- Five (5) new Child Protection (CP) cases (2 boys and 3 girls) were received in the Kigeme refugee camp, while five (5) BIAs for children with protection concerns were completed and recommendations/referrals made based in their best interest. 23 (13 boys and 10 girls) existing CP cases were followed up through counselling sessions, home visits, psychosocial support, and provision of materials.
- In Kiziba refugee camp, 67 individuals with disabilities received basic functional rehabilitation services, while 50 home visits were conducted to persons with specific needs including elderly persons, parents of children and adults with severe disabilities to identify their special needs to ensure their inclusion and participation in the community, and 133 individuals were also provided with mental health and psychosocial support.
- In Mugombwa, 5 new Child protection cases (2 boys and 3 girls) were received and managed. Seven (7) BIA (5 boys and 2 girls) were initiated and completed. 17 existing cases (7 boys and 10 girls) were also followed-up through case management and provision of psychosocial support and material support.

- Through the targeted hotlines and protection reception desks, 257 communications (116 Kigeme and 141 Mugombwa) were recorded. 208 communication was in person and 49 were through the hotline. Six (06) targeting awareness and sensitization activities regarding eligibility criteria and appeal mechanism also took place in Kigeme and Mugombwa, where 450 PoCs were reached.

DURABLE SOLUTIONS

- 109 refugees were submitted for resettlement at the Mahama refugee camp. 43 refugees also departed for resettlement.
- 103 refugees were submitted for resettlement as part of the durable solutions sought for refugees from the Kiziba refugee camp. 68 refugees departed for resettlement during the month of February.
- 114 refugees were submitted for resettlement from the Nyabiheke refugee camp. 47 refugees also were resettled from Nyabiheke during February.

EDUCATION

- In Kigeme, 5,651 students were registered and attended schools during February 2022. The school attendance rate for Early Childhood Development (ECD) was an average of 97.9%, while for primary and secondary, it was 96.7% and 96% respectively.
- In Mugombwa, 4,872 students registered and were attending school during the month of February. The school attendance rate for Early Childhood Development (ECD) was an average of 85.6%, while for primary and secondary, it was 97.3% and 94.5% respectively.
- In Nyabiheke, the school attendance was rated 92.3% at Early Childhood Development (ECD), 93.8% at Primary, and 92.9% at Secondary during the reporting period.
- In Nyabiheke, the ECD school feeding program which had been on hold due to lack of briquettes, resumed with the availability of 3000kgs of briquettes provided by UNHCR.
- Facemask was distributed to 2,259 pupils in primary and 850 to secondary students in Kigeme.
- Distribution of scholastic materials and school uniforms was completed for all secondary school students in Nyabiheke, and a total of 1463 out of

1567 were served. School uniforms for primary were given to 2694 pupils out of 2701 that are registered. 770 school pupils in Lower primary were also given school bags.

- Payment was made for school fees for 130 students in schools of excellence in Nyabiheke, and the national exam registration fees was paid for Primary 6, Secondary 3, and Secondary 6.
- In the Mahama refugee camp, 5,143 children at pre-school age are enrolled in early childhood education, 7,830 children at primary school age are enrolled in primary education, 3,118 children at secondary school age are enrolled in secondary education, and 305 children with disabilities are enrolled in school.
- A total of 14,440 primary school students have integrated in national schools, while 7,193 secondary school students have also integrated in national schools from the Mahama camp.



HEALTH

- 4,071 persons approached the health centre in Kigeme, Mugombwa and Nyanza Transit Centre, out of which, 224 were referred for secondary and tertiary health care. 16 deaths were also recorded in Kigeme (15) and Mugombwa (1).
- 3150 persons (3029 new cases and 121 old cases) received primary health care services in the Nyabiheke RC. Among them 243 were from the host community (115 male and 128 female). 116 patients (53 male and 63 female) were transferred for further medical interventions. From the 116, 77 of the patients were transferred to Ngarama District Hospital, while 39 were transferred to Kigali for tertiary referral hospitals.
- 10,923 persons received primary healthcare services at the health post in the Mahama refugee camp, while 283 persons were referred to secondary and tertiary care.
- In Mahama Camp, 556 COVID-19 tests were conducted, and all were negative. 184 COVID-19 vaccinations, 1st and 2nd dose, as well as booster shots were administered during the reporting period.
- 116 patients (53 males and 63 females) were transferred for medical needs from the Nyabiheke refugee camp. Of the said patients, 77 were transferred to Ngarama District Hospital (new cases were the highest with 57%) while 39 were referred to Kigali tertiary hospitals (the repetition cases were the highest with 90%).
- In Kigeme, Huye urban and Mugmbwa, 98 (50 male and 48 female) refugees with specific needs i.e., 35 refugees (20 male and 15 female) with Physical disabilities, 20 refugees (9 male and 10 female) with multiple disabilities, nine (09) refugees (5 male and 4 female) with intellectual disabilities and three (3) refugees (2 male and 1 female) with mental health related issues have received basic Functional rehabilitation services and early detection of impairments.
- 12 refugees (5 male and 7 female) with disabilities who had limited access to specialized health care have received ophthalmology medical care service assistance at Kabgayi Eye Unit which included surgical operations and provision of eyeglasses.
- 48 refugees (26 male and 22 female) with mental health issues including 19 new cases were provided therapeutic sessions which aimed to help get rid of psychological problems and promote resilience and adaptive coping mechanism.
- 4,010 individuals (3,250 refugees and 760 from host communities) received medical and health services. 77.6% are normal health issues related to urinary infection (URTI) in Kiziba refugee camp. While 136 patients (104 refugees and 32 host community) were admitted to the Kiziba health center. The causes of admission were: 14 LRTI (pneumonia), 12 Fever of unknown origin one (1) malaria confirmed, malaria confirmed, two (2) Injury/accident, 28 others and 79 Obs & Gynecological problems.
- 107 referrals (100 refugees and 7 from host communities) from Kiziba were made to Kibuye referral hospital (87) and to different referral and regional hospitals (20).
- 5 deaths occurred in Kiziba in this reporting period. Noting that crude mortality rate is at 0.05/1000/month. The U-5 mortality is 0.2/1000/month.
- 1,435 pupils from Umubano primary school and College Amahoro in Kiziba, whose age range from 12-17 years received second dose of COVID-19 provided by RBC medical in Rwankuba sector.



FOOD SECURITY AND NUTRITION

- In Mahama refugee camp, 2,986 children aged 6 to 23 months were supported with Blanket Supplementary Feeding Program (BSFP), while 6,211 persons in need have access to nutrition programmes.
- During February, in Mahama camp, six (6) Mosquito nets, 13 jerry cans: six (6) pieces of Kitchen sets, 13 Sleeping mats, 13 Blankets were distributed to six (6) households; eight (8) pieces of bathing soap were distributed to four (4) households; 124 cartons of cloths composed 4,390 pieces released for distribution to individuals based on vulnerability status; 24 pieces of sanitary pads were distributed to 24 women and girls; and 369 facial masks distributed to repatriation cases.
- On 11th February 2022, UNHCR released CBI (Cash Based Intervention / cash for energy for the month of February) to 2,625 registration groups eligible for blanket assistance in Nyabiheke camp. On 16th February, WFP (World Food Programme) released CBT (cash-based transfers / cash for food) a total amount of Rwf94,112,100 to 13,685 refugees comprised of 2,446 registration groups of categories one and two that are eligible for targeted assistance.



WATER AND SANITATION

- Supply of potable water was maintained at 14.3 l/p/d, 20 l/p/d and 23 litres per person per day, respectively in Kigeme RC, Nyanza TC, and Mugombwa RC camps.
- Supply of hand soap was also provided to Kigeme RC, Nyanza TC, and Mugombwa RC camps at 1200, 30 and 638 litres, respectively.
- In Nyabiheke refugee camp, 12.4 liters of potable water per person per day was supplied during February. 400liters of liquid soap were also provided to all handwashing facilities at public places.
- 180 litres of liquid soap were distributed at all public hand washing stations in the Kiziba Camp.
- In Kiziba refugee camp, water supply was at 32.4 litres per person per day as compared to the standard of 20l/p/d.

- An average of 1,236 m3 of water was supplied to the Mahama camp, while an average of 100 m3 water were supplied to the host community.

SHELTER, INFRASTRUCTURES, AND NFI

- 12 shelters were rehabilitated in Kigeme refugee camp, and seven (7) shelters were rehabilitated in the Mugombwa refugee camp.
- 66 families from Kiziba refugee camp received construction materials for rehabilitation of their shelters.
- Kigeme schools received 1,200kg of briquette from the Mugombwa refugee camp store.
- Huye Field Office received 60,240 pieces of sanitary soap for general distribution for Kigeme refugees.
- 231 families in need were supported with non-food related items (NFIs), including 100 buckets of 10L, 30 bedsheets, 30 cover-beds, and 91 plastic and large round basin, and 5 mattresses in Kiziba refugee camp.
- 19 structures / shelters were repaired at the Mahama refugee camp.
- Through the bank registration exercise conducted in Mugombwa and Kigeme RC in February, in Mugombwa, 1,885 expired cards were renewed/replaced, while in Kigeme, all **48** expired cards were replaced. The aim of the exercise was to renew expired bank visa cards for PoCs whose visa cards had expired in 2021.



ENERGY AND ENVIRONMENT

- On 22nd February 2022, MINEMA, UNHCR, the Refugee Executive committee and different partners implementing activities in KIZIBA refugee camp conducted the public work "UMUGANDA" with the aim of helping the refugee community living in Q3 to prevent erosion caused by the rainwater on the drainages surrounding their shelters.
- 10,925 Kg of briquette was used as part of the school feeding program in Kigeme.
- In Mugombwa refugee camp, 2,628 cylinders (15,768kg) LPG/gas was distributed to refugees.

- Kigeme schools received 1,200kg of briquette from the Mugombwa refugee camp.
- A new supply of 20,000kg of briquette was delivered to Mugombwa schools for feeding program.
- The Huye Field Office received 60,240 pieces of bathing soap for general distribution for Kigeme refugees.
- A total of 6,000 seedlings (2,000 avocados, 1,500 mangoes and 2,500 mixed crossed citrus and oranges) were planted in the Mugombwa camp and in the school.
- In Kigeme 4,500 trees were fertilized, and 4,100 tree plants (2,000 avocado, 1,200 eucalyptus maiden, 400 crossed citrus and 500 crossed orange seedlings) were received for planting on 28th February.
- In the Mahama refugee camp 102 avocados trees were planted, 11,510 seeds were planted into plastic bags for nursing, and 15,605 cylinders equivalent to 93,630kgs were refilled and exchanged with empty cylinders for persons of concern and 2,931kgs for school feeding to prepare hot meals for school feeding, and for repatriation activities.



LIVELIHOODS, COMMUNITY EMPOWERMENT AND SELF-RELIANCE

- In Kigeme the Mushishito beneficiary screening was completed. Plot distribution for farmers is ongoing. 1,546 Plots were demarcated thus far, 457 plots were distributed to Refugees farmers and 900 plots to host community farmers.
- In Kigeme, through the Poverty Alleviation Coalition (PAC) Project 327 beneficiaries from the refugee and host communities were trained on BCC/Empowered World View (Hinduka wire) and life skills. 96 small business owners and technical volunteers were trained on income-generating methods (business planning and management). 18 youth, former vocational training beneficiaries, will receive start-up tool kits. Another 50 youth will benefit from the capacity-building training on vocational skills. Under Inkomoko project, a total of 122 clients have signed for loan contracts.
- In Mugombwa, under the Misizi project, a general assembly of the Icyerekezo cooperative was organized, and farmers were mobilized for

discussion on cooperative development and sustainability.

- In Mugombwa, through the PAC project, 500 beneficiaries were identified. 245 beneficiaries benefited from life skills (Hinduka wigire). 17 youths were shortlisted for vocational training and 50 for capacity-building training. 32 beneficiaries were trained on income-generating methods and skills. A total of 38 Inkomoko entrepreneurs have signed loan contracts.
- In Nyabiheke refugee camp, two (2) trainings were organized by Caritas Rwanda through PAC (Poverty alleviation coalition) project. 800 (550 refugees and 250 members of the host community) were trained for five days (from 7th to 11th Feb) on 'Empowered world view with main purpose to start changing mindsets towards business making'. 550 refugees (311 female and 239 male) were trained for 5 days (from 14th to 18th Feb 2022) on internal saving and lending scheme.
- In Nyabiheke, 45 youth (25 female and 20 male) were selected to be supported in TVET and sent to schools for trainings, including Hair dressing; Mechanics and driving; beauty salon; tailoring; welding, etc.
- In Kiziba, one Savings and Internal Lending Communities (SILC) group started the second SILC cycle. They shared out a total amount of 3,866,900Rwf including 2,874,000 Rwf of savings and 992,900 Rwf of profit accumulated.
- In Mahama refugee camp, 1,562 persons were provided with support to expand or formalize their businesses, 464 persons were provided with vocational trainings, 14,314 persons have been employed or self-employed (engaged in income generating activities), while 1,381 persons received entrepreneurship/business training.

MISSIONS AND VISITS

- On 18th February 2022, MINEMA Minister visited Kijote transit centre. The Honourable Minister and UNHCR Head of Office for the Karongi Office welcomed the 176 Rwandan returnees. The Honourable Minister emphasized on the process of repatriation and asked to the group to sensitize those who are in DRC to come back home.
- UNHCR's Field Office Huye received a mission from the Swedish embassy. The mission visited the Kigeme refugee camp, as well as some proposed activities related to joint projects between WFP/UNHCR – mainly in WASH,

Environment and Energy projects, as well as Livelihoods, in the Nyamagabe district.

Needs & Gaps

- In Mahama, there is a lack of science combinations at the school due to absence of a Science Laboratory. There is also limited materials for children with impairments to be integrated in the normal schools.

Emergency Transit Mechanism (ETM)



176 refugees and asylum seekers arriving in Rwanda from Libya through the ETM. Kigali @UNHCR/Eric Didier Karengamire

Achievements & Highlights



PROTECTION

- Since the inception of the ETM Centre in Gashora, 824 persons of concern have been evacuated from Libya to Rwanda. With 497 refugees resettled for durable solutions, the birth of 11 babies at the ETM and death of two (2) persons of concern from the ETM, currently, the Transit Centre is hosting 336 refugees and asylum seekers. The 336 PoCs include 194 Eritreans, 119 Sudanese, 11 Somalis, 5 Ethiopians, 1 Chadian, 5 South Sudanese, and 1 Cameroonian. By end of January 2022, 20% were females, 14% children including 6% of the population are unaccompanied and separated children.
- 138 (91 male and 47 female) PoCs were reached through individual counselling sessions, healing groups, occupational therapy, and music therapy sessions thus gradually supporting them recover from previous traumatic experiences.
- 98 PoCs (7F, 91M) had access to community technology facility and were able to access

information, recreational facilities, improve their psychosocial well-being and reduction in stress.

- 8 BIAs for UACs (3 girls and 5 boys) were carried out and are under review while 2 BIDs were deliberated on to determine the best interest of the children.



COMMUNITY EMPOWERMENT AND SELF-RELIANCE

- 224 PoCs representing 67% of the evacuees in ETM benefitted from various vocational trainings including 167 - motor vehicle driving sessions, 8 - domestic electricity training, 23 - computer/ICT training and 26 - hair dressing training.
- 1 PoC was engaged in income generating activities, in the form of airtime selling.
- 135 PoCs (19 female and 116 male) attended language literacy/education for English, French, and Kinyarwanda, learning in 3 levels: 1st level of beginners, 2nd level of lower-intermediates and 3rd level of intermediates.
- Refresher training on entrepreneurship and financial management was provided to 12 members of host community to prepare them on management of start-up kits and working in cooperatives.



HEALTH AND NUTRITION

- 387 visits at primary health care services (including members of the host communities).
- 57 persons received secondary and tertiary health care services.
- 16 children between the ages 6-23 months were supported with Blanket Supplementary Feeding Program (BSFP). 11 persons in were supported through accessing complementary nutritional feeding programmes.
- 13 women of reproductive age had access to contraceptive methods.



FOOD SECURITY AND COOKING ENERGY

- As of the end of February, 336 PoC were served hot meals three times a day in comparison to the

decrease by 29 PoCs from the previous month, is attributable to resettlement to 3rd Countries.

- All the 27 PoCs that were recommended to receive Liquefied Petroleum Gas (LPG) due to their status i.e., pregnant, lactating or families with an under 5-year-old child were assisted.
- Special meals were prepared and served to 27 PoCs with medical conditions and nutritional requirements following recommendation from the health partner.



WATER, SANITATION, AND HYGIENE

- Safe water is supplied daily, from the district water authority (WASAC), and currently 58 litres are available per person per day.
- Regular monitoring of water quality was undertaken with the average free residual chlorine levels at 0.3mg/l and pH level at 7.6 which was within acceptable standards.
- 69% of the population (250) were reached with hygiene promotion activities. Supply of 280litres of liquid soap was distributed at the ETM and was utilised for hand washing and cleaning sanitation facilities to minimise the spread of COVID-19.



SHELTER, INFRASTRUCTURE, AND NFI

- The construction of the new accommodation block was at a 92% completion rate.
- The construction of a clinic in the Centre was at a 68% completion rate.
- The Construction of a child-friendly space was at 95%.



DURABLE SOLUTIONS

- The ETM facilitated the Norwegian cultural orientation. The mission was conducted face to face by a facilitator from IOM Norway, in Gashora from 31 Jan to 4 Feb 2022. The mission covered 10 individuals accepted for resettlement to Norway.
- The ETM prepared and coordinated the Canadian remote selection mission which took place on 8-9 Feb 2022 and covered 8 Sudanese individuals.

- Two Finnish remote selection missions took place on 2-3 Feb and 15-25 Feb 2022 and covered 85 individuals in total.
- Under case processing, 59 cases of 63 individuals were interviewed for resettlement.
- 93 cases of 95 individuals were finalized through case processing for durable solutions and referred to the Regional Bureau for submission to resettlement country.
- 99 cases of 101 individuals were submitted by RB to resettlement countries.
- 63 individuals were counselled of the status of their cases.
- As of the end of February, 31 cases of 35 individuals were pending at Resettlement level for durable solutions.

Needs & Gaps

- Need for installation of lightening arrestor for the entire camp or at the cafeteria and warehouse following the Government recommendation to mitigate on the risk of lightening most especially during the rainy season.
- Due to non-issuance of refugee ID Cards the motor vehicle driving finalists are unable to be registered to undertake driving tests and subsequently to receive licenses to enable them to benefit from self-reliance activities.



Vehicle Driving Lessons is one of the life skills provided to refugees and asylum seekers in ETM Rwanda, Gashora. @UNHCR/Eric Didier Karinganire

Return and Reintegration

Achievements & Highlights

- On the 17th of February 2022, 134 returnees were facilitated by UNHCR in Karongi to be transported to their areas of origin.

- On the same day 73 returnees were received in Rubavu from Goma and 103 returnees were received in Rusizi from Bukavu, all returnees were immediately conveyed to Kijote Transit Centre (TC).
- On 18th February 2022, the honourable Minister of MINEMA welcomed the 176 returnees in Karonji.

Development & Comprehensive Refugee Response Framework (CRRF)

- Engagement with the Joint Actions Development Forum (JADF): Following the stakeholder consultation meetings held in all refugee hosting districts (except for Kigali), the next step to further refugee inclusion through advocacy efforts is by participating in the JADF retreats/planning meetings, which will be held in each refugee hosting district in the coming months. In a first, UNHCR participated at the JADF retreat for Gisagara District on 11-12th February 2022. This was a natural follow up to the Stakeholder Consultations held earlier in 2021, where the mayor and partner agencies in the district made positive comments about refugee inclusion, their skills and capacities and their legal right to work. The retreat gave UNHCR an opportunity to reiterate the importance of including refugees in existing and planned projects, that contribute to the overall development of the district.
- At the Gisagara retreat, the NST (National Strategy for Transformation) and DDS (District plans for the period of 2017 to 2024) were discussed; UNHCR was able to make an intervention on the Global Compact for

Refugees (GCR) and the spirit of inclusion of enshrined in the Comprehensive Refugee Response Framework (CRRF) – this includes not just refugees, but the host community as well. A new flagship project for the District, “ECOTOURISM” was agreed on: this has elements of both environment and livelihoods, linked to refugees/refugee camps. The Mayor of Gisagara appointed an Adhoc Committee to work with the District to share ideas; UNHCR is part of this committee, along with World Vision, MOUSECOR and Vice Mayor in charge of social affairs.

- Stakeholder Mapping Project, Nyarugenge district (Kigali): The mapping of agencies in the field working in Nyarugenge district in Kigali, was completed in February, to see how activities and projects complement the CRRF and the pledges made at the Global Refugee Forum. There are 61 agencies present in the district; briefly the findings are:
 - 27% of are engaged in activities linked to Jobs & Livelihoods; 26% in health and 23% in Education
 - 75% of stakeholders’ projects in Nyarugenge have activities that can be linked to the pledges made at the GRF
 - All stakeholders’ projects in Nyarugenge have activities that are broadly linked to CRRF/GCR.

There are three urban districts that host refugees in Kigali; mapping is now complete for Kicukiro and Nyarugenge; Gasabo will be completed by March.

- The National Statelessness Taskforce started the implementation of a training and awareness-raising exercise on statelessness for over 3000 government officials at District, Sector and Cell levels. The exercise is part of a comprehensive roadmap for an identification survey of stateless persons and persons with undetermined nationality in Rwanda.

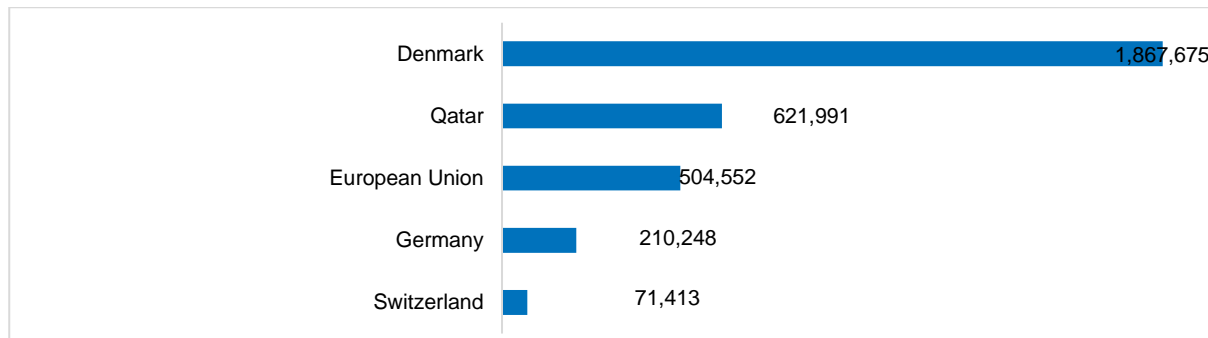


A new health center was constructed in the Mugombwa camp to provide access to primary and secondary health services to both refugees and host communities. Rwanda @UNHCR_Eric Didier Karinganire

Financial Information

UNHCR is grateful for donors' critical support to this operation and those who have contributed to UNHCR programmes with unearmarked and broadly earmarked funds.

Funding received is USD 3,275,879



Other softly earmarked contributions | USD

Norway | Private donors

Unearmarked contributions | USD

Sweden 77.6 million | **Norway** 72.5 million | **Netherlands** 37.2 million | **Denmark** 35.6 million | **Germany** 27.6 million | **Switzerland** 18.4 million | **Belgium** 11.9 million | **Ireland** 11.8 million | Algeria | Armenia | Bulgaria | Canada | Estonia | Finland | Iceland | Liechtenstein | Lithuania | Luxembourg | Monaco | Montenegro | Peru | Qatar | Republic of Korea | Saudi Arabia | Singapore | Thailand | Turkey | Uruguay | Private donors

Contacts:

Rediet Hirpaye, External Relations, hirpaye@unhcr.org, Cell +250 (0) 78-107-3479

Eric Didier Karinganire, Senior Communications/Public Information Assistant, karingan@unhcr.org, Cell: +250 (0) 78-361-1637

Data Portal: <https://data2.unhcr.org/en/country/rwa> | **UNHCR Rwanda website:** www.unhcr.org/rw | **Twitter:** @RefugeesRwanda

Instagram: refugees_rwanda