

Total Arrivals from Ethiopia


18,105

 Individuals Registered
 Source: UNHCR, COR
 As of 1 June 2022

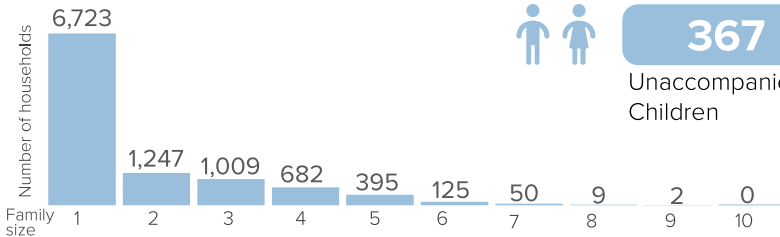
10,242

Households


29 Individuals

 Relocated from Hamdayet/Galabat
 in May

Family Size



Introduction:

In support of the Government of Sudan's response to the ongoing influx of refugees from Ethiopia's Tigray region to eastern Sudan, UNHCR, partners, and other UN agencies set up a new refugee camp in Um Rakuba-Gedaref State. First group of refugees were relocated to this site on at the end of 2020 and individual biometric registration is ongoing. The dashboard below presents the population profile for Um Rakuba camp. Reduction in the population figures for May as result of exclusion no show for assistance collection for past 8 months.

Persons with Specific Needs


813

Individuals


367

 Unaccompanied/Separated
 Children

Country of Origin

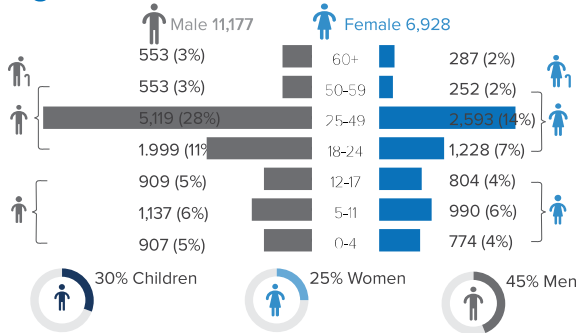
18,079

Ethiopians

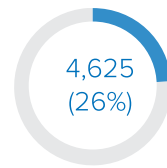
26

Eritreans

Age-Gender Breakdown

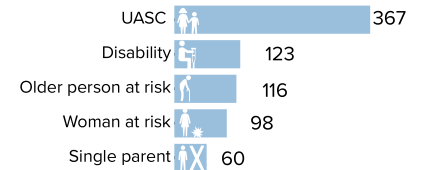


Reproductive-Age Women/Girls

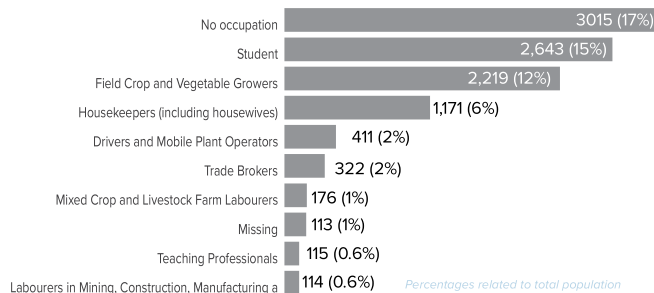


Percentages related to total population

Specific Needs (top 5)

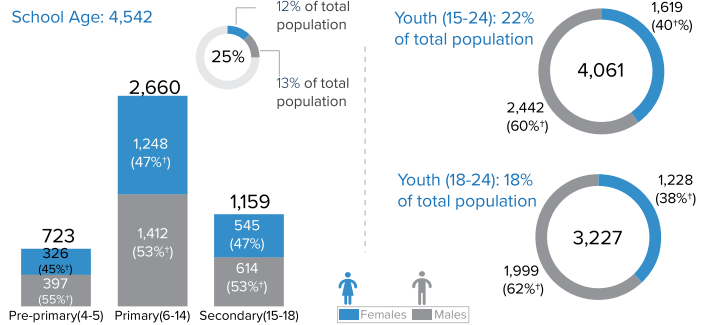

 *UASC: Unaccompanied or separated child
 Source: ProGres v4/Rapp

Occupation (Top 10)

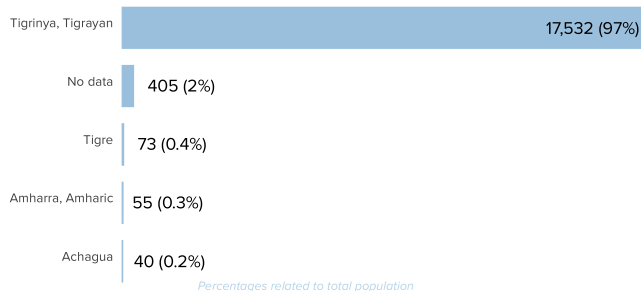


*1,211 Individuals have unknown occupation

School Age Children and Youth



Ethnicity (Top 5)



Top 5 Regions of Origin (Ethiopia)

