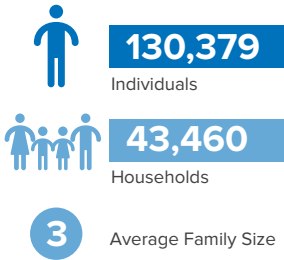


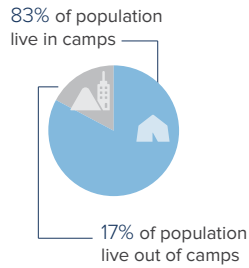
Eritrean Refugees Overview in Sudan

as of 31 May 2022

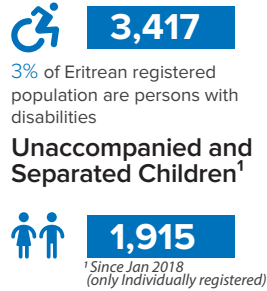
Eritrean Refugees and Asylum-seekers



Population Distribution



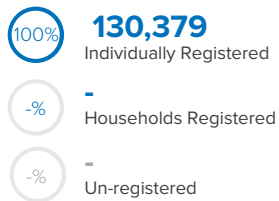
Persons With Disabilities



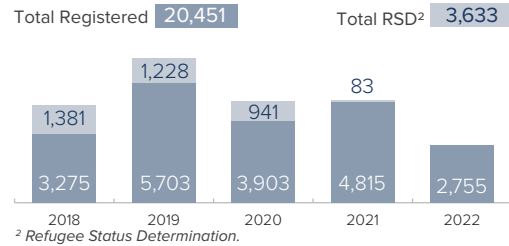
UNHCR continues to receive new arrivals in East Sudan, largely from Eritrea. The Commission of Refugees (COR) receives and assists asylum-seekers at the border where they are temporarily hosted in reception centres.

Within 1-2 weeks they are transported to Shagarab camps where they undergo screening, registration, and Refugee Status Determination (RSD) while receiving life-saving services and shelter.

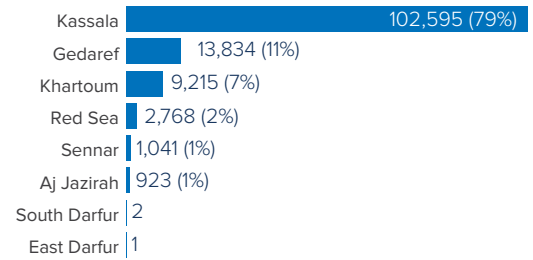
Registration Status



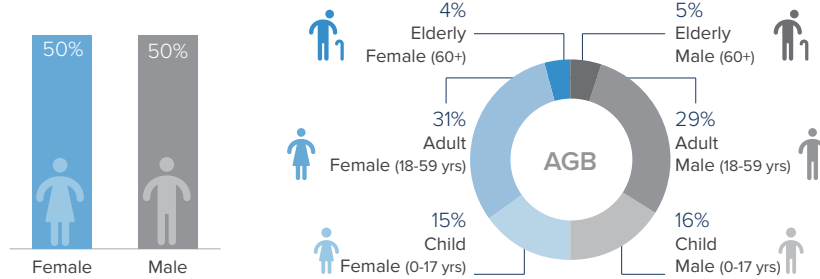
Registration Statistics Since 2018



Eritrean Refugees and Asylum-seekers Per State



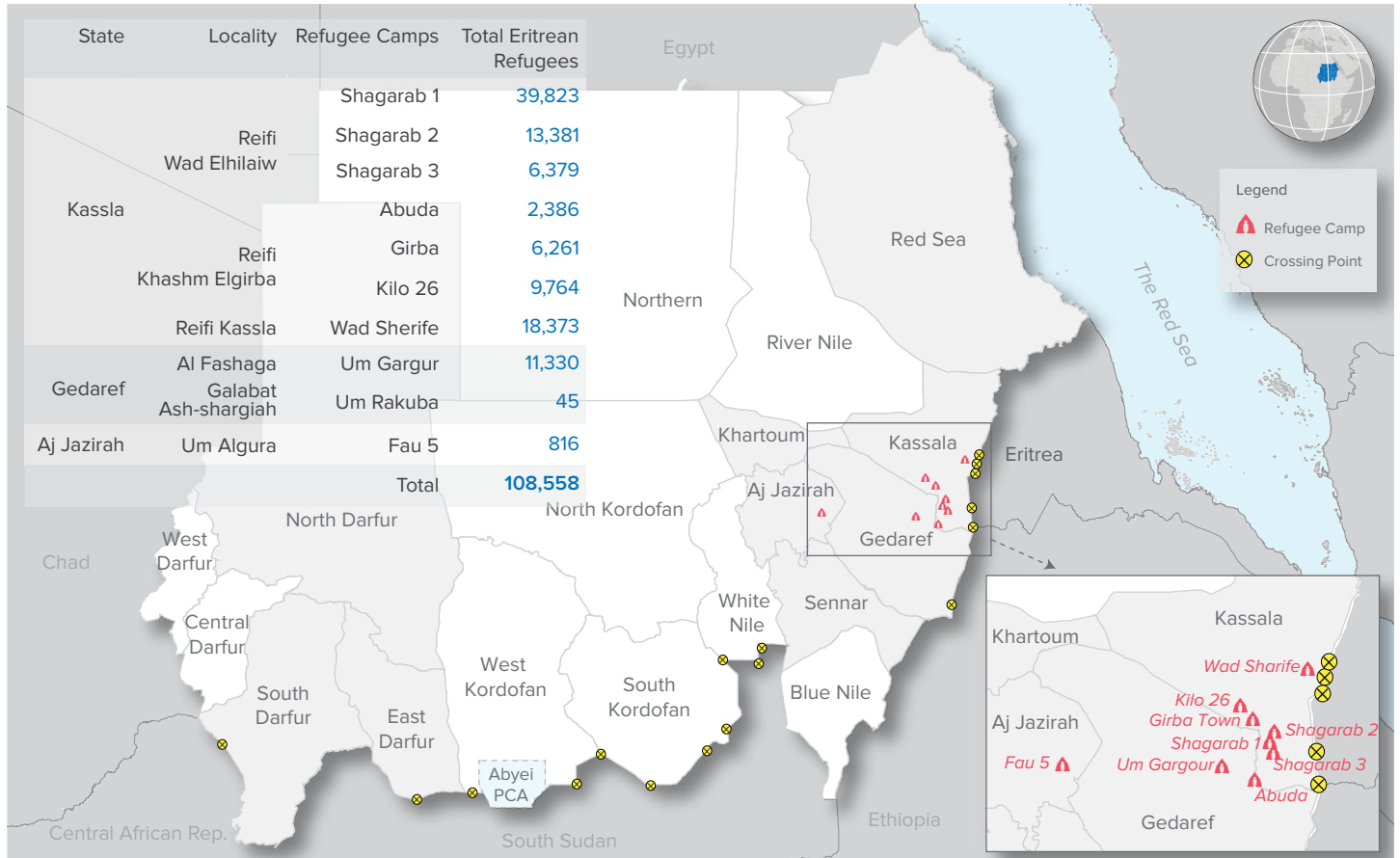
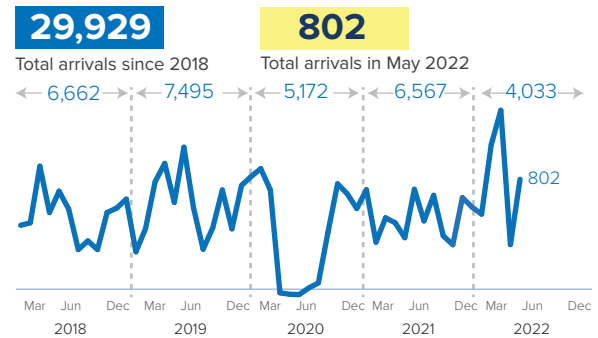
Age-gender Breakdown³



³ Population distribution statistics are based on registered individuals only.

Sources: UNHCR, Commission of Refugees (CoR), UNICEF

New Arrivals Trends (2018 - 2022)



The boundaries and names shown and the designations used on this map do not imply official endorsement or acceptance by the United Nations. Abyei region: Final status of the Abyei area is not yet determined.

