

778,009

Total refugees in camps and sites
(90% of the 870,500 refugees registered in Ethiopia)

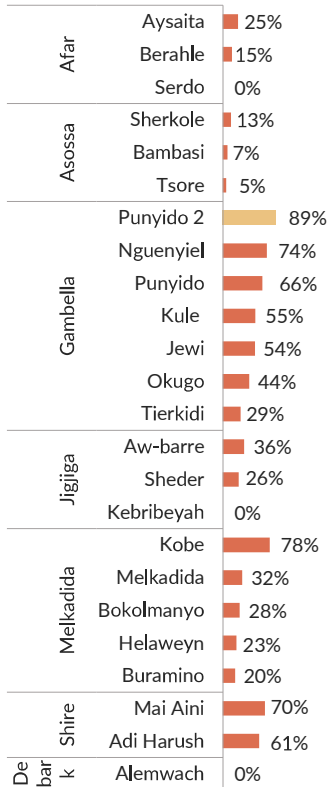
153,006

Households (HHs)
Average HH size : 5

24

Refugee camps and sites

% of HHs living in adequate dwelling by camp and site



Impact indicator

41% of households living in adequate dwelling

62,197 HHs
316,167 Individuals



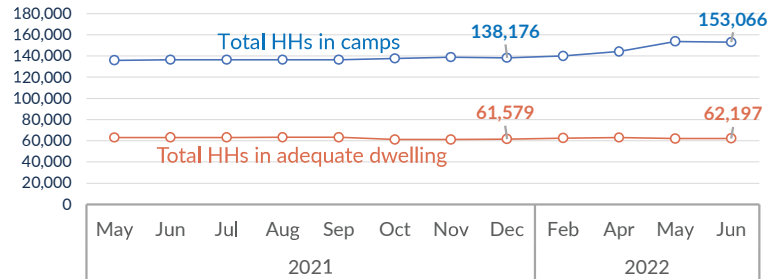
59% of households living in inadequate dwelling

90,869 HHs
461,872 Individuals

Standard 100%

Acceptable (≥95%) Unacceptable (94% - 80%) Critical (≤79%)

Trends | Total HHs in camps and HHs in adequate dwelling



Summary of shelter interventions by location

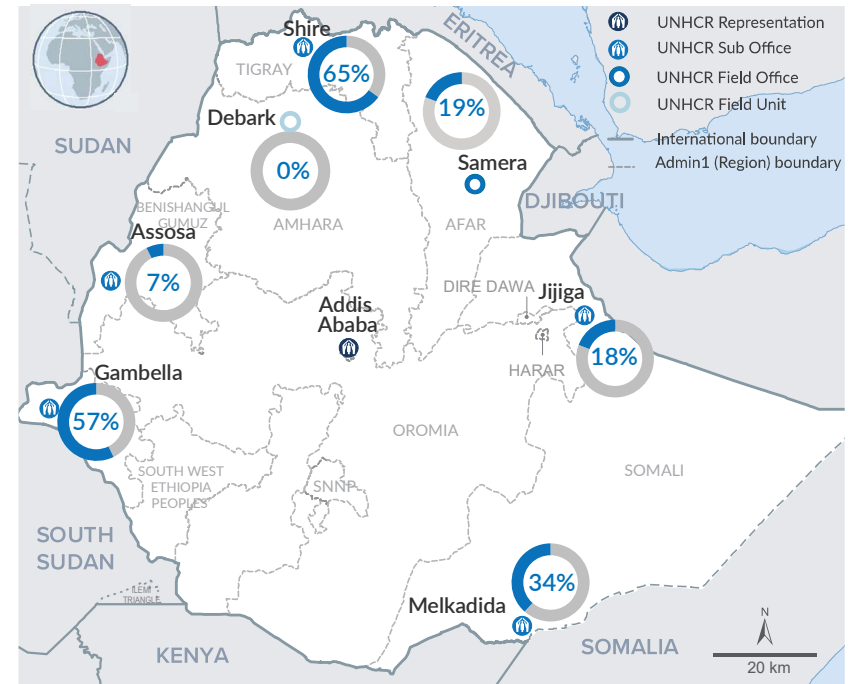
Locations	Total HHs	HHs in adequate dwelling	Emergency shelter			Transitional shelter			Shelter maintenance			CBI Shelter		
			Planned	Achieved	% Achieved	Plan'd	Achv'd	% Achv'd	Plan'd	Achv'd	% Achv'd	Plan'd	Achv'd	% Achv'd
Afar	11,083	2,081	1,000	692	69%	732	-	-	50	-	-	-	-	-
Asossa	16,730	1,188	1,079	989	92%	41	-	-	-	-	-	106	-	-
Debar k	5,484	-	1,540	1,224	79%	314	-	-	-	-	-	-	-	-
Gambella	73,195	41,828	1,854	1,854	100%	472	172	36%	928	-	-	-	-	-
Jigjiga	7,714	1,424	-	-	-	-	-	-	-	-	-	614	-	-
Melkadida	31,419	10,828	1,300	581	45%	261	-	-	-	-	-	-	-	-
Shire	7,441	4,848	-	-	-	-	-	-	-	-	-	-	-	-
Total	153,066	62,197	6,773	5,340	79%	1,820	172	9%	978	-	0%	720	-	0%

Partnership

Government of Ethiopia
Refugees and Returnees Service (RRS)

Partners
AHA, ANE, SEE

% of HHs living in adequate dwelling by location



The boundaries and names shown and the designations used on this map do not imply official endorsement or acceptance by the United Nations. * Final boundary between the Republic of Sudan and the Republic of South Sudan; and between Ethiopia and Somalia has not yet been determined.

UNHCR in collaboration with Refugee Returnee Service (RRS) and partners provides emergency shelters, site development, and transitional shelter solutions to both refugees and asylum seekers in all sites.

Strategic Objectives:

- Enable refugees to live dignified lives in secure settlements with greater opportunities for self-reliance.
- Enhancing refugee's access to adequate housing and improved living conditions.
- Engagement of refugee and host communities in provision and design of shelter solutions.
- Foster collaboration on shelter and settlement sector response with development partners and private the sector in line with the Global Compact on Refugees (GCR) and the Comprehensive Refugee Response Framework (CRRF).