

# REFUGEE COORDINATION FORUM | MOLDOVA

As of 25 August 2022

## Refugee Response Plan Moldova in a Glance



**1,000,000**

Projected Refugee Population entering by Dec. 2022



**250,000**

Projected Refugee Population remaining by Dec. 2022



**340,000**

Refugee Children entering by Dec. 2022.

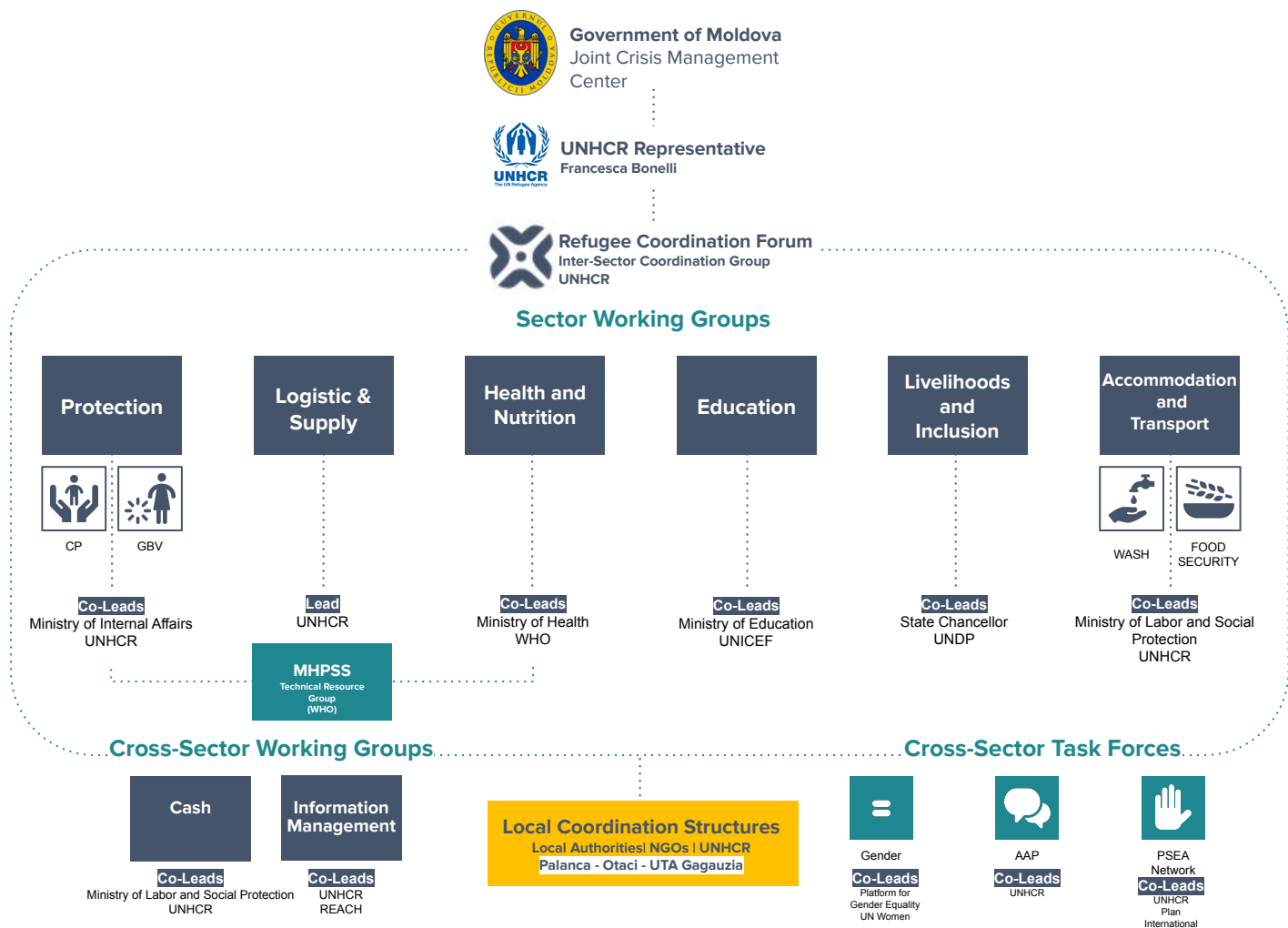


**\$ 414.1 M**

Total Financial Requirements in USD



Regional Refugee Response for the Ukraine Situation



# REFUGEE COORDINATION FORUM CONTACTS



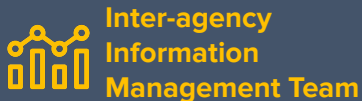
To access the coordination meetings' calendar, please [click here](#)

Refugee Coordination Forum Inter-Sector Coordination Group	Joint Crisis Management Centre UNHCR	Diego Nardi Catalina Sampaio	<a href="mailto:mdachrcf@unhcr.org">mdachrcf@unhcr.org</a>
Refugee Protection Working Group	UNHCR	Andrew Painter	<a href="mailto:painter@unhcr.org">painter@unhcr.org</a>
GBV Sub-Working Group	UNHCR UNFPA	Valentina Duque Fatima Alwahaidy	<a href="mailto:duquev@unhcr.org">duquev@unhcr.org</a> <a href="mailto:alwahaidy@unfpa.org">alwahaidy@unfpa.org</a>
Child Protection Sub-Working Group	UNHCR UNICEF	Katherine Lamp Dawood Khan	<a href="mailto:lampe@unhcr.org">lampe@unhcr.org</a> <a href="mailto:dkhan@unicef.org">dkhan@unicef.org</a>
Disability Task Force	Keystone Moldova OHCHR	Ludmila Malcoci Tatiana Cernomorit	<a href="mailto:lmalcoci@khs.org">lmalcoci@khs.org</a> <a href="mailto:tatiana.cernomorit@un.org">tatiana.cernomorit@un.org</a>
Roma Task Force	UNHCR	Olga Bitca	<a href="mailto:bitca@unhcr.org">bitca@unhcr.org</a>
Anti-Trafficking Task Force	UNHCR IOM	Martina Bogdeva Ganna Antonova	<a href="mailto:bogdeva@unhcr.org">bogdeva@unhcr.org</a> <a href="mailto:ganantonova@iom.int">ganantonova@iom.int</a>
Cash Working Group	Ministry of Labor and Social Protection UNHCR	Tudor Mancas Yigit Anil Gurur	<a href="mailto:tudor.mancas@social.gov.md">tudor.mancas@social.gov.md</a> <a href="mailto:gurur@unhcr.org">gurur@unhcr.org</a>
Accommodation and Transportation Working Group	Ministry of Labor and Social Protection UNHCR	Junaid Chakerzehi	<a href="mailto:chakerze@unhcr.org">chakerze@unhcr.org</a>
WASH Sub-Working Group	UNICEF	Mohammad Almjahleh	<a href="mailto:malmjadleh@unicef.org">malmjadleh@unicef.org</a>
Food Security Sub-Working Group	WFP	Bahodur Umarov Alina Alexei	<a href="mailto:bahodur.umarov@wfp.org">bahodur.umarov@wfp.org</a> <a href="mailto:alina.alexei@wfp.org">alina.alexei@wfp.org</a>
Logistics and supply Working Group	UNHCR	Andre Lukovics	<a href="mailto:lukovica@unhcr.org">lukovica@unhcr.org</a>
Education Working Group	Ministry of Education and Research UNICEF	Adriana Cazacu Larisa Virtosu Katherine Lamp	<a href="mailto:adriana.cazacu@mec.gov.md">adriana.cazacu@mec.gov.md</a> <a href="mailto:lvirtosu@unicef.org">lvirtosu@unicef.org</a> <a href="mailto:lampe@unhcr.org">lampe@unhcr.org</a>
Health and Nutrition Working Group	Ministry of Health WHO	Zinaida Bezverhni Stela Gheorghita	<a href="mailto:zinaida.bezverhni@ms.gov.md">zinaida.bezverhni@ms.gov.md</a> <a href="mailto:gheorghitas@who.int">gheorghitas@who.int</a>
Inclusion and Livelihoods WG	State Chancellor UNDP	Svetlana Turcanu Teodora Zafu	<a href="mailto:svetlana.turcanu@gov.md">svetlana.turcanu@gov.md</a> <a href="mailto:teodora.zafu@undp.org">teodora.zafu@undp.org</a>
PSEA Network	UNHCR Plan International	Diego Nardi (PSEA Coordinator) Catalina Birsanu Stavros Zotos	<a href="mailto:nardid@unhcr.org">nardid@unhcr.org</a> <a href="mailto:birsanu@unhcr.org">birsanu@unhcr.org</a> <a href="mailto:stavros.zotos@plan-international.org">stavros.zotos@plan-international.org</a>
Gender Task Force	Platform for Gender Equality UN Women	Nina Lozinschi Dominika Stojanoska	<a href="mailto:secretariat.platformadegen@gmail.com">secretariat.platformadegen@gmail.com</a> <a href="mailto:dominika.stojanoska@unwomen.org">dominika.stojanoska@unwomen.org</a>
Accountability to Affected Populations (AAP)	UNHCR	Natalia Kropivka	<a href="mailto:kropivka@unhcr.org">kropivka@unhcr.org</a>
MHPPS Technical Resource Group	WHO	Murat Apaydin	<a href="mailto:apaydinm@who.int">apaydinm@who.int</a>



Regional Refugee Response  
for the Ukraine Situation

# REFUGEE COORDINATION FORUM INFORMATION MANAGEMENT RESOURCES



*If you need further guidance, information or support regarding the refugee coordination forum IM resources, please feel free to outreach our IM team by sending an e-mail to [mdachrcf@unhcr.org](mailto:mdachrcf@unhcr.org).*

## [Operational Data Portal \(ODP\)](#)

Where you can find documents, dashboards, information products and links

## [5W data entry](#)

Where you can enter or update information about your humanitarian interventions in support of refugees in Moldova.

## [5W dashboard](#)

Visualizes the data entered in the table above. The dashboard is updated once per day. This should be the public record of humanitarian activities. It is a coordination tool.

## [Assessment Registry data entry](#)

Where you can enter information about your needs assessment that is completed or planned.

## [Assessment Registry dashboard](#)

Visualizes the data from the form above. Here is where you can see what assessments are happening.

## [Interagency contact list](#)

Where to find and add the contacts of humanitarian workers and focal points.

## [Interagency Sharepoint folder](#)

Key documents relevant to the interagency response.