



SPHERE Building Tomorrow – SBT

2022-2023

WHO WE ARE

SPHERE Building Tomorrow (SBT) is a local humanitarian non-profit organization established in 2018.



SBT was created with the **intention** of alleviating **livelihood** and **social stability** for those in need by enhancing **employability**, providing **educational opportunities** and enlivening local neighborhoods and communities.

WHO WE ARE



Today, SPHERE Building Tomorrow works in close collaboration with:

- Local and international, stakeholders and actors.
- Vulnerable and marginalized communities and community members

How?

- By targeting the fields of Livelihoods, Social Stability, the Education, Basic Assistance, and Protection.

SBT Interventions and Capacity Building

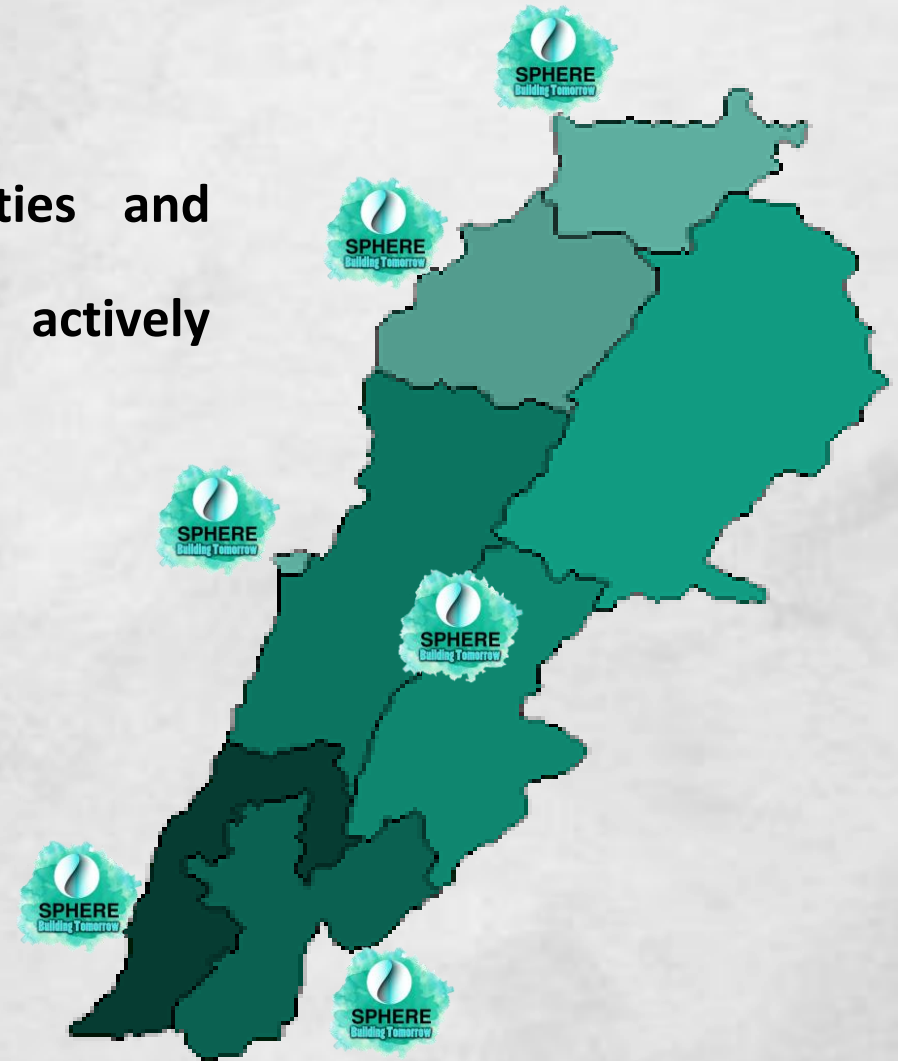


WHERE HAVE WE BEEN?

We operate across Lebanon to empower communities and individuals to build a brighter future and have been actively engaged in North, South, Mount Lebanon, and Beirut.

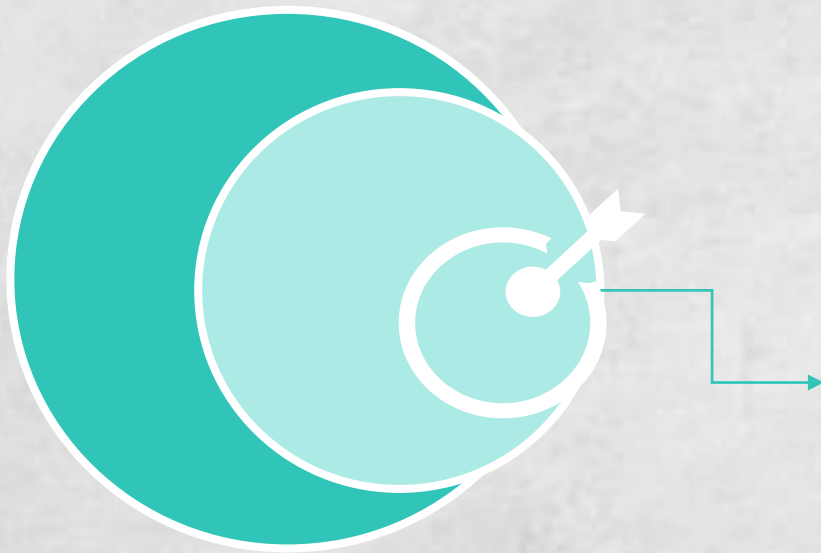


Soon in Beqaa



OUR MISSION

WE ARE DEDICATED TO SUPPORT PEOPLE IN THEIR LIVELIHOODS.



At SPHERE Building Tomorrow, we believe that people can grow when offered a chance to reach their full potential .

And with that believe, SPHERE Building Tomorrow operates through teaching and motivating individuals interested humanitarian interventions and services.



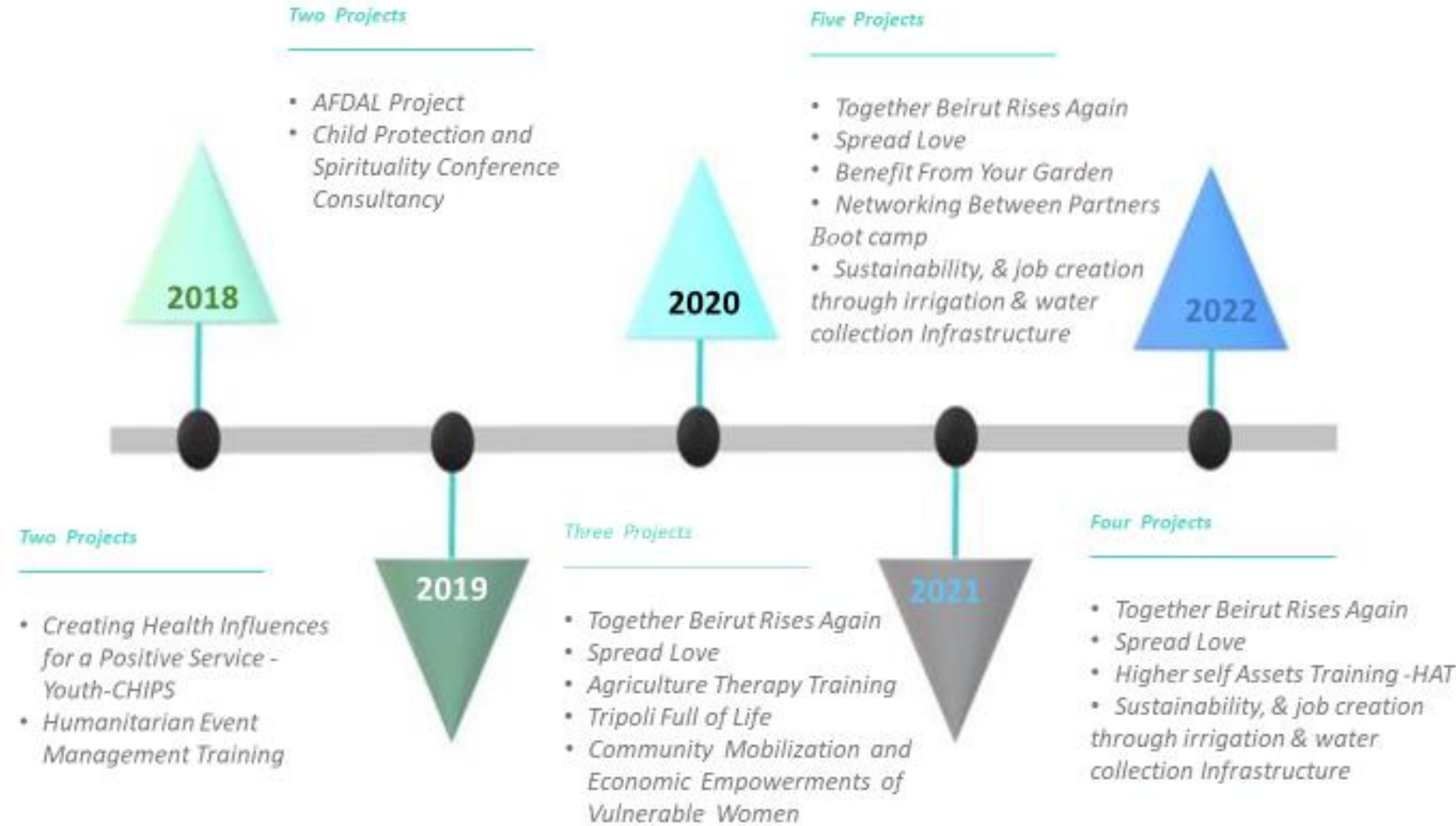
OUR SECTORS & ACHIEVEMENTS

At an operational level,
SPHERE Building
Tomorrow has adopted

12 contextually tailored
activities and partnerships

Empowers its employees,
beneficiaries, volunteers,

Responding to the
collective and individual
needs of the the targeted
communities



OUR SECTORS & ACHIEVEMENTS

Livelihoods & Food Security



Delivering different non formal educational training programs that aim at providing access to employment in specific sectors

- AFDAL Project
- Community Mobilization and Economic Empowerment of Vulnerable Women –Life Skills
- Agricultural Therapy Training
- Benefit from Your Garden
- ‘Rainwater Harvesting System

Youth & Women Empowerment & Protection



Diversified youth empowerment initiatives, where different members of the community actively engage and participate in activities and dialogues:

- Youth- CHIPS Project
- Event Management Training
- City Full of Life
- Child Protection Conference
- Networking Between Partners – Boot camp

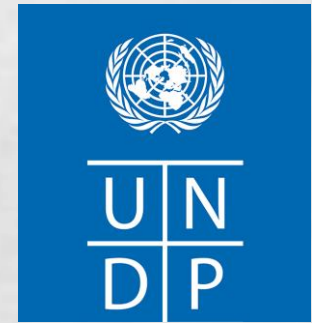
Basic Assistance



Basic Assistance-field interventions launched to help affected people by Beirut Blast:

- Together Beirut Rises Again
- Spread Love Project

OUR AFFILIATED PARTNERS



OUR WORK PLAN FOR 2022-2024



**Agriculture
Livelihood
Program-ALP**

BACKGROUND

- In 2022, we aim to respond to the current challenges faced by a number of displaced Syrians, vulnerable Lebanese, and Palestinian refugees. SBT has been involved in protection and the provision of immediate assistance to vulnerable populations; support service provision through national systems; and reinforce Lebanon's economic, social, and environmental stability.
- At present, there is a rising need for new means of livelihood, one that provides sustainable access to agriculture and food security as well as the possibility of commercial use or means to establishing a small home based business.
- SPHERE Building Tomorrow, after flagging this need, began to develop its programs to provide residents of Lebanon, both national, displaced and refugees across Lebanon, with the necessary groundwork to achieve self-sufficiency, whether on a household level or on the community level through agriculture and food security services.



GENERAL OBJECTIVE

Strengthen career development opportunities for the targeted vulnerable participants through building their agriculture Livelihood skills, food security, employability skills and social awareness across Lebanon.



SPECIFIC OBJECTIVES

Improved Job readiness among participants through acquiring the relevant agro-food Livelihood and social awareness:

Ensured access to apprenticeship and cash assistance for 10% of the participants and strength 10% of SMEs to ensure economic sustainability.

Reinforce the population's capacities to access agro-food supported by career development knowledge.

Improve food access through cash-based support to sustainable agriculture livelihoods to enhance productivity.

Strengthen capacities to foster dialogue, social cohesion and conflicts sensitivity and preventions.

Stimulate local economic growth and market system to foster income-generating opportunities and decent and safe employment



OUR WORK PLAN

In recognition of the developing trend of using a gaming approach to promote teaching and learning, we are developing partnership programs with software development initiatives. The aim is to create interactive online course and integrate them into SPHERE Building Tomorrow's core youth empowerment, life skills and business development capacity building tools.



OUR WORK PLAN

Program Title: ي Feed من الارض

Target constituents: 100 women

Funders: The Zovighian Partnership and 3 QA

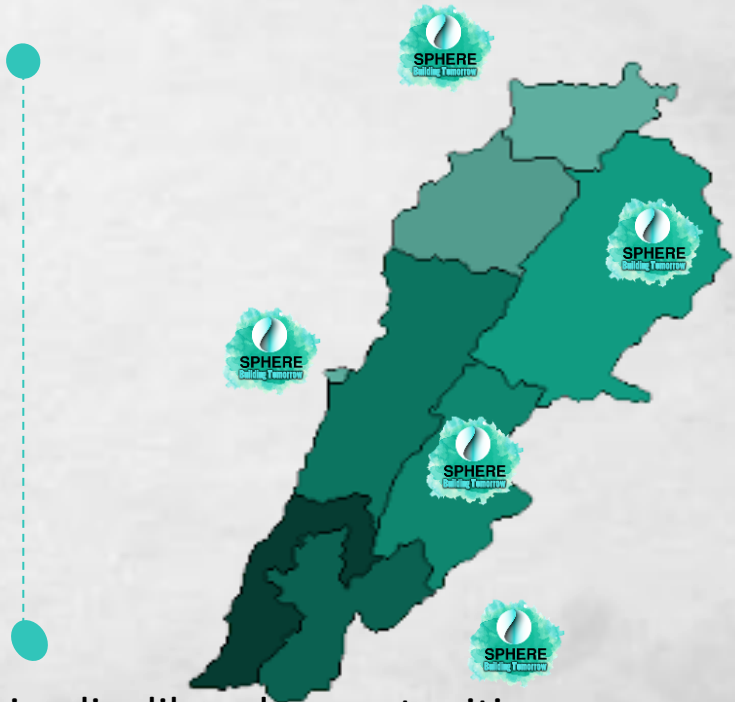
Targeted Location: Across Lebanon-National Level

Program duration: 12 Months

Program overview: Stimulate local economic development and market systems by improving livelihood opportunities in the agriculture sector, career development, and life skills to ensure labor-intensive activities by addressing immediate agriculture recovery and assistance and meet basic needs to vulnerable populations: In-kind distribution and access to income/cash.

Program modules include:

- 1. Agriculture Livelihoods
- 2. Food Security Skills.
- 3. Career Development
- 4. Life Skills.
- 5. OJT & Apprenticeship
- 6. In-Kind Distribution



Livelihoods	Youth Empowerment	Women Empowerment	Social Stability	Basic Assistance	Health	Protection

PROJECT TITLE: **Feed من الأرض** – UNDER ALP

• Since there is a rising need for new means of empowering women in livelihood and socio-economic growth, **SPHERE Building Tomorrow and The Sustainable Community Association** are proposing an established two-teared project, that aims at strengthening women with sustainable access to **agricultural techniques aligned with food security information and practices**, reinforced with socio-economic knowledge, to enhance their social roles and ensure their employability.

• The project titled: "**Feed من الأرض**", addresses up-to-date components with agro-food sources relevant to each area's settings:

- Targeted Population: Approx. 20 women (50% of which are refugees and 50% residents).
- Targeted Locations: 5 governorates across Lebanon
- Range of Age: between 17 and 56 years old

The women will benefit from seasonal crop using specific-developed techniques in agro-food. Also, they will be supported with in-kind toolkits, enabling them to establish small homebased businesses and ensure their livelihoods, and help their families.

CAPACITY BUILDING COMPONENTS

Governorate	Beirut	North Lebanon	South Lebanon	Mount Lebanon	Beqaa
Agriculture Component	Integrated Pest Management -IPM				
	Good Agricultural Practices-GAP (including Pesticide Residence and Production)				
	Urban Agriculture	Vegetables Agronomy	Avocado and Annona	Soap Techniques	Daily Dairy Cattle Techniques
Food Security Component	Food and Fruit Production	Composting Production	Avocado and Annona Cuisine	Soap Production	Daily Dairy Cattle Production
Career Development	Branding Packaging and Labeling Sales and Marketing		Production Digital and social media Legal Knowledge		
Life Skills	Communication Behavioral Change		Emotional Intelligence Conflict Sensitivity		



Thank you



+96176616534

[@spherebuildingtomorrow](https://www.instagram.com/spherebuildingtomorrow)

www.spherebuildingtomorrow.org