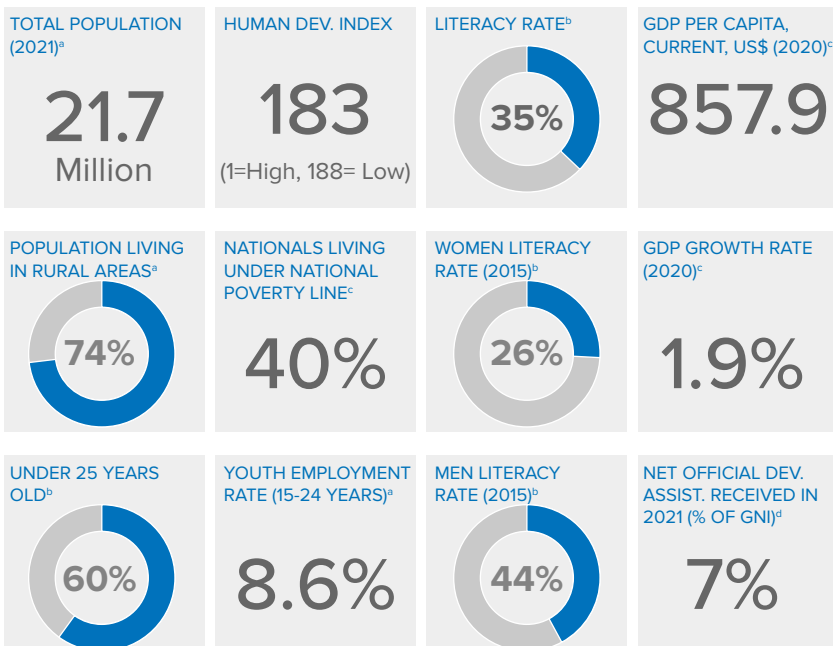


COUNTRY OVERVIEW



POLICY DOCUMENTS FAVORABLE TO NATIONAL INCLUSION OF THE FORCIBLY DISPLACED (FD)

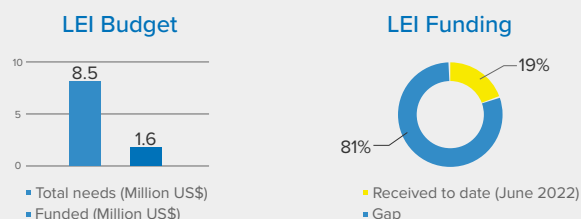
NATIONAL DOCUMENTS

- Burkina Faso Refugee Law
- Plan national de développement économique et social (PNDES II) 2021-2025

UNHCR DOCUMENTS

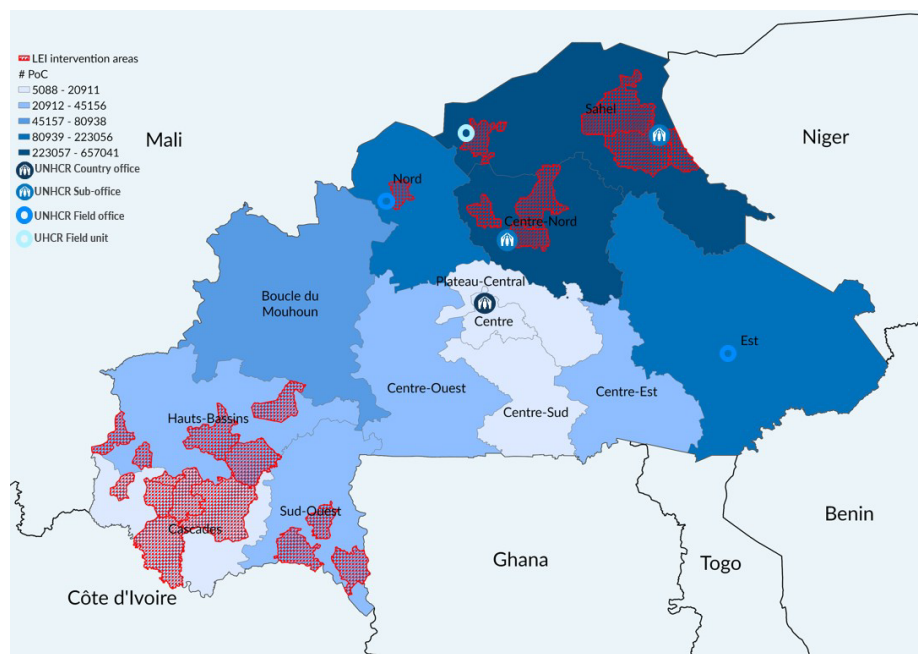
- Stratégie pluriannuelle des moyens de subsistance des personnes sous mandat du HCR au Burkina Faso 2022-2025
- Crisis in the Sahel: UNHCR emergency and protection response (2020)
- Baseline assessment of the situation of IDPs, refugees, asylum seekers and host communities in Burkina Faso; planned for 2022

BURKINA FASO LEI FINANCIALS (2022)



OPERATIONAL CONTEXT

 Refugees and asylum seekers (June 2022) **27,043**  IDPs (June 2022) **1,9** Million



LEI REGIONAL STRATEGY

Foster the socio-economic inclusion, enhance the self-reliance and build the resilience of the FD and host community members through the use of data and analytics for more targeted assistance; inclusion in development and social protection projects; and joint programming with institutional partners.

LEI NATIONAL STRATEGY

Sustainably reduce the dependency on humanitarian aid to enhance the self-reliance and resilience of the FD by strengthening livelihoods and supporting local area-based development efforts and innovation.

Partnerships

STAKEHOLDERS SUPPORTING LEI

GOVERNMENT ACTORS CONAREF, VAO, SP-PIF	GOVERNMENT ACTORS Maison de l'entreprise, SFTF Mining (East)
NGO & CIVIL SOCIETY DRC, OCADES, Plan Burkina, VSF	POCs COMMUNITY GROUP AGED
IFIS OR DEV. BANKS CBM, MICROFI, WB, BAOBAB, RCPB	UNITED NATIONS AGENCIES FAO, ILO, UNDP, WFP (joint action plan), IOM

IMPLEMENTING PARTNER

VSF is the only implementing partner for UNHCR's LEI activities. For the year 2022, these activities cover 22 communes for the benefit of IDPs and refugees.

OPERATIONAL CONTEXT

