



**UNFPA Mobile Orange Safe Spaces**

Информация • поддержка • услуги

Informație • ajutor • servicii

для каждой девочки и женщины,      pentru fiecare femeie  
беременной или кормящей,      gravidă sau care alăptează  
для молодёжи и подростков      pentru adolescenți și tineri  
и пожилых людей      pentru persoane vârstnice

[moldova.unfpa.org](http://moldova.unfpa.org)

Безопасное пространство для ж  
молодёжи и пожилых людей

Spațiu sigur pentru femei,  
tineri și persoane vârstnice







Spațiul

Spațiul sigur pentru femei,  
copii și persoane vârstnice

JNEPFA

ANT 179



UNFPA has vast experience in different parts of the world with safe spaces as a key strategy for the protection and empowerment of groups affected by humanitarian crises.

### **Types of Orange Safe Space:**

Static

Mobile



## Locations:

North Region: Soroca,  
Falesti, Singerei, Rezina,  
Orhei

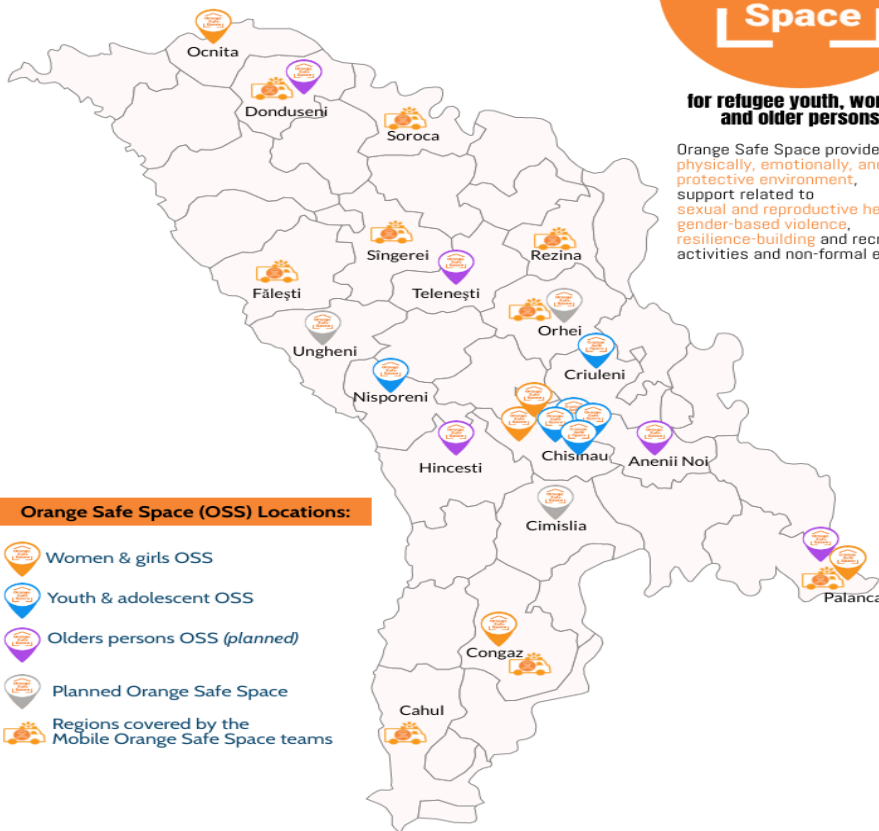
Chisinau and Chisinau  
Suburb, Taraclia, Căușeni,  
Călărași, Ungheni, Anenii  
Noi, Ialoveni

South Region: Stefan Voda,  
Cahul, UTA Gagauzia



**for refugee youth, women  
and older persons**

Orange Safe Space provides a physically, emotionally, and socially protective environment, support related to sexual and reproductive health, gender-based violence, resilience-building and recreational activities and non-formal education.



### Orange Safe Space (OSS) Locations:

-  Women & girls OSS
-  Youth & adolescent OSS
-  Older persons OSS (*planned*)
-  Planned Orange Safe Space
-  Regions covered by the Mobile Orange Safe Space teams



## **Mobile Safe Spaces:**

Findings from several assessments and available data show that most of the refugees are residing in the host community and outside of the RACs.

UNFPA designed the Mobile Safe Spaces to ensure reaching the most in need and to provide services for women, girls, young people, and older persons from both the Ukrainian refugee population and the Moldovan host community.

The mobile services are offered in communities with a high concentration of refugees and a low presence of specialized services.



### **Services:**

The mobile services are adapted from those provided at the static centers and include age-appropriate psychosocial support activities, referrals to service providers, awareness raising, and information sharing activities as well as the provision of dignity kits.

Individual PSS and case management services should only be provided in private space.

### **Mobile Team:**

Preferably, the mobile team should include social workers, community mobilizers, and a driver. The team can also include a health worker, a legal worker.





## **Key considerations:**

Coordinate with authorities and community focal points to alert the community of the mobile teams and the services.

Once the coordination is established and security clearance is obtained from the local authorities, the mobile teams travel to target communities to provide services targeting groups who are at risk or survivors of GBV who have limited access to information and/or GBV protection and response services.

Men and boys are also engaged as part of the prevention strategy. They are encouraged to participate to raise their awareness of GBV.

The team should be prepared with information on the estimated number of people in the location they are visiting, and what languages they speak. Are there any known local protection concerns?



The team should map the services in the location they are visiting and have the contact information ready to be shared with the community.

The team should meet at the end of each day and evaluate the day.

Each team has a mobile number to be provided during the activities in case some of the participants needs to ask a question or would like to get more information

The team shares the Greenline number for questions and feedback

Communication on social media platforms/ take informed consent for pictures



**Thank You!**