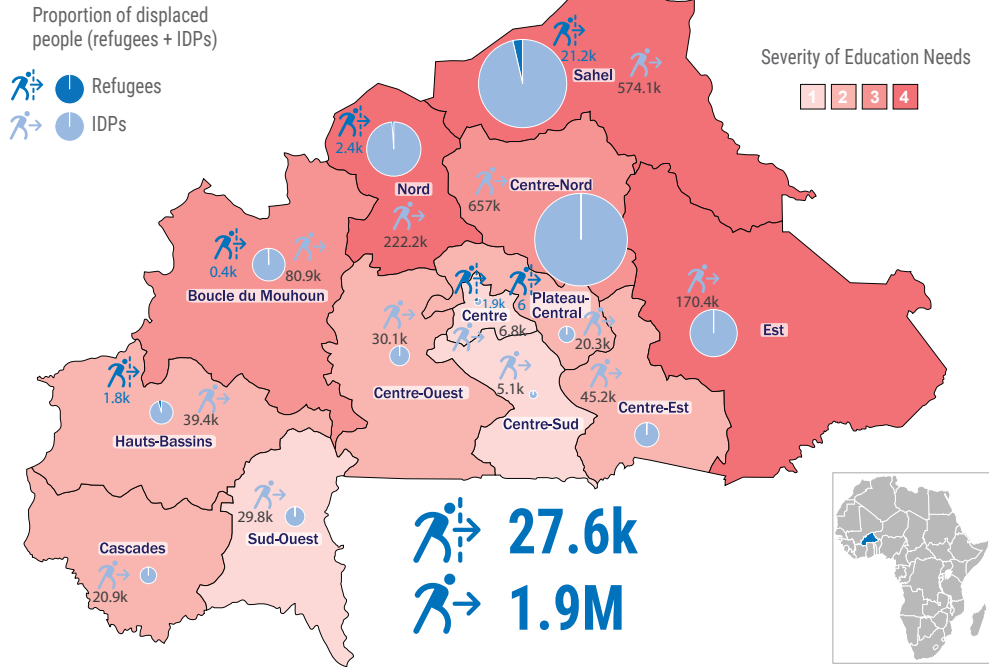
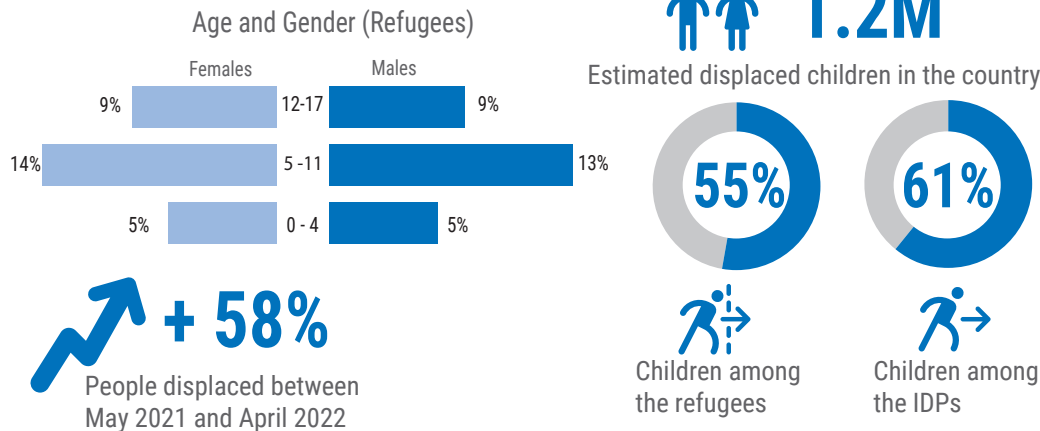


OPERATIONAL CONTEXT

Total number of Refugees and IDPs

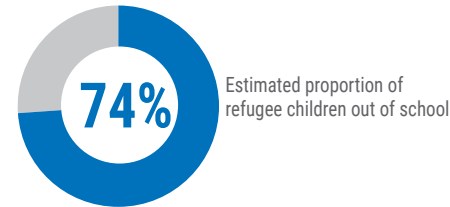


KEY FIGURES

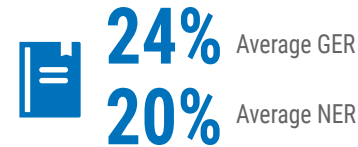


REFUGEE EDUCATION OVERVIEW

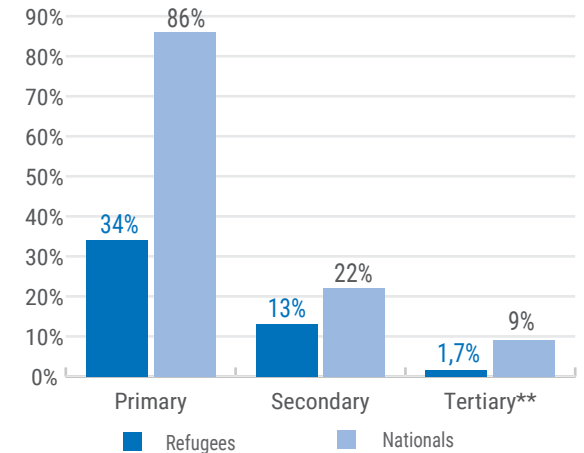
Out of school children



Average GER and NER: Primary + Secondary

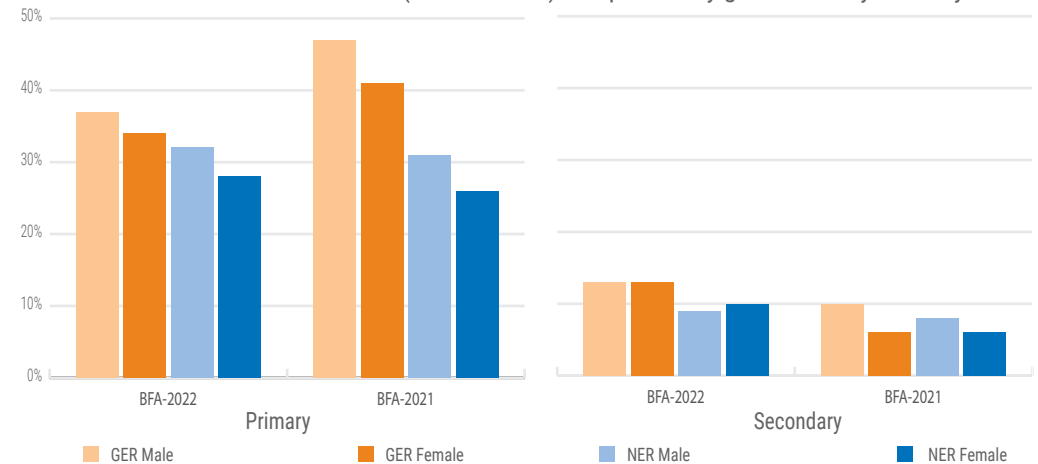


Comparison of refugee enrolment rates by school level for refugees vs nationals*



* Source: Ministry of National Education, Literacy, and the Promotion of National Languages, Ministry of Higher Education, 2020/2021 School year.
** The estimated proportion of 18-24 youth enrolled in higher education or technical and vocational education and training (TVET).

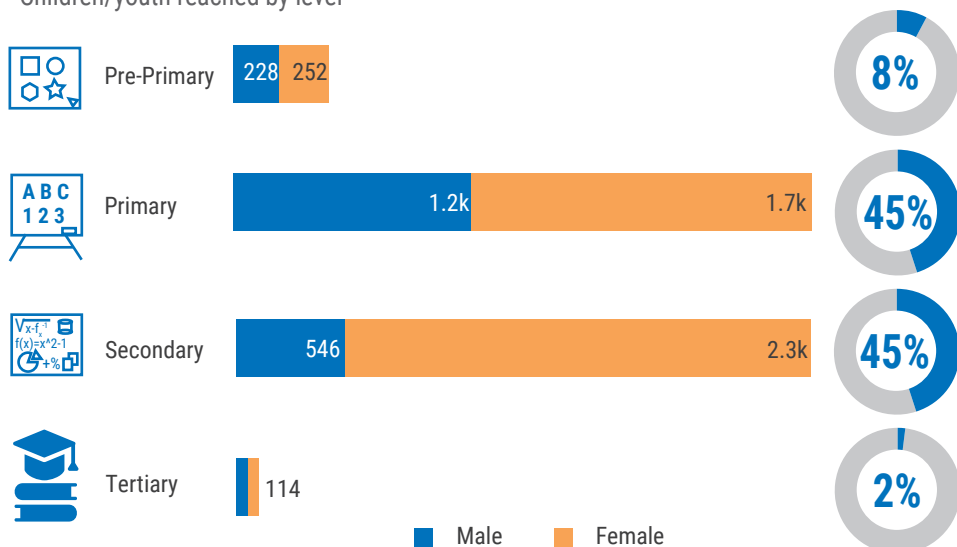
Gross and Net Enrolment Rates (GER and NER) comparison by gender and by school year



Selected country: BFA: Burkina Faso

UNHCR'S EDUCATION RESPONSE AND ASSISTANCE

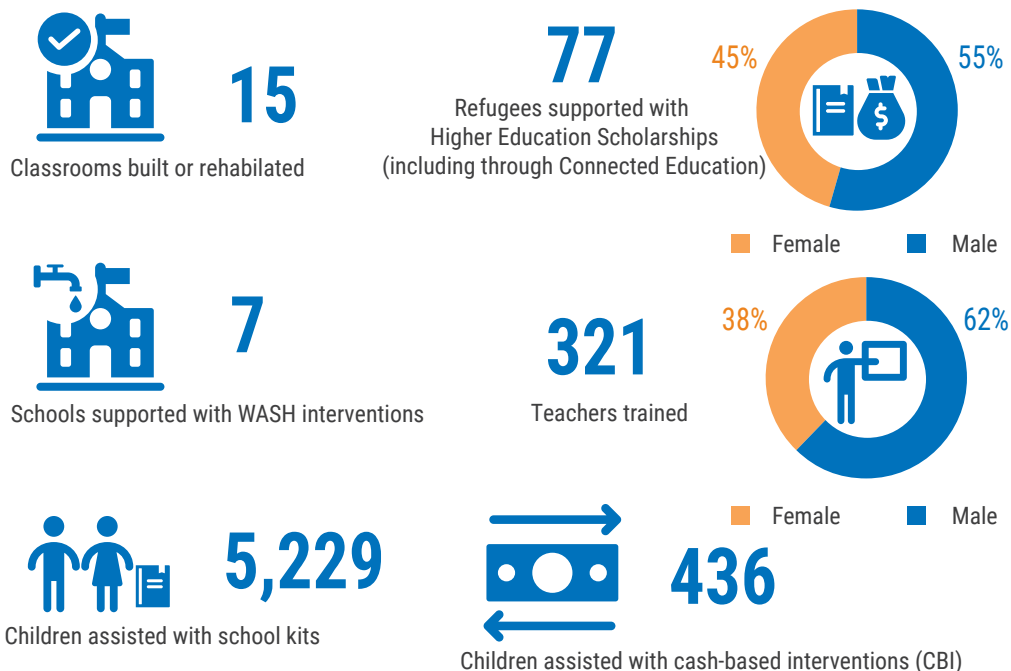
Children/youth reached by level



Children/youth reached by status



KEY ACHIEVEMENTS



KEY HIGHLIGHTS

- The closure of the Goudoubo refugee camp in November 2021 due to insecurity has had a very negative impact on the schooling of refugee children in the Sahel region. Of the 1,400 refugee children who attended schools in the camp, only 618 were able to be re-enrolled in different schools after the camp was closed. Nationwide in the 2020-21 school year, more than 10,000 refugee children were not in school.
- Close and continuous collaboration with the Ministry of Education, Literacy and Promotion of National Languages (MENAPLN), the Education Cluster and the Education Access Working Group has resulted in the provision of temporary learning spaces as well as the assignment of nearly 50 teachers to facilitate the return to school of more than 500 refugee children.
- Thanks to an innovative partnership between UNHCR, the Agence Universitaire de la Francophonie (AUF) and SIMPLON, 11 refugee students have been trained for 9 months in digital skills and competencies to facilitate their professional integration.

Sources: Education data: RBWCA data consolidation as of August 2022; Assistance data: UNHCR and partners data consolidation.