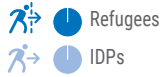


OPERATIONAL CONTEXT

Proportion of displaced people (refugees + IDPs)

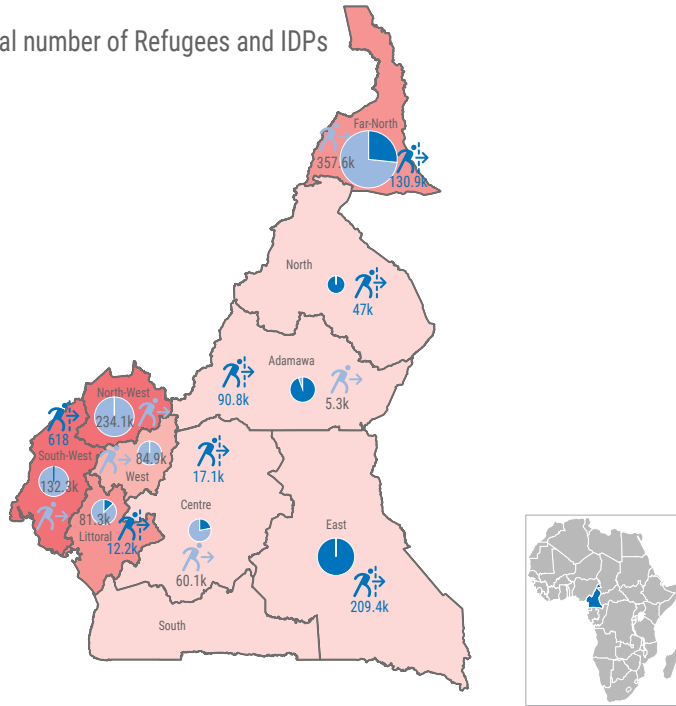


Severity of Education Needs



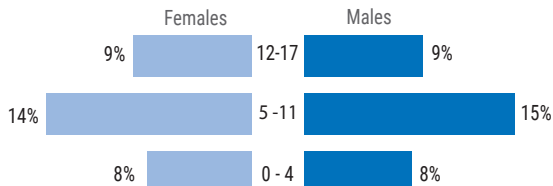
508k
955.5k

Total number of Refugees and IDPs



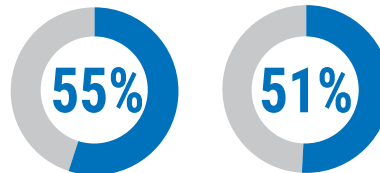
KEY FIGURES

Age and Gender (Refugees)



487.3k

Estimated displaced children in the country



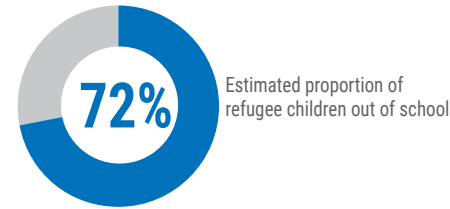
Children among the refugees

Children among the IDPs

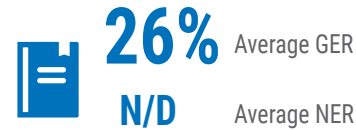
+2.5%
People displaced between August 2021 and July 2022

REFUGEE EDUCATION OVERVIEW

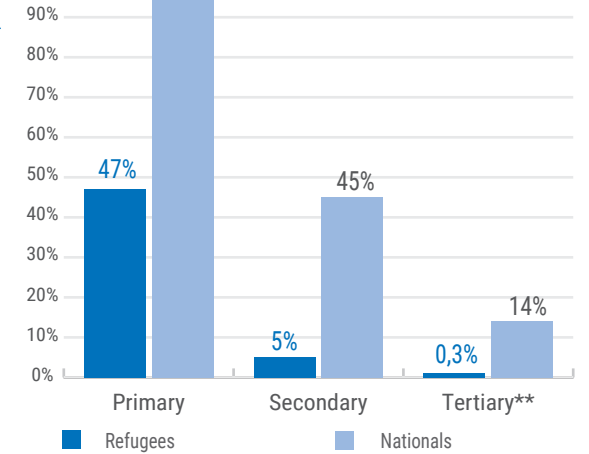
Out of school children



Average GER and NER: Primary + Secondary



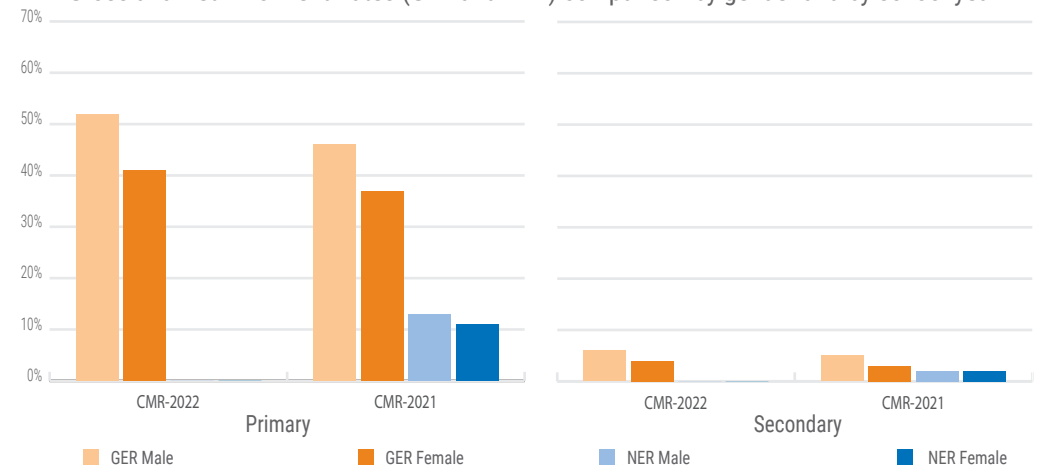
Comparison of refugee enrolment rates by school level for refugees vs nationals*



* Source: UNESCO - Primary, 2019; Secondary, 2021; Tertiary, 2018. <https://uis.unesco.org/en/country/cm>

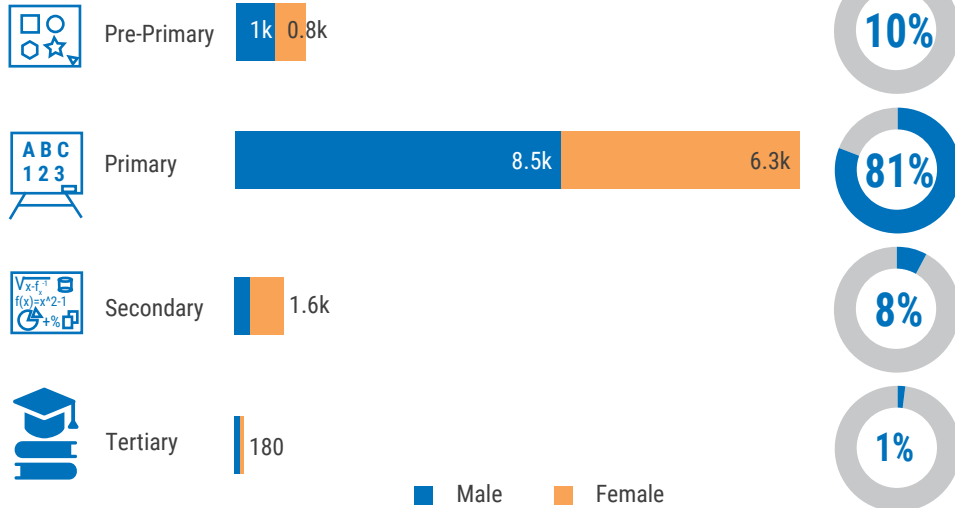
** The estimated proportion of 18-24 youth enrolled in higher education or technical and vocational education and training (TVET).

Gross and Net Enrolment Rates (GER and NER) comparison by gender and by school year



UNHCR'S EDUCATION RESPONSE AND ASSISTANCE

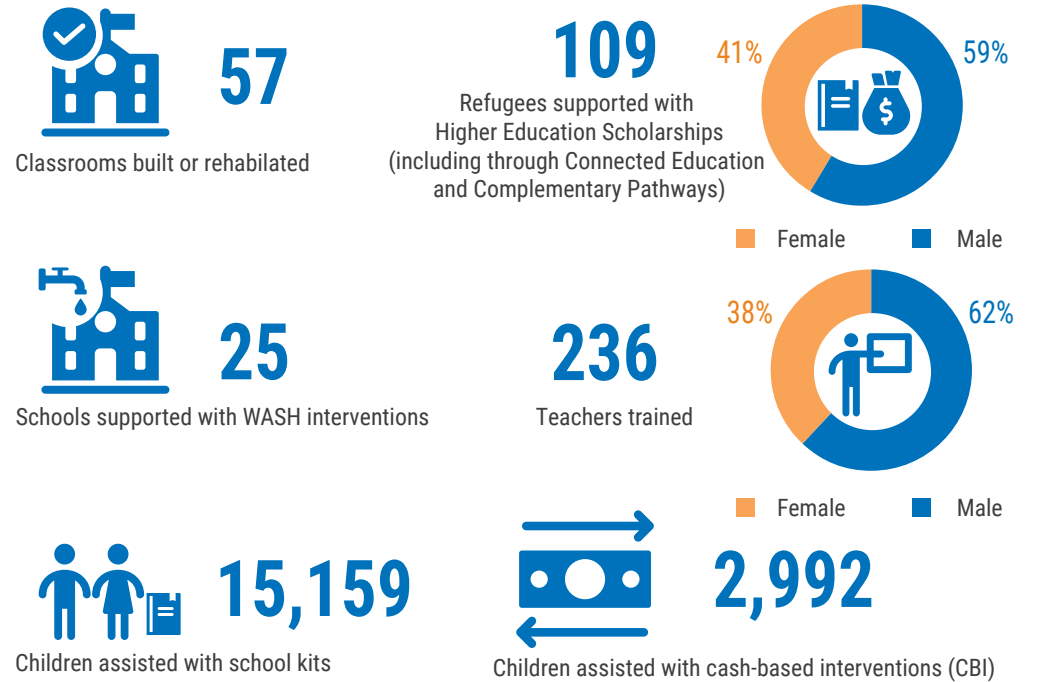
Children/youth reached by level



Children/youth reached by status



KEY ACHIEVEMENTS



KEY HIGHLIGHTS

- Since the 2021-22 school year, the conditional payment of education assistance is done through cash-based interventions. This allows vulnerable students to pay the necessary fees for their schooling.
- Thanks to the partnership between UNHCR and the Agence Universitaire de la Francophonie (AUF), 5 refugee students were selected to follow open and distance learning courses at Master's level within the Connected University Francophone Corridors project.
- New opportunities for complementary education pathways were opened to refugee students in Cameroon and 1 student was selected to pursue Master's studies in France. More education opportunities in third countries will be open for the upcoming school year, including in France, Italy and Germany.

Sources: Education data: RBWCA data consolidation as of August 2022; Assistance data: UNHCR and partners data consolidation.