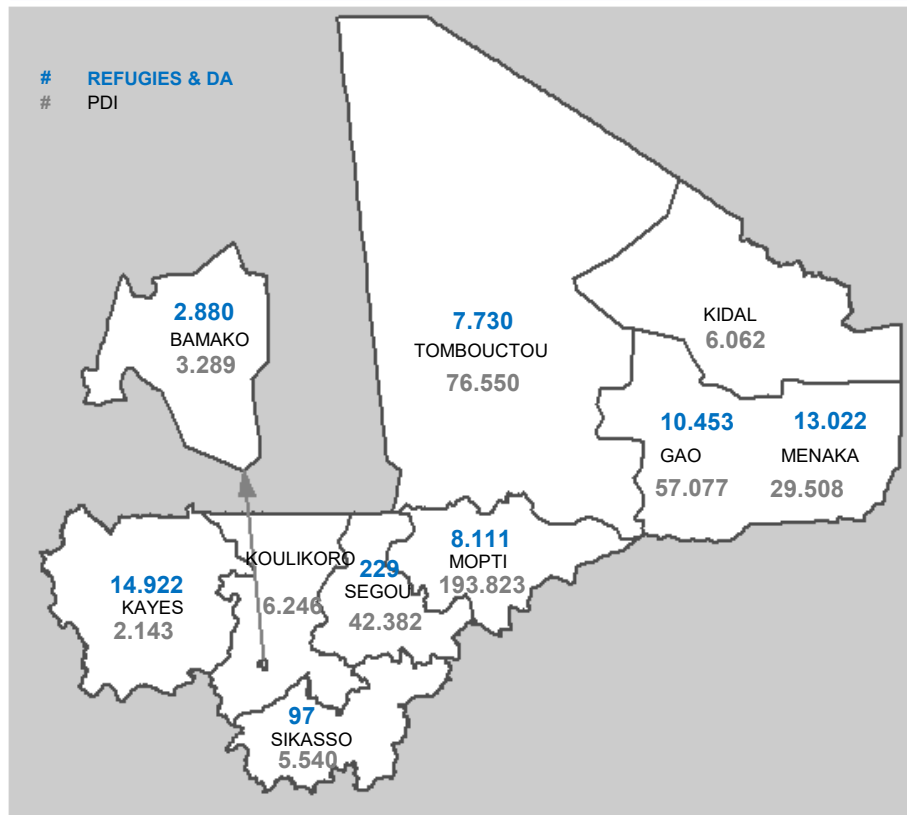


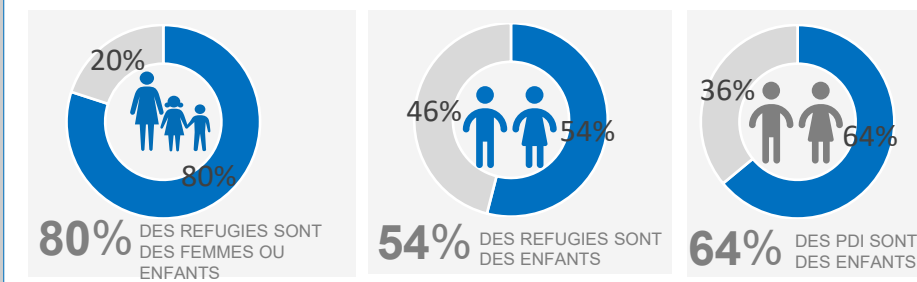
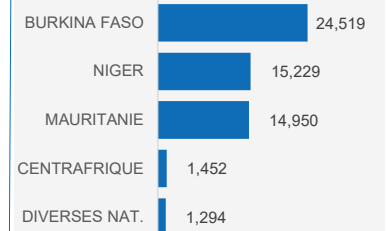
1.260.468 PERSONNES RELEVANT DU HCR

57.444 REFUGIES | **84.806** RAPATRIES

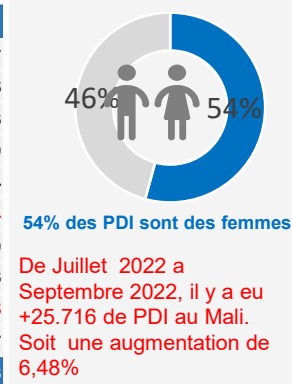
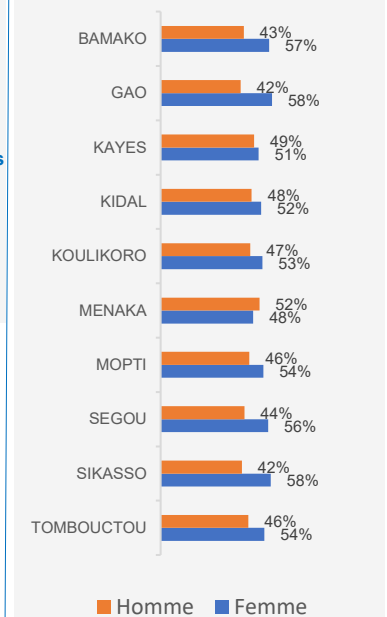
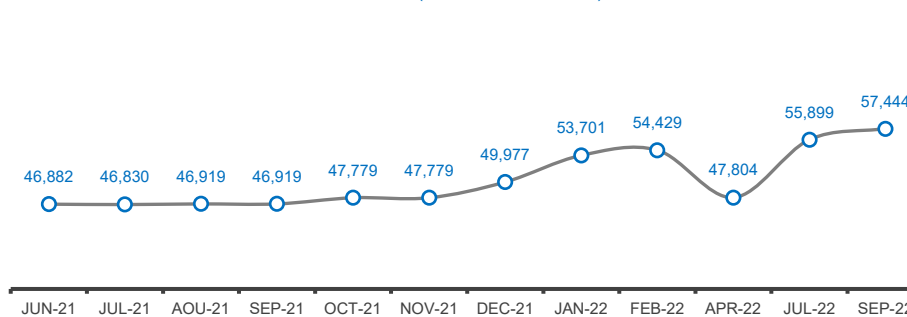
422.620 PDI | **695.598** RETOURNES


REFUGIES ET DEMANDEURS D'ASILE AU MALI

	Menage	0-4 ans		5 - 11 ans		12 - 17 ans		18-59 ans		+60 ans		TOTAL
		FEMME	HOMME	FEMME	HOMME	FEMME	HOMME	FEMME	HOMME	FEMME	HOMME	
KAYES	3,298	753	765	1,745	1,838	1,413	1,356	3,175	3,217	251	409	14,922
MENAKA	3,082	1,259	1,347	2,001	2,058	775	728	2,614	1,822	204	214	13,022
GAO	2,323	598	618	1,687	1,564	724	661	2,304	1,887	152	258	10,453
MOPTI	4,519	893	915	659	498	177	172	3,010	1,257	337	193	8,111
TOMBOUCTOU	807	615	659	996	1,263	524	510	1,843	1,051	124	145	7,730
BAMAKO	1,451	80	100	212	208	181	189	795	992	65	58	2,880
SIKASSO	49	1	5	7	8	8	4	20	37	3	4	97
SEGOU	94	20	30	22	20	7	7	63	46	3	11	229
TOTAL	15,623	4,219	4,439	7,329	7,457	3,809	3,627	13,824	10,309	1,139	1,292	57,444


PRINCIPAUX PAYS D'ORIGINE

ANALYSE DES CHIFFRES DES PDI

REGION	JUILLET 2022	SEPTEMBRE 2022	Ecart
MOPTI	189,356	193,823	4,467
TOMBOUCTOU	74,605	76,550	1,945
GAO	54,731	57,077	2,346
SEGOU	35,702	42,382	6,680
MENAKA	22,944	29,508	6,564
KOULIKORO	6,450	6,246	-204
SIKASSO	5,540	5,540	0
BAMAKO	3,283	3,289	6
KAYES	2,188	2,143	-45
KIDAL	2,105	6,062	3,957
TOTAL	396,904	422,620	25,716


PDI PAR REGION & PAR SEXE

EVOLUTION DES CHIFFRES DES REFUGIES (12 DERNIERS MOIS)

EVOLUTION DES CHIFFRES DES PDI (12 DERNIERS MOIS)
