



Registered Population **878,027**

Households **207,878**

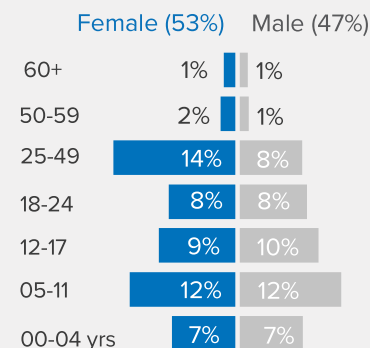
875,802 Refugees 2,225 Asylum seekers

4 Average family size

Country of origin

	Individual	%
South Sudan	407,382	46%
Somalia	251,126	29%
Eritrea	162,011	19%
Sudan	48,445	5%
Kenya	4,034	<1%
Yemen	2,467	<1%
DR Congo	1,061	<1%
Syrian Arab Republic	668	<1%
Other	833	<1%
Total	878,027	

Demography



Children (0 -17 yrs) **510,305 (58%)**

Women & Children **723,752 (82%)**

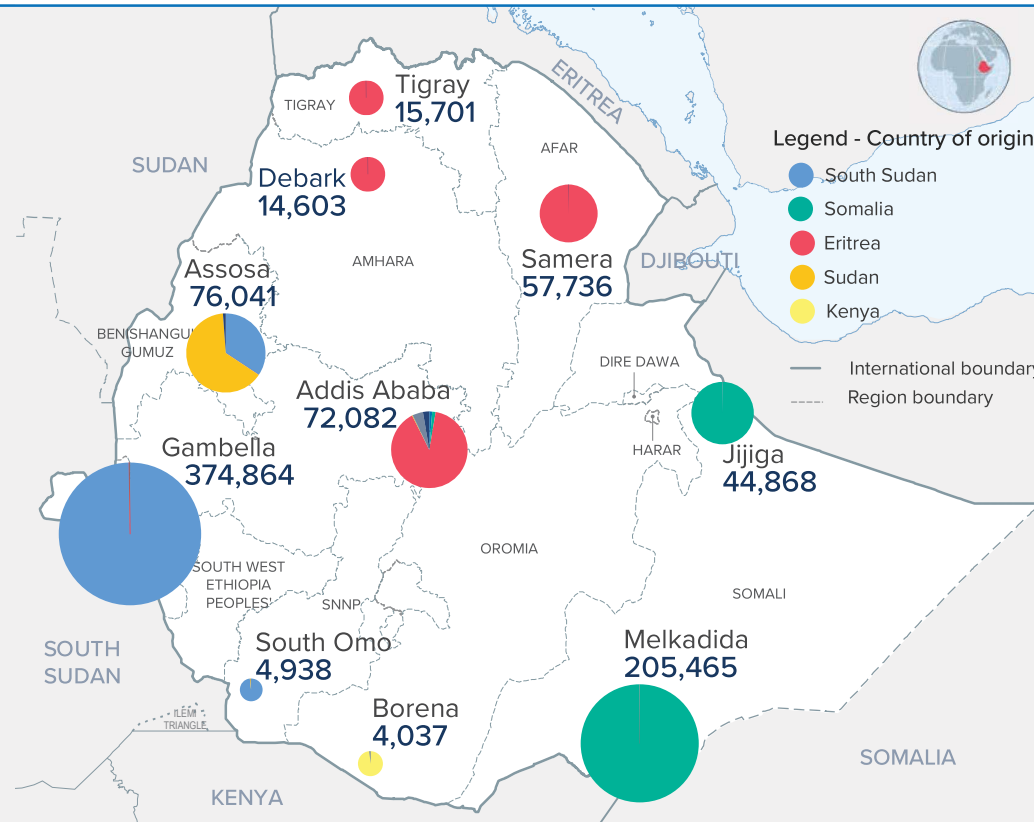
Persons with Disabilities **2,261**

Adolescents and Youth (12-24 yrs) **295,974 (34%)**

Women (18-55 yrs) **197,343 (23%)**

Unaccompanied and Separated Children **40,674**

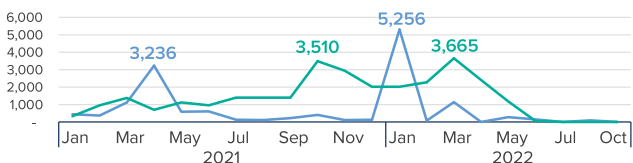
Percentages represent proportion out of the total registered population



The boundaries and names shown and the designations used on this map do not imply official endorsement or acceptance by the United Nations.

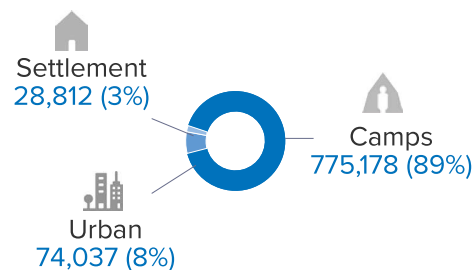
New arrival trends (Individuals)

Year of arrival	Country of origin				
	South Sudan	Somalia	Sudan	Yemen	Other
2021	7,478	18,144	617	143	145
2022 (as of October)	8,652	11,593	309	1	6
Total	16,130	29,737	926	144	161



New arrival trend top 2 countries of origin

Type of accommodation



Settlements: refugees living amongst host community

Total population trend

