



**880,021**  
Refugees and Asylum seekers

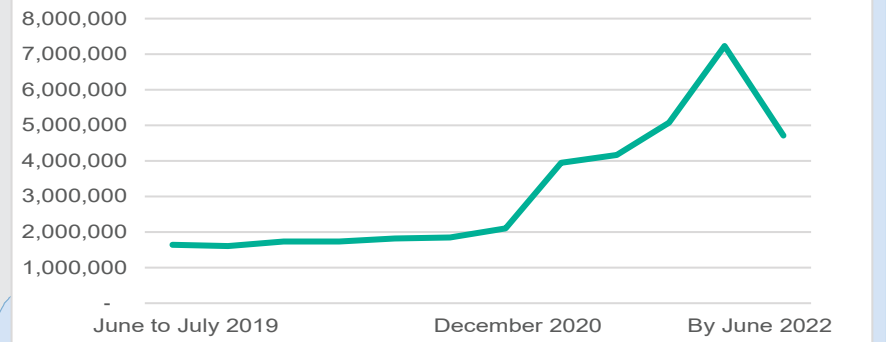
**2,716,121**  
IDPs\*

**1,995,818**  
IDPs Returnees\*

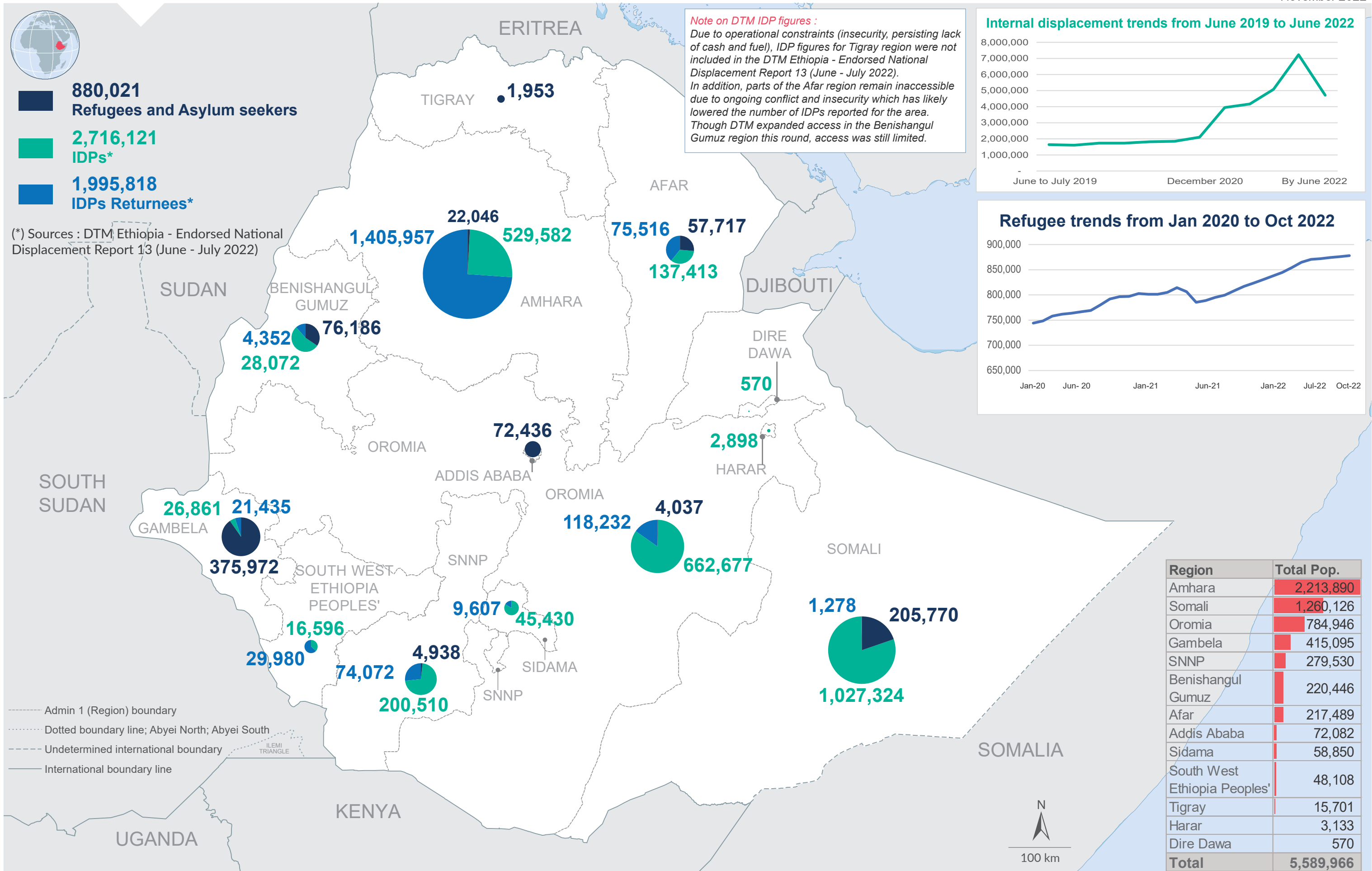
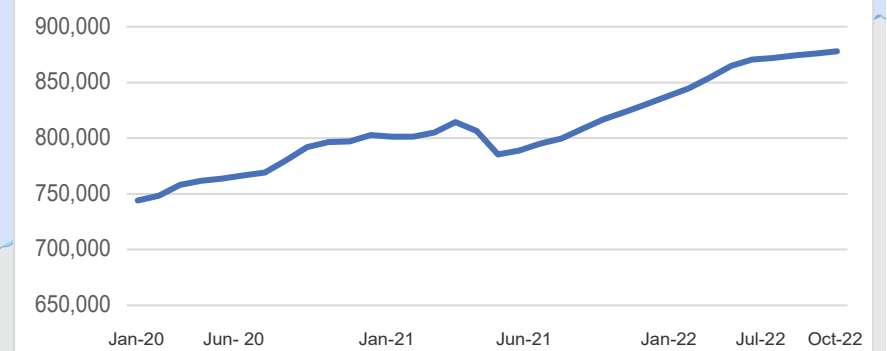
(\*) Sources : DTM Ethiopia - Endorsed National Displacement Report 13 (June - July 2022)

**Note on DTM IDP figures :**  
Due to operational constraints (insecurity, persisting lack of cash and fuel), IDP figures for Tigray region were not included in the DTM Ethiopia - Endorsed National Displacement Report 13 (June - July 2022). In addition, parts of the Afar region remain inaccessible due to ongoing conflict and insecurity which has likely lowered the number of IDPs reported for the area. Though DTM expanded access in the Benishangul Gumuz region this round, access was still limited.

**Internal displacement trends from June 2019 to June 2022**



**Refugee trends from Jan 2020 to Oct 2022**



Region	Total Pop.
Amhara	2,213,890
Somali	1,260,126
Oromia	784,946
Gambela	415,095
SNNP	279,530
Benishangul Gumuz	220,446
Afar	217,489
Addis Ababa	72,082
Sidama	58,850
South West Ethiopia Peoples'	48,108
Tigray	15,701
Harar	3,133
Dire Dawa	570
<b>Total</b>	<b>5,589,966</b>

----- Admin 1 (Region) boundary  
 ..... Dotted boundary line; Abyei North; Abyei South  
 - - - - Undetermined international boundary  
 ——— International boundary line



The boundaries and names shown and the designations used on this map do not imply official endorsement or acceptance by the United Nations. \* Final boundary between the Republic of Sudan and the Republic of South Sudan; and between Ethiopia and Somalia has not yet been determined.