

SITUATION OVERVIEW

Under the Emergency Shelter and Non-Food-Items (ES/NFI) Cluster, UNHCR continues to respond to the shelter and basic core relief item needs of Internally Displaced Persons (IDPs) in Northern Ethiopia and other parts of the country. ES/NFI support is being provided to the population affected by displacement and drought, with special emphasis on the needs of women, children, people with disabilities and the most vulnerable or at risk.

UNHCR response ranges from emergency relief to IDPs who are residing in temporary accommodation centers, within the host communities and in formal sites to promotion of durable solutions for families who have returned and those that have relocated.

As of November, UNHCR has reached 836,414 persons with ES/NFI assistance, representing 34% of the total of 2,440,000 individuals reached by the joint ES/NFI cluster in Ethiopia.

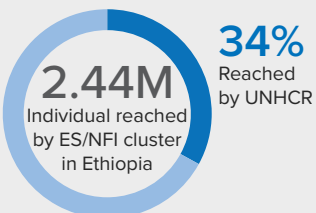
KEY FIGURES

836,414

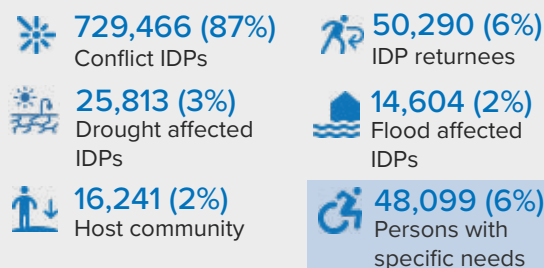
Individuals reached with ES/NFI Assistance

188,565

Households reached



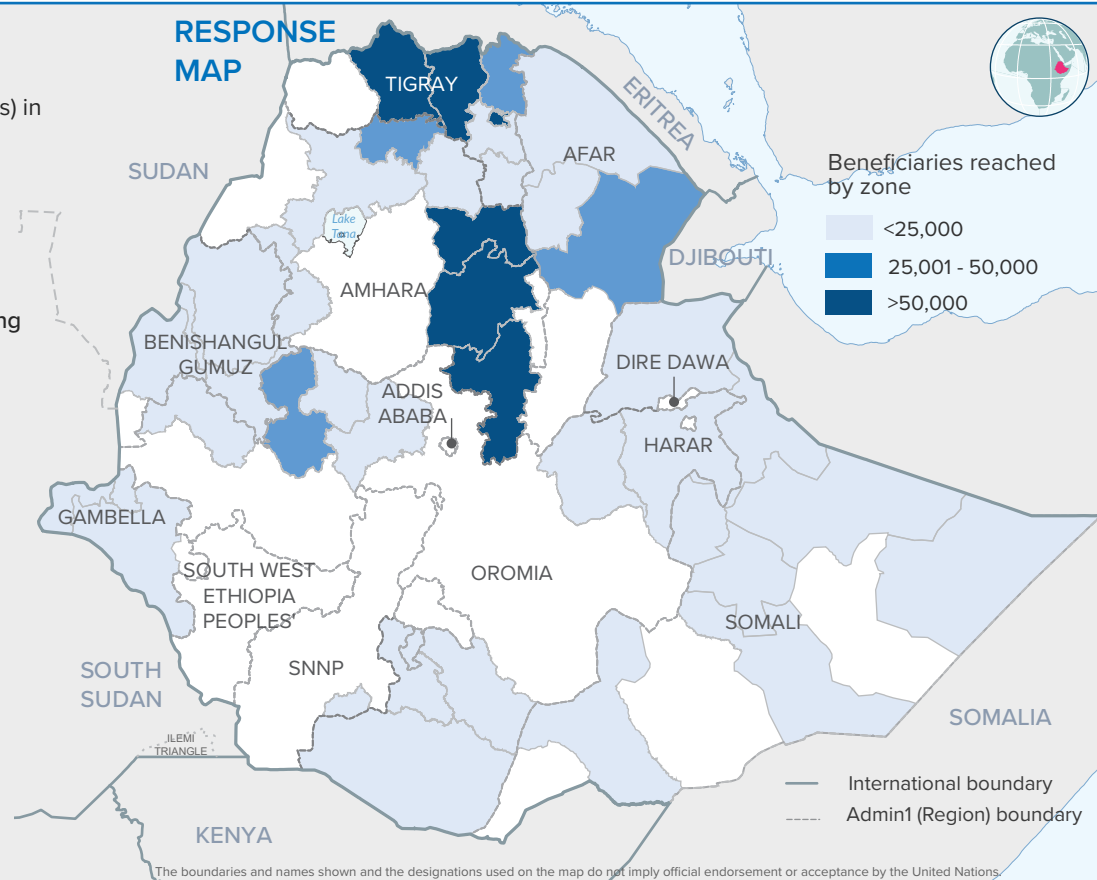
TYPE OF BENEFICIARY REACHED



Trend beneficiary reached



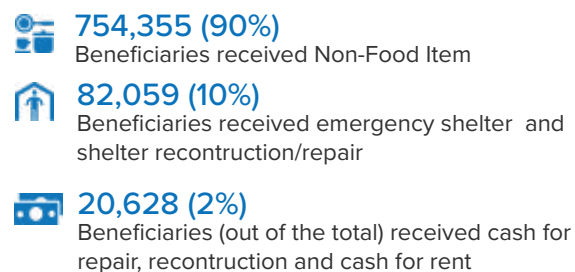
RESPONSE MAP



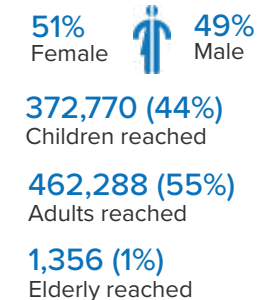
TYPE OF BENEFICIARY REACHED BY REGION

Region	Conflict IDPs	IDP returnees	Drought affected IDPs	Host community	Flood affected IDPs	Total	%
Amhara	291,059	19,205		4,466		314,730	38%
Tigray	250,345	18,589		11,775		280,709	34%
Oromia	71,228	3,041	6,507			80,776	10%
Afar	57,573	5,951				63,524	8%
Somali	26,881	1,524	18,696			47,101	6%
Benishangul-Gumuz	32,320	1,980				34,300	4%
Gambella					14,604	14,604	2%
SNNP	60	-	610			670	0%
Total	729,466	50,290	25,813	16,241	14,604	836,414	100%

BENEFICIARIES BY TYPE OF ACTIVITY



DEMOGRAPHIC



PARTNERS

AAH-I, ANE, DEC, EECMY, ERCS, IHS, OSSHD, PAPDA

DONORS

