

Total Arrivals from Ethiopia



22,190

Individuals Registered
Source: UNHCR, COR
As of 31 December 2022



9,274

Households Registered

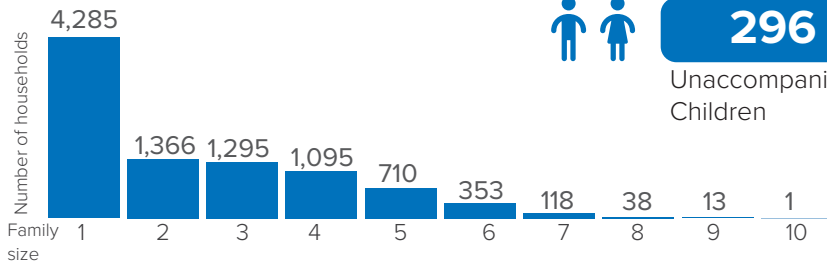


Relocated from Hamdayet



24 Individuals

Family Size



Introduction:

In response to the influx of Ethiopian refugees into eastern Sudan, UNHCR and the Government of Sudan, in collaboration with other partners, opened Tunaydbah refugee camp in Gedaref State on 3 January 2021 to accommodate the refugees relocated from the transit centres at the border to this site. The majority of the refugees in Tunaydbah camp are from the Tigray region of Ethiopia. As of end December 2022, the camp accommodates 22,190 refugees, all of whom are biometrically registered and provided with assistance. The dashboard below presents the population profile for Tunaydbah camp.

Persons With Specific Needs



2,553

Individuals



296

Unaccompanied/Separated Children

Country of Origin

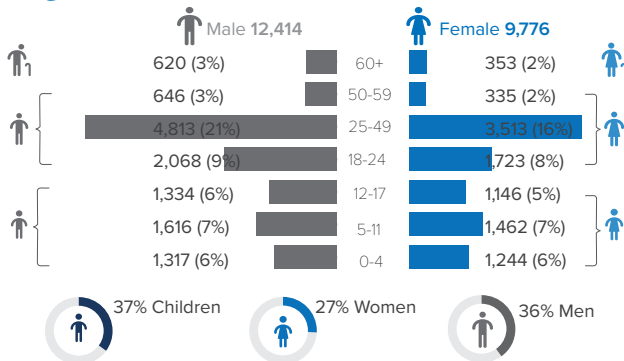
22,183

Ethiopians

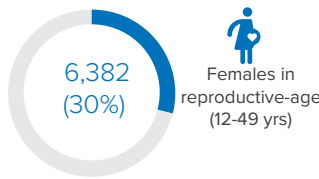
7

Eritreans

Age-Gender Breakdown

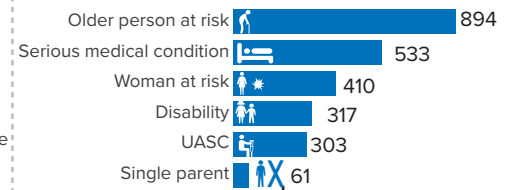


Reproductive- Age Women/Girls



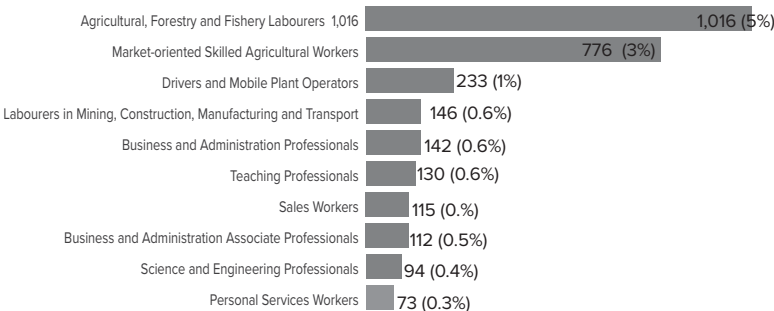
Percentages related to total population

Specific Needs (top 5)



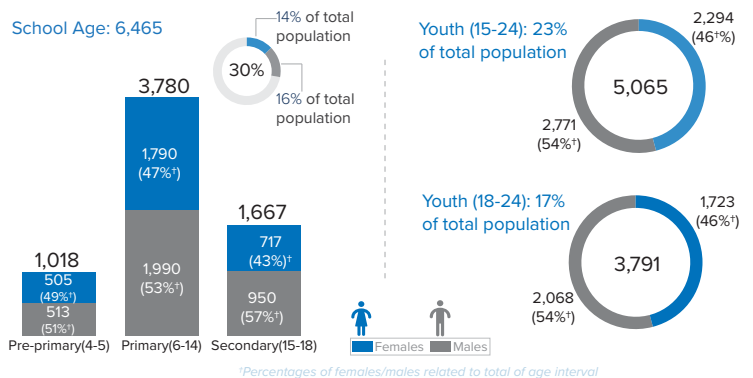
Source: ProGres v4/Rapp
*UASC: Unaccompanied or separated child

Occupation (Top 10)

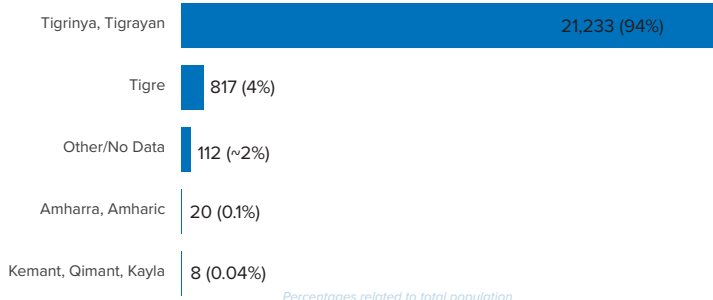


*Occupation and skills of population aged 18 and above Percentages related to total population

School Age Children and Youth



Ethnicity (Top 5)



Top 5 Regions of Origin (Ethiopia)

