



Registered Population **882,276**

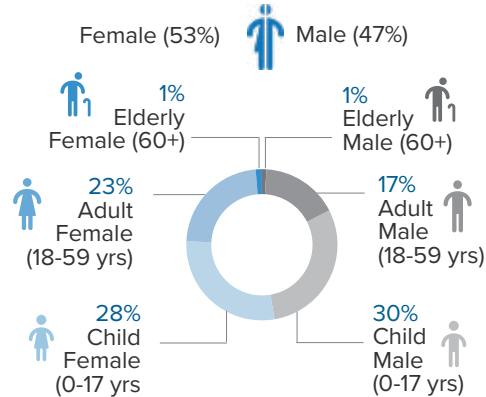
Households **208,119**

880,056 Refugees **2,220** Asylum seekers

4 Average family size

Country of origin & Demography

	Individual	%
South Sudan	409,621	46%
Somalia	251,895	29%
Eritrea	162,993	19%
Sudan	48,693	5%
Kenya	4,034	
Yemen	2,476	
DR Congo	1,060	
Syrian Arab Republic	668	
Other	836	
Total	882,276	



Children (0 -17 yrs) **513,921 (58%)**

Women & Children **727,722 (82%)**

Persons with Disabilities **2,261**

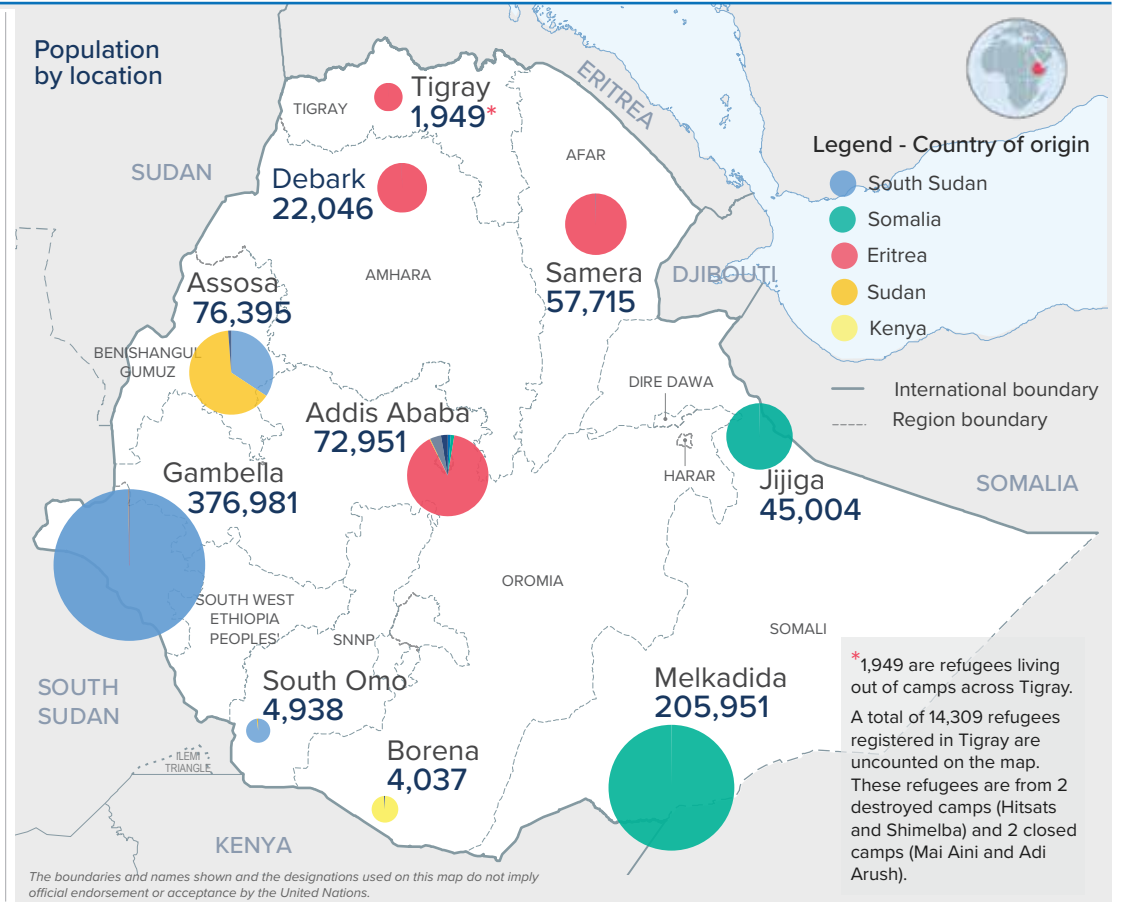
Adolescents and Youth (12-24 yrs) **296,567 (34%)**

Women (18-55 yrs) **197,688 (23%)**

Unaccompanied and Separated Children **40,674**

Percentages represent proportion out of the total registered population

Population by location



Population by type of accomodation

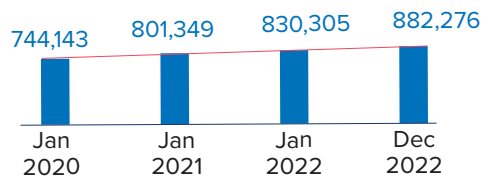
Camps **772,024 (88%)**

Urban **83,361 (9%)**

Sites & Settlements **24,636 (3%)**

Settlements: refugees living amongst host community

Total population trend



Population by period of arrival

Before 1992	0.4%
1992-2001	1.3%
2002-2012	20.8%
2013-2022	77.5%

77.5% of the refugee population arrived during the last 10 years

New arrivals per month and per country of origin

