



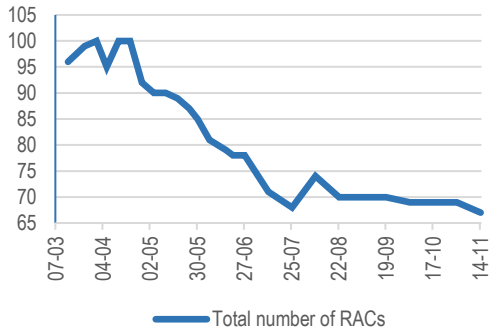
**Moldova: Refugee Accommodation Centre (RAC)
Weekly Needs Monitoring**

Update as of 14.11.2022

Background & Methodology

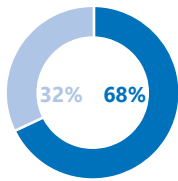
- Key informant interviews were conducted with purposefully accepted RAC focal points who reported on the situation in 62 centres (out of 67 active on November 14th)
- Data collection took place on October 31st & November 14th through phone interviews
- Findings should be considered indicative

Weekly RAC numbers



Reported RAC capacity

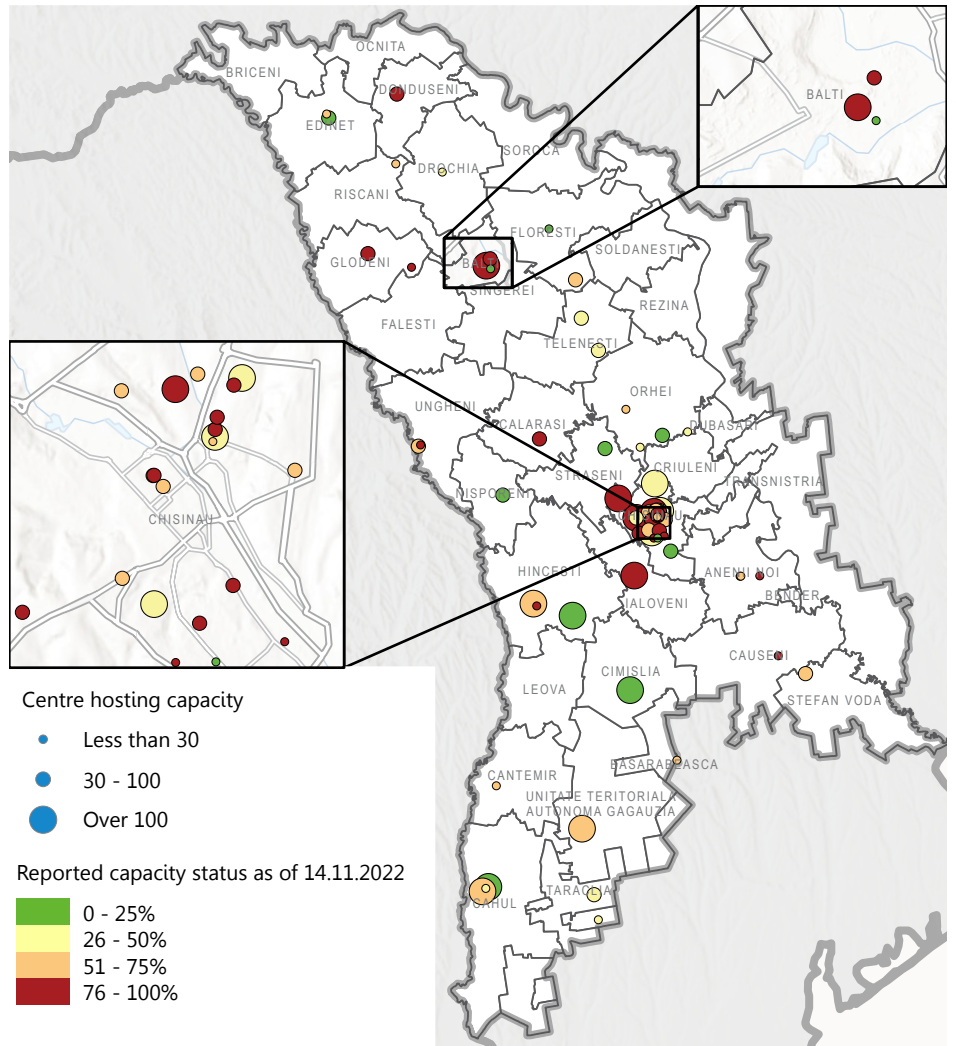
4061 available places in 62 RACs



% of assessed RACs with the following vulnerable groups present

Persons with disabilities	47%
Persons with serious medical conditions	19%
Pregnant and lactating women	5%

Locations of RACs



Source: ANAS, Registry of Refugee Accommodation Centres, 14.11.2022

Top three RAC needs as of 14.11.22

Cleaning items	37%
Hygiene items	35%
Clothing items	27%

% of RACs by hosting capacity (out of 62 RACs)

20-50 people	57%	24%	19%
		51-100 people	More than 100 people

Key information

Proportion of residents by gender

Female	63%
Male	37%

Proportion of residents by age

Infants 0-2 years old	4%
Children 2-18 years old	35%
Older persons (65+)	11%
People 19-65 years old	50%

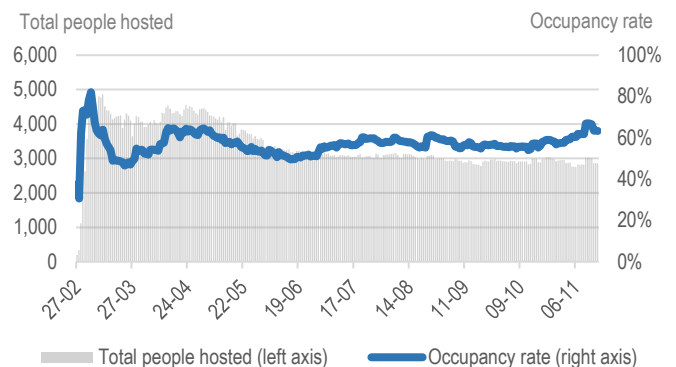
Proportion of residents by nationality

Ukrainians	78%
Other	22%

Round-specific findings

- In the last 4 weeks, 2 RACs closed. The total number of residents decreased by 58.
- Requests for items increased overall in categories such as hygiene, cleaning, first aid and baby products, after slowly decreasing mid-month.
- Number of people returning to RACs from the host community is still low, standing at 1%.

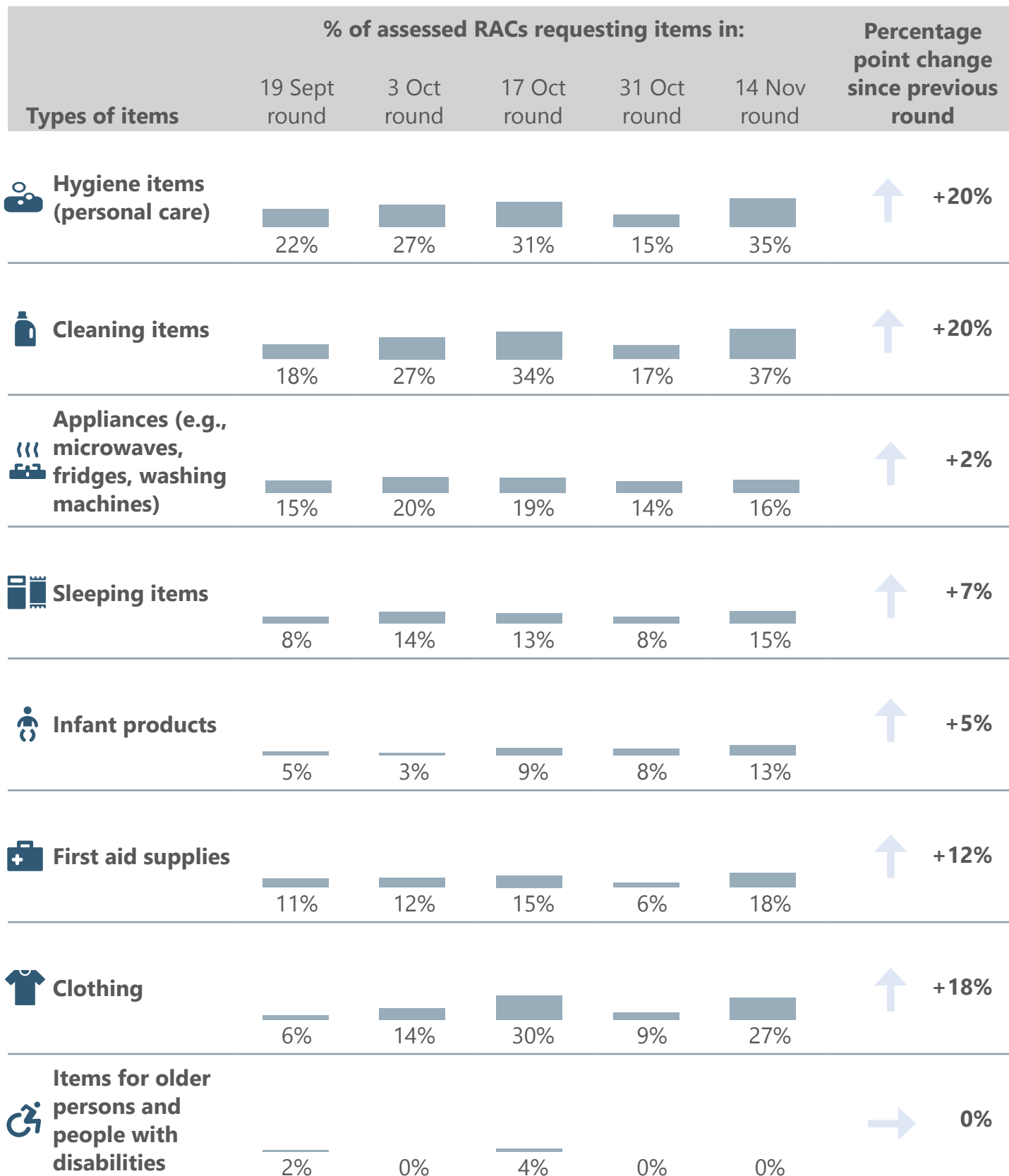
People hosted in RACs since receiving approval to open



Source: ANAS, Registry of Refugee Accommodation Centres, 14.11.2022

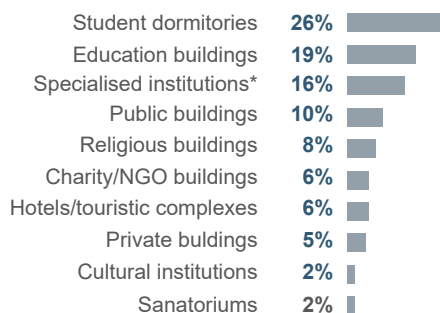
Most Requested Items from RACs

Below is an overview of items most frequently requested by RACs during structured phone interviews with KIs. It should be noted that in view of the high rotation of refugees going in and out of RACs, the requested items are based on ongoing requirements for normal RAC functioning. **These requests do not necessarily mean RACs do not currently have the requested items. Rather, these requests may be based on forward-looking considerations about maintaining steady supplies. Hot meals have been distributed by the government, UN agencies, NGOs and local organisations, and no major shortages of essential food items have been reported.**



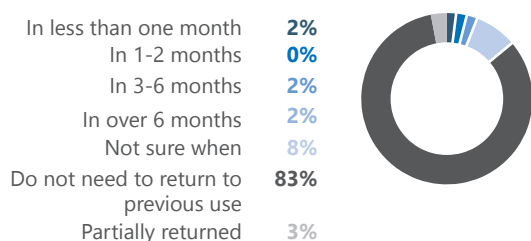
Building Information

% of assessed RACs by type of building



*Specialised institutions include facilities normally used to provide services for people with disabilities or mental health issues

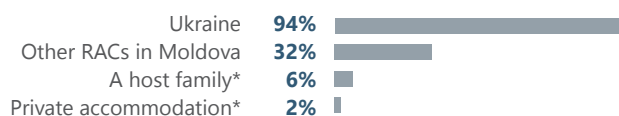
14% of assessed RACs reportedly need to return to their previous usage, in the following timeframe:



526 Number of people involved in RAC activities at the assessed RACs (employed staff, volunteers, etc.)
8 Per centre on average

Origins and intentions

Most frequent places of origin of people arriving at the RACs as reported by KIs ¹



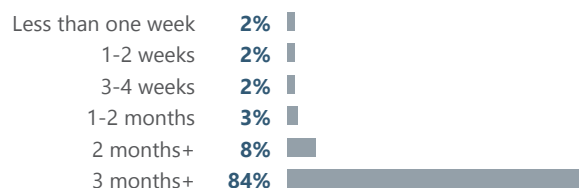
* An estimated total of 36 people (1%)

Most frequent destination of people leaving the RACs as reported by KIs ¹



¹ Multiple responses permitted. The sum might exceed 100%.

Average stay in the RACs



District-Level Information

District	#RACs	Capacity	# People hosted	Spaces available	Capacity level
Anenii Noi	3	90	80	10	89%
Balti	3	246	211	35	86%
Basarabasca	1	30	21	9	70%
Cahul	3	206	120	86	58%
Calarasi	1	70	54	16	77%
Causeni	1	20	18	2	90%
Chisinău	24	1781	1289	492	72%
Cimislia*					
Comrat	2	130	106	24	82%
Criuleni	1	220	76	144	35%
Donduseni	1	70	76	-6	109%
Drochia	1	20	9	11	45%
Edinet*	1	22	16	6	73%
Floresti	2	68	31	37	46%
Glodeni	2	122	125	-3	102%
Hincesti*	2	170	46	124	27%
Ialoveni	1	160	130	30	81%
Nisporeni*					
Orhei	4	120	44	76	37%
Riscani	1	30	20	10	67%
Stefan Voda	1	81	52	29	64%
Straseni*	1	160	123	37	77%
Taraclia	2	55	22	33	40%
Telenesti	2	90	37	53	41%
Ungheni	2	100	74	26	74%

Source: ANAS, Registry of Refugee Accommodation Centres, 14.11.2022

* This table includes only data based on Centres that have been interviewed in this round, therefore 1 RAC in each of these districts is not included