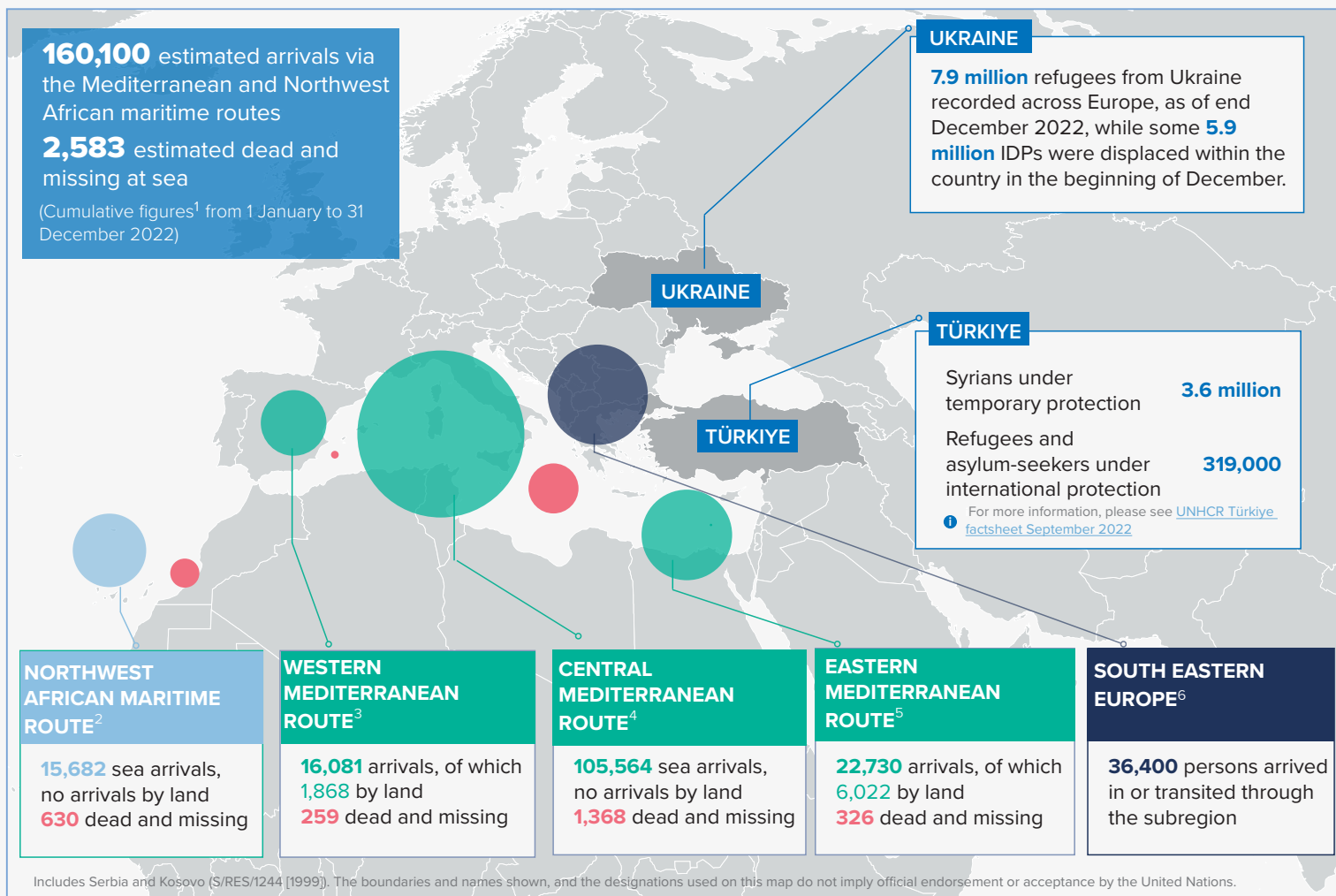


## ARRIVALS AND DISPLACED POPULATIONS: KEY FIGURES AND TRENDS

### ▶ DECEMBER FIGURES



### UKRAINE SITUATION

The war in Ukraine triggered a major increase in humanitarian needs as a result of the mass internal displacement and refugee outflows. As of 31 December 2022, 7,900,139 refugees from Ukraine were recorded across Europe, while 4,896,361 registered for Temporary Protection or similar national protection schemes. Within Ukraine, some 5.9 million people were internally displaced beginning of December.<sup>7</sup>

### ▶ Ukraine situation key figures as of 31 December 2022

**7,900,139**

Refugees from Ukraine recorded across Europe

**4,896,361**

Refugees from Ukraine registered for Temporary Protection or similar national protection schemes in Europe

For more information, please visit the [Operational Data Portal for the Ukraine Refugee Situation](#)

UNHCR and partners implement [Protection Profiling and Monitoring](#) exercises to regularly collect and analyze data about the profiles, protection risks and needs of refugees from Ukraine and monitor changes. UNHCR rolled out a revised questionnaire in October 2022, conducting more than 15,000 interviews in Hungary, Poland, Republic of Moldova, Romania and Slovakia to date. Although results indicate that a higher proportion of refugees are employed and have access to housing compared to [previous months](#), the majority report having urgent needs of material assistance, employment opportunities, food security and access to healthcare. Almost half of the respondents with children report not being able to access childcare, some 40% of households with school-age children report at least one child not attending education in the host country and some 25% report difficulty accessing healthcare.

## ARRIVALS IN EUROPE VIA THE MEDITERRANEAN AND NORTHWEST AFRICAN MARITIME ROUTES

Between January and December 2022, some 160,100 refugees and migrants arrived in Europe via the Mediterranean and Northwest African maritime routes, a 30% increase compared to 2021. In December 2022, arrivals increased by 12% compared to November this year, and by 54% compared to December 2021.

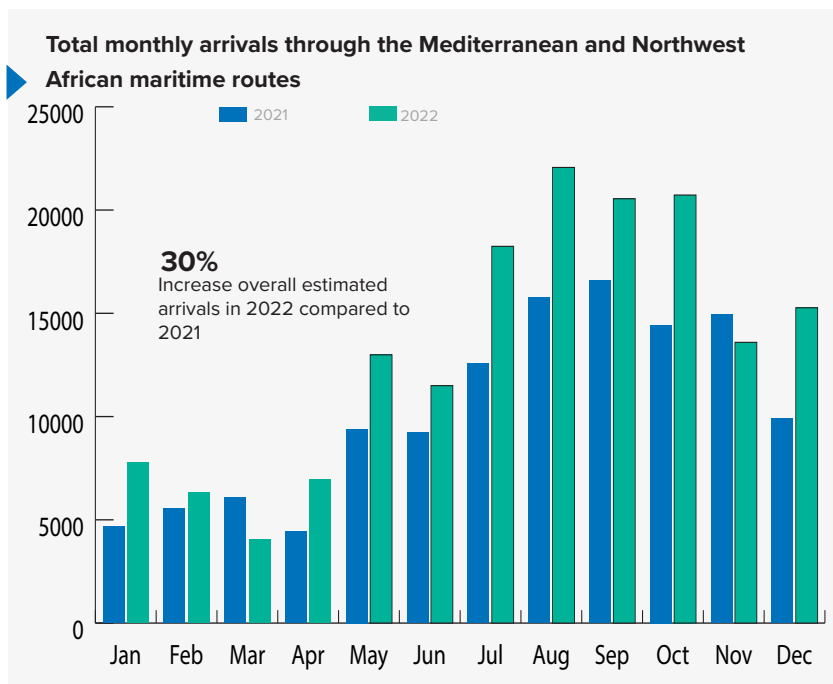
Arrivals in Italy increased by 19% in December compared to November, and by 138% compared to December 2021. Out of some 10,800 refugees and migrants who arrived in Italy in December, a similar number reportedly departed from Libya and Tunisia (45% each), and some 8% from Türkiye. In December, arrivals in Italy from Tunisia were 57% higher than November, while arrivals from Libya and Türkiye were comparable.

Some 3,200<sup>8</sup> refugees and migrants who departed from Libya in December were intercepted or rescued by Libyan authorities and disembarked back in Libya, a 57% increase compared to November. According to available data, most people departing from Libya in 2022 were from Bangladesh, Egypt, the Syrian Arab Republic, and Sudan while people arriving in Italy from Libya were mainly from Egypt, Bangladesh, and Syrian Arab Republic. In addition, some 400 refugees and migrants arrived in Malta in 2022, 48% less compared to 2021.

Some 2,000 refugees and migrants arrived in Spain in December; a 51% increase compared to November. Of these, 25% arrived in the Canary Islands. Arrivals in Spain through the Northwest African maritime route decreased by 32% and increased through the Western Mediterranean route by 153% compared to November. Between January and December 2022, arrivals in Spain decreased by 26% compared to 2021.

Some 2,200 refugees and migrants arrived in Greece by land and sea in December, a 21% decrease compared to November, and a 150% increase compared to December 2021. Arrivals to Greece in 2022 (18,800) more than doubled compared to 2021 because of more people departing from Türkiye and Lebanon in 2022, who were rescued in Greek waters. Turkish authorities reported rescuing or intercepting some 4,000 refugees and migrants at sea in December, a 10% increase compared to November. In addition, some 240 refugees and migrants arrived by sea in Cyprus in December, a 7% decrease compared to November.

<sup>1</sup> For more information, please visit <https://data2.unhcr.org/en/situations/mediterranean>



## SOUTH EASTERN EUROPE<sup>9</sup>

Some 2,100 persons arrived in, or transited through, the subregion as part of mixed refugee and migrant movements in December 2022, 29% less than November and 49% more than in December 2021. In 2022, some 36,400 people arrived in or transited through the subregion, 23% more than in 2021. Of the overall arrivals in 2022, some 3,900 were Afghans, 33% less compared to last year (some 5,800).

In December 2022, 93 persons submitted an asylum application, same as previous month. Fifteen positive first-instance decisions were issued in December (one refugee status and 14 subsidiary protection status), while 28 applications were rejected and 76 were closed, as the applicants were no longer present in the country of application. As of the end of December, 431 asylum applications were still pending decision across the subregion.

In 2022, 122 positive first-instance decisions have been issued across the subregion (22 refugee status and 100 subsidiary protection status), 159 asylum applications have been rejected, and 1,235 asylum applications have been closed after the applicants absconded from the asylum procedure.

<sup>1</sup> For more information, please visit <http://data2.unhcr.org/en/situations/southeasterneurope>

<sup>1</sup> Dead and missing figures refer to the Mediterranean and Northwest African maritime routes. Information is compiled from a variety of sources, the quality and reliability of which can vary. While every effort has been made to ensure that all statistical information is verified, figures on some arrivals, as well as dead and missing at sea, represent an estimate. Triangulation of information and sources is performed on a continuous basis. Therefore, amendments in figures may occur, including retroactively.

<sup>2</sup> Includes sea arrivals in the Canary Islands (Spain) via the Atlantic Ocean.

<sup>3</sup> Includes sea and land arrivals in Spain via the Western Mediterranean route.

<sup>4</sup> Includes sea arrivals in Italy and Malta.

<sup>5</sup> Includes sea and land arrivals in Greece and sea arrivals in Cyprus.

<sup>6</sup> Majority of the persons arriving in the Western Balkan region are part of the secondary movement, those who have already arrived in Greece or Bulgaria and then transited through the region with the intention to move onward to other EU countries.

<sup>7</sup> [Ukraine Internal Displacement Report](https://data2.unhcr.org/en/situations/ukraine), IOM, 25 November - 5 December 2022.

<sup>8</sup> <https://data2.unhcr.org/en/situations/libya>

<sup>9</sup> Includes Albania, Bosnia and Herzegovina, Montenegro, North Macedonia, Serbia and Kosovo (S/RES/1244 [1999]).