



# Uganda Country Refugee Response Plan (UCRRP 2022-23) Performance Dashboard

Quarter 4  
2022

## Population

Refugees and asylum-seekers



Individuals: **89,987**

Households: **21,294**

Settlement

Rwamwanja

Target year

2022

## UCRRP Partners 20



GOV'T 02



UN Agencies 03



NNGOs 04



INGOs 13

Sector

Indicator

Actual

Target

## Education



% children enrolled in Primary



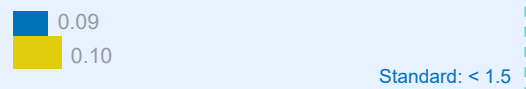
Teacher Pupil ratio (1:65)



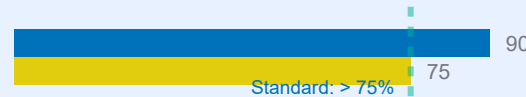
## Health & Nutrition



Under 5 mortality rate



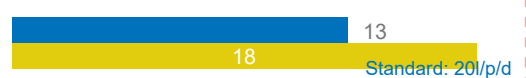
Severe acute malnutrition recovery rate



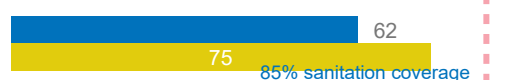
## WASH



# of litres per person per day



% household latrine coverage



## Energy & Environment



# of hectares woodlots/plantations maintained



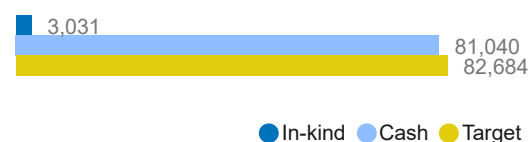
# of HH supported with clean and/or energy efficient technologies for cooking



## Food Security



# of refugees and asylum seekers receiving food assistance disaggregated by modality (Cash + In-kind)



Quantity of food provided (Metric Tonnes)

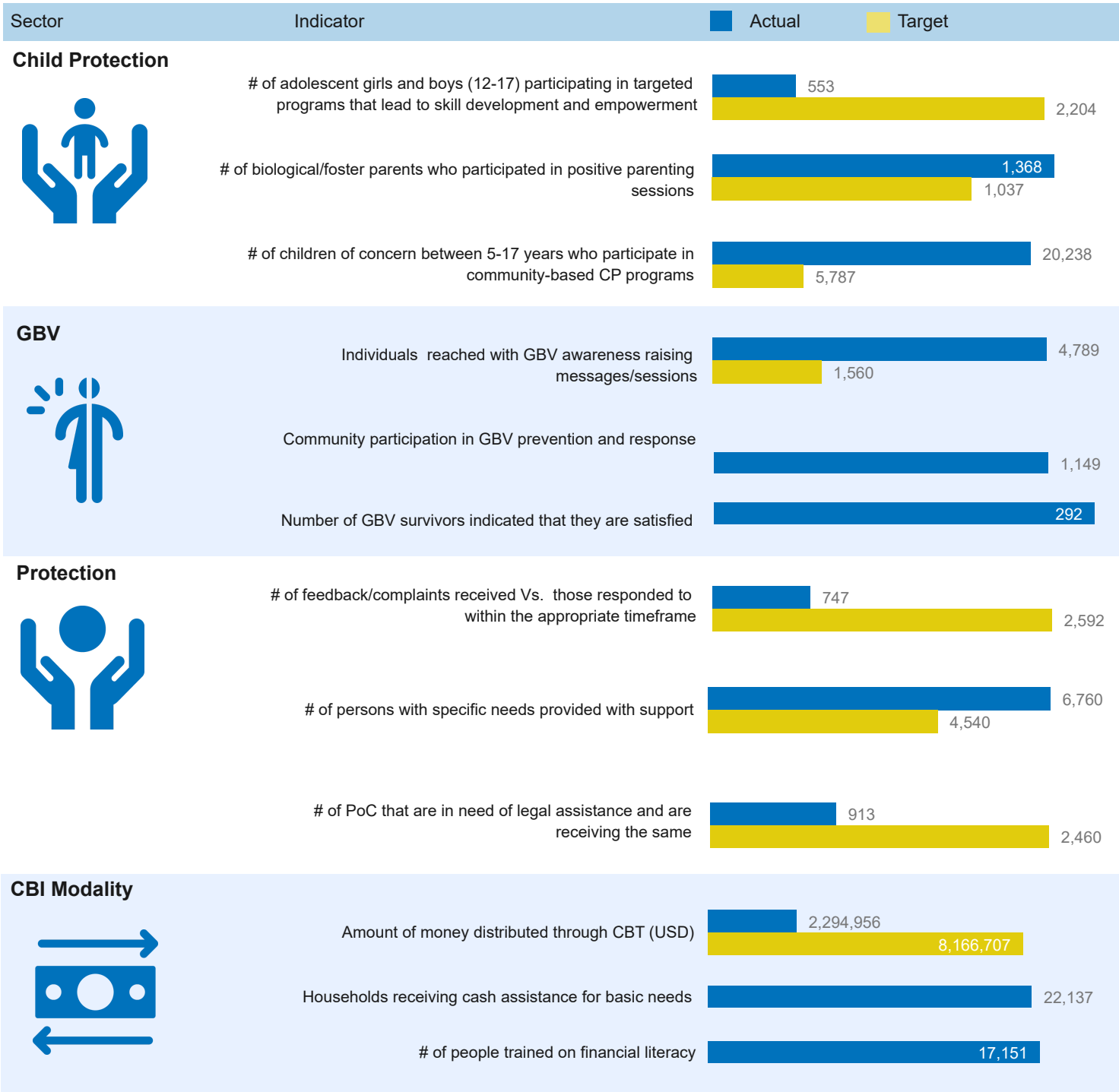


## Livelihoods & Resilience



% of PoCs with access to arable land





## List of Partners who reported as of Q4 2022, UN Agencies and Government

### National NGOs

AWYAD, Nsamizi, TPO and TTR

### International NGOs

AIRD, Alight, AVSI, COHERE, FCA, FRC, LWF, MTI, Oxfam, SCI, SOS, WCC and WVI

### UN Agencies

UNFPA, UNHCR, UNICEF and WFP

### Government

OPM, Kamwenge DLG