

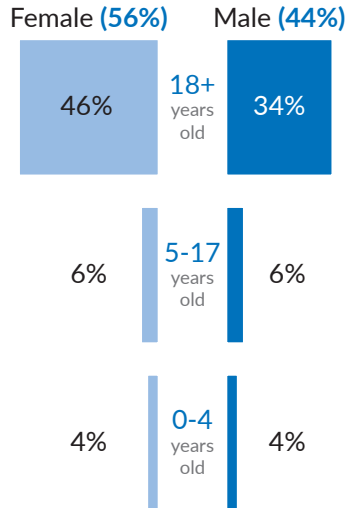


98,000

estimated newly arrived refugees in the Somali region

Population estimates provided by the authorities of Doolo zone, Somali Region.

Age/Sex Breakdown estimated based on pre-registration.

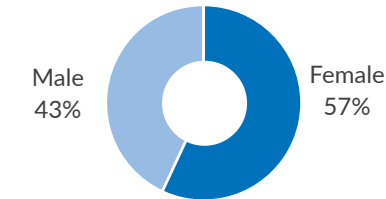


70,000*

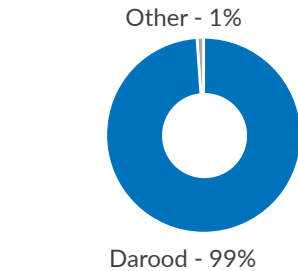
newly arrived refugees pre-registered in the Somali region

Pre-registration is ongoing by the government (RRS) and UNHCR. Pre-registration does not include biometric data collection.

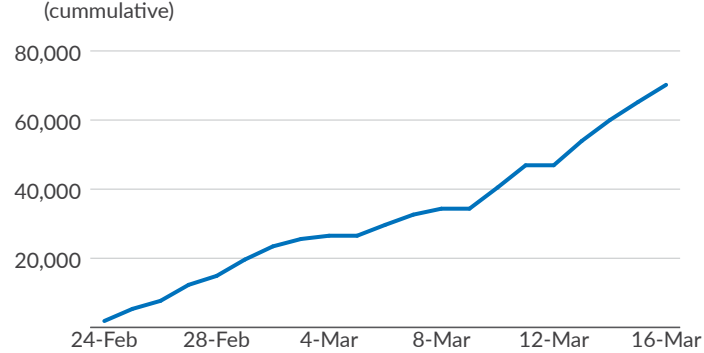
Gender of Head of Household (pre-registration)



Ethnicity / Clan (pre-registration)

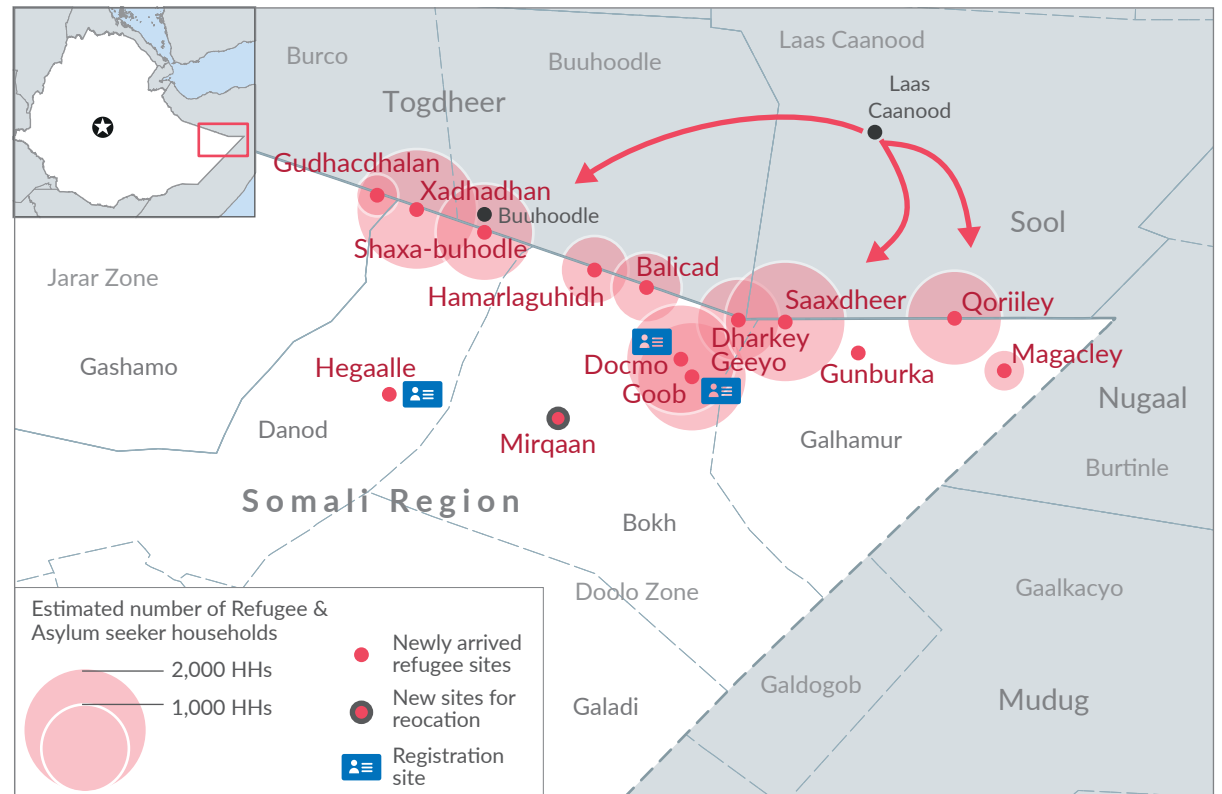


Number of people pre-registered (cummulative)



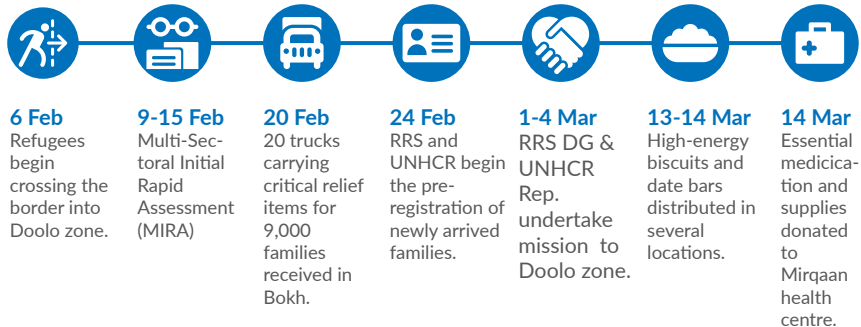
Government (RRS) and UNHCR emergency registration teams are pre-registraring new arrivals in three sites currently.

Docmo and Goob in Bokh woreda. Hegaalle in Danod woreda.



The boundaries and names shown and the designations used on this map do not imply official endorsement or acceptance by the United Nations.

Timeline of key events

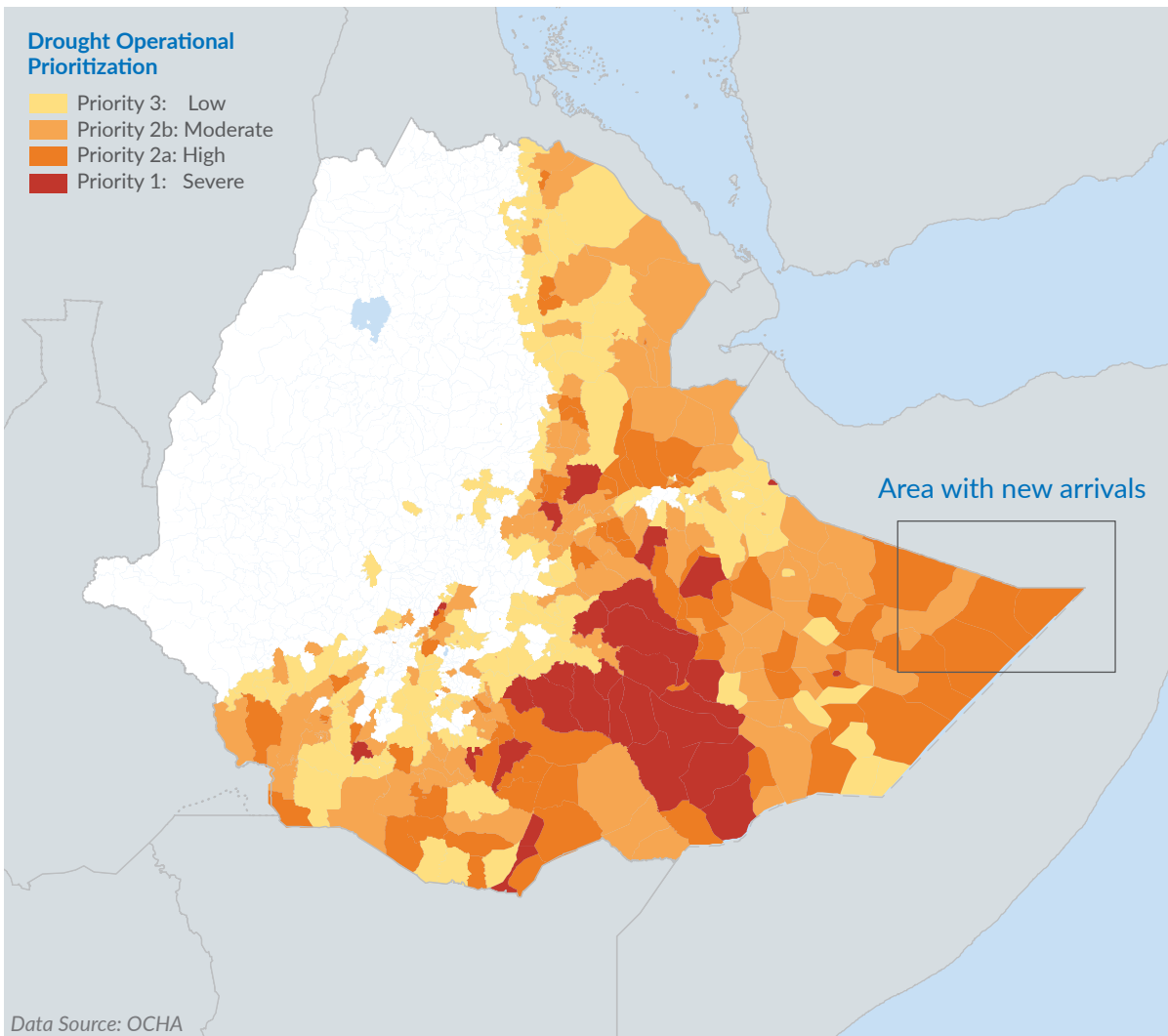
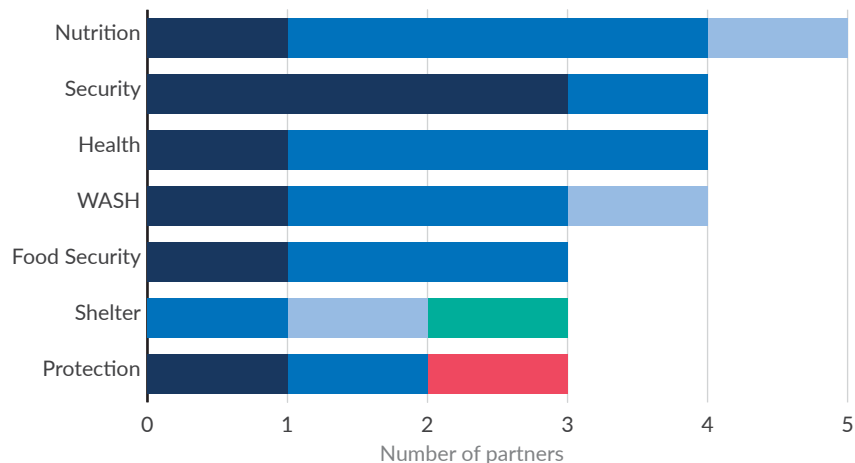


Drought

The area where refugees are settling is mostly identified as being **highly affected** by drought.

Implementing partners

15 organizations responding in Doolo Zone



The response plan for this refugee influx aims to **relocate refugees** to organized sites, away from the border and closer to host communities. The humanitarian community will work on improving **access to basic services** for both refugee and host communities.

Challenges / Needs

Humanitarian Response

Partners



Protection

There is no protection partner to support activities relating to child protection, gender-based violence (GBV), persons with disabilities, elderly, etc.

Over 70,000 individuals have been pre-registered since level 1 registration started on 24th February 2023. Among them, 2,140 children were identified as being unaccompanied and referred to protection desk for further assessment.

RRS (for pre-registration), UNHCR, ICRC



Shelter

Refugees are living in overcrowded makeshift shelters with no privacy and are not protected from weather elements. Women and girls raised concerns about poor shelters in which they are living.

A joint team conducted a site assessment at Mirqaan site where 460 hectares are available for 100,000 refugees. The relocation of 10,000 refugees is planned for the coming 2-3 weeks. The demarcation for Mirqaan site is underway. WFP will establish a warehouse/distribution site. For registration and reception sites, the site was demarcated and preparation to set up shelters and facilities is in progress.

UNHCR, NRC, SEE



Food Security

Food insecurity is one of the most pressing needs of newly arrival refugees. Refugees continue to be interspersed along vast areas of the border, and non-emergency food assistance is due to start.

Distribution of high energy biscuits and date bars continued. To date, nearly 35,000 individuals have received high energy biscuits and date bars. WFP has pre-positioned 1,400 metric tons of food supplies in Bokh awaiting distribution.

RRS, WFP, UNHCR



Health

Health facilities are poorly staffed and equipped, with some missing essential equipment including beds. Water and sanitation at the health facilities need to be installed, and distances between primary and referral facilities are vast. Refugees do not have access to services for clinical management of rape and access to anti-retroviral therapy is through referral to a hospital more 12 hours away by road.

Refugees receive basic primary healthcare at the nearest government health facilities. This includes management of common diseases, vaccination services, sexual and reproductive healthcare, laboratory services and access to essential medicines. UN agencies donated 59 cartons of essential medicines and medical supplies to Mirqaan Health Center and 44 cartons to Hegalle Health Center, including anti-malarials and rapid diagnostic test kits for malaria.

Regional Health Bureau, UNICEF, WHO, UNHCR



WASH

There is no WASH partner yet on the ground to develop the WASH components of the new site. Thus far over 22,000 refugees received HEB and date bars.

Two water trucking sources have been identified. UNICEF is supporting with water trucking in Danot woreda, serving refugees and host communities. MSF has put 6 emergency latrines in Goob to serve refugees at temporary transit site.

Regional Water Bureau, UNHCR, MSF, UNICEF



Coordination & Operations

There are few partners in key sectors such as protection, Shelter, and WASH. Long distances from/to Bokh, limited connectivity and lack of offices are hampering coordination and implementation of activities. There is scarcity of electricity and network connectivity.

The weekly inter-agency coordination meetings are taking place in Bokh and Jijiga. Joint visits made by RRS, UNHCR and WFP were conducted to identify an appropriate land for offices and guest house.