

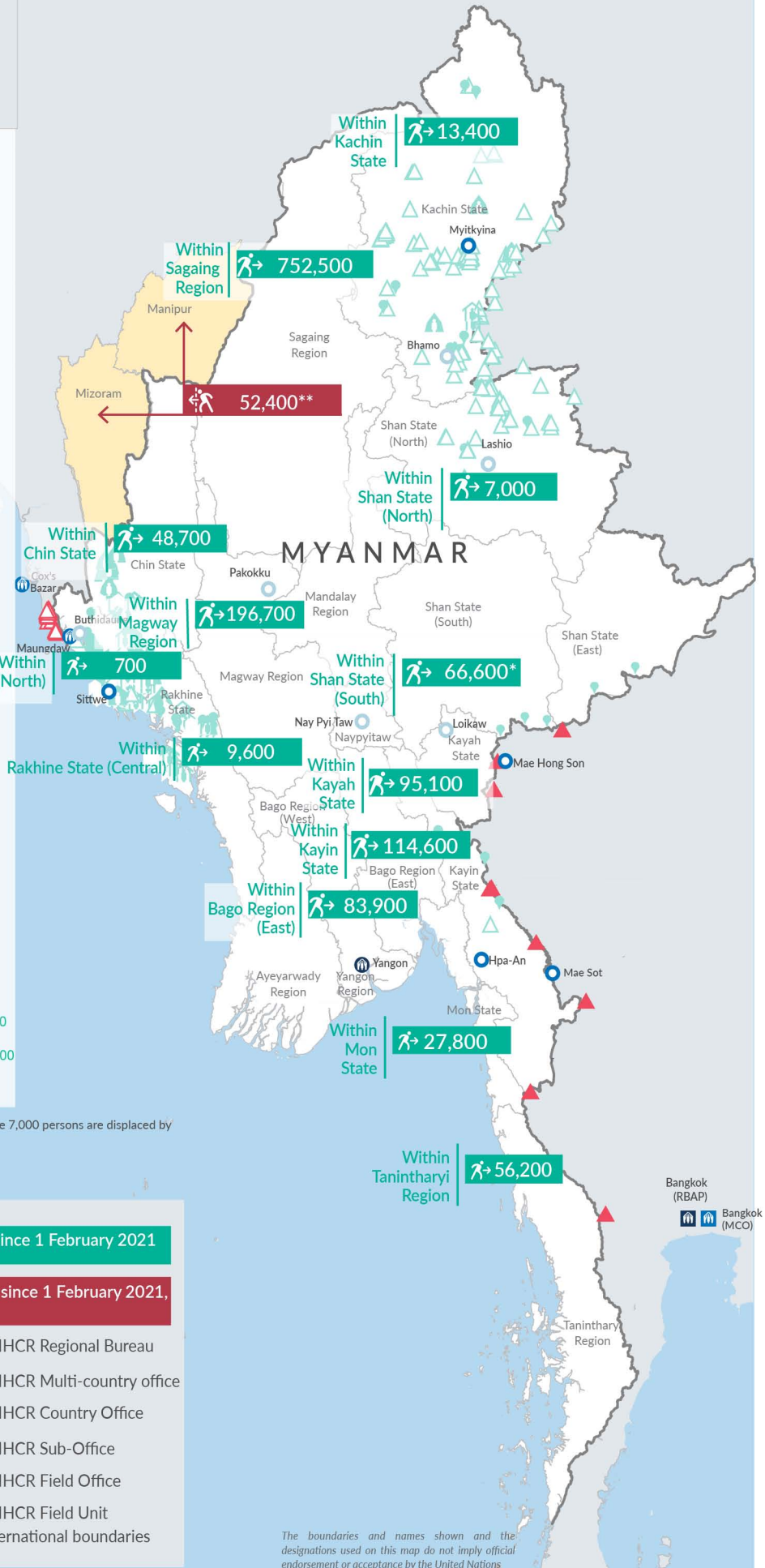
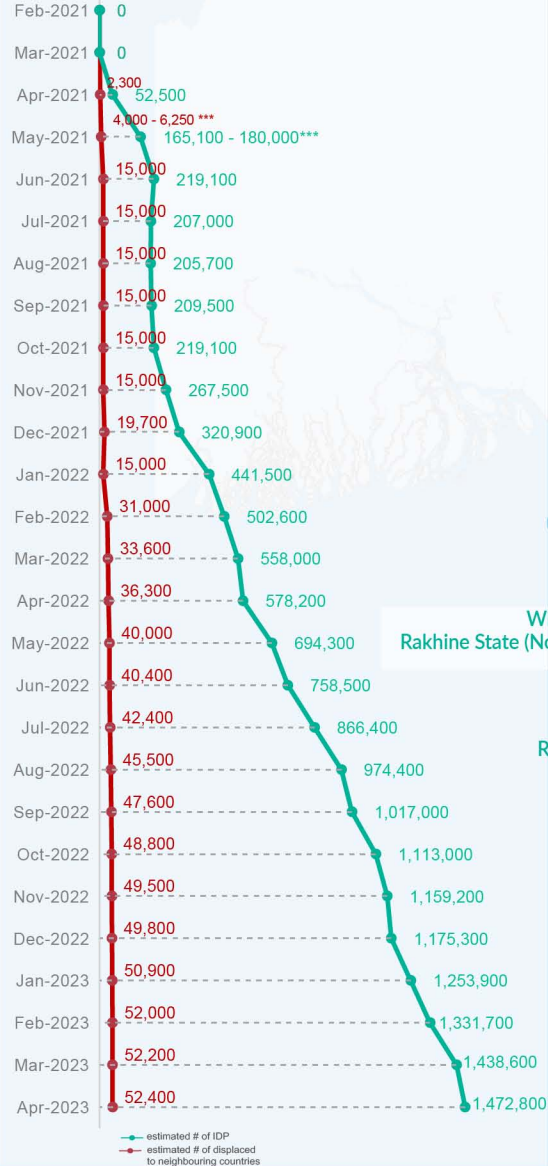
**Key figures**

Estimated # of IDPs → 1,472,800

Estimated # of displaced to neighbouring countries → 52,400

Source : UN in Myanmar

**Estimated displacement figures by Month**



\*59,600 persons are displaced by armed conflict in neighbouring Kayah State while 7,000 persons are displaced by inter-EAO conflict between SSPP and RCSS

\*\*UN Estimates

\*\*\*Range of figures was used while data collection was in progress

Estimated internal displacement within Myanmar since 1 February 2021 (rounded to the nearest hundred)

Estimated displacement to neighbouring countries since 1 February 2021, who remain displaced (rounded to the nearest hundred)

- IDP unplanned settlement (pre-1 Feb 2021)
- IDP Center (pre-1 Feb 2021)
- IDP spontaneous location (pre-1 Feb 2021)
- IDP planned settlement (pre-1 Feb 2021)
- Temporary shelter for displaced people from Myanmar
- Refugee, planned settlement
- States/Provinces with new arrivals
- UNHCR Regional Bureau
- UNHCR Multi-country office
- UNHCR Country Office
- UNHCR Sub-Office
- UNHCR Field Office
- UNHCR Field Unit
- International boundaries

The boundaries and names shown and the designations used on this map do not imply official endorsement or acceptance by the United Nations

## Key figures


**1,800,800**

Estimated total IDPs within Myanmar

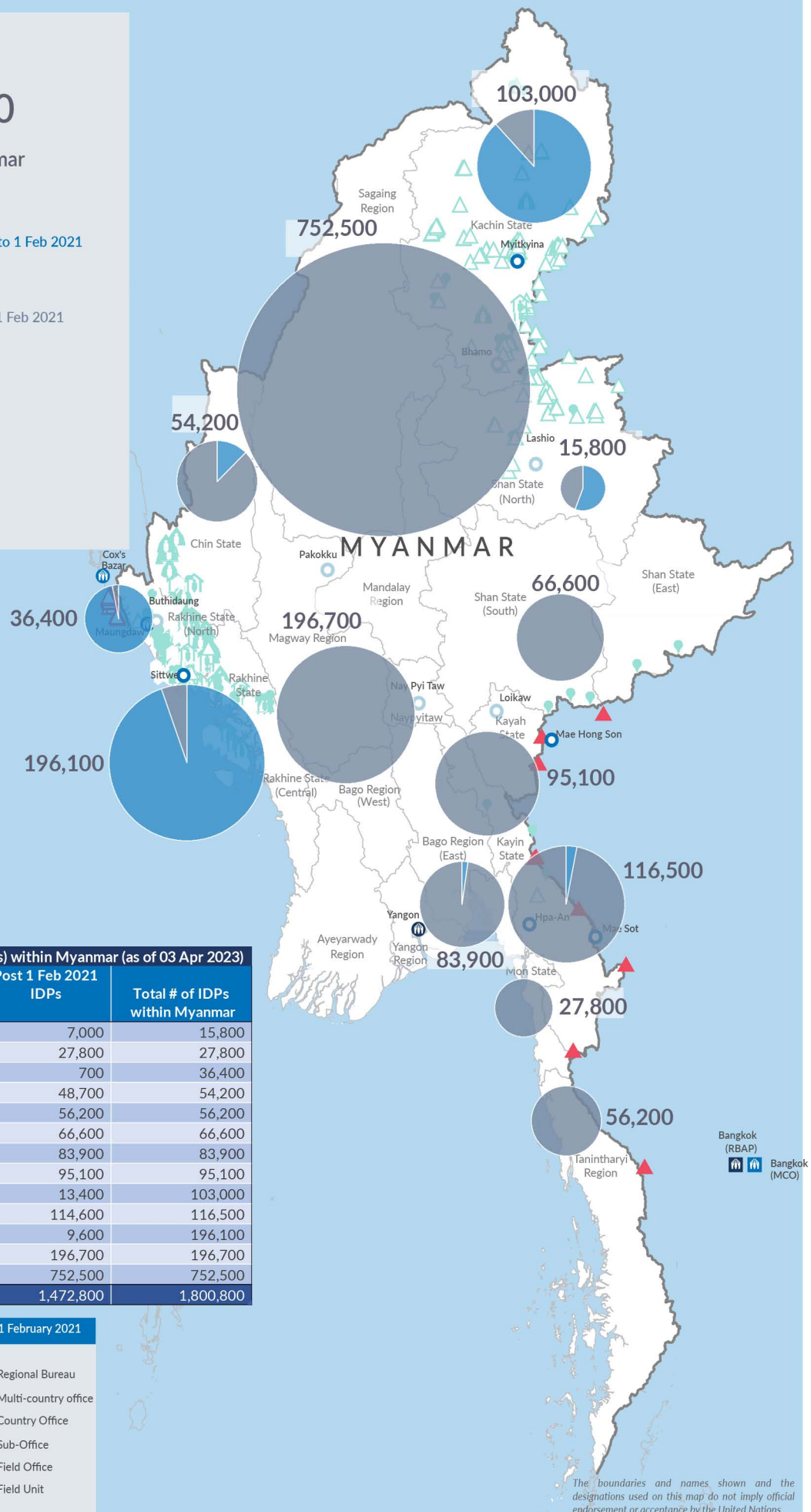

**328,000**  
 Estimated # of IDPs displaced prior to 1 Feb 2021  
 (As of 31 Dec, 2022)


**1,472,800**  
 Estimated # of IDPs displaced post 1 Feb 2021  
 (As of 03 Apr, 2023)


 Prior to 1 Feb 2021


 Post 1 Feb 2021

Source : UN in Myanmar


**Estimated total internally displaced person (IDPs) within Myanmar (as of 03 Apr 2023)**

| State/Region            | Prior to 1 Feb 2021 IDPs | Post 1 Feb 2021 IDPs | Total # of IDPs within Myanmar |
|-------------------------|--------------------------|----------------------|--------------------------------|
| Shan State (North)      | 8,800                    | 7,000                | 15,800                         |
| Mon State               | -                        | 27,800               | 27,800                         |
| Rakhine State (North)   | 35,700                   | 700                  | 36,400                         |
| Chin State              | 5,500                    | 48,700               | 54,200                         |
| Tanintharyi Region      | -                        | 56,200               | 56,200                         |
| Shan State (South)      | -                        | 66,600               | 66,600                         |
| Bago Region (East)      | -                        | 83,900               | 83,900                         |
| Kayah State             | -                        | 95,100               | 95,100                         |
| Kachin State            | 89,600                   | 13,400               | 103,000                        |
| Kayin State             | 1,900                    | 114,600              | 116,500                        |
| Rakhine State (Central) | 186,500                  | 9,600                | 196,100                        |
| Magway Region           | -                        | 196,700              | 196,700                        |
| Sagaing Region          | -                        | 752,500              | 752,500                        |
| Grand Total             | 328,000                  | 1,472,800            | 1,800,800                      |

**Estimated internal displacement within Myanmar Pre+Post 1 February 2021 (rounded to the nearest hundred)**

-  IDP unplanned settlement (pre-1 Feb 2021)
-  IDP Center (pre-1 Feb 2021)
-  IDP spontaneous location (pre-1 Feb 2021)
-  IDP planned settlement (pre-1 Feb 2021)
-  Temporary shelter for displaced people from Myanmar
-  Refugee, planned settlement
-  International boundaries
-  UNHCR Regional Bureau
-  UNHCR Multi-country office
-  UNHCR Country Office
-  UNHCR Sub-Office
-  UNHCR Field Office
-  UNHCR Field Unit

The boundaries and names shown and the designations used on this map do not imply official endorsement or acceptance by the United Nations