

# Overview of Refugee and Asylum-Seekers Population

(as of 31 March 2023)

**1.37** MILLION approx

TOTAL REGISTERED PERSONS OF CONCERN



**68.7%**  
OUTSIDE REFUGEE VILLAGES

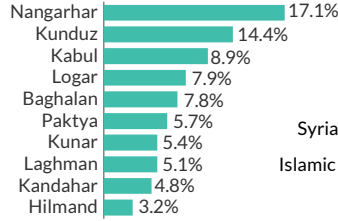


**31.3%**  
LIVING IN REFUGEE VILLAGES

**1.32** MILLION approx

AFGHAN (PoR) CARD HOLDERS

% PLACE OF ORIGIN (Top 6)

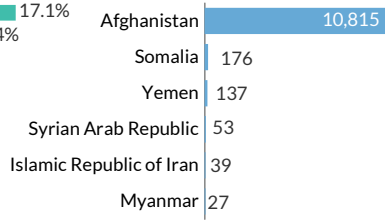


19.6% From other regions

**11,340**

REGISTERED REFUGEES UNDER UNHCR'S MANDATE

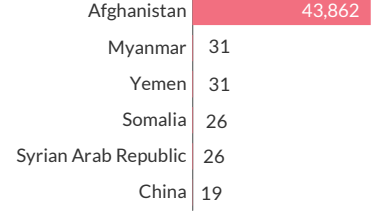
COUNTRY OF ORIGIN (Top 6)



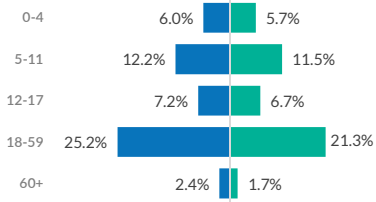
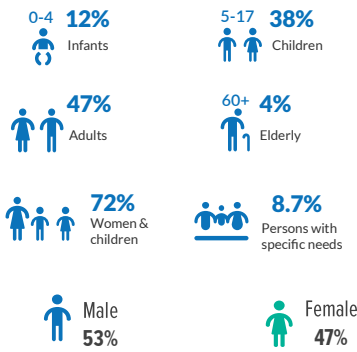
**44,047**

REGISTERED ASYLUM SEEKERS UNDER UNHCR'S MANDATE

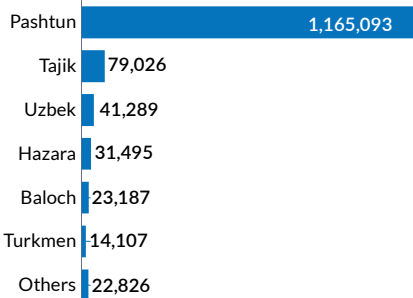
COUNTRY OF ORIGIN (Top 6)



## AGE AND GENDER COMPOSITION

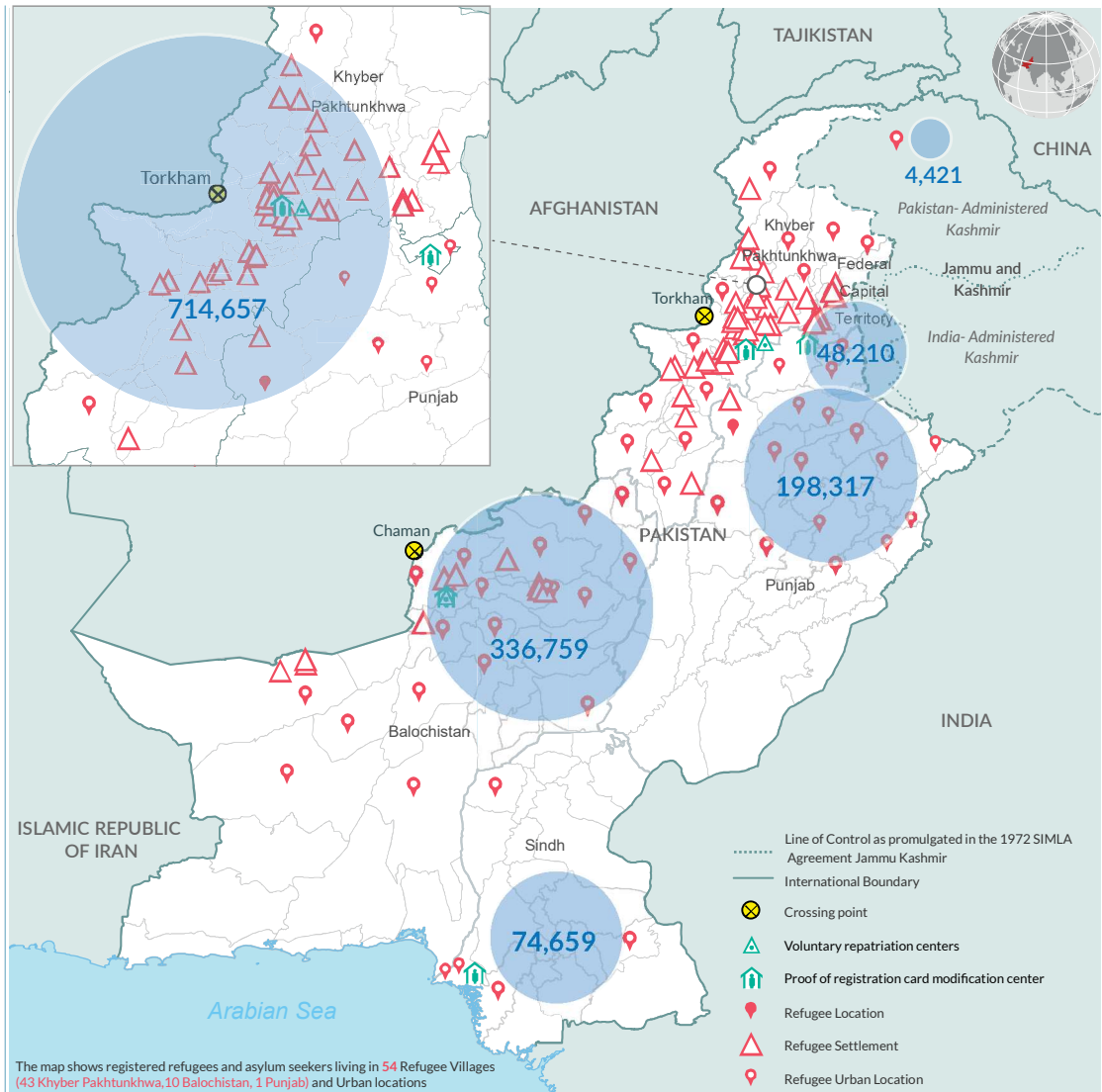


## BREAKDOWN BY ETHNICITY

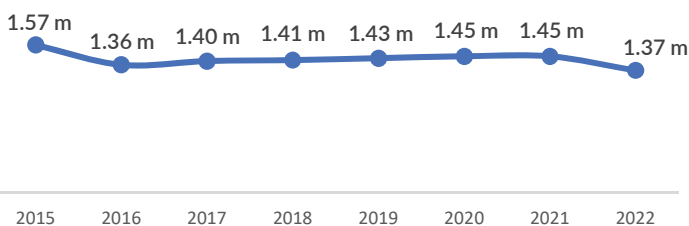


**345,116** Households

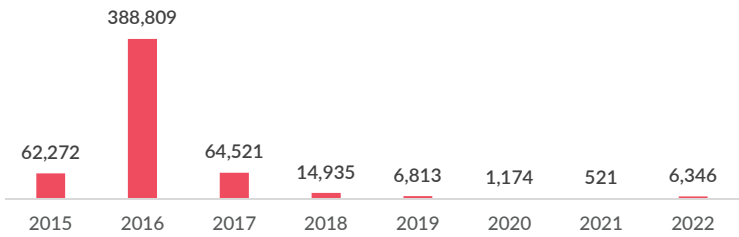
**77,413** (22.4%) Female-Headed



## TRENDS POPULATION TREND SINCE 2015



## POPULATION DECREASE TREND SINCE 2015\*



The Population Statistics are compiled quarterly using data from Afghan National Registration (ANR) Database and UNHCR Profile Global Registration System (Progres V4). Statistics are updated as of 31 March 2023.

\* Decreases result from voluntary repatriation, resettlement and inactivation, including due to deaths

Disclaimer: The boundaries and names shown and the designations used on the map do not imply official endorsement or acceptance by the United Nations. Dotted line represents approximately the Line of Control in Jammu and Kashmir agreed upon by India and Pakistan. The final status of Jammu and Kashmir has not yet been agreed upon by the parties. Creation date: 12 April 2023 Data Sources: Afghan National Registration (ANR) Database, UNHCR.

More information available on UNHCR: data portal, <https://data2.unhcr.org/en/country/pak>, Feedback: Information Management Unit at [pakisim@unhcr.org](mailto:pakisim@unhcr.org)