

Voluntary repatriation of Afghan refugees

(1 January to 31 March 2023)

4.38 MILLION approx

Number of Afghan refugees assisted through voluntary repatriation programme since 2002

783,617

Number of households assisted through voluntary repatriation programme since 2002

70% Azakhel **30%** Baleli

*% of Refugee returnees through voluntary repatriation centres (VRCs) since 2002

1,255

RETURNEES TO AFGHANISTAN FROM 1 JAN - 31 MAR 2023

293 Households

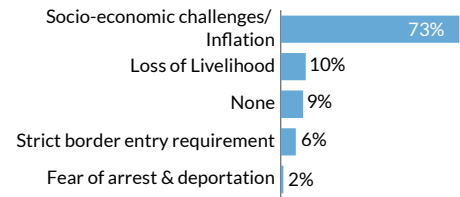
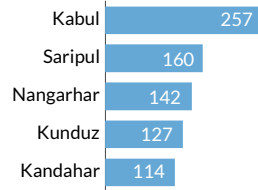
USD \$470,250

Cash grants provided by UNHCR (Through Encashment Centre) from 1 Jan - 31 Mar, 2023

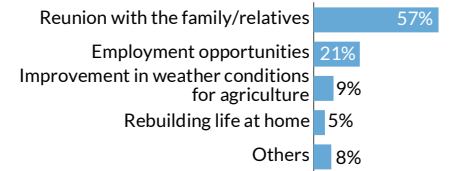
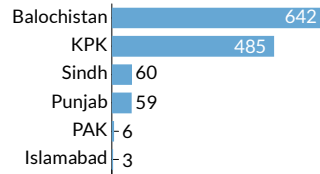
44% Azakhel **56%** Baleli

*% Refugee returnees through voluntary repatriation centres (VRCs) from Jan - Mar, 2023

Place of intended return (Top 5) **Reasons for leaving Pakistan(Push Factors)

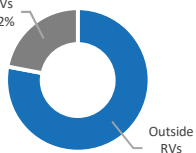


Place of Residence in Pakistan **Reasons for return to Afghanistan (Pull Factors)



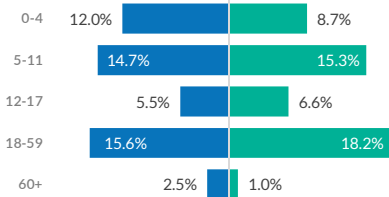
ASSISTED REPATRIATION IN 2022

RVs Vs. OUTSIDE RVs

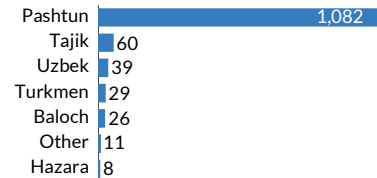


AGE AND GENDER COMPOSITION

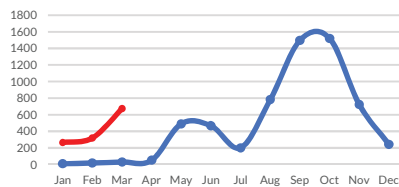
Male **50.3%** Female **49.7%**



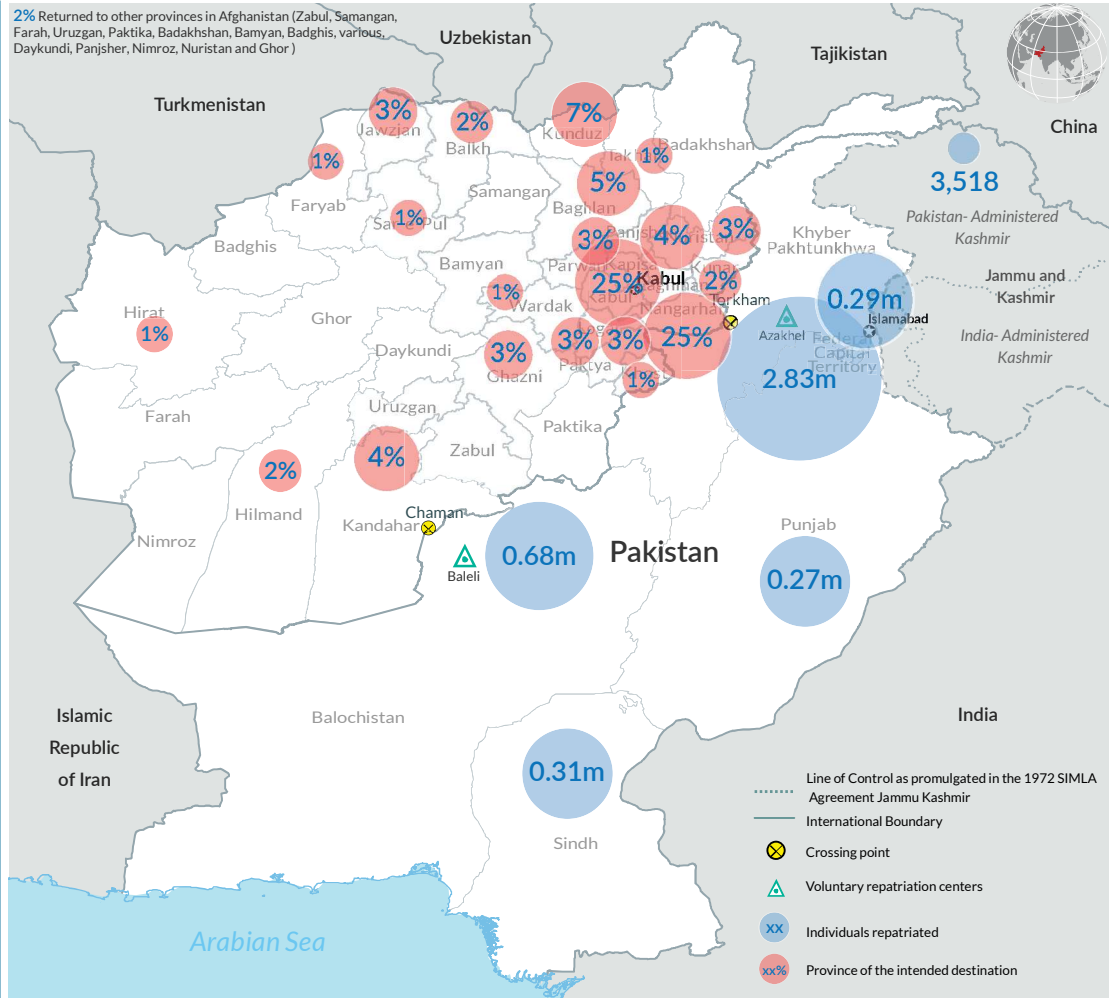
BREAKDOWN BY ETHNICITY



MONTHLY VOLUNTARY REPATRIATION TRENDS (2022-2023)

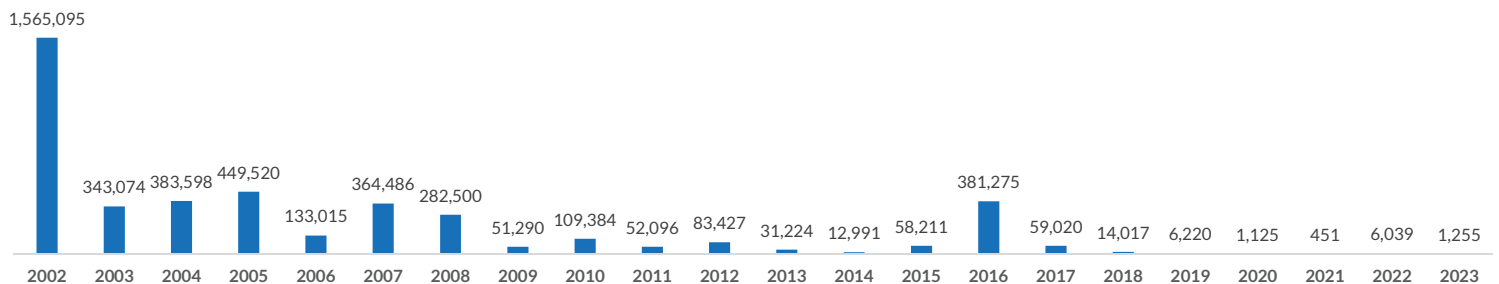


2% Returned to other provinces in Afghanistan (Zabul, Samangan, Farah, Uruzgan, Paktika, Badakhshan, Bamyan, Badghis, various, Daykundi, Panjsher, Nimroz, Nuristan and Ghor)



The figures in this map reflect returns assisted through voluntary repatriation centers (VRCs) in Pakistan and the intended place of return in Afghanistan since 2002.

YEARLY VOLUNTARY REPATRIATION TRENDS (2002-2023)



*The Baleli Verification Center serves all returnees from Baluchistan, as well as refugees departing Karachi and returning to Afghanistan via Baluchistan. The Azakhel Center in Khyber Pakhtunkhwa serves refugees returning from Khyber Pakhtunkhwa, Islamabad, Punjab, Sindh, and Pakistan Administered Kashmir. **Exit interviews have been conducted with refugees in the voluntary repatriation centers (VRCs).

Disclaimer: The boundaries and names shown and the designations used on the map do not imply official endorsement or acceptance by the United Nations. Dotted line represents approximately the Line of Control in Jammu and Kashmir by India and Pakistan. The final status of Jammu and Kashmir has not yet been agreed upon by the parties. Creation date: 12 April 2023 Data Sources: Afghan National Registration Database (ANR) - 2022& Exit Questionnaire Database. More information available on UNHCR: data portal, <https://data2.unhcr.org/en/country/pak>, Feedback: Information Management Unit at pakim@unhcr.org