

Key figures

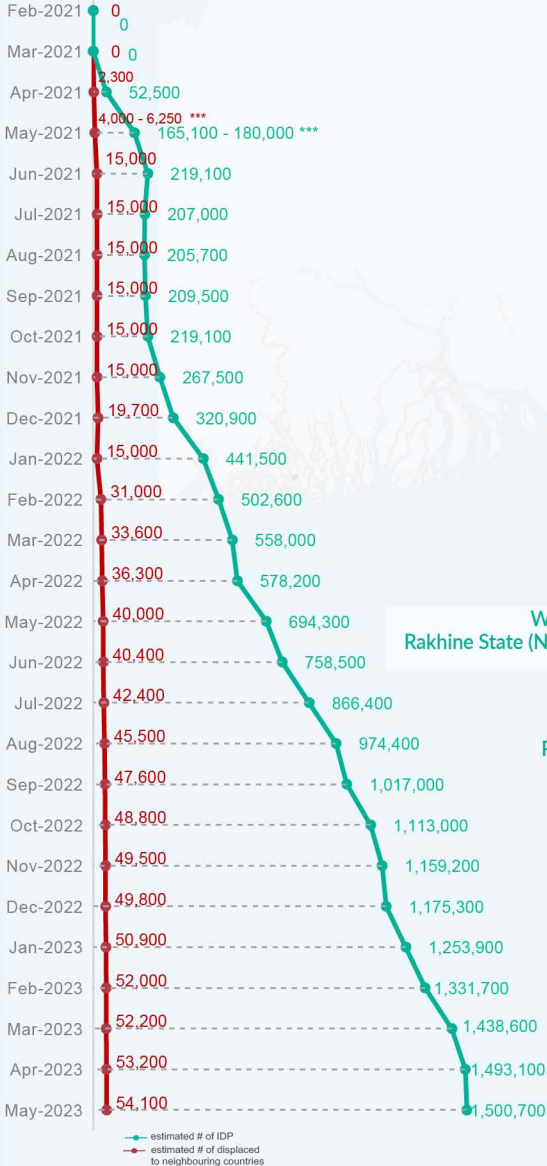
Estimated # of IDPs

 1,500,700

Estimated # of displaced to neighbouring countries

 54,100

Source : UN in Myanmar


Estimated displacement figures by Month



*60,100 persons are displaced by armed conflict in neighbouring Kayah State while 6,900 persons are displaced by inter-EAO conflict between SSPP and RCSS.

**UN Estimates

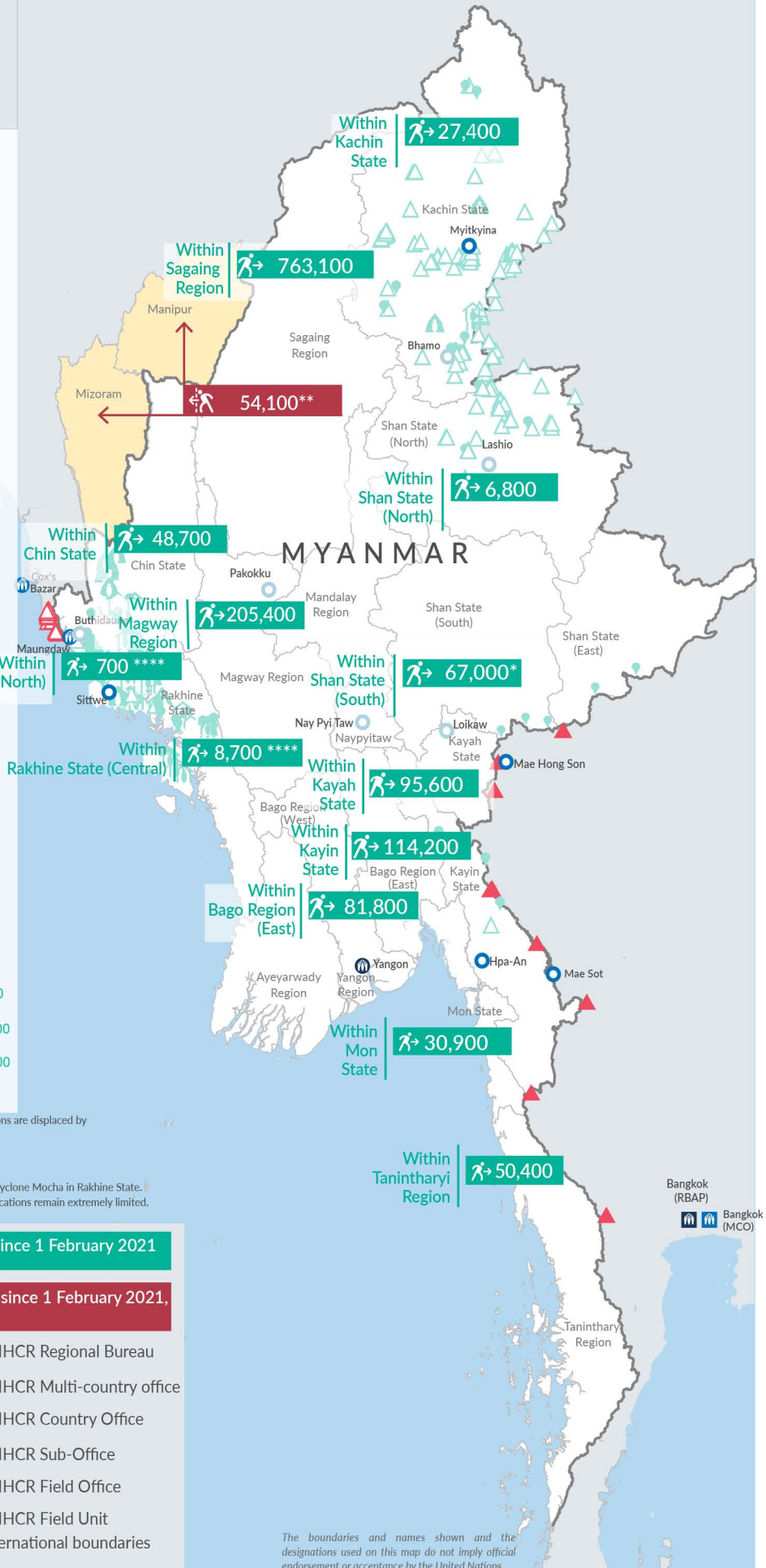
*** Range of figures was used while data collection was in progress.

**** Regular data collection for the reporting period is disrupted by the immediate impacts of Cyclone Mocha in Rakhine State. Partners are assessing the displacement situation following the cyclone, however telecommunications remain extremely limited. Figures will be updated once regular data collection activities resume.

 **Estimated internal displacement within Myanmar since 1 February 2021**
 (rounded to the nearest hundred)

 **Estimated displacement to neighbouring countries since 1 February 2021, who remain displaced**
 (rounded to the nearest hundred)

- | | |
|----------------------------------------------------------------------------------------------------------------------------------------|----------------------------------------------------------------------------------------------------------------|
|  IDP unplanned settlement (pre-1 Feb 2021) |  UNHCR Regional Bureau |
|  IDP Center (pre-1 Feb 2021) |  UNHCR Multi-country office |
|  IDP spontaneous location (pre-1 Feb 2021) |  UNHCR Country Office |
|  IDP planned settlement (pre-1 Feb 2021) |  UNHCR Sub-Office |
|  Temporary shelter for displaced people from Myanmar |  UNHCR Field Office |
|  Refugee, planned settlement |  UNHCR Field Unit |
|  States/Provinces with new arrivals |  International boundaries |



The boundaries and names shown and the designations used on this map do not imply official endorsement or acceptance by the United Nations

Key figures

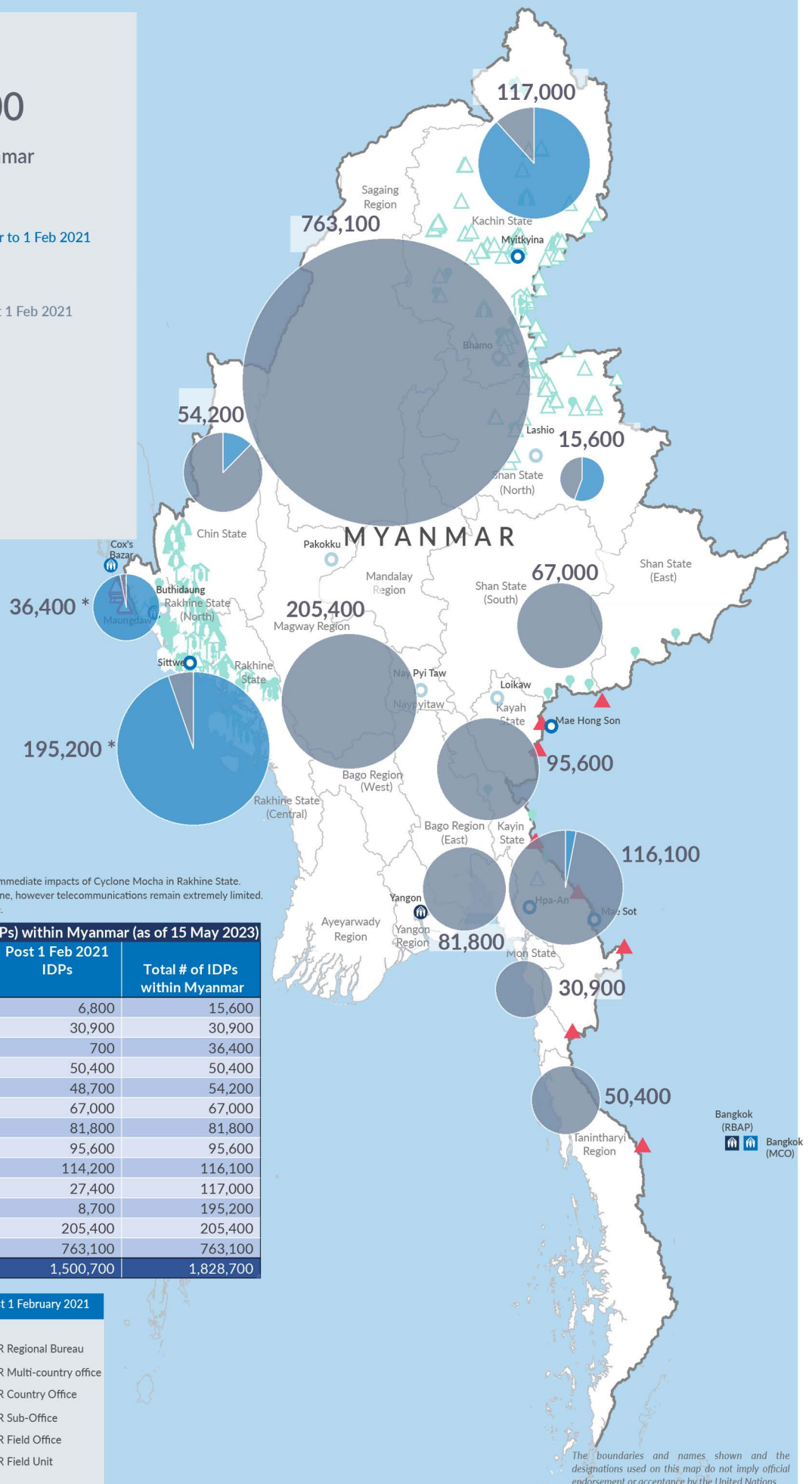

1,828,700

Estimated total IDPs within Myanmar


328,000
 Estimated # of IDPs displaced prior to 1 Feb 2021
 (As of 31 Dec, 2022)


1,500,700
 Estimated # of IDPs displaced post 1 Feb 2021
 (As of 15 May, 2023)


Source : UN in Myanmar



*Regular data collection for the reporting period is disrupted by the immediate impacts of Cyclone Mocha in Rakhine State. Partners are assessing the displacement situation following the cyclone, however telecommunications remain extremely limited. Figures will be updated once regular data collection activities resume.

Estimated total internally displaced person (IDPs) within Myanmar (as of 15 May 2023)

State/Region	Prior to 1 Feb 2021 IDPs	Post 1 Feb 2021 IDPs	Total # of IDPs within Myanmar
Shan State (North)	8,800	6,800	15,600
Mon State	-	30,900	30,900
Rakhine State (North)*	35,700	700	36,400
Tanintharyi Region	-	50,400	50,400
Chin State	5,500	48,700	54,200
Shan State (South)	-	67,000	67,000
Bago Region (East)	-	81,800	81,800
Kayah State	-	95,600	95,600
Kayin State	1,900	114,200	116,100
Kachin State	89,600	27,400	117,000
Rakhine State (Central)*	186,500	8,700	195,200
Magway Region	-	205,400	205,400
Sagaing Region	-	763,100	763,100
Grand Total	328,000	1,500,700	1,828,700

Estimated internal displacement within Myanmar Pre+Post 1 February 2021 (rounded to the nearest hundred)



The boundaries and names shown on this map do not imply official endorsement or acceptance by the United Nations