

90,000

Estimated arrivals

27

Potential entry points

61,195

Fixed new arrivals

20,189

Pre-registered

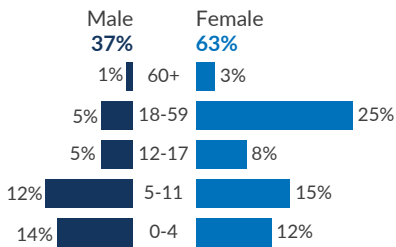
66%

pre-registered are children

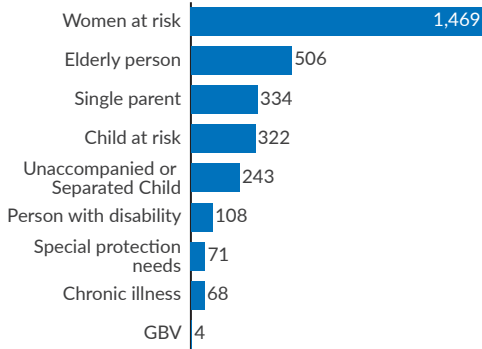
15%

pre-registered have specific needs

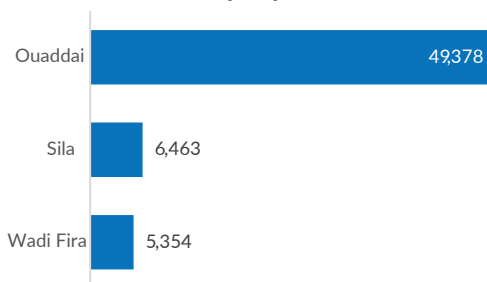
Age and gender breakdown of pre-registered



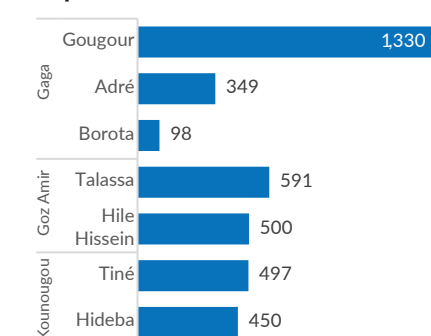
Pre-registered people with specific needs



Fixed new arrivals per provinces



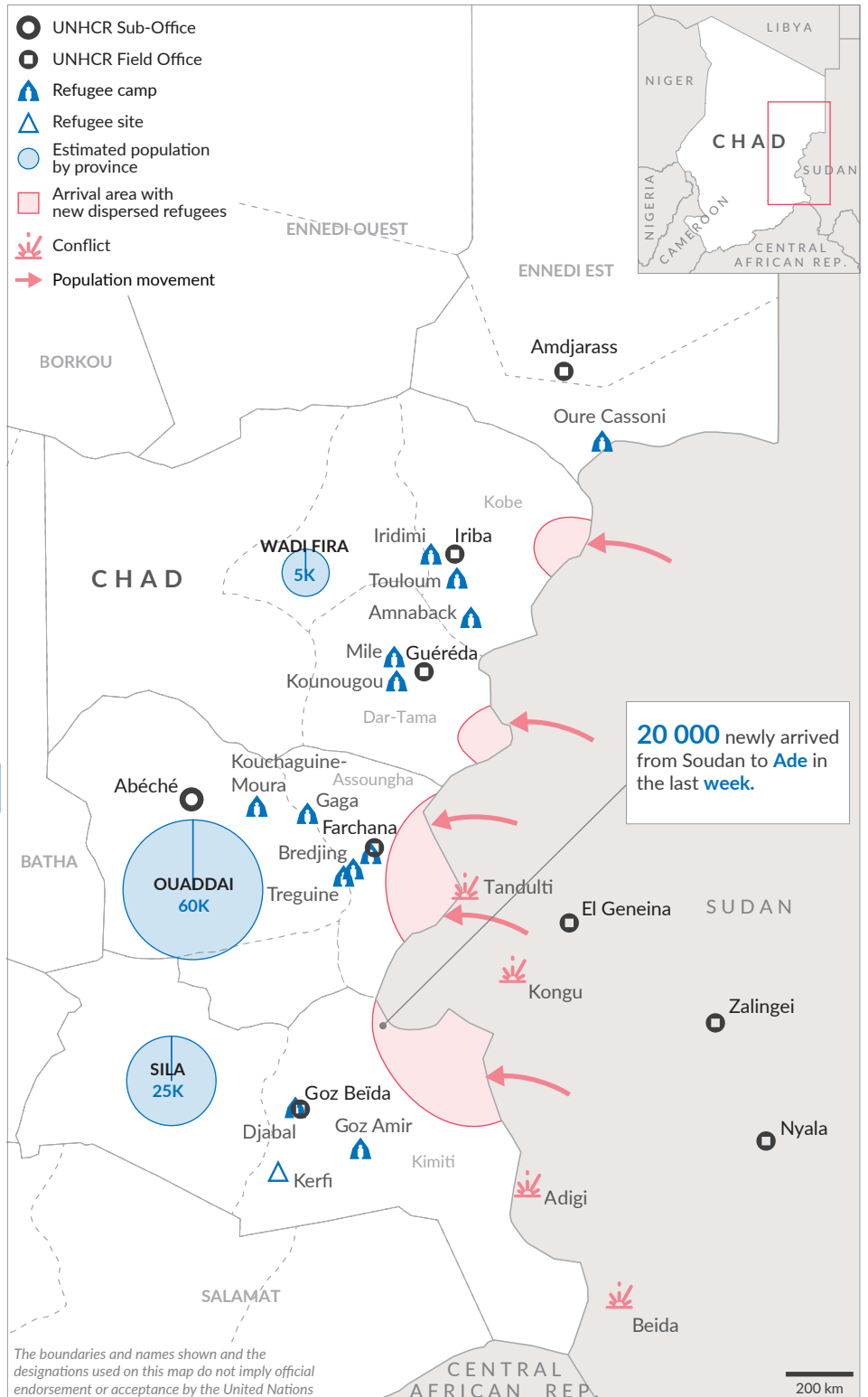
Persons relocated per villages to the camps



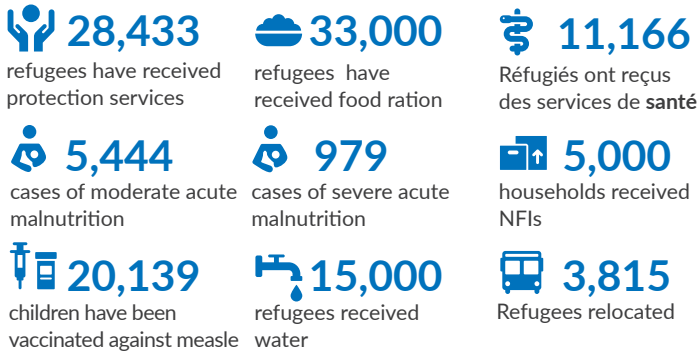
Context

Since the beginning of the conflict in Sudan on 15 April 2023, UNHCR has registered an **influx of Sudanese refugees and Chadian returnees from Darfur** at border entry points in eastern Chad.

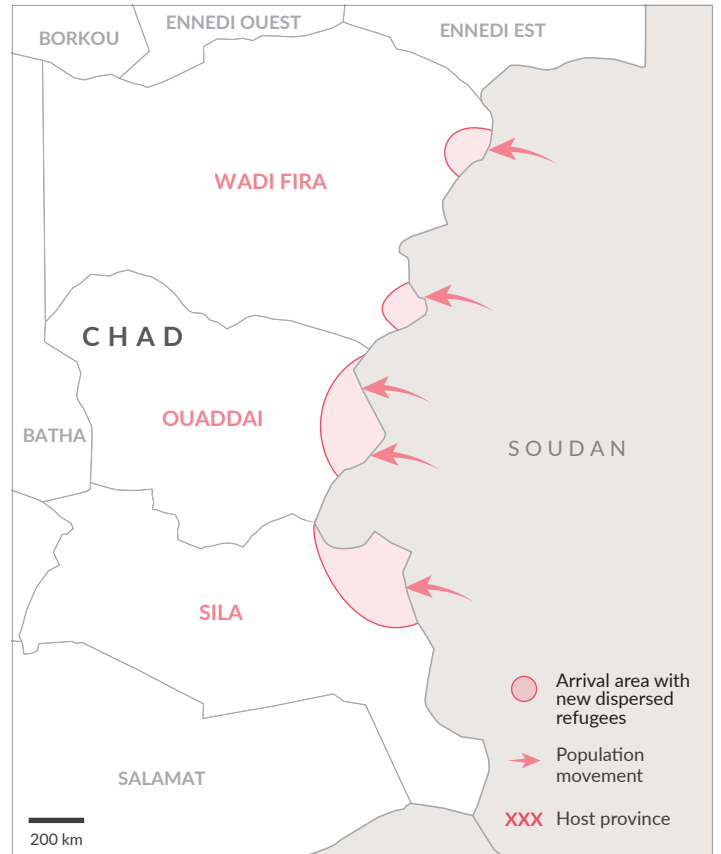
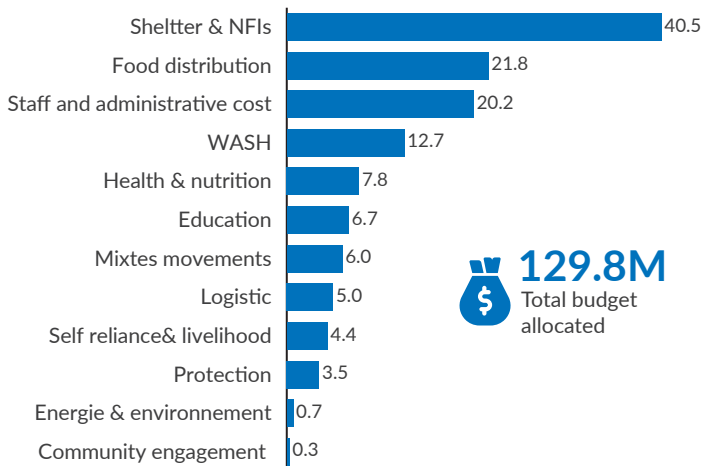
UNHCR field teams in Ouaddai, Sila and Wadi Fira provinces are working with the Chadian government, CNARR, local authorities, and partners to continue **monitoring the situation at the border, and to receive, protect and respond to the urgent humanitarian needs** of refugees and returnees fleeing the violence.



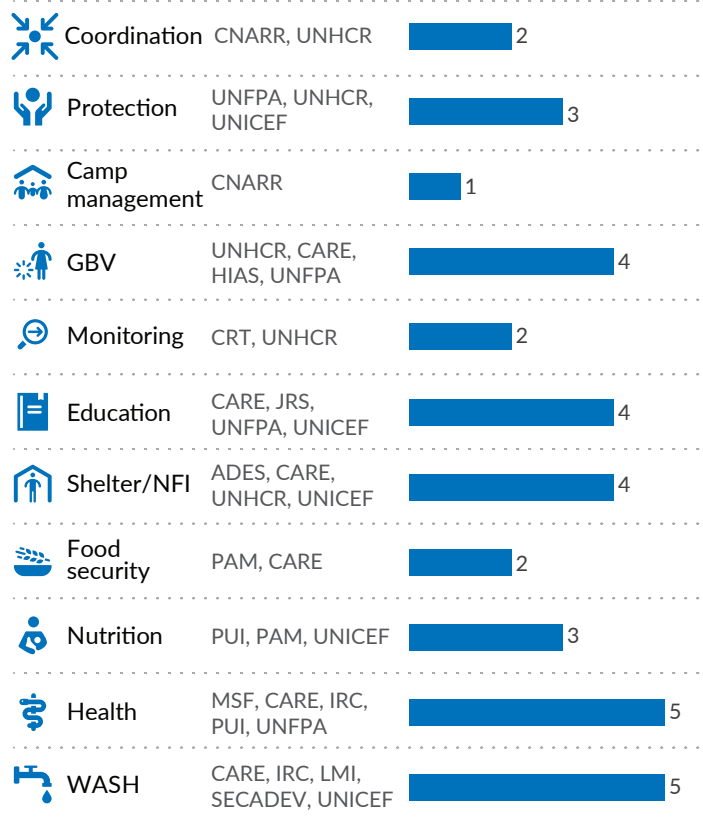
Sources: UNHCR, CNARR, OSM



RRP budget per sector | in million USD



Partner presence per sector



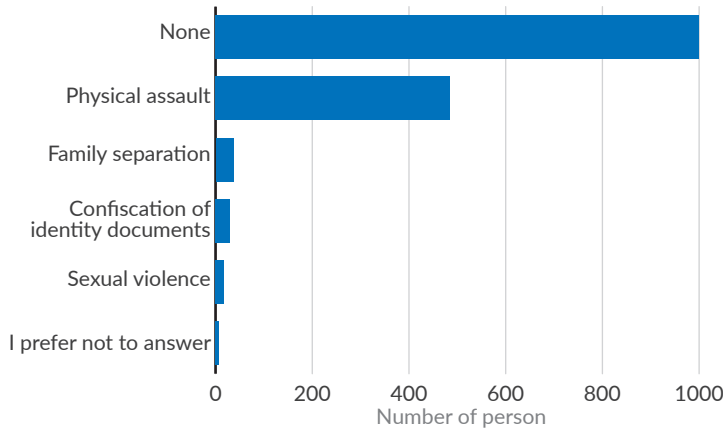
Acronym of partner

ADES	Economic and Social Development Agency
CARE	CARE International
CNARR	National Commission for the Reception and Reintegration of Refugees and Returnees
CRT	Chad Red Cross
HIAS	Hebrew Immigrant Aid Society
IRC	International Rescue Committee
JRS	Jesuit Refugee Service
LMI	Läkarmissionen International
PAM	United Nations World Food Programme
PUI	Première Urgence Internationale
SECADEV	Secours Catholique et Développement
UNFPA	United Nations Population Fund
UNHCR	United Nations High Commissioner for Refugees
UNICEF	United Nations Children's Fund

Sources: UNHCR, CNARR, OSM

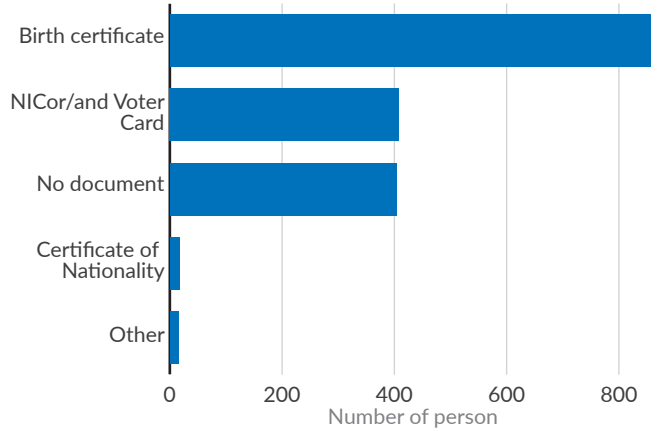
ACCESS TO TERRITORY AND ASYLUM

What types of identified dangers/threats are you exposed to?



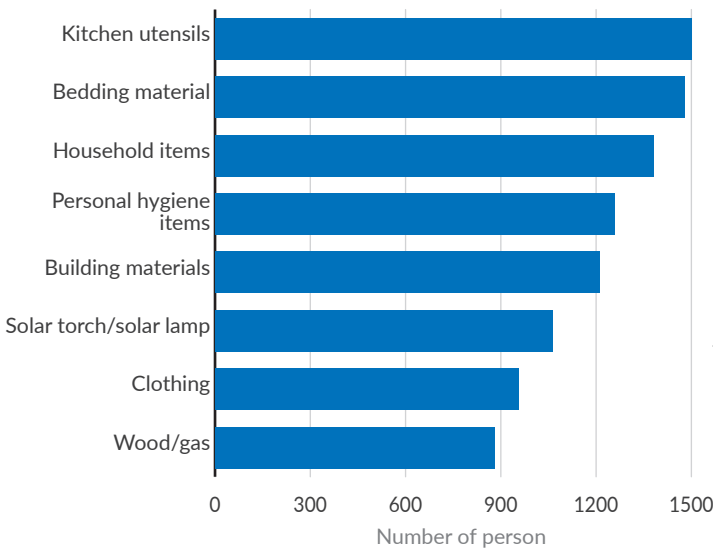
DOCUMENTATION

What type of individual document do you possess?



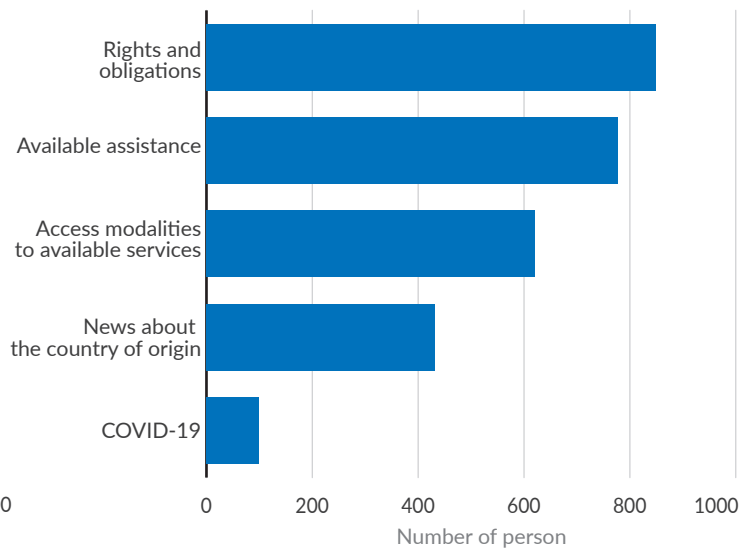
BASIC NEEDS AND ESSENTIAL SERVICES

What category of items does your family need the most?



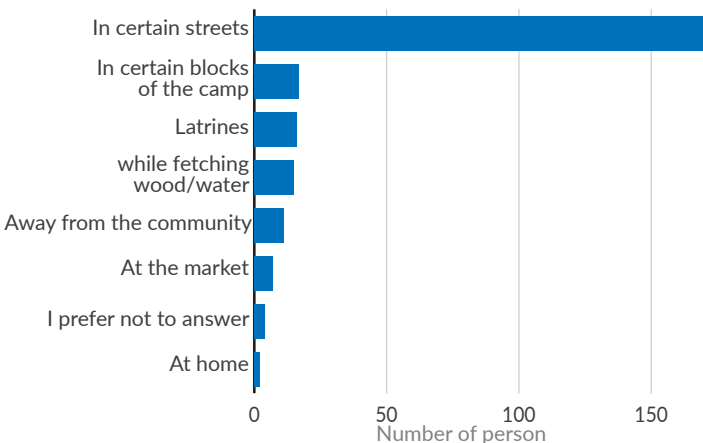
COMMUNITY ENGAGEMENT

What type of information would you like to receive from humanitarian workers and authorities?



GENDER BASED VIOLENCE

Are there specific places in the host community where you do not feel safe?



The Project 21 is a regional protection monitoring system, launched in 2020 to address gaps in data collection and analysis on protection in West and Central Africa. The inter-agency project mobilizes partners to collect a set of data using harmonized tools and a common methodology to generate joint analysis of the situation, risks, and protection trends. As of 18 May 2023, 1,540 newly arrived refugees have been interviewed in Chad for the sudanese emergency. This represents a subset of the collected data.

Sources: UNHCR, CRT 'P21'